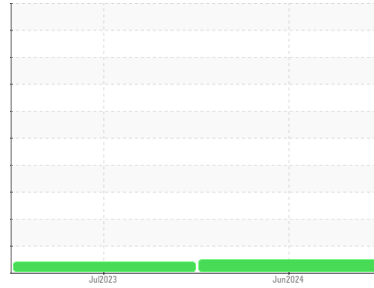




# OIL ANALYSIS REPORT

Sample Rating Trend



**NORMAL**



Area

**ASL-46 [1806]**

Machine Id

**ATLAS COPCO API864257 - WMC**

Component

**Compressor**

## DIAGNOSIS

### Recommendation

The filter change at the time of sampling has been noted. Resample at the next service interval to monitor.

### Wear

All component wear rates are normal.

### Contamination

There is no indication of any contamination in the oil.

### Fluid Condition

The condition of the oil is acceptable for the time in service.

SAMPLE INFORMATION		method	limit/base	current	history1	history2
Sample Number	Client Info			<b>UCH06208802</b>	UCH05905566	---
Sample Date	Client Info			<b>06 Jun 2024</b>	01 Jul 2023	---
Machine Age	hrs	Client Info		<b>0</b>	28597	---
Oil Age	hrs	Client Info		<b>3836</b>	0	---
Oil Changed	Client Info			<b>Not Changed</b>	Changed	---
Sample Status				<b>NORMAL</b>	ATTENTION	---

CONTAMINATION		method	limit/base	current	history1	history2
Water	WC Method		>0.1	<b>NEG</b>	NEG	---

WEAR METALS		method	limit/base	current	history1	history2
Iron	ppm	ASTM D5185m	>50	<b>0</b>	1	---
Chromium	ppm	ASTM D5185m	>5	<b>0</b>	0	---
Nickel	ppm	ASTM D5185m		<b>0</b>	0	---
Titanium	ppm	ASTM D5185m		<b>0</b>	0	---
Silver	ppm	ASTM D5185m		<b>0</b>	0	---
Aluminum	ppm	ASTM D5185m	>15	<b>0</b>	<1	---
Lead	ppm	ASTM D5185m	>65	<b>0</b>	0	---
Copper	ppm	ASTM D5185m	>65	<b>&lt;1</b>	<1	---
Tin	ppm	ASTM D5185m	>10	<b>0</b>	0	---
Vanadium	ppm	ASTM D5185m		<b>0</b>	0	---
Cadmium	ppm	ASTM D5185m		<b>0</b>	0	---

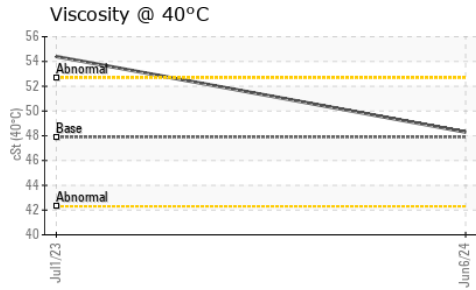
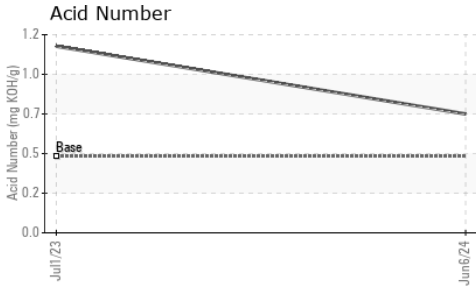
ADDITIVES		method	limit/base	current	history1	history2
Boron	ppm	ASTM D5185m	1.5	<b>0</b>	0	---
Barium	ppm	ASTM D5185m	0	<b>0</b>	3	---
Molybdenum	ppm	ASTM D5185m	0	<b>0</b>	0	---
Manganese	ppm	ASTM D5185m	0.3	<b>0</b>	<1	---
Magnesium	ppm	ASTM D5185m	0	<b>0</b>	1	---
Calcium	ppm	ASTM D5185m	0	<b>0</b>	6	---
Phosphorus	ppm	ASTM D5185m	406	<b>42</b>	18	---
Zinc	ppm	ASTM D5185m	0	<b>2</b>	28	---
Sulfur	ppm	ASTM D5185m	1283	<b>140</b>	22	---

CONTAMINANTS		method	limit/base	current	history1	history2
Silicon	ppm	ASTM D5185m	>35	<b>1</b>	2	---
Sodium	ppm	ASTM D5185m		<b>1</b>	9	---
Potassium	ppm	ASTM D5185m	>20	<b>0</b>	2	---

FLUID DEGRADATION		method	limit/base	current	history1	history2
Acid Number (AN)	mg KOH/g	ASTM D8045	0.463	<b>0.72</b>	1.13	---



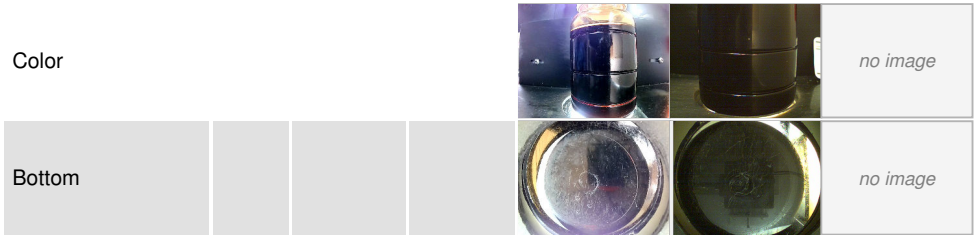
# OIL ANALYSIS REPORT



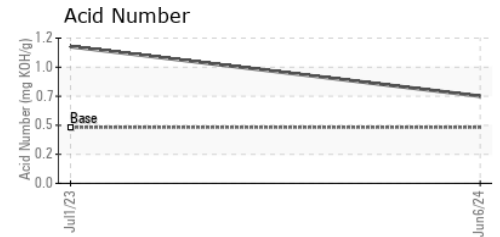
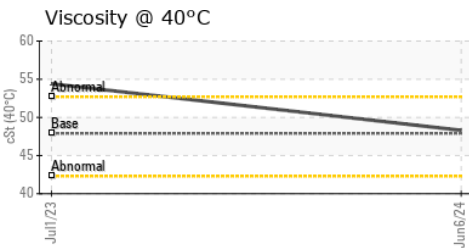
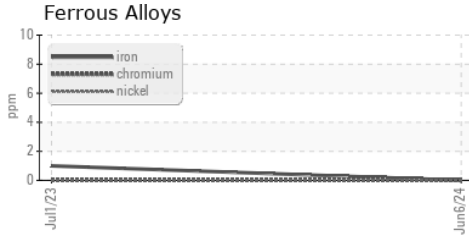
VISUAL	method	limit/base	current	history1	history2
White Metal	scalar	*Visual	NONE	NONE	---
Yellow Metal	scalar	*Visual	NONE	NONE	---
Precipitate	scalar	*Visual	NONE	NONE	---
Silt	scalar	*Visual	NONE	NONE	---
Debris	scalar	*Visual	NONE	NONE	---
Sand/Dirt	scalar	*Visual	NONE	NONE	---
Appearance	scalar	*Visual	NORML	NORML	---
Odor	scalar	*Visual	NORML	NORML	---
Emulsified Water	scalar	*Visual	>0.1	NEG	---
Free Water	scalar	*Visual		NEG	---

FLUID PROPERTIES	method	limit/base	current	history1	history2
Visc @ 40°C	cSt	ASTM D445	47.9	<b>48.3</b>	54.4

SAMPLE IMAGES	method	limit/base	current	history1	history2
---------------	--------	------------	---------	----------	----------



## GRAPHS



**Laboratory** : WearCheck USA - 501 Madison Ave., Cary, NC 27513  
**Sample No.** : UCH06208802  
**Lab Number** : 06208802  
**Unique Number** : 11076263  
**Test Package** : IND 2

**AIR SPECIALTY & EQUIPMENT COMPANY**  
 2814 EAST P ST  
 DEER PARK, TX  
 US 77536  
 Contact: Brandon Schmill  
 Bschrill@airspecialty.com

To discuss this sample report, contact Customer Service at 1-800-237-1369.

\* - Denotes test methods that are outside of the ISO 17025 scope of accreditation.

Statements of conformity to specifications are based on the simple acceptance decision rule (JCGM 106:2012)