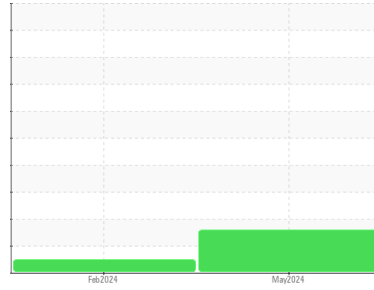




OIL ANALYSIS REPORT

Sample Rating Trend



WATER



Area

LSS-9300-5

Machine Id

QUINCY 97632H - PACTIV

Component

Compressor

DIAGNOSIS

Recommendation

We advise that you follow the water drain-off procedure for this component. Resample at the next service interval to monitor.

Wear

All component wear rates are normal.

Contamination

Moderate concentration of visible dirt/debris present in the oil. There is a light concentration of water present in the oil.

Fluid Condition

The AN level is acceptable for this fluid.

SAMPLE INFORMATION

	method	limit/base	current	history1	history2
Sample Number	Client Info		UCH06208855	UCH06101056	---
Sample Date	Client Info		14 May 2024	07 Feb 2024	---
Machine Age	hrs	Client Info	33405	31062	---
Oil Age	hrs	Client Info	10029	7686	---
Oil Changed	Client Info		N/A	N/A	---
Sample Status			ATTENTION	NORMAL	---

WEAR METALS

	method	limit/base	current	history1	history2
Iron	ppm	ASTM D5185m >50	0	0	---
Chromium	ppm	ASTM D5185m >10	0	<1	---
Nickel	ppm	ASTM D5185m	0	0	---
Titanium	ppm	ASTM D5185m	0	0	---
Silver	ppm	ASTM D5185m	0	0	---
Aluminum	ppm	ASTM D5185m >25	<1	2	---
Lead	ppm	ASTM D5185m >25	0	0	---
Copper	ppm	ASTM D5185m >50	0	0	---
Tin	ppm	ASTM D5185m >15	<1	0	---
Vanadium	ppm	ASTM D5185m	0	0	---
Cadmium	ppm	ASTM D5185m	0	0	---

ADDITIVES

	method	limit/base	current	history1	history2
Boron	ppm	ASTM D5185m	0	0	---
Barium	ppm	ASTM D5185m	0	8	---
Molybdenum	ppm	ASTM D5185m	0	0	---
Manganese	ppm	ASTM D5185m	0	0	---
Magnesium	ppm	ASTM D5185m	0	<1	---
Calcium	ppm	ASTM D5185m	0	0	---
Phosphorus	ppm	ASTM D5185m	130	119	---
Zinc	ppm	ASTM D5185m	0	0	---
Sulfur	ppm	ASTM D5185m	166	219	---

CONTAMINANTS

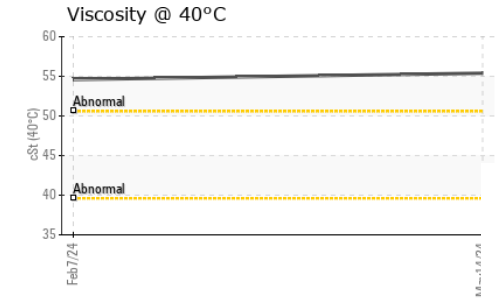
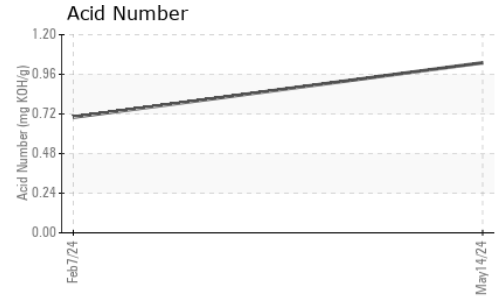
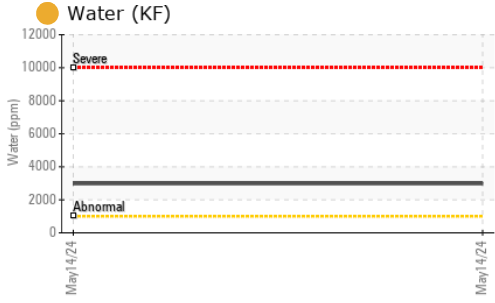
	method	limit/base	current	history1	history2
Silicon	ppm	ASTM D5185m >25	8	6	---
Sodium	ppm	ASTM D5185m	<1	0	---
Potassium	ppm	ASTM D5185m >20	0	1	---
Water	%	ASTM D6304 >0.1	0.298	---	---
ppm Water	ppm	ASTM D6304 >1000	2980	---	---

FLUID DEGRADATION

	method	limit/base	current	history1	history2
Acid Number (AN)	mg KOH/g	ASTM D8045	1.03	0.70	---



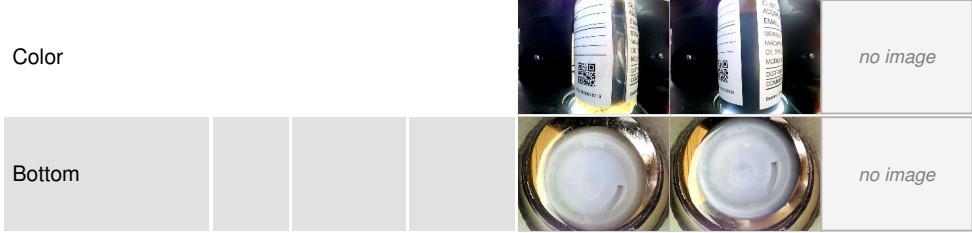
OIL ANALYSIS REPORT



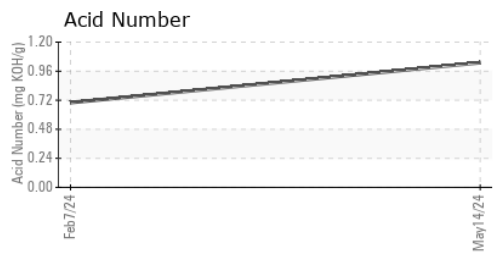
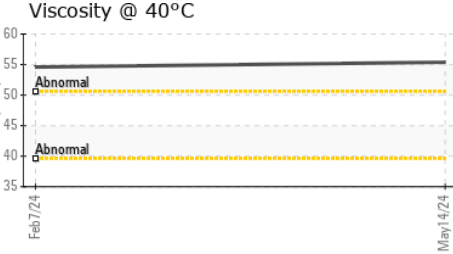
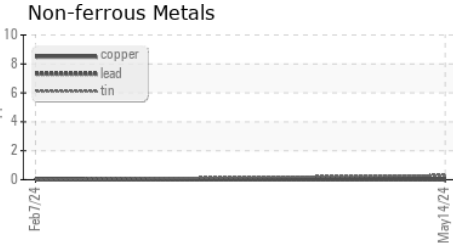
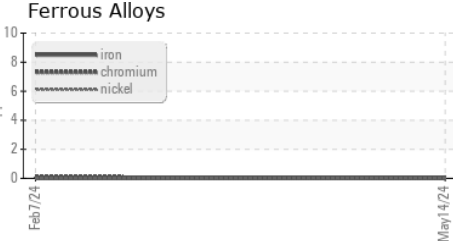
VISUAL	method	limit/base	current	history1	history2
White Metal	scalar	*Visual	NONE	NONE	---
Yellow Metal	scalar	*Visual	NONE	NONE	---
Precipitate	scalar	*Visual	NONE	NONE	---
Silt	scalar	*Visual	NONE	NONE	---
Debris	scalar	*Visual	NONE	NONE	---
Sand/Dirt	scalar	*Visual	NONE	NONE	---
Appearance	scalar	*Visual	NORML	NORML	---
Odor	scalar	*Visual	NORML	NORML	---
Emulsified Water	scalar	*Visual	>0.1	0.2%	NEG
Free Water	scalar	*Visual		NEG	NEG

FLUID PROPERTIES	method	limit/base	current	history1	history2
Visc @ 40°C	cSt	ASTM D445	55.4	54.6	---

SAMPLE IMAGES	method	limit/base	current	history1	history2
---------------	--------	------------	---------	----------	----------



GRAPHS



Certificate L2367

Laboratory : WearCheck USA - 501 Madison Ave., Cary, NC 27513
Sample No. : UCH06208855 **Received** : 13 Jun 2024
Lab Number : 06208855 **Tested** : 17 Jun 2024
Unique Number : 11076316 **Diagnosed** : 17 Jun 2024 - Don Baldrige
Test Package : IND 2 (Additional Tests: KF)

LEWIS SYSTEMS & SERVICE CO INC
 9300 STOCKPORT PL
 CHARLOTTE, NC
 US 28273
 Contact: SCOTT KEE
 skee@lewisystemsinc.com
 T: (704)588-2299
 F:

To discuss this sample report, contact Customer Service at 1-800-237-1369.

* - Denotes test methods that are outside of the ISO 17025 scope of accreditation.

Statements of conformity to specifications are based on the simple acceptance decision rule (JCGM 106:2012)