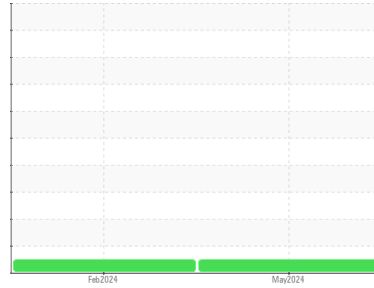




# OIL ANALYSIS REPORT

Sample Rating Trend



**NORMAL**



Area

**LSS-9300-5**

Machine Id

**003-104363 - AMERICA TRUETCHLER**

Component

**Compressor**

## DIAGNOSIS

### Recommendation

Resample at the next service interval to monitor. Please specify the brand, type, and viscosity of the oil on your next sample.

### Wear

All component wear rates are normal.

### Contamination

There is no indication of any contamination in the oil.

### Fluid Condition

The AN level is acceptable for this fluid. The condition of the oil is suitable for further service.

SAMPLE INFORMATION		method	limit/base	current	history1	history2
Sample Number	Client Info			<b>UCH06208858</b>	UCH06131468	---
Sample Date	Client Info			<b>16 May 2024</b>	28 Feb 2024	---
Machine Age	hrs	Client Info		<b>28057</b>	27691	---
Oil Age	hrs	Client Info		<b>2553</b>	2187	---
Oil Changed	Client Info			<b>N/A</b>	N/A	---
Sample Status				<b>NORMAL</b>	NORMAL	---

CONTAMINATION		method	limit/base	current	history1	history2
Water	WC Method		>0.1	<b>NEG</b>	NEG	---

WEAR METALS		method	limit/base	current	history1	history2
Iron	ppm	ASTM D5185m	>50	<b>0</b>	<1	---
Chromium	ppm	ASTM D5185m	>10	<b>0</b>	<1	---
Nickel	ppm	ASTM D5185m		<b>0</b>	<1	---
Titanium	ppm	ASTM D5185m		<b>0</b>	<1	---
Silver	ppm	ASTM D5185m		<b>0</b>	<1	---
Aluminum	ppm	ASTM D5185m	>25	<b>0</b>	2	---
Lead	ppm	ASTM D5185m	>25	<b>0</b>	<1	---
Copper	ppm	ASTM D5185m	>50	<b>0</b>	<1	---
Tin	ppm	ASTM D5185m	>15	<b>&lt;1</b>	<1	---
Vanadium	ppm	ASTM D5185m		<b>0</b>	<1	---
Cadmium	ppm	ASTM D5185m		<b>0</b>	<1	---

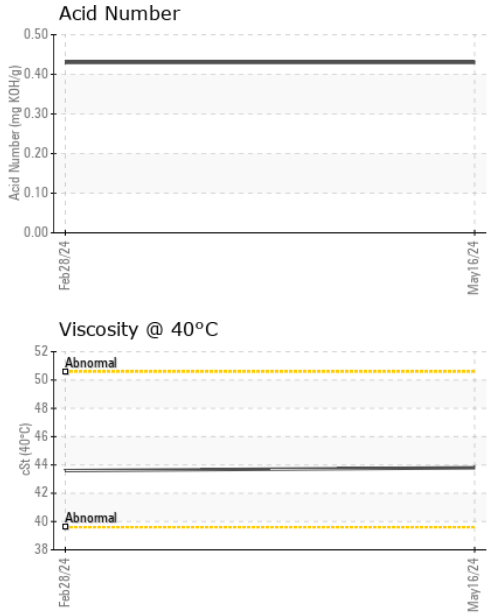
ADDITIVES		method	limit/base	current	history1	history2
Boron	ppm	ASTM D5185m		<b>0</b>	0	---
Barium	ppm	ASTM D5185m		<b>0</b>	0	---
Molybdenum	ppm	ASTM D5185m		<b>0</b>	<1	---
Manganese	ppm	ASTM D5185m		<b>0</b>	<1	---
Magnesium	ppm	ASTM D5185m		<b>0</b>	<1	---
Calcium	ppm	ASTM D5185m		<b>0</b>	3	---
Phosphorus	ppm	ASTM D5185m		<b>262</b>	302	---
Zinc	ppm	ASTM D5185m		<b>14</b>	34	---
Sulfur	ppm	ASTM D5185m		<b>717</b>	796	---

CONTAMINANTS		method	limit/base	current	history1	history2
Silicon	ppm	ASTM D5185m	>25	<b>0</b>	<1	---
Sodium	ppm	ASTM D5185m		<b>&lt;1</b>	0	---
Potassium	ppm	ASTM D5185m	>20	<b>0</b>	1	---

FLUID DEGRADATION		method	limit/base	current	history1	history2
Acid Number (AN)	mg KOH/g	ASTM D8045		<b>0.43</b>	0.43	---



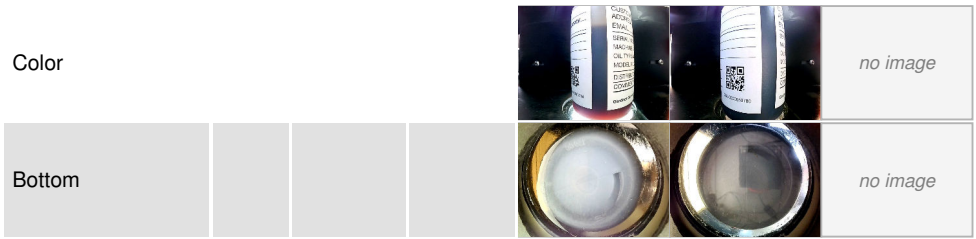
# OIL ANALYSIS REPORT



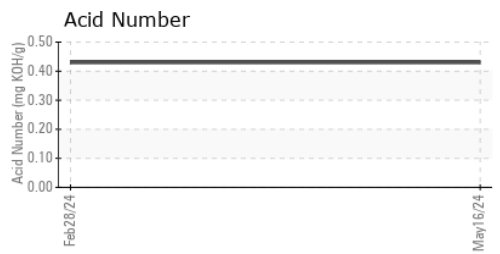
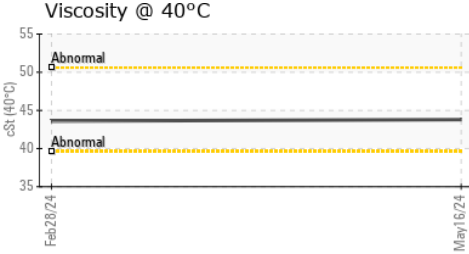
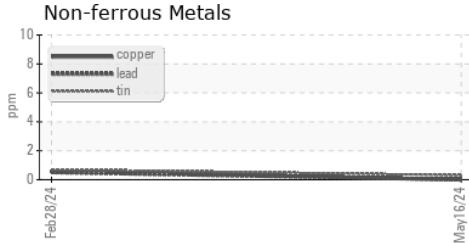
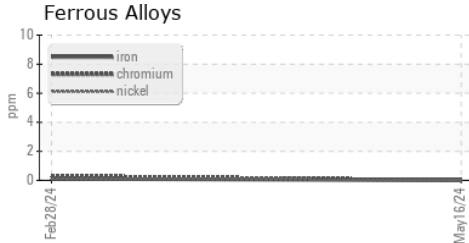
VISUAL	method	limit/base	current	history1	history2
White Metal	scalar	*Visual	NONE	NONE	---
Yellow Metal	scalar	*Visual	NONE	NONE	---
Precipitate	scalar	*Visual	NONE	NONE	---
Silt	scalar	*Visual	NONE	NONE	---
Debris	scalar	*Visual	NONE	NONE	---
Sand/Dirt	scalar	*Visual	NONE	NONE	---
Appearance	scalar	*Visual	NORML	NORML	---
Odor	scalar	*Visual	NORML	NORML	---
Emulsified Water	scalar	*Visual	>0.1	NEG	---
Free Water	scalar	*Visual		NEG	---

FLUID PROPERTIES	method	limit/base	current	history1	history2
Visc @ 40°C	cSt	ASTM D445	<b>43.8</b>	43.6	---

SAMPLE IMAGES	method	limit/base	current	history1	history2
---------------	--------	------------	---------	----------	----------



## GRAPHS



**Laboratory** : WearCheck USA - 501 Madison Ave., Cary, NC 27513  
**Sample No.** : UCH06208858      **Received** : 13 Jun 2024  
**Lab Number** : **06208858**      **Tested** : 14 Jun 2024  
**Unique Number** : 11076319      **Diagnosed** : 14 Jun 2024 - Wes Davis  
**Test Package** : IND 2

**LEWIS SYSTEMS & SERVICE CO INC**  
 9300 STOCKPORT PL  
 CHARLOTTE, NC  
 US 28273  
 Contact: SCOTT KEE  
 skee@lewisystemsinc.com

To discuss this sample report, contact Customer Service at 1-800-237-1369.

\* - Denotes test methods that are outside of the ISO 17025 scope of accreditation.

Statements of conformity to specifications are based on the simple acceptance decision rule (JCGM 106:2012)

T: (704)588-2299  
F: