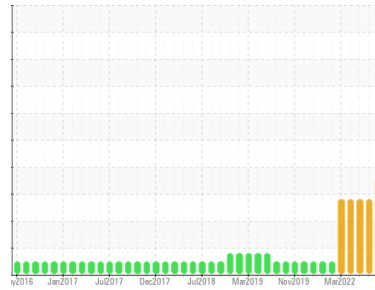




OIL ANALYSIS REPORT

Sample Rating Trend



WATER



Area

COMPLUBE PLUS 10

Machine Id

GARDNER DENVER CP-11 - NACCO / HYSTER-YALE (S/N PL70A090714)

Component

Compressor

DIAGNOSIS

Recommendation

Oil and filter change at the time of sampling has been noted. No corrective action is recommended at this time. Resample at the next service interval to monitor.

Wear

All component wear rates are normal.

Contamination

There is a light concentration of water present in the oil.

Fluid Condition

The oil viscosity is higher than normal. Additive levels indicate the addition of a different brand, or type of oil. Confirm oil type.

SAMPLE INFORMATION

	method	limit/base	current	history1	history2
Sample Number	Client Info		UCH06209285	UCH05801717	UCH05612139
Sample Date	Client Info		25 May 2024	22 Feb 2023	08 Aug 2022
Machine Age	hrs	Client Info	0	0	0
Oil Age	hrs	Client Info	0	0	0
Oil Changed	Client Info		Changed	Not Chngd	N/A
Sample Status			ATTENTION	ATTENTION	ATTENTION

WEAR METALS

	method	limit/base	current	history1	history2
Iron	ppm	ASTM D5185m >50	12	11	10
Chromium	ppm	ASTM D5185m >10	<1	<1	0
Nickel	ppm	ASTM D5185m	0	0	0
Titanium	ppm	ASTM D5185m	<1	<1	<1
Silver	ppm	ASTM D5185m	0	7	3
Aluminum	ppm	ASTM D5185m >25	2	2	2
Lead	ppm	ASTM D5185m >25	<1	<1	<1
Copper	ppm	ASTM D5185m >50	2	3	2
Tin	ppm	ASTM D5185m >15	7	9	8
Vanadium	ppm	ASTM D5185m	0	0	0
Cadmium	ppm	ASTM D5185m	0	<1	<1

ADDITIVES

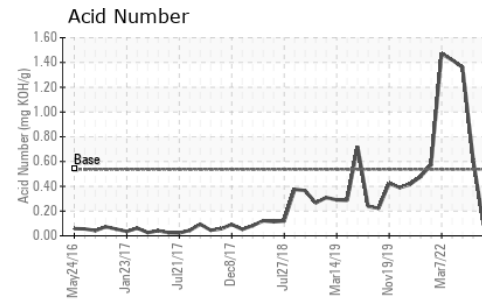
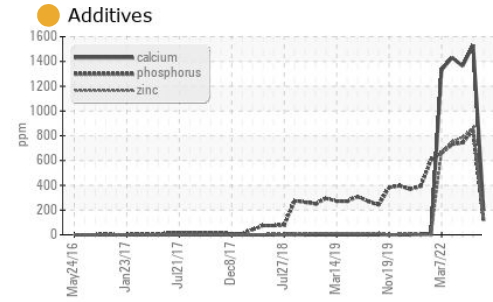
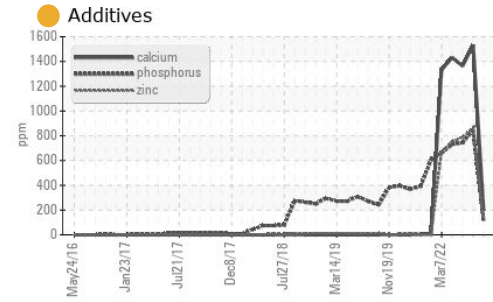
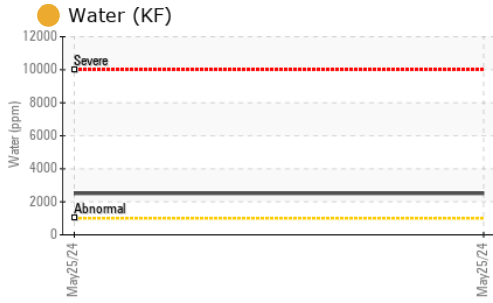
	method	limit/base	current	history1	history2
Boron	ppm	ASTM D5185m 0.1	12	117	129
Barium	ppm	ASTM D5185m 0.8	0	0	0
Molybdenum	ppm	ASTM D5185m 0	8	51	50
Manganese	ppm	ASTM D5185m 0.9	<1	1	1
Magnesium	ppm	ASTM D5185m 0	39	254	227
Calcium	ppm	ASTM D5185m 0	199	1533	1363
Phosphorus	ppm	ASTM D5185m 409	119	845	744
Zinc	ppm	ASTM D5185m 0	124	864	789
Sulfur	ppm	ASTM D5185m 1290	325	2675	2643

CONTAMINANTS

	method	limit/base	current	history1	history2
Silicon	ppm	ASTM D5185m >25	6	4	3
Sodium	ppm	ASTM D5185m	0	1	0
Potassium	ppm	ASTM D5185m >20	1	2	2
Water	%	ASTM D6304 >0.1	0.251	---	---
ppm Water	ppm	ASTM D6304 >1000	2510	---	---

FLUID DEGRADATION

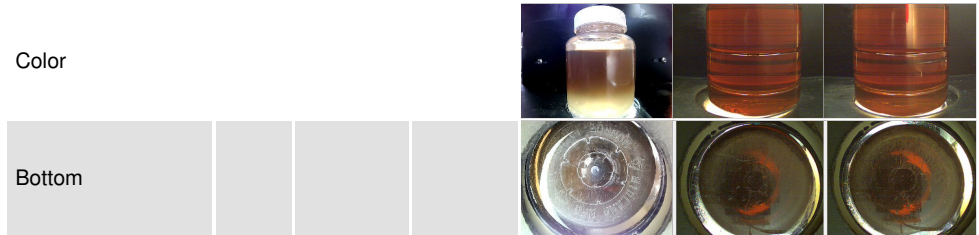
	method	limit/base	current	history1	history2
Acid Number (AN)	mg KOH/g	ASTM D8045 0.537	0.09	0.62	1.36



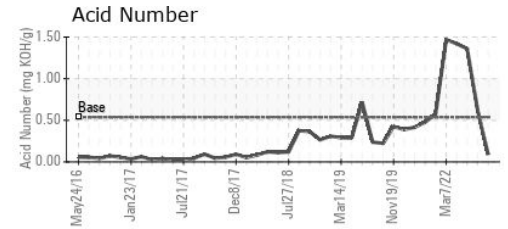
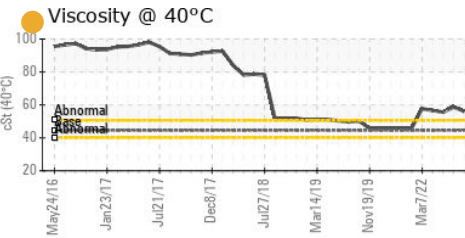
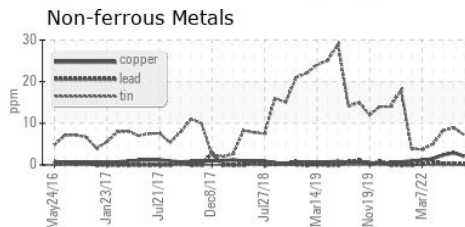
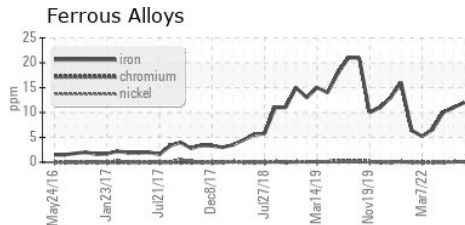
VISUAL	method	limit/base	current	history1	history2
White Metal	scalar	*Visual	NONE	NONE	NONE
Yellow Metal	scalar	*Visual	NONE	NONE	NONE
Precipitate	scalar	*Visual	NONE	NONE	NONE
Silt	scalar	*Visual	NONE	NONE	NONE
Debris	scalar	*Visual	NONE	NONE	NONE
Sand/Dirt	scalar	*Visual	NONE	NONE	NONE
Appearance	scalar	*Visual	NORML	NORML	NORML
Odor	scalar	*Visual	NORML	NORML	NORML
Emulsified Water	scalar	*Visual	>0.1	0.2%	NEG
Free Water	scalar	*Visual		NEG	NEG

FLUID PROPERTIES	method	limit/base	current	history1	history2
Visc @ 40°C	cSt	ASTM D445	44.56	56.1	58.7

SAMPLE IMAGES	method	limit/base	current	history1	history2
---------------	--------	------------	---------	----------	----------



GRAPHS



Certificate L2367

Laboratory : WearCheck USA - 501 Madison Ave., Cary, NC 27513
Sample No. : UCH06209285
Lab Number : 06209285
Unique Number : 11076746
Test Package : IND 2 (Additional Tests: KF)

AIR SERVICE AND PARTS INC.
 2211 BUECHEL AVE
 LOUISVILLE, KY
 US 40218

To discuss this sample report, contact Customer Service at 1-800-237-1369.

Contact: DWIGHT LOGSDON
 dwight@airserviceandparts.com; canastasio@wearcheckusa.com

* - Denotes test methods that are outside of the ISO 17025 scope of accreditation.

T: (502)239-1541

Statements of conformity to specifications are based on the simple acceptance decision rule (JCGM 106:2012)

F: (502)239-7678