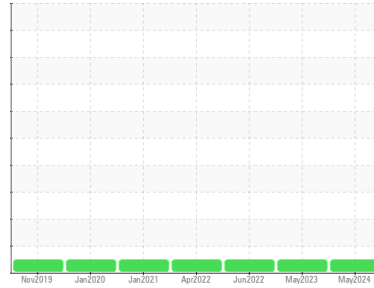




# OIL ANALYSIS REPORT

## Sample Rating Trend



**NORMAL**



Area  
**CHEMLUBE 730 [1678898]**  
 Machine Id  
**L5-CAL-UEROL - PFNONWOVENS**  
 Component  
**Gearbox**

### DIAGNOSIS

#### Recommendation

Little or no information is provided as to the component and lubricant being tested. Recommendations are therefore generic in nature and may not apply to the current application. Please forward information as to equipment type, reservoir capacity, lubricant type and any pertinent information to allow for a more accurate assessment. Resample at the next service interval to monitor. NOTE: Please provide information regarding reservoir capacity, filter type and micron rating with next sample. Please specify the brand, type, and viscosity of the oil on your next sample.

#### Wear

All component wear rates are normal.

#### Contamination

There is no indication of any contamination in the oil.

#### Fluid Condition

The AN level is acceptable for this fluid. The condition of the oil is suitable for further service.

### SAMPLE INFORMATION

	method	limit/base	current	history1	history2
Sample Number	Client Info		<b>UCH06209305</b>	UCH05890340	UCH05571121
Sample Date	Client Info		<b>23 May 2024</b>	08 May 2023	03 Jun 2022
Machine Age	hrs	Client Info	<b>0</b>	0	0
Oil Age	hrs	Client Info	<b>0</b>	0	0
Oil Changed	Client Info		<b>N/A</b>	N/A	N/A
Sample Status			<b>NORMAL</b>	NORMAL	NORMAL

### CONTAMINATION

	method	limit/base	current	history1	history2
Water	WC Method	>0.2	<b>NEG</b>	NEG	NEG

### WEAR METALS

	method	limit/base	current	history1	history2
Iron	ppm	ASTM D5185m >200	<b>20</b>	7	15
Chromium	ppm	ASTM D5185m >15	<b>&lt;1</b>	0	0
Nickel	ppm	ASTM D5185m >15	<b>0</b>	<1	0
Titanium	ppm	ASTM D5185m	<b>&lt;1</b>	0	0
Silver	ppm	ASTM D5185m	<b>0</b>	0	0
Aluminum	ppm	ASTM D5185m >25	<b>2</b>	0	<1
Lead	ppm	ASTM D5185m >100	<b>0</b>	0	0
Copper	ppm	ASTM D5185m >200	<b>&lt;1</b>	<1	0
Tin	ppm	ASTM D5185m >25	<b>&lt;1</b>	0	0
Vanadium	ppm	ASTM D5185m	<b>0</b>	0	0
Cadmium	ppm	ASTM D5185m	<b>0</b>	0	0

### ADDITIVES

	method	limit/base	current	history1	history2
Boron	ppm	ASTM D5185m	<b>49</b>	29	28
Barium	ppm	ASTM D5185m	<b>0</b>	0	<1
Molybdenum	ppm	ASTM D5185m	<b>&lt;1</b>	0	0
Manganese	ppm	ASTM D5185m	<b>0</b>	0	<1
Magnesium	ppm	ASTM D5185m	<b>3</b>	0	1
Calcium	ppm	ASTM D5185m	<b>327</b>	105	274
Phosphorus	ppm	ASTM D5185m	<b>427</b>	422	437
Zinc	ppm	ASTM D5185m	<b>9</b>	7	12
Sulfur	ppm	ASTM D5185m	<b>5817</b>	5517	6259

### CONTAMINANTS

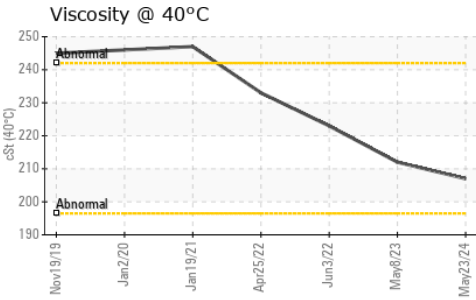
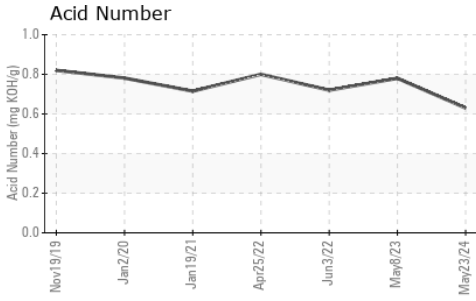
	method	limit/base	current	history1	history2
Silicon	ppm	ASTM D5185m >50	<b>2</b>	2	1
Sodium	ppm	ASTM D5185m	<b>0</b>	0	5
Potassium	ppm	ASTM D5185m >20	<b>1</b>	1	0

### FLUID DEGRADATION

	method	limit/base	current	history1	history2
Acid Number (AN)	mg KOH/g	ASTM D8045	<b>0.63</b>	0.78	0.72



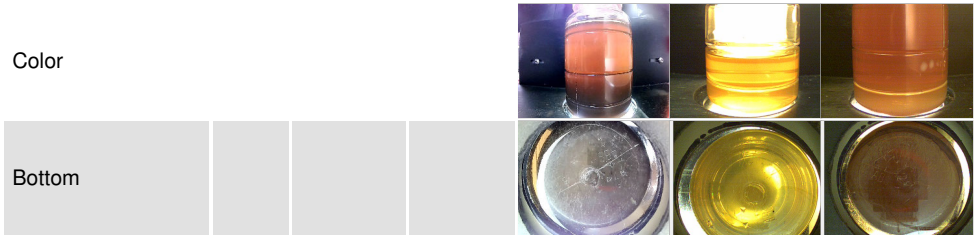
# OIL ANALYSIS REPORT



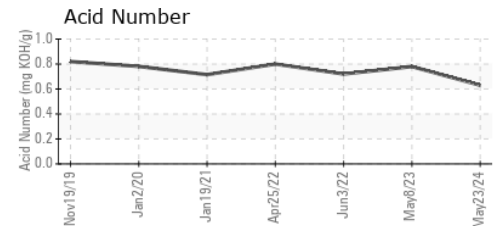
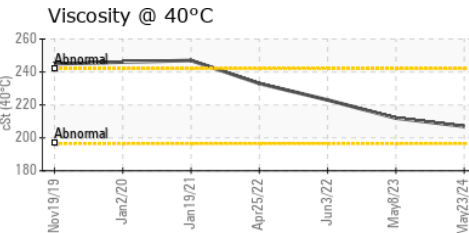
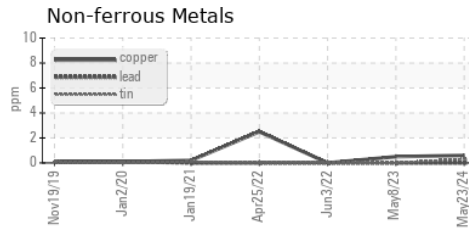
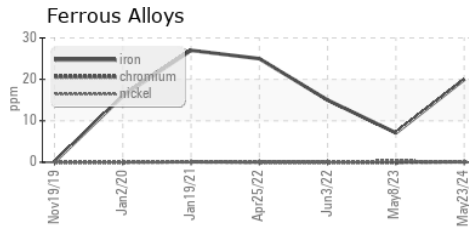
VISUAL	method	limit/base	current	history1	history2
White Metal	scalar	*Visual	NONE	NONE	NONE
Yellow Metal	scalar	*Visual	NONE	NONE	NONE
Precipitate	scalar	*Visual	NONE	NONE	NONE
Silt	scalar	*Visual	NONE	NONE	NONE
Debris	scalar	*Visual	NONE	NONE	NONE
Sand/Dirt	scalar	*Visual	NONE	NONE	NONE
Appearance	scalar	*Visual	NORML	NORML	NORML
Odor	scalar	*Visual	NORML	NORML	NORML
Emulsified Water	scalar	*Visual	>0.2	NEG	NEG
Free Water	scalar	*Visual		NEG	NEG

FLUID PROPERTIES	method	limit/base	current	history1	history2
Visc @ 40°C	cSt	ASTM D445	<b>207</b>	212	223

SAMPLE IMAGES	method	limit/base	current	history1	history2
---------------	--------	------------	---------	----------	----------



## GRAPHS



Certificate L2367

**Laboratory** : WearCheck USA - 501 Madison Ave., Cary, NC 27513  
**Sample No.** : UCH06209305      **Received** : 13 Jun 2024  
**Lab Number** : 06209305      **Tested** : 15 Jun 2024  
**Unique Number** : 11076766      **Diagnosed** : 15 Jun 2024 - Wes Davis  
**Test Package** : IND 2

**CORROSION PRODUCTS & EQUIPMENT**  
 940 POINTVIEW AVE  
 EPHRATA, PA  
 US 17522  
 Contact: RYAN HUNGARTER  
 rhungarter@corrosion-products.com  
 T: (717)961-1998  
 F:

To discuss this sample report, contact Customer Service at 1-800-237-1369.

\* - Denotes test methods that are outside of the ISO 17025 scope of accreditation.

Statements of conformity to specifications are based on the simple acceptance decision rule (JCGM 106:2012)