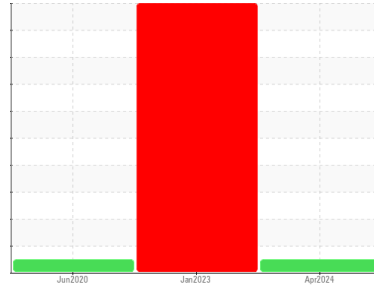




OIL ANALYSIS REPORT

Sample Rating Trend



NORMAL



Area
CHEMLUBE 630 [1673630]
 Machine Id
L2-TRFR-VACP2 - PFNONWOVENS
 Component
Pump

DIAGNOSIS

Recommendation

Resample at the next service interval to monitor.

Wear

All component wear rates are normal.

Contamination

The amount and size of particulates present in the system are acceptable.

Fluid Condition

The AN level is acceptable for this fluid. The condition of the oil is suitable for further service.

SAMPLE INFORMATION

| | method | limit/base | current | history1 | history2 |
|---------------|-------------|-------------|--------------------|-------------|-------------|
| Sample Number | Client Info | | UCH06209318 | UCH05774504 | UCH05010066 |
| Sample Date | Client Info | | 17 Apr 2024 | 01 Jan 2023 | 17 Jun 2020 |
| Machine Age | hrs | Client Info | 0 | 0 | 0 |
| Oil Age | hrs | Client Info | 0 | 0 | 0 |
| Oil Changed | Client Info | | N/A | N/A | N/A |
| Sample Status | | | NORMAL | SEVERE | NORMAL |

CONTAMINATION

| | method | limit/base | current | history1 | history2 |
|-------|-----------|------------|------------|----------|----------|
| Water | WC Method | >.1 | NEG | NEG | NEG |

WEAR METALS

| | method | limit/base | current | history1 | history2 |
|----------|--------|-----------------|--------------|----------|----------|
| Iron | ppm | ASTM D5185m >90 | 1 | ▲ 420 | 1 |
| Chromium | ppm | ASTM D5185m >5 | <1 | 3 | <1 |
| Nickel | ppm | ASTM D5185m >5 | 0 | <1 | 0 |
| Titanium | ppm | ASTM D5185m >3 | <1 | 0 | 0 |
| Silver | ppm | ASTM D5185m >3 | 0 | 0 | 0 |
| Aluminum | ppm | ASTM D5185m >7 | 2 | ▲ 26 | 2 |
| Lead | ppm | ASTM D5185m >12 | <1 | 0 | 0 |
| Copper | ppm | ASTM D5185m >30 | 0 | 2 | <1 |
| Tin | ppm | ASTM D5185m >9 | <1 | 0 | 0 |
| Antimony | ppm | ASTM D5185m | --- | --- | 0 |
| Vanadium | ppm | ASTM D5185m | 0 | 0 | 0 |
| Cadmium | ppm | ASTM D5185m | 0 | <1 | 0 |

ADDITIVES

| | method | limit/base | current | history1 | history2 |
|------------|--------|------------------|-------------|----------|----------|
| Boron | ppm | ASTM D5185m 4.1 | 0 | 0 | <1 |
| Barium | ppm | ASTM D5185m 0.1 | 0 | 0 | 0 |
| Molybdenum | ppm | ASTM D5185m 0 | 0 | 0 | 0 |
| Manganese | ppm | ASTM D5185m 0.7 | 0 | 5 | 0 |
| Magnesium | ppm | ASTM D5185m 0 | 0 | 8 | <1 |
| Calcium | ppm | ASTM D5185m 0 | 0 | 2 | 0 |
| Phosphorus | ppm | ASTM D5185m 1600 | 1429 | 1175 | 1626 |
| Zinc | ppm | ASTM D5185m 0 | 0 | 19 | <1 |
| Sulfur | ppm | ASTM D5185m 354 | 1624 | 1006 | 484 |

CONTAMINANTS

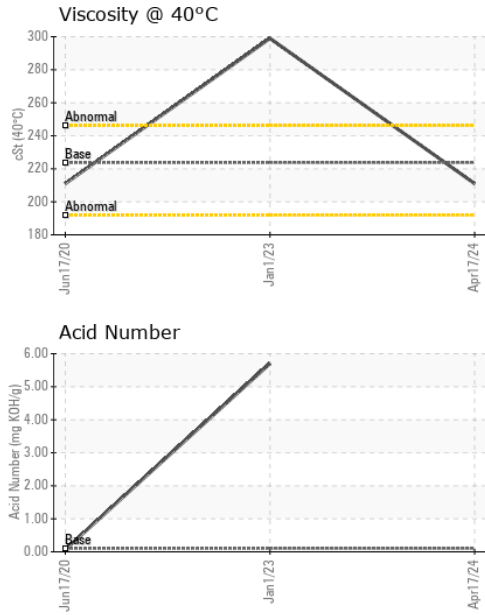
| | method | limit/base | current | history1 | history2 |
|-----------|--------|-----------------|--------------|----------|----------|
| Silicon | ppm | ASTM D5185m >60 | <1 | 7 | 2 |
| Sodium | ppm | ASTM D5185m | 0 | 2 | 0 |
| Potassium | ppm | ASTM D5185m >20 | <1 | <1 | <1 |

FLUID DEGRADATION

| | method | limit/base | current | history1 | history2 |
|------------------|----------|------------------|------------|----------|----------|
| Acid Number (AN) | mg KOH/g | ASTM D8045 0.102 | --- | ▲ 5.70 | 0.068 |



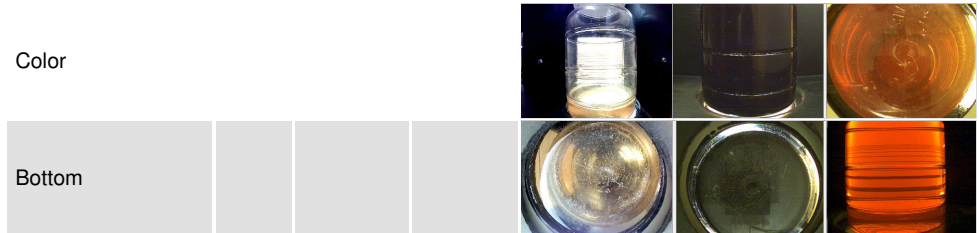
OIL ANALYSIS REPORT



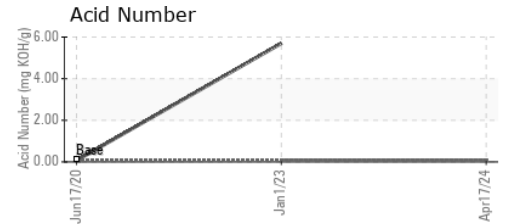
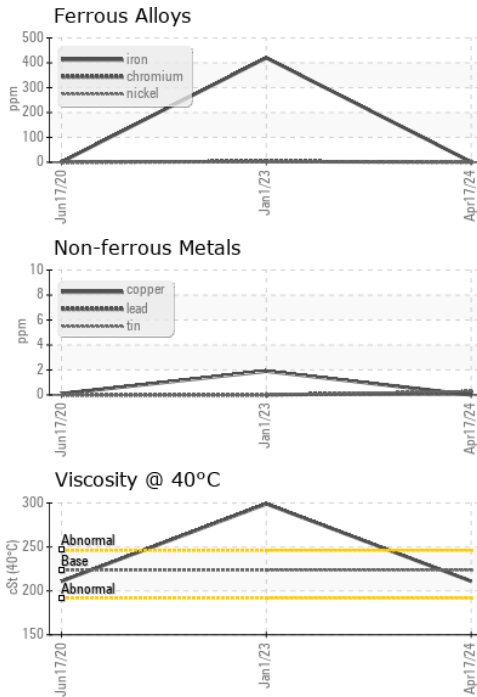
| VISUAL | method | limit/base | current | history1 | history2 |
|------------------|--------|------------|---------|---------------------|----------|
| White Metal | scalar | *Visual | NONE | NONE ▲ MODER | NONE |
| Yellow Metal | scalar | *Visual | NONE | NONE | NONE |
| Precipitate | scalar | *Visual | NONE | NONE | NONE |
| Silt | scalar | *Visual | NONE | NONE | NONE |
| Debris | scalar | *Visual | NONE | NONE | NONE |
| Sand/Dirt | scalar | *Visual | NONE | NONE | NONE |
| Appearance | scalar | *Visual | NORML | NORML | NORML |
| Odor | scalar | *Visual | NORML | NORML | NORML |
| Emulsified Water | scalar | *Visual | >.1 | NEG | NEG |
| Free Water | scalar | *Visual | | NEG | NEG |

| FLUID PROPERTIES | method | limit/base | current | history1 | history2 |
|------------------|--------|------------|---------|------------|----------|
| Visc @ 40°C | cSt | ASTM D445 | 223.7 | 211 | 299 |

| SAMPLE IMAGES | method | limit/base | current | history1 | history2 |
|---------------|--------|------------|---------|----------|----------|
|---------------|--------|------------|---------|----------|----------|



GRAPHS



Laboratory : WearCheck USA - 501 Madison Ave., Cary, NC 27513
Sample No. : UCH06209318 **Received** : 13 Jun 2024
Lab Number : **06209318** **Tested** : 17 Jun 2024
Unique Number : 11076779 **Diagnosed** : 17 Jun 2024 - Angela Borella
Test Package : IND 2

CORROSION PRODUCTS & EQUIPMENT
 940 POINTVIEW AVE
 EPHRATA, PA
 US 17522
 Contact: RYAN HUNGARTER
 rhungarter@corrosion-products.com
 T: (717)961-1998
 F:

To discuss this sample report, contact Customer Service at 1-800-237-1369.
 * - Denotes test methods that are outside of the ISO 17025 scope of accreditation.
 Statements of conformity to specifications are based on the simple acceptance decision rule (JCGM 106:2012)