



OIL ANALYSIS REPORT

Sample Rating Trend



ISO



Machine Id

00301-L02

Component

Hydraulic System

Fluid

MINERAL OIL ISO VG 46 (1000 LTR)

DIAGNOSIS

Recommendation

We recommend you service the filters on this component. Resample at the next service interval to monitor.

Wear

All component wear rates are normal.

Contamination

There is a high amount of particulates present in the oil.

Fluid Condition

The AN level is acceptable for this fluid. The condition of the oil is acceptable for the time in service.

SAMPLE INFORMATION		method	limit/base	current	history1	history2
Sample Number	Client Info			PH0001604	---	---
Sample Date	Client Info			25 Mar 2024	---	---
Machine Age	hrs	Client Info		0	---	---
Oil Age	hrs	Client Info		0	---	---
Oil Changed	Client Info			N/A	---	---
Sample Status				ABNORMAL	---	---

CONTAMINATION		method	limit/base	current	history1	history2
Water	WC Method		>0.05	NEG	---	---

WEAR METALS		method	limit/base	current	history1	history2
Iron	ppm	ASTM D5185m	>20	2	---	---
Chromium	ppm	ASTM D5185m	>20	<1	---	---
Nickel	ppm	ASTM D5185m	>20	0	---	---
Titanium	ppm	ASTM D5185m		<1	---	---
Silver	ppm	ASTM D5185m		0	---	---
Aluminum	ppm	ASTM D5185m	>20	2	---	---
Lead	ppm	ASTM D5185m	>20	0	---	---
Copper	ppm	ASTM D5185m	>20	<1	---	---
Tin	ppm	ASTM D5185m	>20	0	---	---
Vanadium	ppm	ASTM D5185m		0	---	---
Cadmium	ppm	ASTM D5185m		0	---	---

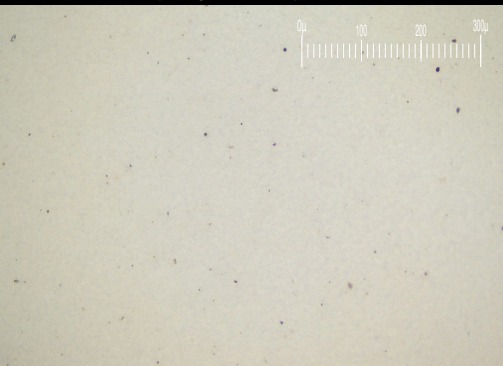
ADDITIVES		method	limit/base	current	history1	history2
Boron	ppm	ASTM D5185m		0	---	---
Barium	ppm	ASTM D5185m		<1	---	---
Molybdenum	ppm	ASTM D5185m		0	---	---
Manganese	ppm	ASTM D5185m		0	---	---
Magnesium	ppm	ASTM D5185m		12	---	---
Calcium	ppm	ASTM D5185m		25	---	---
Phosphorus	ppm	ASTM D5185m		343	---	---
Zinc	ppm	ASTM D5185m		413	---	---
Sulfur	ppm	ASTM D5185m		2311	---	---

CONTAMINANTS		method	limit/base	current	history1	history2
Silicon	ppm	ASTM D5185m	>15	2	---	---
Sodium	ppm	ASTM D5185m		0	---	---
Potassium	ppm	ASTM D5185m	>20	<1	---	---

FLUID CLEANLINESS		method	limit/base	current	history1	history2
Particles >4µm	ASTM D7647	>1300	▲ 12429	---	---	
Particles >6µm	ASTM D7647	>160	▲ 3377	---	---	
Particles >14µm	ASTM D7647	>40	▲ 253	---	---	
Particles >21µm	ASTM D7647	>10	▲ 52	---	---	
Particles >38µm	ASTM D7647	>3	1	---	---	
Particles >71µm	ASTM D7647	>3	0	---	---	
Oil Cleanliness	ISO 4406 (c)	>17/14/12	▲ 21/19/15	---	---	

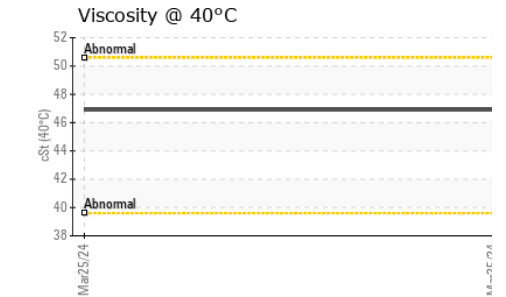
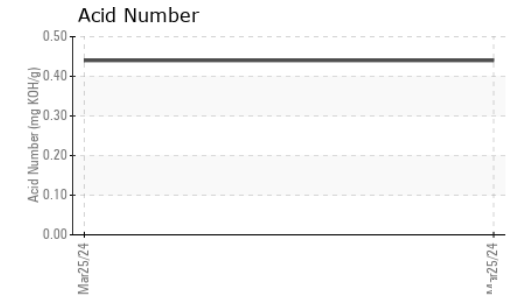
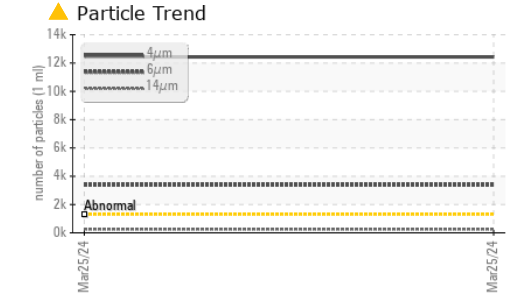
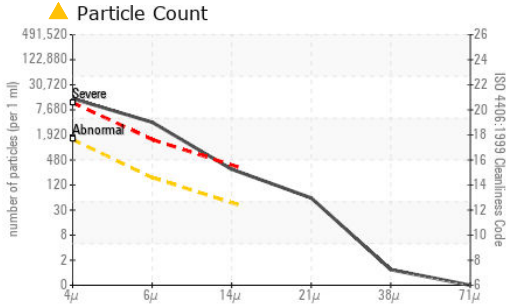
FLUID DEGRADATION		method	limit/base	current	history1	history2
Acid Number (AN)	mg KOH/g	ASTM D8045		0.44	---	---

Particle Filter (Magn: 200 x)





OIL ANALYSIS REPORT



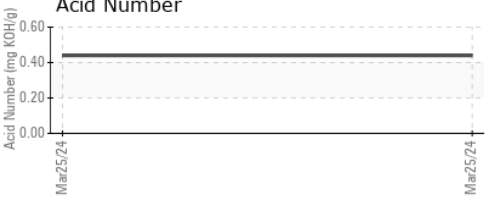
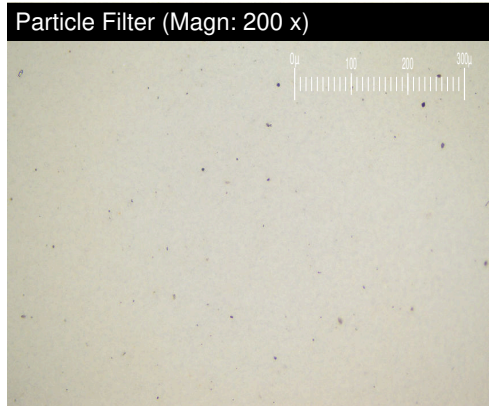
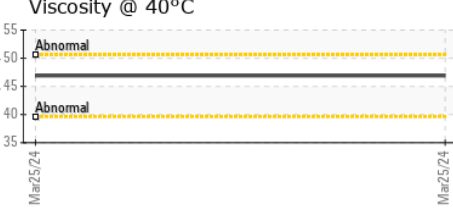
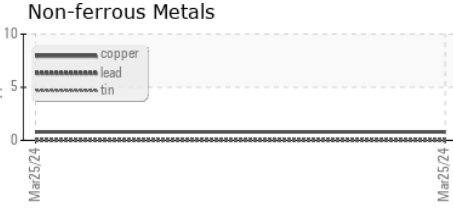
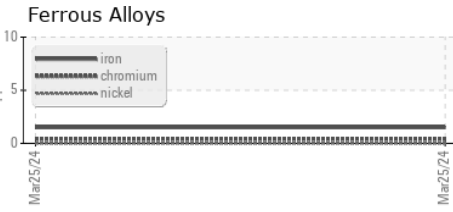
VISUAL	method	limit/base	current	history1	history2	
White Metal	scalar	*Visual	NONE	NONE	---	---
Yellow Metal	scalar	*Visual	NONE	NONE	---	---
Precipitate	scalar	*Visual	NONE	NONE	---	---
Silt	scalar	*Visual	NONE	NONE	---	---
Debris	scalar	*Visual	NONE	NONE	---	---
Sand/Dirt	scalar	*Visual	NONE	NONE	---	---
Appearance	scalar	*Visual	NORML	NORML	---	---
Odor	scalar	*Visual	NORML	NORML	---	---
Emulsified Water	scalar	*Visual	>0.05	NEG	---	---
Free Water	scalar	*Visual		NEG	---	---

FLUID PROPERTIES	method	limit/base	current	history1	history2
Visc @ 40°C	cSt	ASTM D445	46.9	---	---

SAMPLE IMAGES	method	limit/base	current	history1	history2
---------------	--------	------------	---------	----------	----------

Color		no image	no image
Bottom		no image	no image
PrtFilter		no image	no image

GRAPHS



Laboratory : WearCheck USA - 501 Madison Ave., Cary, NC 27513
Sample No. : PH0001604 **Received** : 14 Jun 2024
Lab Number : 06210747 **Tested** : 19 Jun 2024
Unique Number : 11083611 **Diagnosed** : 19 Jun 2024 - Angela Borella
Test Package : PLANT (Additional Tests: PrtFilter)

IMPORTADORA RB INDUSTRIAL
 CHAPULTEPEC E COLEGIO LUZ OBRERA
 PUEBLA, ZZ
 MX 72110
 Contact: Service Manager
 cotizaciones@rbindustrial.mx

To discuss this sample report, contact Customer Service at 1-800-237-1369.

* - Denotes test methods that are outside of the ISO 17025 scope of accreditation.

Statements of conformity to specifications are based on the simple acceptance decision rule (JCGM 106:2012)

T:
F: