



# OIL ANALYSIS REPORT

Sample Rating Trend



ISO

Machine Id

**00011**

Component

**Hydraulic System**

Fluid

**MINERAL OIL ISO VG 46 (800 LTR)**

## DIAGNOSIS

### Recommendation

We recommend you service the filters on this component. Resample at the next service interval to monitor.

### Wear

All component wear rates are normal.

### Contamination

There is a high amount of silt (particulates < 14 microns in size) present in the oil.

### Fluid Condition

The AN level is acceptable for this fluid. The condition of the oil is acceptable for the time in service.

SAMPLE INFORMATION		method	limit/base	current	history1	history2
Sample Number	Client Info			<b>PH0001595</b>	---	---
Sample Date	Client Info			<b>25 Mar 2024</b>	---	---
Machine Age	hrs	Client Info		<b>0</b>	---	---
Oil Age	hrs	Client Info		<b>0</b>	---	---
Oil Changed	Client Info			<b>N/A</b>	---	---
Sample Status				<b>ABNORMAL</b>	---	---

CONTAMINATION		method	limit/base	current	history1	history2
Water	WC Method		>0.05	<b>NEG</b>	---	---

WEAR METALS		method	limit/base	current	history1	history2
Iron	ppm	ASTM D5185m	>20	<b>2</b>	---	---
Chromium	ppm	ASTM D5185m	>20	<b>&lt;1</b>	---	---
Nickel	ppm	ASTM D5185m	>20	<b>0</b>	---	---
Titanium	ppm	ASTM D5185m		<b>&lt;1</b>	---	---
Silver	ppm	ASTM D5185m		<b>0</b>	---	---
Aluminum	ppm	ASTM D5185m	>20	<b>2</b>	---	---
Lead	ppm	ASTM D5185m	>20	<b>0</b>	---	---
Copper	ppm	ASTM D5185m	>20	<b>1</b>	---	---
Tin	ppm	ASTM D5185m	>20	<b>0</b>	---	---
Vanadium	ppm	ASTM D5185m		<b>0</b>	---	---
Cadmium	ppm	ASTM D5185m		<b>0</b>	---	---

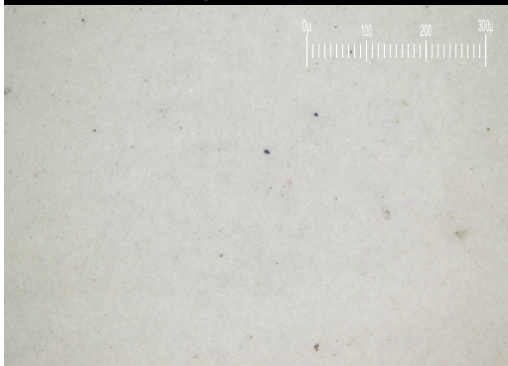
ADDITIVES		method	limit/base	current	history1	history2
Boron	ppm	ASTM D5185m		<b>0</b>	---	---
Barium	ppm	ASTM D5185m		<b>&lt;1</b>	---	---
Molybdenum	ppm	ASTM D5185m		<b>0</b>	---	---
Manganese	ppm	ASTM D5185m		<b>0</b>	---	---
Magnesium	ppm	ASTM D5185m		<b>31</b>	---	---
Calcium	ppm	ASTM D5185m		<b>27</b>	---	---
Phosphorus	ppm	ASTM D5185m		<b>329</b>	---	---
Zinc	ppm	ASTM D5185m		<b>420</b>	---	---
Sulfur	ppm	ASTM D5185m		<b>773</b>	---	---

CONTAMINANTS		method	limit/base	current	history1	history2
Silicon	ppm	ASTM D5185m	>15	<b>&lt;1</b>	---	---
Sodium	ppm	ASTM D5185m		<b>0</b>	---	---
Potassium	ppm	ASTM D5185m	>20	<b>&lt;1</b>	---	---

FLUID CLEANLINESS		method	limit/base	current	history1	history2
Particles >4µm	ASTM D7647	>1300	<b>▲ 24400</b>	---	---	
Particles >6µm	ASTM D7647	>160	<b>▲ 1917</b>	---	---	
Particles >14µm	ASTM D7647	>40	<b>34</b>	---	---	
Particles >21µm	ASTM D7647	>10	<b>5</b>	---	---	
Particles >38µm	ASTM D7647	>3	<b>0</b>	---	---	
Particles >71µm	ASTM D7647	>3	<b>0</b>	---	---	
Oil Cleanliness	ISO 4406 (c)	>17/14/12	<b>▲ 22/18/12</b>	---	---	

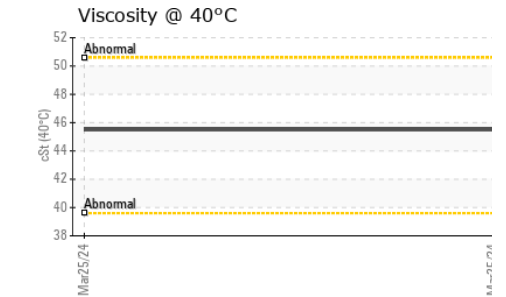
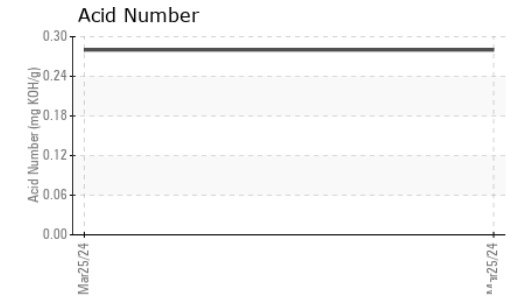
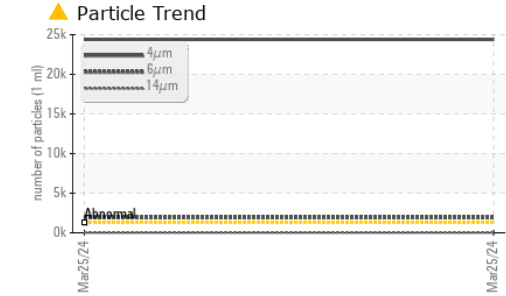
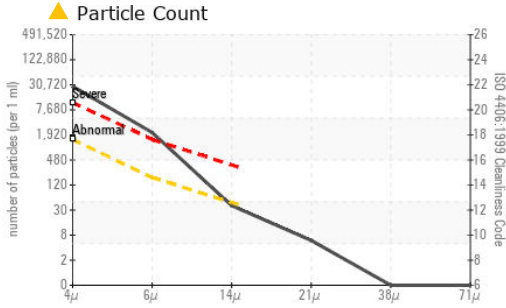
FLUID DEGRADATION		method	limit/base	current	history1	history2
Acid Number (AN)	mg KOH/g	ASTM D8045		<b>0.28</b>	---	---

Particle Filter (Magn: 200 x)





# OIL ANALYSIS REPORT



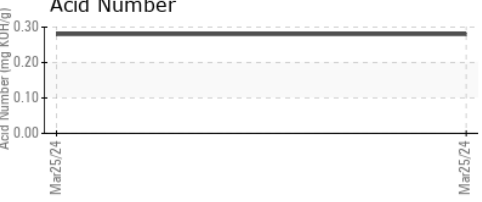
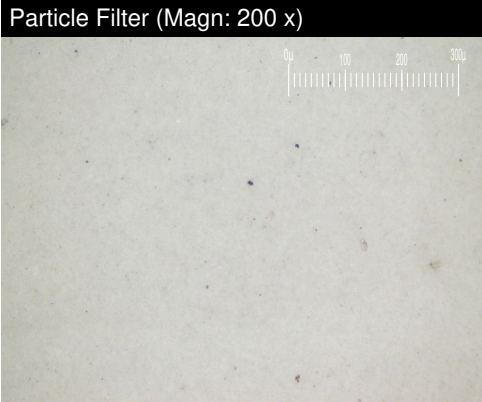
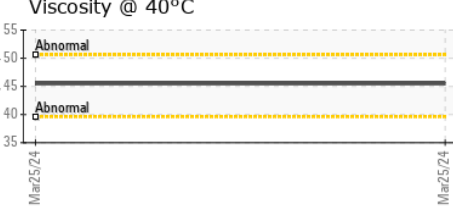
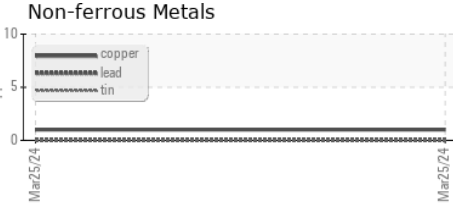
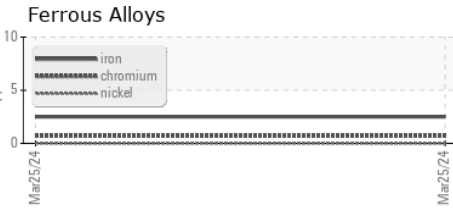
VISUAL	method	limit/base	current	history1	history2	
White Metal	scalar	*Visual	NONE	NONE	---	---
Yellow Metal	scalar	*Visual	NONE	NONE	---	---
Precipitate	scalar	*Visual	NONE	NONE	---	---
Silt	scalar	*Visual	NONE	NONE	---	---
Debris	scalar	*Visual	NONE	NONE	---	---
Sand/Dirt	scalar	*Visual	NONE	NONE	---	---
Appearance	scalar	*Visual	NORML	NORML	---	---
Odor	scalar	*Visual	NORML	NORML	---	---
Emulsified Water	scalar	*Visual	>0.05	NEG	---	---
Free Water	scalar	*Visual		NEG	---	---

FLUID PROPERTIES	method	limit/base	current	history1	history2
Visc @ 40°C	cSt	ASTM D445	45.5	---	---

SAMPLE IMAGES	method	limit/base	current	history1	history2
---------------	--------	------------	---------	----------	----------

Color				no image	no image
Bottom				no image	no image
PrtFilter				no image	no image

## GRAPHS



Certificate L2367

**Laboratory** : WearCheck USA - 501 Madison Ave., Cary, NC 27513  
**Sample No.** : PH0001595  
**Lab Number** : 06210749  
**Unique Number** : 11083613  
**Test Package** : PLANT ( Additional Tests: PrtFilter )

**Received** : 14 Jun 2024  
**Tested** : 19 Jun 2024  
**Diagnosed** : 19 Jun 2024 - Angela Borella

**IMPORTADORA RB INDUSTRIAL**  
 CHAPULTEPEC E COLEGIO LUZ OBRERA  
 PUEBLA, ZZ  
 MX 72110

Contact: Service Manager  
 cotizaciones@rbindustrial.mx

To discuss this sample report, contact Customer Service at 1-800-237-1369.

\* - Denotes test methods that are outside of the ISO 17025 scope of accreditation.

Statements of conformity to specifications are based on the simple acceptance decision rule (JCGM 106:2012)

T:  
F: