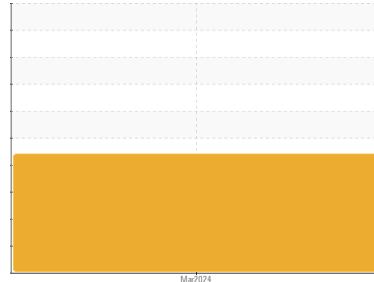




OIL ANALYSIS REPORT

Sample Rating Trend



DEGRADATION



Machine Id

20011-L03

Component

Hydraulic System

Fluid

SHELL OMALA S4 GXV 460 (150 LTR)

DIAGNOSIS

Recommendation

We recommend that you drain the oil from the component if this has not already been done. We recommend an early resample to monitor this condition.

Wear

The iron level is abnormal. All other component wear rates are normal.

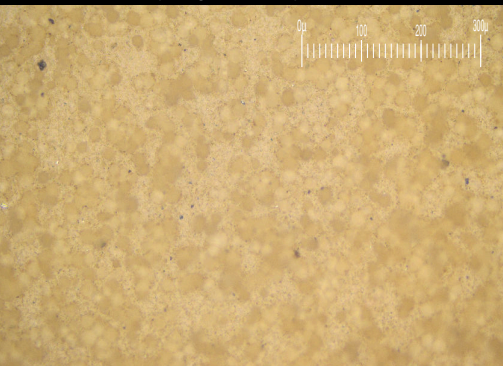
Contamination

There is a high amount of particulates present in the oil.

Fluid Condition

The AN level is above the recommended limit. Viscosity of sample indicates oil is within ISO 680 range, advise investigate. Confirm oil type.

Particle Filter (Magn: 200 x)



SAMPLE INFORMATION		method	limit/base	current	history1	history2
Sample Number	Client Info			PH0001566	---	---
Sample Date	Client Info			22 Mar 2024	---	---
Machine Age	hrs	Client Info		0	---	---
Oil Age	hrs	Client Info		0	---	---
Oil Changed	Client Info			N/A	---	---
Sample Status				ABNORMAL	---	---

CONTAMINATION		method	limit/base	current	history1	history2
Water	WC Method		>0.05	NEG	---	---

WEAR METALS		method	limit/base	current	history1	history2
Iron	ppm	ASTM D5185m	>20	▲ 30	---	---
Chromium	ppm	ASTM D5185m	>20	<1	---	---
Nickel	ppm	ASTM D5185m	>20	0	---	---
Titanium	ppm	ASTM D5185m		<1	---	---
Silver	ppm	ASTM D5185m		0	---	---
Aluminum	ppm	ASTM D5185m	>20	2	---	---
Lead	ppm	ASTM D5185m	>20	0	---	---
Copper	ppm	ASTM D5185m	>20	<1	---	---
Tin	ppm	ASTM D5185m	>20	0	---	---
Vanadium	ppm	ASTM D5185m		0	---	---
Cadmium	ppm	ASTM D5185m		0	---	---

ADDITIVES		method	limit/base	current	history1	history2
Boron	ppm	ASTM D5185m		36	---	---
Barium	ppm	ASTM D5185m		<1	---	---
Molybdenum	ppm	ASTM D5185m		0	---	---
Manganese	ppm	ASTM D5185m		0	---	---
Magnesium	ppm	ASTM D5185m		1	---	---
Calcium	ppm	ASTM D5185m		0	---	---
Phosphorus	ppm	ASTM D5185m		373	---	---
Zinc	ppm	ASTM D5185m		28	---	---
Sulfur	ppm	ASTM D5185m		5240	---	---

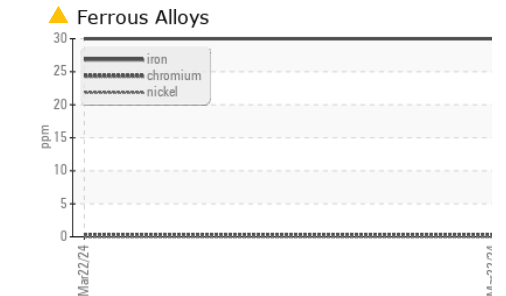
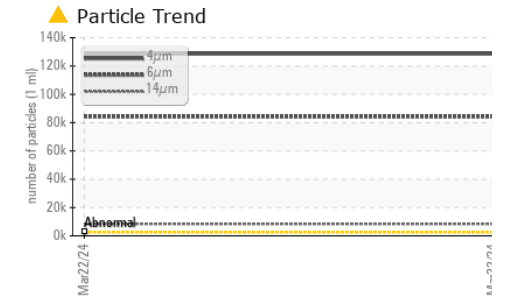
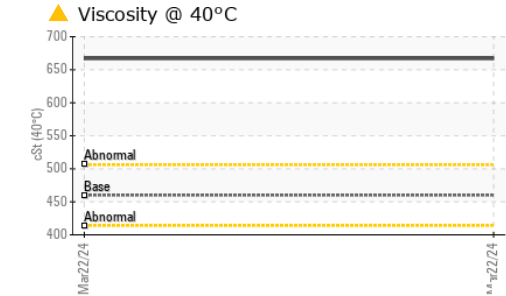
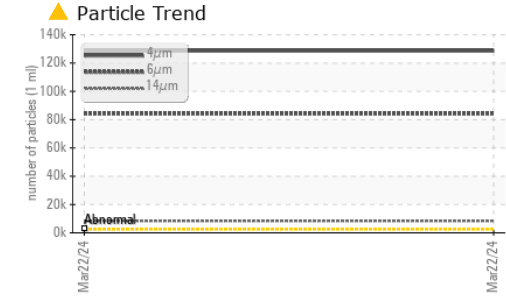
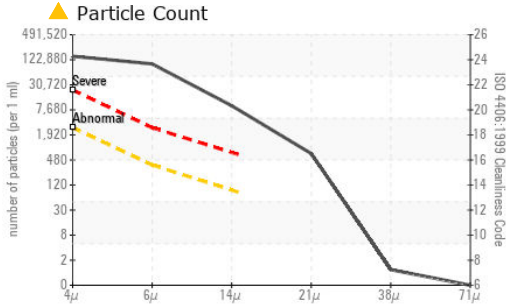
CONTAMINANTS		method	limit/base	current	history1	history2
Silicon	ppm	ASTM D5185m	>15	7	---	---
Sodium	ppm	ASTM D5185m		<1	---	---
Potassium	ppm	ASTM D5185m	>20	1	---	---

FLUID CLEANLINESS		method	limit/base	current	history1	history2
Particles >4µm		ASTM D7647	>2500	▲ 128594	---	---
Particles >6µm		ASTM D7647	>320	▲ 84168	---	---
Particles >14µm		ASTM D7647	>80	▲ 8408	---	---
Particles >21µm		ASTM D7647	>20	▲ 601	---	---
Particles >38µm		ASTM D7647	>4	1	---	---
Particles >71µm		ASTM D7647	>3	0	---	---
Oil Cleanliness		ISO 4406 (c)	>18/15/13	▲ 24/24/20	---	---

FLUID DEGRADATION		method	limit/base	current	history1	history2
Acid Number (AN)	mg KOH/g	ASTM D8045		▲ 2.161	---	---






OIL ANALYSIS REPORT



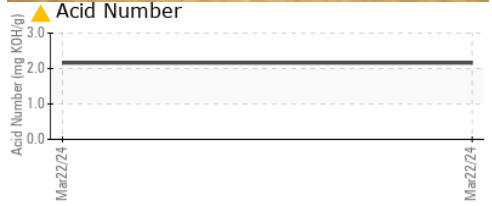
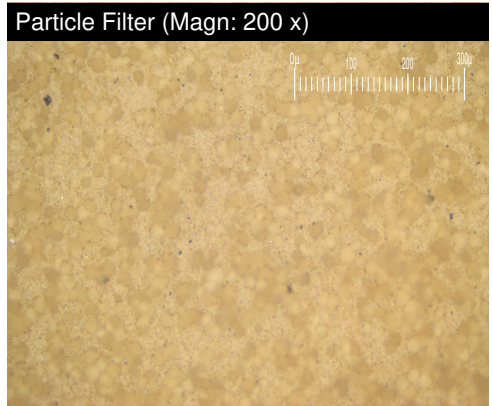
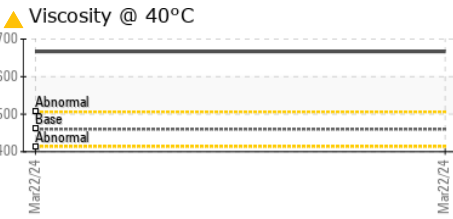
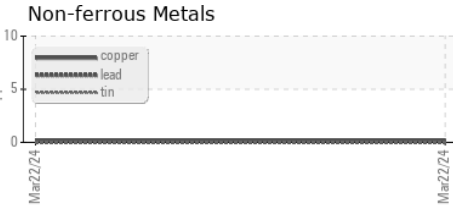
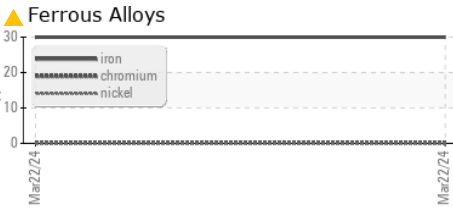
VISUAL	method	limit/base	current	history1	history2	
White Metal	scalar	*Visual	NONE	NONE	---	---
Yellow Metal	scalar	*Visual	NONE	NONE	---	---
Precipitate	scalar	*Visual	NONE	NONE	---	---
Silt	scalar	*Visual	NONE	NONE	---	---
Debris	scalar	*Visual	NONE	NONE	---	---
Sand/Dirt	scalar	*Visual	NONE	NONE	---	---
Appearance	scalar	*Visual	NORML	NORML	---	---
Odor	scalar	*Visual	NORML	NORML	---	---
Emulsified Water	scalar	*Visual	>0.05	NEG	---	---
Free Water	scalar	*Visual		NEG	---	---

FLUID PROPERTIES	method	limit/base	current	history1	history2	
Visc @ 40°C	cSt	ASTM D445	460	▲ 667	---	---

SAMPLE IMAGES	method	limit/base	current	history1	history2
---------------	--------	------------	---------	----------	----------

Color				no image	no image
Bottom				no image	no image
PrtFilter				no image	no image

GRAPHS



Certificate L2367

Laboratory : WearCheck USA - 501 Madison Ave., Cary, NC 27513

Sample No. : PH0001566

Lab Number : 06210757

Unique Number : 11083621

Test Package : PLANT (Additional Tests: PrtFilter)

Received : 14 Jun 2024

Tested : 19 Jun 2024

Diagnosed : 19 Jun 2024 - Angela Borella

IMPORTADORA RB INDUSTRIAL

CHAPULTEPEC E COLEGIO LUZ OBRERA

PUEBLA, ZZ

MX 72110

Contact: Service Manager

cotizaciones@rbindustrial.mx

T:

F:

To discuss this sample report, contact Customer Service at 1-800-237-1369.

* - Denotes test methods that are outside of the ISO 17025 scope of accreditation.

Statements of conformity to specifications are based on the simple acceptance decision rule (JCGM 106:2012)