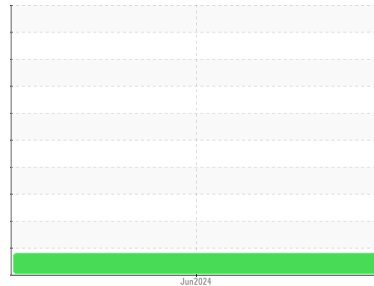




FUEL REPORT

Sample Rating Trend



ISO



Area
CAROLINA MEADOWS
 Machine Id
AUDITORIUM

Component
Diesel Fuel
 Fluid
No.2 DIESEL FUEL (ULTRALOW SULPHUR) (--- GAL)

DIAGNOSIS

Recommendation

We advise that you filter this fluid before use. All laboratory tests indicate that this sample meets specifications for No.2 diesel fuel.

Corrosion

All metal levels are normal indicating no corrosion in the system.

Contaminants

There is a moderate amount of particulates present in the fuel. The water content is negligible. There is no bacteria or fungus (yeast and/or mold) indicated in the sample. There is no indication of any contamination in the fuel.

Fuel Condition

Sulfur value derived by ASTM D5453 method for ULSD validation.

SAMPLE INFORMATION		method	limit/base	current	history1	history2
Sample Number	Client Info			WC06211175	---	---
Sample Date	Client Info			16 Jun 2024	---	---
Machine Age	mls	Client Info		0	---	---
Sample Status				ABNORMAL	---	---

PHYSICAL PROPERTIES		method	limit/base	current	history1	history2
Fuel Color	text	*Visual Screen	Yellow	Red	---	---
ASTM Color	scalar	*ASTM D1500		L4.5	---	---
Pensky-Martens Flash Point	°C	*PMCC Calculated	52	63	---	---

SULFUR CONTENT		method	limit/base	current	history1	history2
Sulfur	ppm	ASTM D5185m	10	0	---	---
Sulfur (UVF)	ppm	ASTM D5453		643	---	---

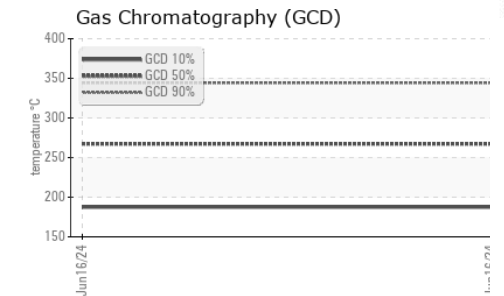
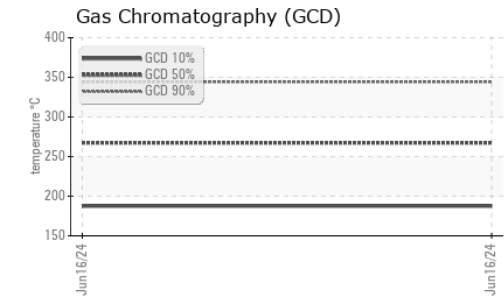
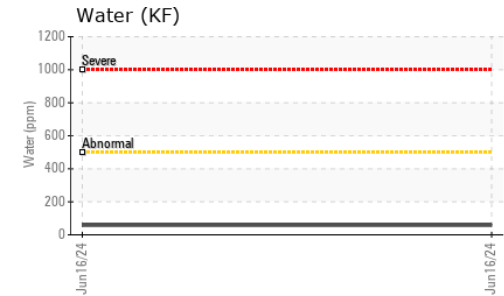
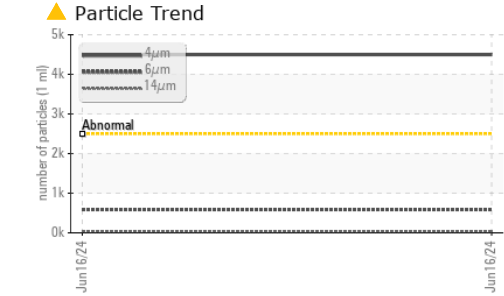
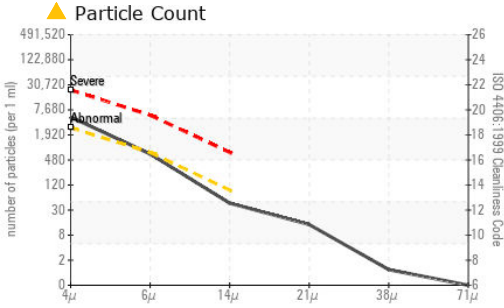
DISTILLATION		method	limit/base	current	history1	history2
Initial Boiling Point	°C	ASTM D86	165	174	---	---
5% Distillation Point	°C	ASTM D86		199	---	---
10% Distill Point	°C	ASTM D86	201	209	---	---
15% Distillation Point	°C	ASTM D86		217	---	---
20% Distill Point	°C	ASTM D86	216	225	---	---
30% Distill Point	°C	ASTM D86	230	239	---	---
40% Distill Point	°C	ASTM D86	243	251	---	---
50% Distill Point	°C	ASTM D86	255	264	---	---
60% Distill Point	°C	ASTM D86	267	277	---	---
70% Distill Point	°C	ASTM D86	280	290	---	---
80% Distill Point	°C	ASTM D86	295	304	---	---
85% Distillation Point	°C	ASTM D86		314	---	---
90% Distill Point	°C	ASTM D86	310	324	---	---
95% Distillation Point	°C	ASTM D86		340	---	---
Final Boiling Point	°C	ASTM D86	341	355	---	---

IGNITION QUALITY		method	limit/base	current	history1	history2
API Gravity		ASTM D7777	37.7	34	---	---
Cetane Index		ASTM D4737	<40.0	45	---	---

CONTAMINANTS		method	limit/base	current	history1	history2
Silicon	ppm	ASTM D5185m	<1.0	0	---	---
Sodium	ppm	ASTM D5185m	<0.1	<1	---	---
Potassium	ppm	ASTM D5185m	<0.1	0	---	---
Water	%	ASTM D6304	<0.05	0.005	---	---
ppm Water	ppm	ASTM D6304	<500	58	---	---
% Gasoline	%	*In-House	<0.50	0.0	---	---
% Biodiesel	%	*In-House	<20.0	0.0	---	---



FUEL REPORT

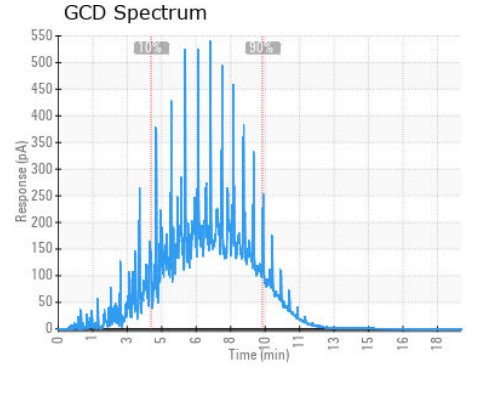
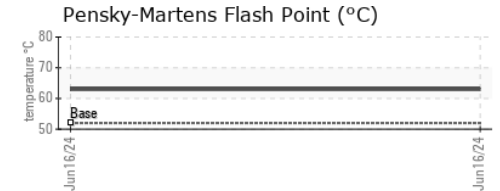
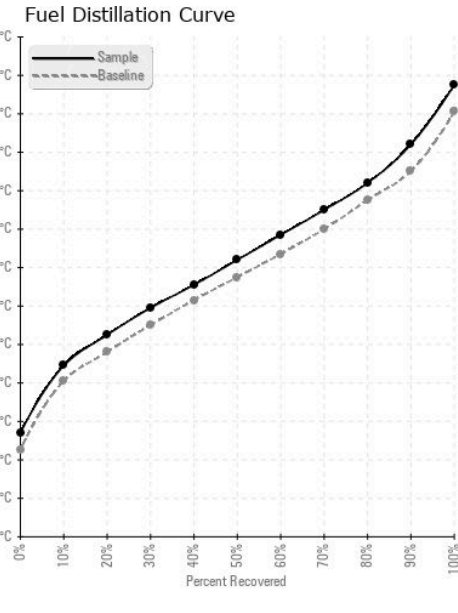


FLUID CLEANLINESS	method	limit/base	current	history1	history2
Particles >4µm	ASTM D7647	>2500	▲ 4498	---	---
Particles >6µm	ASTM D7647	>640	588	---	---
Particles >14µm	ASTM D7647	>80	39	---	---
Particles >21µm	ASTM D7647	>20	12	---	---
Particles >38µm	ASTM D7647	>4	1	---	---
Particles >71µm	ASTM D7647	>3	0	---	---
Oil Cleanliness	ISO 4406 (c)	>18/16/13	▲ 19/16/12	---	---

HEAVY METALS	method	limit/base	current	history1	history2
Aluminum	ppm	ASTM D5185m <0.1	0	---	---
Nickel	ppm	ASTM D5185m <0.1	0	---	---
Lead	ppm	ASTM D5185m <0.1	0	---	---
Vanadium	ppm	ASTM D5185m <0.1	0	---	---
Iron	ppm	ASTM D5185m <0.1	0	---	---
Calcium	ppm	ASTM D5185m <0.1	0	---	---
Magnesium	ppm	ASTM D5185m <0.1	0	---	---
Phosphorus	ppm	ASTM D5185m <0.1	0	---	---
Zinc	ppm	ASTM D5185m <0.1	0	---	---

SAMPLE IMAGES	method	limit/base	current	history1	history2
Color				no image	no image
Bottom				no image	no image

GRAPHS



Laboratory : WearCheck USA - 501 Madison Ave., Cary, NC 27513
Sample No. : WC06211175 **Received** : 14 Jun 2024
Lab Number : 06211175 **Tested** : 20 Jun 2024
Unique Number : 11084039 **Diagnosed** : 20 Jun 2024 - Elizabeth Valachovic
Test Package : DF-2 (Additional Tests: Fuel, Screen)

COUCH OIL COMPANY
 2907 HILLSBOROUGH RD
 DURHAM, NC
 US 27705
 Contact: JESSE BROWN
 jesse@couchoilcompany.com
 T: (919)285-5408
 F:

To discuss this sample report, contact Customer Service at 1-800-237-1369.
 * - Denotes test methods that are outside of the ISO 17025 scope of accreditation.
 Statements of conformity to specifications are based on the simple acceptance decision rule (JCGM 106:2012)