



# FUEL REPORT

Sample Rating Trend



**NORMAL**



Area  
**CAROLINA MEADOWS**  
 Machine Id  
**PINES REAR**

Component  
**Diesel Fuel**  
 Fluid  
**No.2 DIESEL FUEL (ULTRALOW SULPHUR) (--- GAL)**

## DIAGNOSIS

### Recommendation

No corrective action is recommended at this time. All laboratory tests indicate that this sample meets specifications for No.2 low-sulfur diesel fuel.

### Corrosion

All metal levels are normal indicating no corrosion in the system.

### Contaminants

Light concentration of visible dirt/debris present in the fuel. The water content is negligible. There is no bacteria or fungus (yeast and/or mold) indicated in the sample. The amount and size of particulates present in the system are acceptable.

### Fuel Condition

Sulfur value derived by ASTM D5453 method for ULSD validation.

SAMPLE INFORMATION		method	limit/base	current	history1	history2
Sample Number	Client Info			<b>WC06211177</b>	---	---
Sample Date	Client Info			<b>16 Jun 2024</b>	---	---
Machine Age	mls	Client Info		<b>0</b>	---	---
Sample Status				<b>NORMAL</b>	---	---

PHYSICAL PROPERTIES		method	limit/base	current	history1	history2
Fuel Color	text	*Visual Screen	Yellow	<b>Red</b>	---	---
ASTM Color	scalar	*ASTM D1500		<b>L4.5</b>	---	---
Pensky-Martens Flash Point	°C	*PMCC Calculated	52	<b>60.7</b>	---	---

SULFUR CONTENT		method	limit/base	current	history1	history2
Sulfur	ppm	ASTM D5185m	10	<b>1442</b>	---	---
Sulfur (UVF)	ppm	ASTM D5453		<b>128</b>	---	---

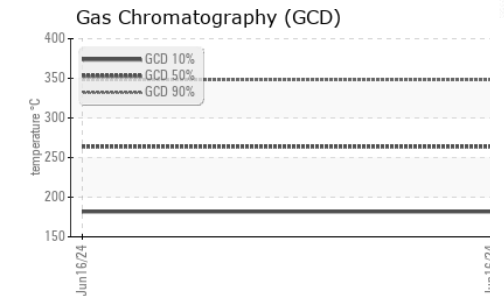
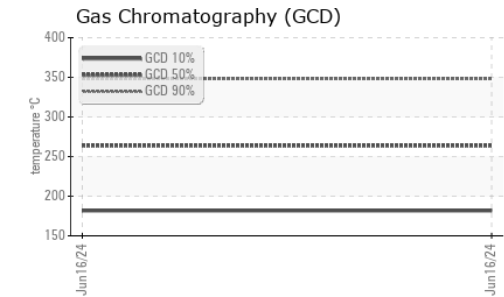
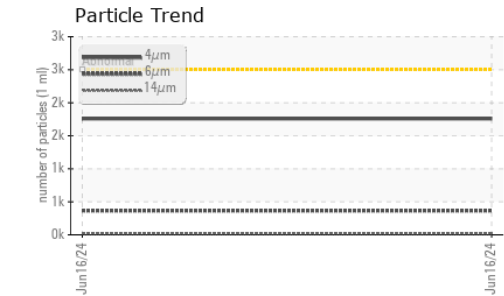
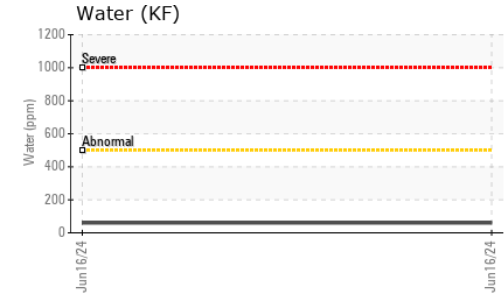
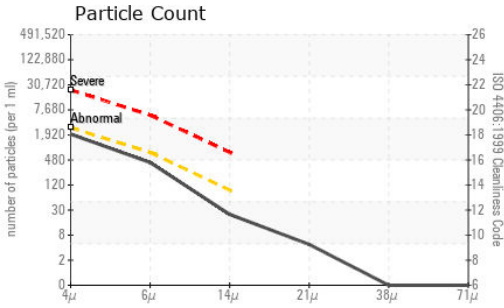
DISTILLATION		method	limit/base	current	history1	history2
Initial Boiling Point	°C	ASTM D86	165	<b>171</b>	---	---
5% Distillation Point	°C	ASTM D86		<b>194</b>	---	---
10% Distill Point	°C	ASTM D86	201	<b>203</b>	---	---
15% Distillation Point	°C	ASTM D86		<b>211</b>	---	---
20% Distill Point	°C	ASTM D86	216	<b>219</b>	---	---
30% Distill Point	°C	ASTM D86	230	<b>234</b>	---	---
40% Distill Point	°C	ASTM D86	243	<b>247</b>	---	---
50% Distill Point	°C	ASTM D86	255	<b>261</b>	---	---
60% Distill Point	°C	ASTM D86	267	<b>275</b>	---	---
70% Distill Point	°C	ASTM D86	280	<b>290</b>	---	---
80% Distill Point	°C	ASTM D86	295	<b>305</b>	---	---
85% Distillation Point	°C	ASTM D86		<b>316</b>	---	---
90% Distill Point	°C	ASTM D86	310	<b>327</b>	---	---
95% Distillation Point	°C	ASTM D86		<b>344</b>	---	---
Final Boiling Point	°C	ASTM D86	341	<b>359</b>	---	---

IGNITION QUALITY		method	limit/base	current	history1	history2
API Gravity		ASTM D7777	37.7	<b>36</b>	---	---
Cetane Index		ASTM D4737	<40.0	<b>47</b>	---	---

CONTAMINANTS		method	limit/base	current	history1	history2
Silicon	ppm	ASTM D5185m	<1.0	<b>0</b>	---	---
Sodium	ppm	ASTM D5185m	<0.1	<b>&lt;1</b>	---	---
Potassium	ppm	ASTM D5185m	<0.1	<b>0</b>	---	---
Water	%	ASTM D6304	<0.05	<b>0.006</b>	---	---
ppm Water	ppm	ASTM D6304	<500	<b>60</b>	---	---
% Gasoline	%	*In-House	<0.50	<b>0.0</b>	---	---
% Biodiesel	%	*In-House	<20.0	<b>0.0</b>	---	---



# FUEL REPORT

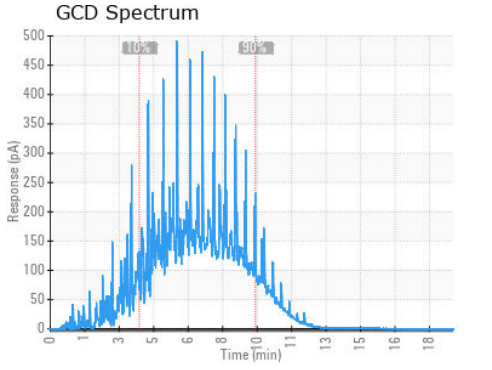
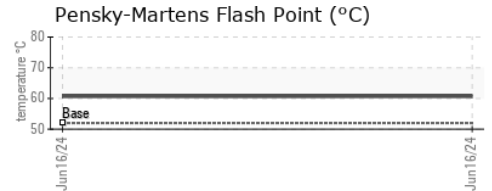
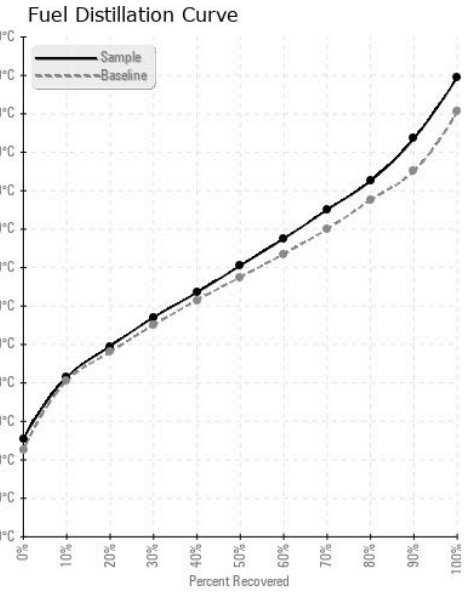


FLUID CLEANLINESS	method	limit/base	current	history1	history2
Particles >4µm	ASTM D7647	>2500	<b>1758</b>	---	---
Particles >6µm	ASTM D7647	>640	<b>366</b>	---	---
Particles >14µm	ASTM D7647	>80	<b>21</b>	---	---
Particles >21µm	ASTM D7647	>20	<b>4</b>	---	---
Particles >38µm	ASTM D7647	>4	<b>0</b>	---	---
Particles >71µm	ASTM D7647	>3	<b>0</b>	---	---
Oil Cleanliness	ISO 4406 (c)	>18/16/13	<b>18/16/12</b>	---	---

HEAVY METALS	method	limit/base	current	history1	history2
Aluminum	ppm	ASTM D5185m <0.1	<b>0</b>	---	---
Nickel	ppm	ASTM D5185m <0.1	<b>0</b>	---	---
Lead	ppm	ASTM D5185m <0.1	<b>0</b>	---	---
Vanadium	ppm	ASTM D5185m <0.1	<b>0</b>	---	---
Iron	ppm	ASTM D5185m <0.1	<b>0</b>	---	---
Calcium	ppm	ASTM D5185m <0.1	<b>0</b>	---	---
Magnesium	ppm	ASTM D5185m <0.1	<b>0</b>	---	---
Phosphorus	ppm	ASTM D5185m <0.1	<b>0</b>	---	---
Zinc	ppm	ASTM D5185m <0.1	<b>0</b>	---	---

SAMPLE IMAGES	method	limit/base	current	history1	history2
Color				no image	no image
Bottom				no image	no image

## GRAPHS



**Laboratory** : WearCheck USA - 501 Madison Ave., Cary, NC 27513  
**Sample No.** : WC06211177 **Received** : 14 Jun 2024  
**Lab Number** : **06211177** **Tested** : 20 Jun 2024  
**Unique Number** : 11084041 **Diagnosed** : 20 Jun 2024 - Elizabeth Valachovic  
**Test Package** : DF-2 ( Additional Tests: Fuel, Screen )

**COUCH OIL COMPANY**  
 2907 HILLSBOROUGH RD  
 DURHAM, NC  
 US 27705  
 Contact: JESSE BROWN  
 jesse@couchoilcompany.com  
 T: (919)285-5408  
 F:

To discuss this sample report, contact Customer Service at 1-800-237-1369.  
 \* - Denotes test methods that are outside of the ISO 17025 scope of accreditation.  
 Statements of conformity to specifications are based on the simple acceptance decision rule (JCGM 106:2012)