



COOLANT REPORT

Sample Rating Trend



WEAR



Area
BLACKJACK CREEK [200007683]
 Machine Id
WEA88410 - A-06
 Component
Coolant
 Fluid
{not provided} (--- LTR)

DIAGNOSIS

▲ Recommendation
 No corrective action is recommended at this time. The fluid is suitable for further service.

▲ Corrosion
 The aluminum level is abnormal.

Contaminants
 There is no indication of any contamination in the coolant.

Coolant Condition
 Glycol and nitrite levels are acceptable. The pH level of this fluid is within the acceptable limits.

SAMPLE INFORMATION

method	limit/base	current	history1	history2
Sample Number	Client Info	NX015632	---	---
Sample Date	Client Info	21 May 2024	---	---
Machine Age	hrs Client Info	21034536	---	---
Oil Age	hrs Client Info	0	---	---
Oil Changed	Client Info	N/A	---	---
Sample Status		ABNORMAL	---	---

PHYSICAL TEST RESULTS

method	limit/base	current	history1	history2
Glycol Type	FT-IR	---	---	---
Specific Gravity	*ASTM D1298	1.059	---	---
pH	Scale 0-14 ASTM D1287	7.69	---	---
Nitrites	ppm AP-053:2009	372	---	---
Reserve Alkalinity	Scale 0-20 *ASTM D1121	---	---	---
Percentage Glycol	% ASTM D3321	43.5	---	---
Freezing Point	°F ASTM D3321	-19	---	---
Total Dissolved Solids		252.0	---	---
Carboxylate		n/a	---	---

CORROSION INHIBITORS

method	limit/base	current	history1	history2
Silicon	ppm ASTM D6130	4	---	---
Phosphorus	ppm ASTM D6130	0	---	---
Boron	ppm ASTM D6130	0	---	---
Molybdenum	ppm ASTM D6130	144	---	---

CORROSION

method	limit/base	current	history1	history2
Iron	ppm ASTM D6130 >15	<1	---	---
Aluminum	ppm ASTM D6130 >10	▲ 14	---	---
Copper	ppm ASTM D6130 >10	<1	---	---
Lead	ppm ASTM D6130 >10	0	---	---
Tin	ppm ASTM D6130 >10	0	---	---
Zinc	ppm ASTM D6130	12	---	---

CONTAMINANTS

method	limit/base	current	history1	history2
Chlorine	ppm ASTM D6130	4	---	---

CARRIER SALTS

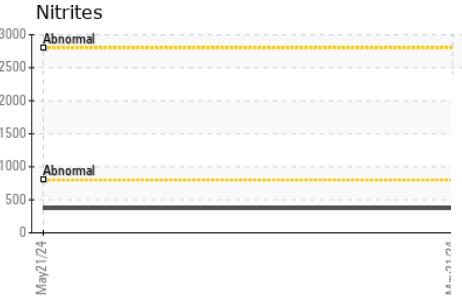
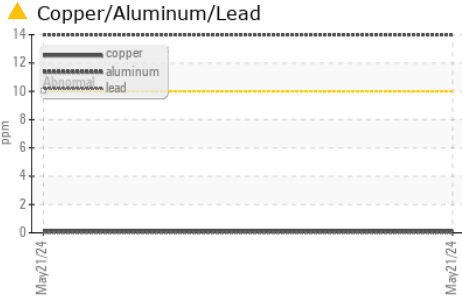
method	limit/base	current	history1	history2
Sodium	ppm ASTM D6130	3492	---	---
Potassium	ppm ASTM D6130	328	---	---



SCALE POTENTIAL

method	limit/base	current	history1	history2
Calcium	ppm ASTM D6130	4	---	---
Magnesium	ppm ASTM D6130	3	---	---

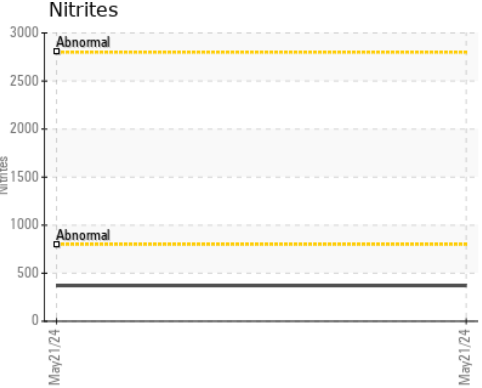
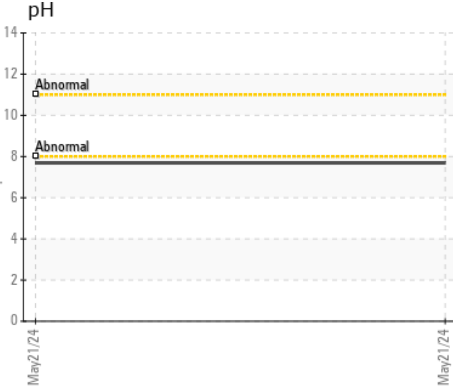
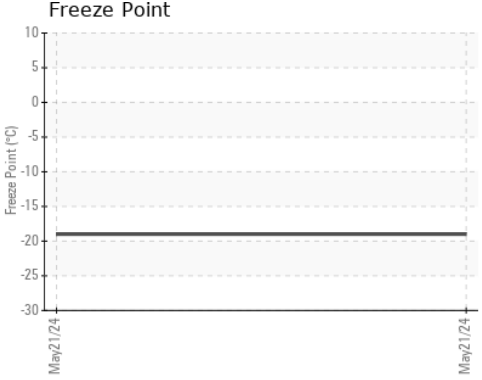
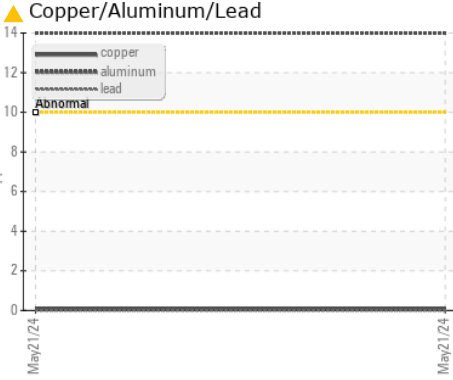
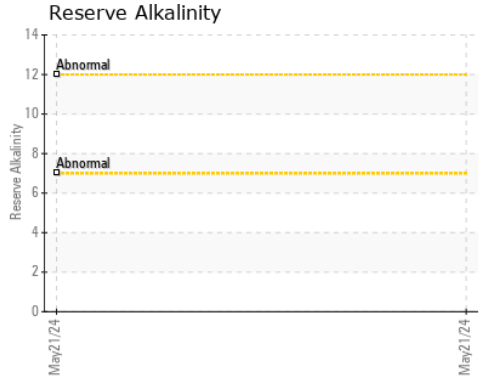
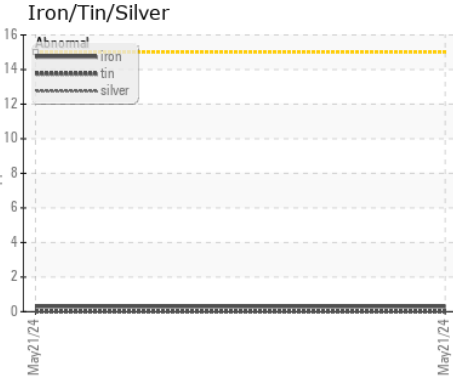


COOLANT REPORT



VISUAL	method	limit/base	current	history1	history2
Coolant Color	*Visual		Yllow	---	---
Coolant Appearance	*Visual	Clear	normal	---	---
Color				no image	no image
Bottom				no image	no image

GRAPHS



Certificate L2367

Laboratory : WearCheck USA - 501 Madison Ave., Cary, NC 27513
Sample No. : NX015632
Lab Number : **06211183**
Unique Number : 11084047
Test Package : COOL- (Additional Tests: GlycolType, ICP)

Received : 14 Jun 2024
Tested : 20 Jun 2024
Diagnosed : 20 Jun 2024 - Jonathan Hester

NORDEX USA - Chicago
 300 SOUTH WACKER DRIVE, SUITE 1500
 CHICAGO, IL
 US 60606

Contact: DEVIN LINEHAN
 DLinehan@nordex-online.com

To discuss this sample report, contact Customer Service at 1-800-237-1369.

* - Denotes test methods that are outside of the ISO 17025 scope of accreditation.

Statements of conformity to specifications are based on the simple acceptance decision rule (JCGM 106:2012)

T: (312)386-4124

F: (312)386-7102