



# OIL ANALYSIS REPORT

Sample Rating Trend



VIS DEBRIS



Machine Id  
**EAST DUMPER**  
 Component  
**Hydraulic System**  
 Fluid  
 {not provided} (--- GAL)

## DIAGNOSIS

### Recommendation

We recommend you service the filters on this component. Resample at the next service interval to monitor. We were unable to perform a particle count due to a high concentration of particles present in this sample.

### Wear

All component wear rates are normal.

### Contamination

Moderate concentration of visible dirt/debris present in the oil.

### Fluid Condition

The AN level is acceptable for this fluid. The condition of the oil is acceptable for the time in service.

SAMPLE INFORMATION		method	limit/base	current	history1	history2
Sample Number	Client Info			<b>PH0001533</b>	---	---
Sample Date	Client Info			<b>16 Jun 2024</b>	---	---
Machine Age	hrs	Client Info		<b>0</b>	---	---
Oil Age	hrs	Client Info		<b>0</b>	---	---
Oil Changed	Client Info			<b>N/A</b>	---	---
Sample Status				<b>ABNORMAL</b>	---	---

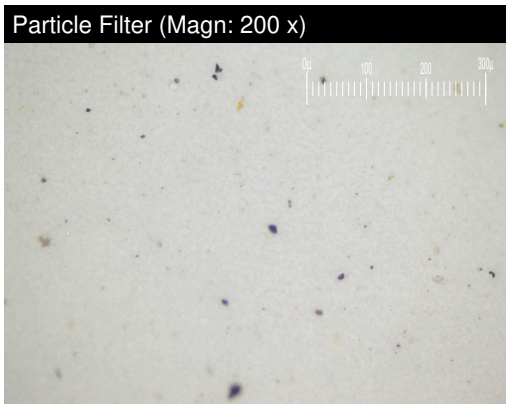
WEAR METALS		method	limit/base	current	history1	history2
Iron	ppm	ASTM D5185m	>20	<b>3</b>	---	---
Chromium	ppm	ASTM D5185m	>20	<b>&lt;1</b>	---	---
Nickel	ppm	ASTM D5185m	>20	<b>&lt;1</b>	---	---
Titanium	ppm	ASTM D5185m		<b>&lt;1</b>	---	---
Silver	ppm	ASTM D5185m		<b>0</b>	---	---
Aluminum	ppm	ASTM D5185m	>20	<b>2</b>	---	---
Lead	ppm	ASTM D5185m	>20	<b>&lt;1</b>	---	---
Copper	ppm	ASTM D5185m	>20	<b>&lt;1</b>	---	---
Tin	ppm	ASTM D5185m	>20	<b>&lt;1</b>	---	---
Vanadium	ppm	ASTM D5185m		<b>0</b>	---	---
Cadmium	ppm	ASTM D5185m		<b>&lt;1</b>	---	---

ADDITIVES		method	limit/base	current	history1	history2
Boron	ppm	ASTM D5185m		<b>&lt;1</b>	---	---
Barium	ppm	ASTM D5185m		<b>0</b>	---	---
Molybdenum	ppm	ASTM D5185m		<b>2</b>	---	---
Manganese	ppm	ASTM D5185m		<b>&lt;1</b>	---	---
Magnesium	ppm	ASTM D5185m		<b>8</b>	---	---
Calcium	ppm	ASTM D5185m		<b>309</b>	---	---
Phosphorus	ppm	ASTM D5185m		<b>326</b>	---	---
Zinc	ppm	ASTM D5185m		<b>429</b>	---	---
Sulfur	ppm	ASTM D5185m		<b>892</b>	---	---

CONTAMINANTS		method	limit/base	current	history1	history2
Silicon	ppm	ASTM D5185m	>15	<b>1</b>	---	---
Sodium	ppm	ASTM D5185m		<b>1</b>	---	---
Potassium	ppm	ASTM D5185m	>20	<b>2</b>	---	---
Water	%	ASTM D6304	>0.05	<b>NEG</b>	---	---

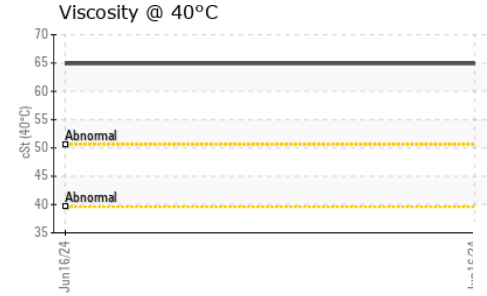
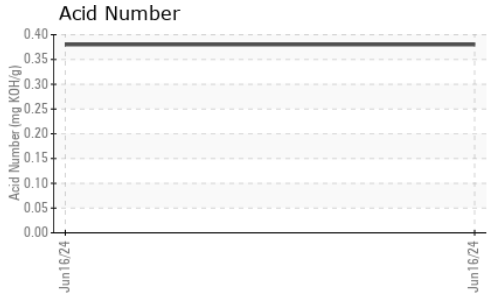
FLUID DEGRADATION		method	limit/base	current	history1	history2
Acid Number (AN)	mg KOH/g	ASTM D8045		<b>0.38</b>	---	---

VISUAL		method	limit/base	current	history1	history2
White Metal	scalar	*Visual	NONE	<b>NONE</b>	---	---
Yellow Metal	scalar	*Visual	NONE	<b>NONE</b>	---	---
Precipitate	scalar	*Visual	NONE	<b>NONE</b>	---	---
Silt	scalar	*Visual	NONE	<b>NONE</b>	---	---
Debris	scalar	*Visual	NONE	<b>▲ MODER</b>	---	---
Sand/Dirt	scalar	*Visual	NONE	<b>NONE</b>	---	---
Appearance	scalar	*Visual	NORML	<b>NORML</b>	---	---
Odor	scalar	*Visual	NORML	<b>NORML</b>	---	---
Emulsified Water	scalar	*Visual	>0.05	<b>NEG</b>	---	---
Free Water	scalar	*Visual		<b>NEG</b>	---	---





# OIL ANALYSIS REPORT

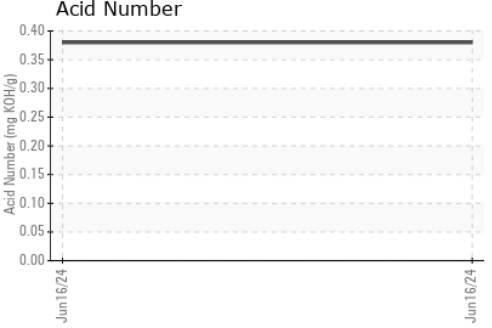
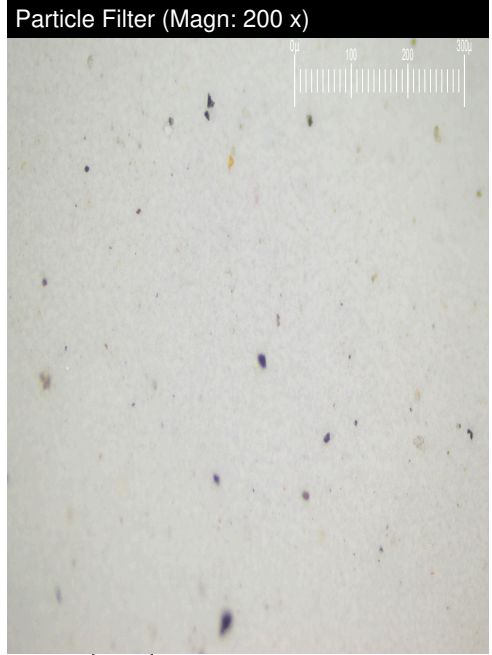
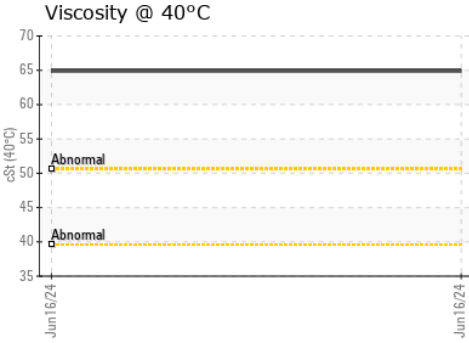
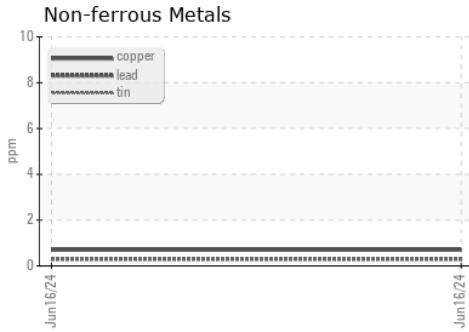
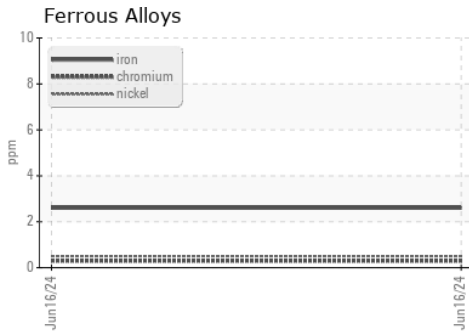


FLUID PROPERTIES	method	limit/base	current	history1	history2
Visc @ 40°C	cSt	ASTM D445	64.9	---	---

SAMPLE IMAGES	method	limit/base	current	history1	history2
---------------	--------	------------	---------	----------	----------

Color				no image	no image
Bottom				no image	no image
PrtFilter				no image	no image

## GRAPHS



Certificate L2367

**Laboratory** : WearCheck USA - 501 Madison Ave., Cary, NC 27513  
**Sample No.** : PH0001533  
**Lab Number** : 06211603  
**Unique Number** : 11084467  
**Test Package** : PLANT ( Additional Tests: KF, PQ, PrtFilter )

**Received** : 17 Jun 2024  
**Tested** : 19 Jun 2024  
**Diagnosed** : 19 Jun 2024 - Angela Borella

**PARKER HANNIFIN CORPORATION-OIL LAB**  
 501 MADISON AVENUE  
 CARY, NC  
 US 27513  
 Contact: JAY GRONBACH  
 jay.gronbach@parker.com

To discuss this sample report, CONTACT Customer Service at 1-800-237-1369.

\* - Denotes test methods that are outside of the ISO 17025 scope of accreditation.

Statements of conformity to specifications are based on the simple acceptance decision rule (JCGM 106:2012)

T:  
F: