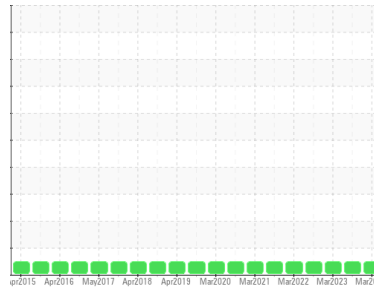




OIL ANALYSIS REPORT

Sample Rating Trend



NORMAL



Area
FOUR MILE RIDGE [200009521]
 Machine Id
83441 SITE 10
 Component
Wind Turbine Gearbox
 Fluid
CASTROL OPTIGEAR SYNTHETIC X 320 (--- LTR)

DIAGNOSIS

Recommendation

Resample at the next service interval to monitor.

Wear

All component wear rates are normal.

Contamination

There is no indication of any contamination in the component. The amount and size of particulates present in the system is acceptable.

Fluid Condition

The AN level is acceptable for this fluid. The condition of the oil is suitable for further service.

SAMPLE INFORMATION

	method	limit/base	current	history1	history2
Sample Number	Client Info		NX012312	NX012354	NX004194
Sample Date	Client Info		18 Mar 2024	01 Dec 2023	09 Mar 2023
Machine Age	hrs	Client Info	71735	68346	62118
Oil Age	hrs	Client Info	71735	68346	62118
Oil Changed	Client Info		Not Changed	Not Changed	Not Changed
Sample Status			NORMAL	NORMAL	NORMAL

WEAR METALS

	method	limit/base	current	history1	history2
PQ	ASTM D8184	>80	19	10	13
Iron	ppm	ASTM D5185m	>150	3	<1
Chromium	ppm	ASTM D5185m	>5	<1	0
Nickel	ppm	ASTM D5185m	>10	<1	0
Titanium	ppm	ASTM D5185m	>10	<1	0
Silver	ppm	ASTM D5185m		0	0
Aluminum	ppm	ASTM D5185m	>10	6	6
Lead	ppm	ASTM D5185m	>20	<1	0
Copper	ppm	ASTM D5185m	>50	2	1
Tin	ppm	ASTM D5185m	>10	0	<1
Vanadium	ppm	ASTM D5185m		<1	<1
Cadmium	ppm	ASTM D5185m		<1	0

ADDITIVES

	method	limit/base	current	history1	history2
Boron	ppm	ASTM D5185m		0	29
Barium	ppm	ASTM D5185m		4	1
Molybdenum	ppm	ASTM D5185m	1150	727	762
Manganese	ppm	ASTM D5185m		<1	<1
Magnesium	ppm	ASTM D5185m		5	8
Calcium	ppm	ASTM D5185m	2000	1365	1412
Phosphorus	ppm	ASTM D5185m	400	316	353
Zinc	ppm	ASTM D5185m	0	0	0
Sulfur	ppm	ASTM D5185m	1850	1818	1810

CONTAMINANTS

	method	limit/base	current	history1	history2
Silicon	ppm	ASTM D5185m	>50	11	10
Sodium	ppm	ASTM D5185m	>20	5	5
Potassium	ppm	ASTM D5185m	>20	1	<1
Water	%	ASTM D6304	>0.05	0.013	0.007
ppm Water	ppm	ASTM D6304	>500	140	77

FLUID CLEANLINESS

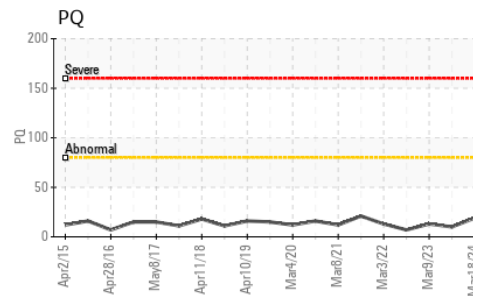
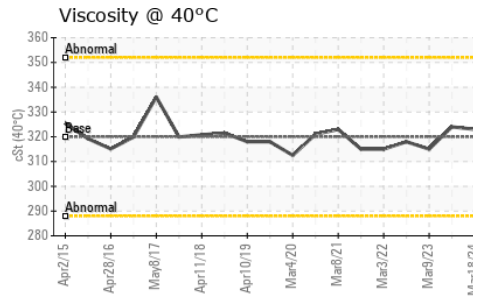
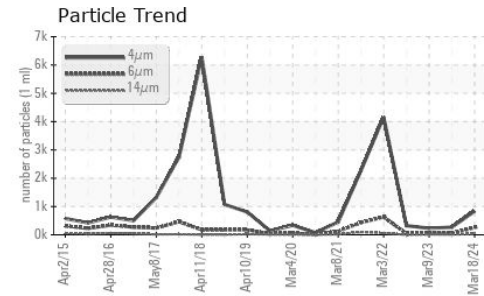
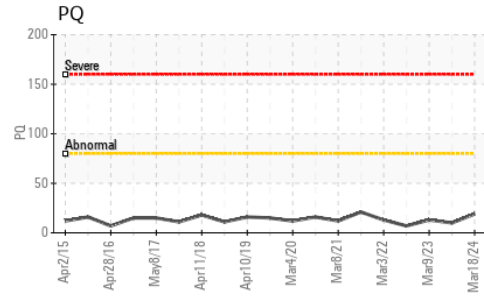
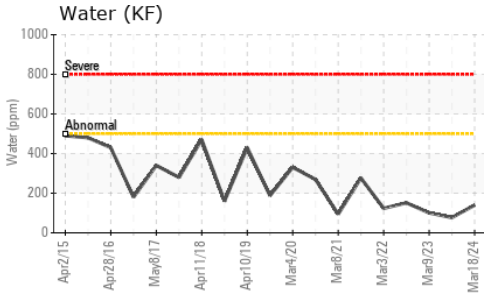
	method	limit/base	current	history1	history2
Particles >4µm	ASTM D7647		836	269	231
Particles >6µm	ASTM D7647	>2500	257	44	67
Particles >14µm	ASTM D7647	>320	30	10	14
Particles >21µm	ASTM D7647	>80	10	5	5
Particles >38µm	ASTM D7647	>20	1	0	0
Particles >71µm	ASTM D7647	>4	0	0	0
Oil Cleanliness	ISO 4406 (c)	>--/18/15	17/15/12	15/13/10	15/13/11

FLUID DEGRADATION

	method	limit/base	current	history1	history2
Acid Number (AN)	mg KOH/g	ASTM D8045	1.6	0.73	0.82



OIL ANALYSIS REPORT



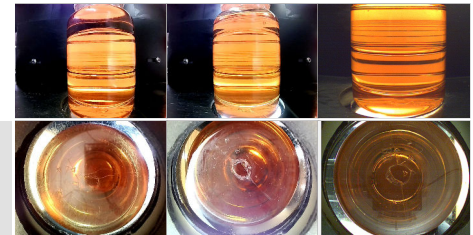
VISUAL	method	limit/base	current	history1	history2
White Metal	scalar	*Visual	NONE	NONE	NONE
Yellow Metal	scalar	*Visual	NONE	NONE	NONE
Precipitate	scalar	*Visual	NONE	NONE	NONE
Silt	scalar	*Visual	NONE	NONE	NONE
Debris	scalar	*Visual	NONE	NONE	NONE
Sand/Dirt	scalar	*Visual	NONE	NONE	NONE
Appearance	scalar	*Visual	NORML	NORML	NORML
Odor	scalar	*Visual	NORML	NORML	NORML
Emulsified Water	scalar	*Visual	>0.05	NEG	NEG
Free Water	scalar	*Visual		NEG	NEG

FLUID PROPERTIES	method	limit/base	current	history1	history2
Visc @ 40°C	cSt	ASTM D445 320	323	324	315

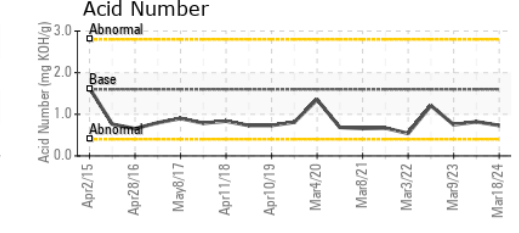
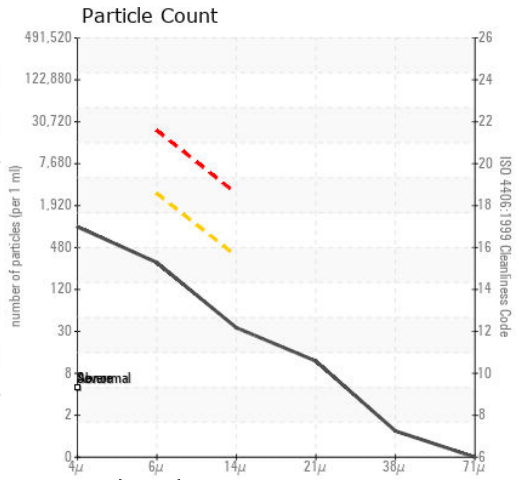
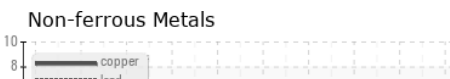
SAMPLE IMAGES	method	limit/base	current	history1	history2
---------------	--------	------------	---------	----------	----------

Color

Bottom



GRAPHS



Certificate L2367

Laboratory : WearCheck USA - 501 Madison Ave., Cary, NC 27513

Sample No. : NX012312

Lab Number : 06211619

Unique Number : 11084483

Test Package : IND 2 (Additional Tests: KF, PQ, PrcCount)

To discuss this sample report, contact Customer Service at 1-800-237-1369.

* - Denotes test methods that are outside of the ISO 17025 scope of accreditation.

Statements of conformity to specifications are based on the simple acceptance decision rule (JCGM 106:2012)

Received : 17 Jun 2024

Tested : 18 Jun 2024

Diagnosed : 18 Jun 2024 - Angela Borella

NORDEX USA - Chicago

300 SOUTH WACKER DRIVE, SUITE 1500

CHICAGO, IL

US 60606

Contact: DEVIN LINEHAN

DLinehan@nordex-online.com

T: (312)386-4124

F: (312)386-7102