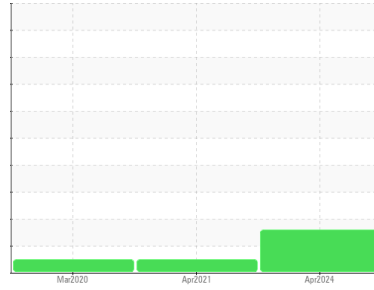




OIL ANALYSIS REPORT

Sample Rating Trend



WATER



Machine Id
TRANE CFCC L DAYCARE CH 1 CIRC 2 (S/N U16E05199)
 Component
Refrigeration Compressor
 Fluid
TRANE 0048 (2 GAL)

DIAGNOSIS

▲ Recommendation

No corrective action is recommended at this time. Resample at the next service interval to monitor.

Wear

All component wear rates are normal.

▲ Contamination

There is a trace of moisture present in the oil.

Fluid Condition

The AN level is acceptable for this fluid. The condition of the oil is suitable for further service.

SAMPLE INFORMATION

method	limit/base	current	history1	history2
Sample Number	Client Info	WC0801193	WC0459449	WCI2351844
Sample Date	Client Info	08 Apr 2024	05 Apr 2021	31 Mar 2020
Machine Age	hrs	Client Info	17865	0
Oil Age	hrs	Client Info	0	0
Oil Changed	Client Info	Not Chngd	N/A	Not Chngd
Sample Status		MARGINAL	NORMAL	NORMAL

WEAR METALS

method	limit/base	current	history1	history2
Iron	ppm	ASTM D5185m >8	<1	<1
Chromium	ppm	ASTM D5185m >2	0	0
Nickel	ppm	ASTM D5185m	0	0
Titanium	ppm	ASTM D5185m	<1	0
Silver	ppm	ASTM D5185m >2	0	<1
Aluminum	ppm	ASTM D5185m >3	0	0
Lead	ppm	ASTM D5185m >2	0	2
Copper	ppm	ASTM D5185m >8	<1	0
Tin	ppm	ASTM D5185m >4	<1	<1
Antimony	ppm	ASTM D5185m	---	<1
Vanadium	ppm	ASTM D5185m	<1	0
Cadmium	ppm	ASTM D5185m	0	0

ADDITIVES

method	limit/base	current	history1	history2
Boron	ppm	ASTM D5185m 1	0	2
Barium	ppm	ASTM D5185m 0	0	0
Molybdenum	ppm	ASTM D5185m 0	0	0
Manganese	ppm	ASTM D5185m 0	<1	0
Magnesium	ppm	ASTM D5185m 0	0	0
Calcium	ppm	ASTM D5185m 0	0	0
Phosphorus	ppm	ASTM D5185m 5	5	16
Zinc	ppm	ASTM D5185m 0	<1	0
Sulfur	ppm	ASTM D5185m 10	0	4

CONTAMINANTS

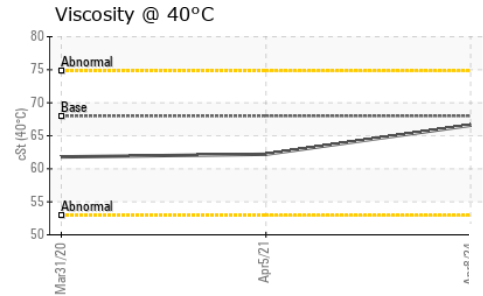
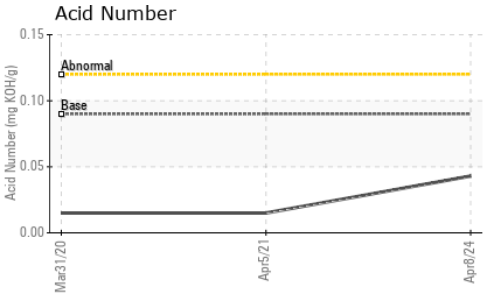
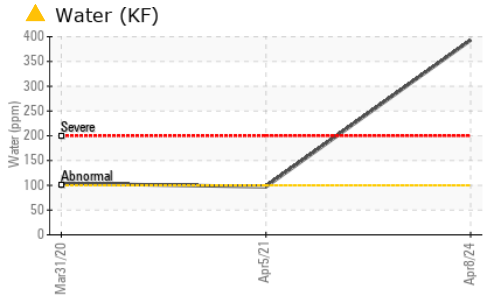
method	limit/base	current	history1	history2
Silicon	ppm	ASTM D5185m >15	2	3
Sodium	ppm	ASTM D5185m	<1	0
Potassium	ppm	ASTM D5185m >20	0	0
Water	%	ASTM D6304 >0.01	▲ 0.039	0.009
ppm Water	ppm	ASTM D6304 >100	▲ 393	97.0

FLUID DEGRADATION

method	limit/base	current	history1	history2
Acid Number (AN)	mg KOH/g	ASTM D974 0.09	0.043	0.015



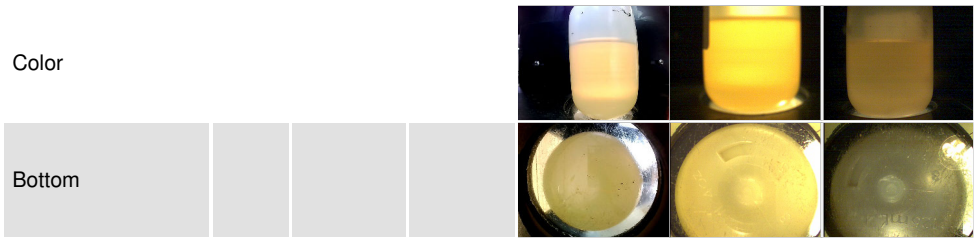
OIL ANALYSIS REPORT



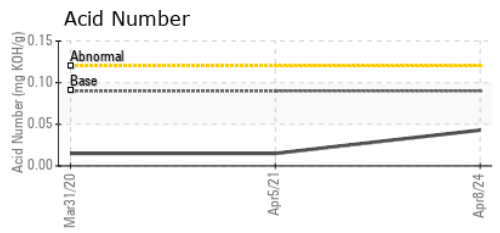
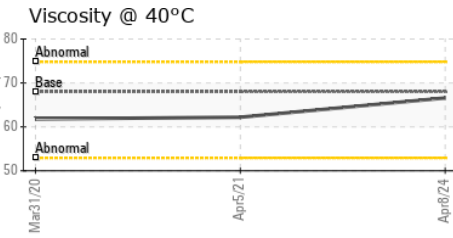
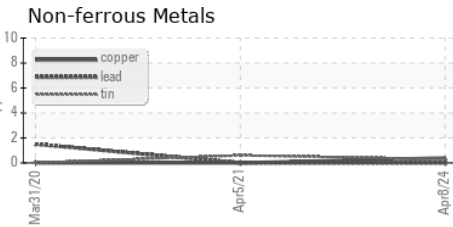
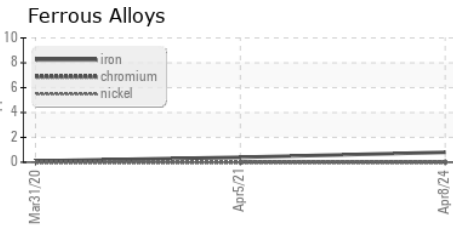
VISUAL	method	limit/base	current	history1	history2
White Metal	scalar	*Visual	NONE	NONE	NONE
Yellow Metal	scalar	*Visual	NONE	NONE	NONE
Precipitate	scalar	*Visual	NONE	NONE	NONE
Silt	scalar	*Visual	NONE	NONE	NONE
Debris	scalar	*Visual	NONE	NONE	NONE
Sand/Dirt	scalar	*Visual	NONE	NONE	NONE
Appearance	scalar	*Visual	NORML	NORML	NORML
Odor	scalar	*Visual	NORML	NORML	NORML
Emulsified Water	scalar	*Visual	>0.01	NEG	NEG
Free Water	scalar	*Visual		NEG	NEG

FLUID PROPERTIES	method	limit/base	current	history1	history2
Visc @ 40°C	cSt	ASTM D445 68	66.59	62.2	61.8

SAMPLE IMAGES	method	limit/base	current	history1	history2
---------------	--------	------------	---------	----------	----------



GRAPHS



Laboratory : WearCheck USA - 501 Madison Ave., Cary, NC 27513
Sample No. : WC0801193
Lab Number : **06211742**
Unique Number : 11084606
Test Package : IND 2
Received : 17 Jun 2024
Tested : 21 Jun 2024
Diagnosed : 21 Jun 2024 - Jonathan Hester

SCHNEIDER ELECTRIC
 PO DRAWER 185
 MORRISVILLE, NC
 US 27560
 Contact: ERICH WEBBER
 erich.webber@se.com
 T: (919)274-4145
 F: (919)467-7466

To discuss this sample report, contact Customer Service at 1-800-237-1369.

* - Denotes test methods that are outside of the ISO 17025 scope of accreditation.

Statements of conformity to specifications are based on the simple acceptance decision rule (JCGM 106:2012)