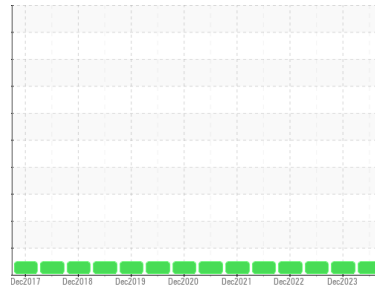




# OIL ANALYSIS REPORT

## Sample Rating Trend



**NORMAL**



Area

**[604317558 SR]**

Machine Id

**S. STRGE TNK - T2K01 (S/N 20076853)**

Component

**Gearbox**

Fluid

**GEAR OIL ISO 220 (--- GAL)**

### DIAGNOSIS

#### Recommendation

Resample at the next service interval to monitor.

#### Wear

All component wear rates are normal.

#### Contamination

There is no indication of any contamination in the oil.

#### Fluid Condition

The AN level is acceptable for this fluid. The condition of the oil is suitable for further service.

### SAMPLE INFORMATION

	method	limit/base	current	history1	history2
Sample Number	Client Info		<b>WC0854315</b>	WC0854133	WC0605471
Sample Date	Client Info		<b>16 Jun 2024</b>	01 Dec 2023	09 Jun 2023
Machine Age	mls	Client Info	<b>0</b>	0	0
Oil Age	mls	Client Info	<b>0</b>	0	0
Oil Changed	Client Info		<b>Not Changed</b>	Not Changed	Not Changed
Sample Status			<b>NORMAL</b>	NORMAL	NORMAL

### CONTAMINATION

	method	limit/base	current	history1	history2
Water	WC Method	>0.2	<b>NEG</b>	NEG	NEG

### WEAR METALS

	method	limit/base	current	history1	history2
Iron	ppm	ASTM D5185m >200	<b>17</b>	19	13
Chromium	ppm	ASTM D5185m >15	<b>0</b>	0	0
Nickel	ppm	ASTM D5185m >15	<b>0</b>	<1	0
Titanium	ppm	ASTM D5185m	<b>&lt;1</b>	0	0
Silver	ppm	ASTM D5185m	<b>0</b>	0	0
Aluminum	ppm	ASTM D5185m >25	<b>0</b>	<1	0
Lead	ppm	ASTM D5185m >100	<b>0</b>	0	0
Copper	ppm	ASTM D5185m >200	<b>2</b>	0	0
Tin	ppm	ASTM D5185m >25	<b>0</b>	0	<1
Vanadium	ppm	ASTM D5185m	<b>&lt;1</b>	0	0
Cadmium	ppm	ASTM D5185m	<b>0</b>	0	0

### ADDITIVES

	method	limit/base	current	history1	history2
Boron	ppm	ASTM D5185m 50	<b>0</b>	0	0
Barium	ppm	ASTM D5185m 15	<b>&lt;1</b>	2	0
Molybdenum	ppm	ASTM D5185m 15	<b>0</b>	0	0
Manganese	ppm	ASTM D5185m	<b>&lt;1</b>	<1	<1
Magnesium	ppm	ASTM D5185m 50	<b>&lt;1</b>	1	0
Calcium	ppm	ASTM D5185m 50	<b>4</b>	4	0
Phosphorus	ppm	ASTM D5185m 350	<b>717</b>	724	714
Zinc	ppm	ASTM D5185m 100	<b>7</b>	0	0
Sulfur	ppm	ASTM D5185m 12500	<b>1134</b>	819	1010

### CONTAMINANTS

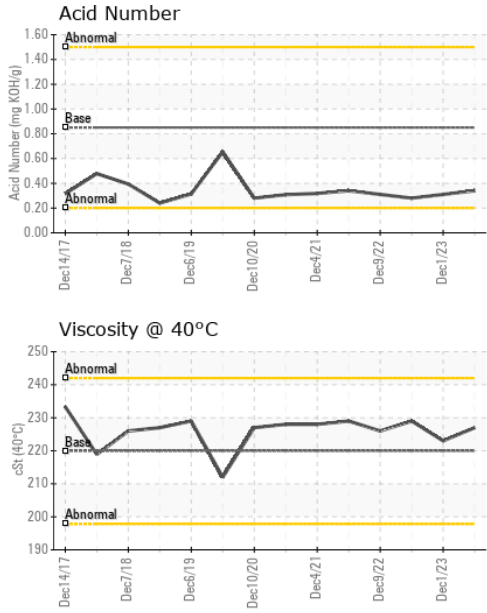
	method	limit/base	current	history1	history2
Silicon	ppm	ASTM D5185m >50	<b>29</b>	30	26
Sodium	ppm	ASTM D5185m	<b>1</b>	0	0
Potassium	ppm	ASTM D5185m >20	<b>0</b>	2	<1

### FLUID DEGRADATION

	method	limit/base	current	history1	history2
Acid Number (AN)	mg KOH/g	ASTM D8045 0.85	<b>0.34</b>	0.31	0.28



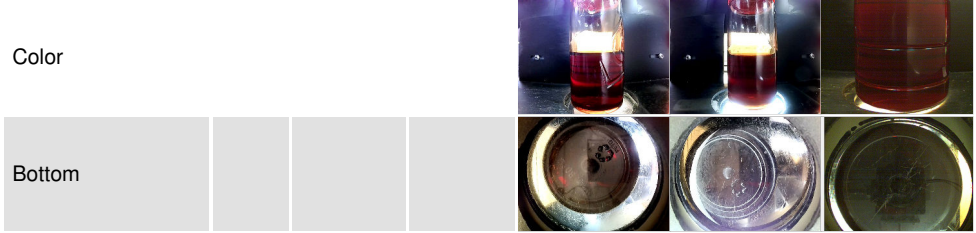
# OIL ANALYSIS REPORT



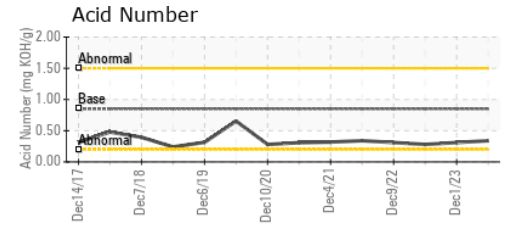
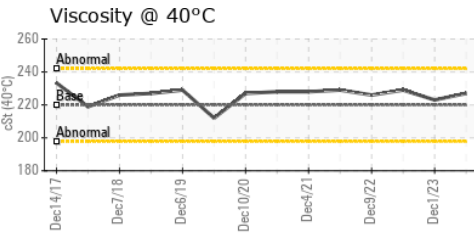
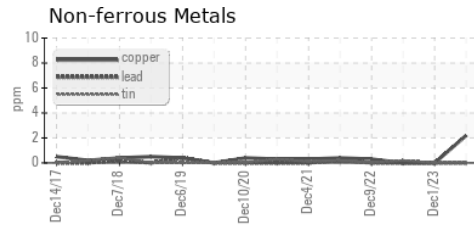
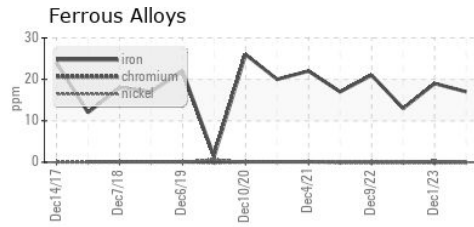
VISUAL	method	limit/base	current	history1	history2
White Metal	scalar	*Visual	NONE	NONE	NONE
Yellow Metal	scalar	*Visual	NONE	NONE	NONE
Precipitate	scalar	*Visual	NONE	NONE	NONE
Silt	scalar	*Visual	NONE	NONE	NONE
Debris	scalar	*Visual	NONE	NONE	NONE
Sand/Dirt	scalar	*Visual	NONE	NONE	NONE
Appearance	scalar	*Visual	NORML	NORML	NORML
Odor	scalar	*Visual	NORML	NORML	NORML
Emulsified Water	scalar	*Visual	>0.2	NEG	NEG
Free Water	scalar	*Visual		NEG	NEG

FLUID PROPERTIES	method	limit/base	current	history1	history2	
Visc @ 40°C	cSt	ASTM D445	220	<b>227</b>	223	229

SAMPLE IMAGES	method	limit/base	current	history1	history2
---------------	--------	------------	---------	----------	----------



## GRAPHS



**Laboratory** : WearCheck USA - 501 Madison Ave., Cary, NC 27513  
**Sample No.** : WC0854315      **Received** : 17 Jun 2024  
**Lab Number** : **06211860**      **Tested** : 18 Jun 2024  
**Unique Number** : 11084724      **Diagnosed** : 19 Jun 2024 - Don Baldrige  
**Test Package** : IND 2

**MARS CHOCOLATE**  
 2019 NORTH OAK PARK  
 CHICAGO, IL  
 US 60707  
 Contact: TONY FIORE  
 tony.fiore@effem.com  
 T: (773)745-2279  
 F:

To discuss this sample report, contact Customer Service at 1-800-237-1369.  
 \* - Denotes test methods that are outside of the ISO 17025 scope of accreditation.  
 Statements of conformity to specifications are based on the simple acceptance decision rule (JCGM 106:2012)