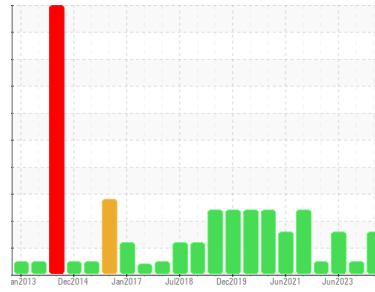




# OIL ANALYSIS REPORT

Sample Rating Trend



**WEAR**



Area

[604346601 SDR]

Machine Id

4 SLATE CONV SEC (S/N 20058868)

Component

Gearbox

Fluid

GEAR OIL ISO 680 (--- GAL)

## DIAGNOSIS

### Recommendation

The oil change at the time of sampling has been noted. No corrective action is recommended at this time. We recommend an early resample to monitor this condition.

### Wear

Bearing and/or bushing wear is indicated.

### Contamination

There is no indication of any contamination in the oil.

### Fluid Condition

The AN level is acceptable for this fluid. The condition of the oil is acceptable for the time in service.

## SAMPLE INFORMATION

	method	limit/base	current	history1	history2
Sample Number	Client Info		<b>WC0854533</b>	WC0854517	WC0605459
Sample Date	Client Info		<b>07 Jun 2024</b>	22 Dec 2023	16 Jun 2023
Machine Age	hrs	Client Info	<b>0</b>	0	0
Oil Age	hrs	Client Info	<b>0</b>	0	0
Oil Changed	Client Info		<b>Changed</b>	Changed	Not Changed
Sample Status			<b>ABNORMAL</b>	NORMAL	ABNORMAL

## CONTAMINATION

	method	limit/base	current	history1	history2
Water	WC Method	>0.2	<b>NEG</b>	NEG	NEG

## WEAR METALS

	method	limit/base	current	history1	history2
Iron	ppm	ASTM D5185m >200	<b>30</b>	1	32
Chromium	ppm	ASTM D5185m >15	<b>0</b>	0	<1
Nickel	ppm	ASTM D5185m >15	<b>9</b>	0	9
Titanium	ppm	ASTM D5185m	<b>0</b>	0	<1
Silver	ppm	ASTM D5185m	<b>&lt;1</b>	0	0
Aluminum	ppm	ASTM D5185m >25	<b>1</b>	0	4
Lead	ppm	ASTM D5185m >100	<b>&lt;1</b>	<1	1
Copper	ppm	ASTM D5185m >200	<b>▲ 354</b>	22	▲ 351
Tin	ppm	ASTM D5185m >25	<b>▲ 60</b>	4	▲ 55
Vanadium	ppm	ASTM D5185m	<b>0</b>	0	0
Cadmium	ppm	ASTM D5185m	<b>0</b>	0	0

## ADDITIVES

	method	limit/base	current	history1	history2
Boron	ppm	ASTM D5185m 50	<b>4</b>	0	4
Barium	ppm	ASTM D5185m 15	<b>0</b>	0	<1
Molybdenum	ppm	ASTM D5185m 15	<b>0</b>	0	0
Manganese	ppm	ASTM D5185m	<b>&lt;1</b>	0	<1
Magnesium	ppm	ASTM D5185m 50	<b>&lt;1</b>	<1	<1
Calcium	ppm	ASTM D5185m 50	<b>7</b>	26	6
Phosphorus	ppm	ASTM D5185m 350	<b>213</b>	197	205
Zinc	ppm	ASTM D5185m 100	<b>56</b>	0	74
Sulfur	ppm	ASTM D5185m 12500	<b>2534</b>	1400	2454

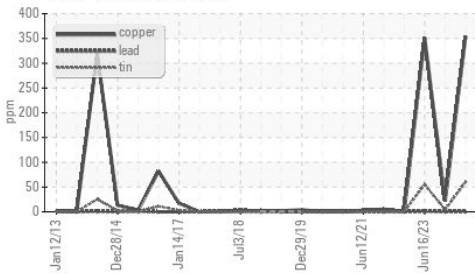
## CONTAMINANTS

	method	limit/base	current	history1	history2
Silicon	ppm	ASTM D5185m >50	<b>12</b>	3	18
Sodium	ppm	ASTM D5185m	<b>1</b>	0	0
Potassium	ppm	ASTM D5185m >20	<b>3</b>	3	<1

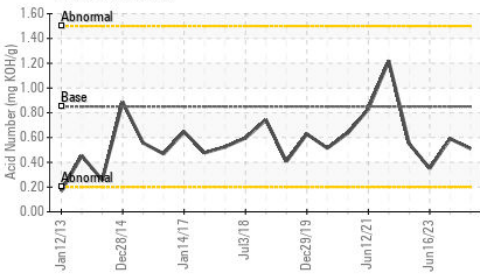
## FLUID DEGRADATION

	method	limit/base	current	history1	history2
Acid Number (AN)	mg KOH/g	ASTM D8045 0.85	<b>0.51</b>	0.59	0.35

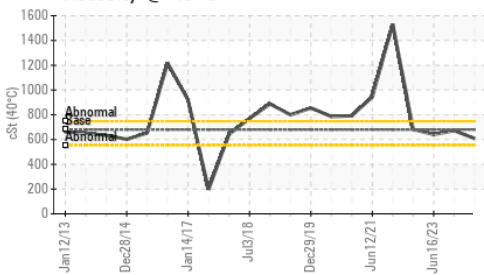
### Non-ferrous Metals



### Acid Number



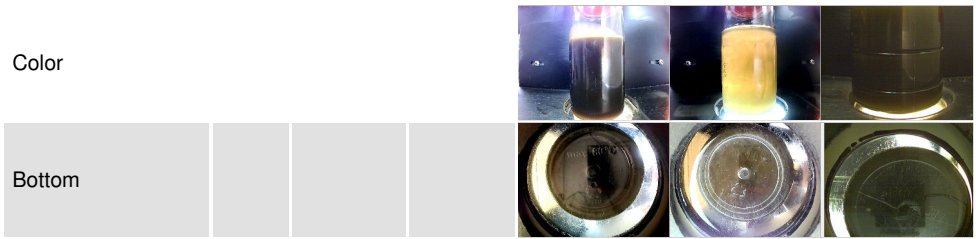
### Viscosity @ 40°C



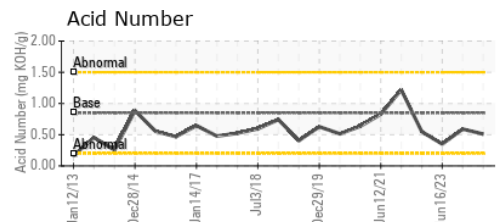
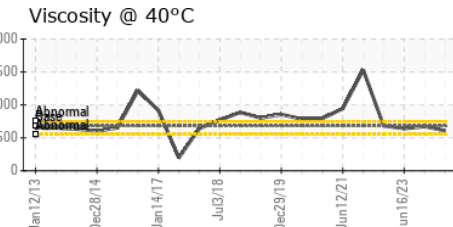
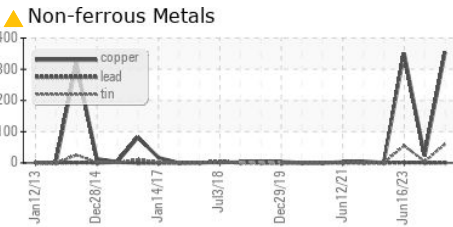
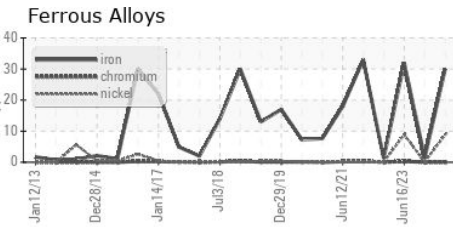
VISUAL	method	limit/base	current	history1	history2
White Metal	scalar	*Visual	NONE	NONE	NONE
Yellow Metal	scalar	*Visual	NONE	NONE	NONE
Precipitate	scalar	*Visual	NONE	NONE	NONE
Silt	scalar	*Visual	NONE	NONE	NONE
Debris	scalar	*Visual	NONE	NONE	NONE
Sand/Dirt	scalar	*Visual	NONE	NONE	NONE
Appearance	scalar	*Visual	NORML	NORML	NORML
Odor	scalar	*Visual	NORML	NORML	NORML
Emulsified Water	scalar	*Visual	>0.2	NEG	NEG
Free Water	scalar	*Visual		NEG	NEG

FLUID PROPERTIES	method	limit/base	current	history1	history2
Visc @ 40°C	cSt	ASTM D445 680	608	672	641

### SAMPLE IMAGES



### GRAPHS



**Laboratory** : WearCheck USA - 501 Madison Ave., Cary, NC 27513  
**Sample No.** : WC0854533 **Received** : 17 Jun 2024  
**Lab Number** : 06211891 **Tested** : 18 Jun 2024  
**Unique Number** : 11084755 **Diagnosed** : 19 Jun 2024 - Don Baldrige  
**Test Package** : IND 2

**MARS CHOCOLATE**  
 2019 NORTH OAK PARK  
 CHICAGO, IL  
 US 60707  
 Contact: TONY FIORE  
 tony.fiore@effem.com  
 T: (773)745-2279  
 F:

To discuss this sample report, contact Customer Service at 1-800-237-1369.  
 \* - Denotes test methods that are outside of the ISO 17025 scope of accreditation.  
 Statements of conformity to specifications are based on the simple acceptance decision rule (JCGM 106:2012)