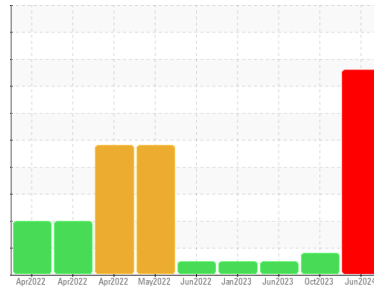




# PROBLEM SUMMARY

Machine Id  
**CR3312**  
 Component  
**Diesel Fuel**  
 Fluid  
**No.2 DIESEL FUEL (ULTRALOW SULPHUR) (--- GAL)**

Sample Rating Trend

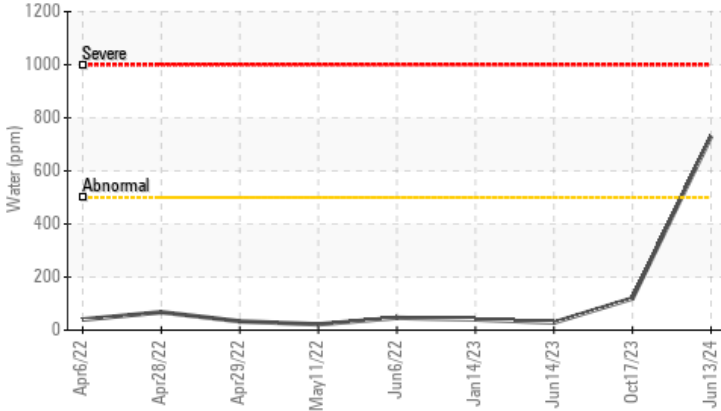


**WATER**



## COMPONENT CONDITION SUMMARY

▲ Water (KF)



## RECOMMENDATION

We advise that you follow the water drain-off procedure for this component. We recommend you service and check the fuel filters for mucous-like deposits. Check with fuel supplier for biocides available to destroy the microorganisms in the fuel system. We recommend an early resample to monitor this condition.

## PROBLEMATIC TEST RESULTS

Sample Status				SEVERE	ABNORMAL	NORMAL
Water	%	ASTM D6304	<0.05	▲ <b>0.072</b>	0.011	0.003
ppm Water	ppm	ASTM D6304	<500	▲ <b>730</b>	119.8	28.7

Customer Id: BUCGRA  
 Sample No.: WC0935910  
 Lab Number: 06213052  
 Test Package: CONST



To manage this report scan the QR code

To discuss the diagnosis or test data:  
 Doug Bogart +1 (800)237-1369 x4016  
[dougb@wearcheckusa.com](mailto:dougb@wearcheckusa.com)

To change component or sample information:  
 Customer Service +1 1-800-237-1369  
[customerservice@wearcheck.com](mailto:customerservice@wearcheck.com)

## RECOMMENDED ACTIONS

Action	Status	Date	Done By	Description
Change Filter	---	---	?	We recommend you service and check the fuel filters for mucous-like deposits. Check with fuel supplier for biocides available to destroy the microorganisms in the fuel system.
Water Drain-off	---	---	?	We advise that you follow the water drain-off procedure for this component.
Resample	---	---	?	We recommend an early resample to monitor this condition.
Contact Required	---	---	?	We recommend you service and check the fuel filters for mucous-like deposits. Check with fuel supplier for biocides available to destroy the microorganisms in the fuel system.

## HISTORICAL DIAGNOSIS

### SEDIMENT



#### 17 Oct 2023 Diag: Jonathan Hester

This is a baseline read-out on the submitted sample. We recommend you service the filters on this component. All metal levels are normal indicating no corrosion in the system. There is a moderate amount of visible silt present in the sample. The water content is negligible. The condition of the fuel is acceptable for the time in service.

[view report](#)



### NORMAL



#### 14 Jun 2023 Diag: Jonathan Hester

This is a baseline read-out on the submitted sample. No corrective action is recommended at this time. All metal levels are normal indicating no corrosion in the system. The water content is negligible. There is no indication of any contamination in the fuel. The condition of the fuel is acceptable for the time in service.

[view report](#)



### NORMAL



#### 14 Jan 2023 Diag: Doug Bogart

This is a baseline read-out on the submitted sample. All metal levels are normal indicating no corrosion in the system. The water content is negligible. There is no indication of any contamination in the fuel. The condition of the fuel is acceptable for the time in service.

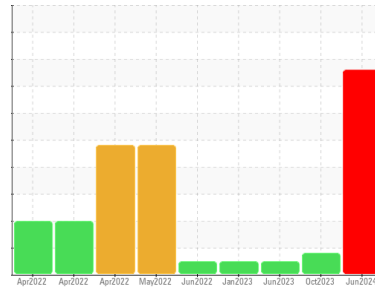
[view report](#)





# FUEL REPORT

## Sample Rating Trend



WATER



Machine Id  
**CR3312**

Component  
**Diesel Fuel**

Fluid  
**No.2 DIESEL FUEL (ULTRALOW SULPHUR) (--- GAL)**

### DIAGNOSIS

#### ▲ Recommendation

We advise that you follow the water drain-off procedure for this component. We recommend you service and check the fuel filters for mucous-like deposits. Check with fuel supplier for biocides available to destroy the microorganisms in the fuel system. We recommend an early resample to monitor this condition.

#### Corrosion

All metal levels are normal indicating no corrosion in the system.

#### ▲ Contaminants

Excessive free water present. There is a light concentration of suspended water present in the fuel. There is a high amount of visible silt and debris present in the sample. Possible bacteria or fungus (yeast and/or mold) indicated in the sample.

#### Fuel Condition

The fuel is no longer serviceable due to the presence of contaminants.

SAMPLE INFORMATION		method	limit/base	current	history1	history2
Sample Number	Client Info			<b>WC0935910</b>	WC0833266	WC0810370
Sample Date	Client Info			<b>13 Jun 2024</b>	17 Oct 2023	14 Jun 2023
Machine Age	hrs	Client Info		<b>11130</b>	9974	9364
Sample Status				<b>SEVERE</b>	ABNORMAL	NORMAL

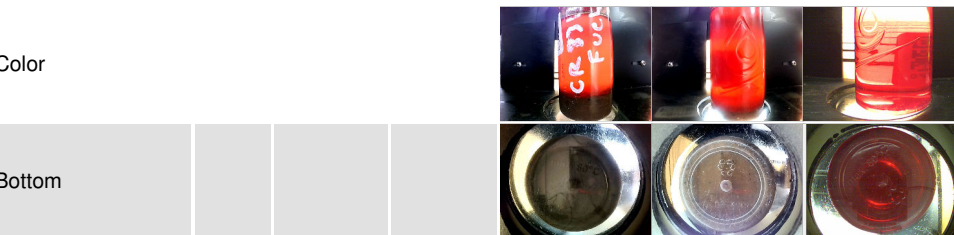
PHYSICAL PROPERTIES		method	limit/base	current	history1	history2
Visc @ 40°C	cSt	ASTM D445	3.0	<b>2.28</b>	2.57	2.69

SULFUR CONTENT		method	limit/base	current	history1	history2
Sulfur	ppm	ASTM D5185m	10	<b>0</b>	0	0

CONTAMINANTS		method	limit/base	current	history1	history2
Silicon	ppm	ASTM D5185m	<1.0	<b>&lt;1</b>	0	<1
Sodium	ppm	ASTM D5185m	<0.1	<b>2</b>	0	2
Potassium	ppm	ASTM D5185m	<0.1	<b>0</b>	2	0
Water	%	ASTM D6304	<0.05	<b>▲ 0.072</b>	0.011	0.003
ppm Water	ppm	ASTM D6304	<500	<b>▲ 730</b>	119.8	28.7

HEAVY METALS		method	limit/base	current	history1	history2
Aluminum	ppm	ASTM D5185m	<0.1	<b>0</b>	2	<1
Nickel	ppm	ASTM D5185m	<0.1	<b>0</b>	0	<1
Lead	ppm	ASTM D5185m	<0.1	<b>0</b>	<1	<1
Vanadium	ppm	ASTM D5185m	<0.1	<b>0</b>	0	<1
Iron	ppm	ASTM D5185m	<0.1	<b>0</b>	<1	<1
Calcium	ppm	ASTM D5185m	<0.1	<b>0</b>	0	<1
Magnesium	ppm	ASTM D5185m	<0.1	<b>0</b>	0	5
Phosphorus	ppm	ASTM D5185m	<0.1	<b>2</b>	1	0
Zinc	ppm	ASTM D5185m	<0.1	<b>&lt;1</b>	0	4

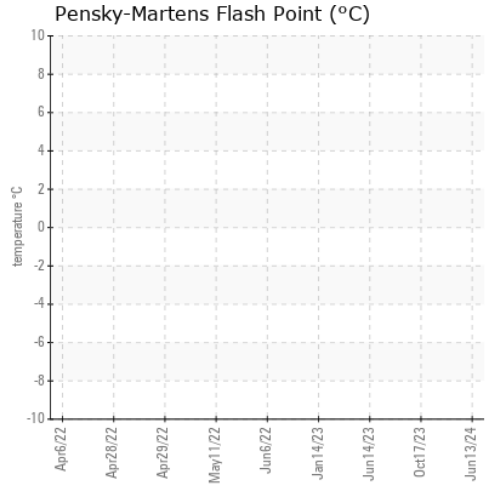
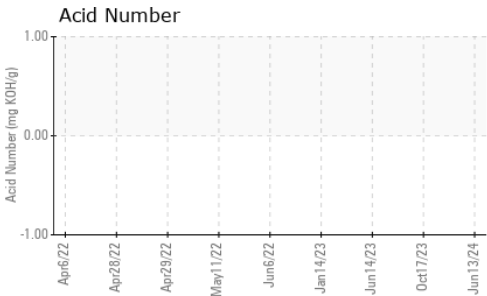
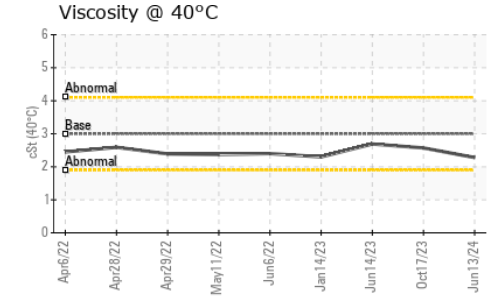
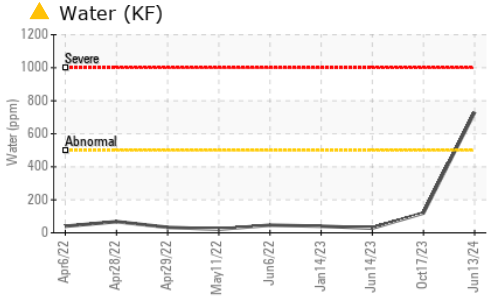
SAMPLE IMAGES		method	limit/base	current	history1	history2
---------------	--	--------	------------	---------	----------	----------





# FUEL REPORT

## GRAPHS



Certificate L2367

**Laboratory** : WearCheck USA - 501 Madison Ave., Cary, NC 27513  
**Sample No.** : WC0935910      **Received** : 17 Jun 2024  
**Lab Number** : 06213052      **Tested** : 21 Jun 2024  
**Unique Number** : 11085916      **Diagnosed** : 21 Jun 2024 - Doug Bogart  
**Test Package** : CONST ( Additional Tests: Bacteria, KF )  
 To discuss this sample report, contact Customer Service at 1-800-237-1369.  
 \* - Denotes test methods that are outside of the ISO 17025 scope of accreditation.  
 Statements of conformity to specifications are based on the simple acceptance decision rule (JCGM 106:2012)

**BUCKNER HEAVY LIFT**  
 4732 NC 54 EAST  
 GRAHAM, NC  
 US 27253-9215  
 Contact: MICHAEL LAWSON  
 michael@bucknercompanies.com  
 T: (336)376-8888  
 F: (336)376-4090