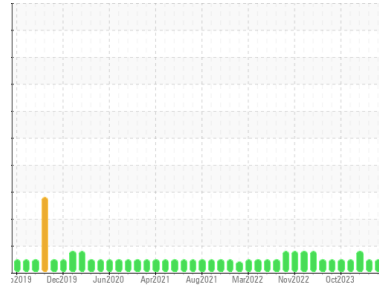




OIL ANALYSIS REPORT

Sample Rating Trend



NORMAL



Area

GFM
Machine Id

CHUCKHEAD A RESERVOIR

Component

Gearbox

Fluid

ROYAL PURPLE SYNERGY 140/680 (220 GAL)

DIAGNOSIS

Recommendation

Resample at the next service interval to monitor.

Wear

All component wear rates are normal.

Contamination

There is no indication of any contamination in the oil.

Fluid Condition

The AN level is acceptable for this fluid. The condition of the oil is suitable for further service.

SAMPLE INFORMATION

	method	limit/base	current	history1	history2
Sample Number	Client Info		WC0936976	WC0905605	WC0905626
Sample Date	Client Info		17 Jun 2024	09 Apr 2024	04 Mar 2024
Machine Age	hrs	Client Info	0	0	0
Oil Age	hrs	Client Info	0	0	0
Oil Changed	Client Info		N/A	N/A	N/A
Sample Status			NORMAL	NORMAL	ABNORMAL

CONTAMINATION

	method	limit/base	current	history1	history2
Water	WC Method	>0.2	NEG	NEG	NEG

WEAR METALS

	method	limit/base	current	history1	history2
Iron	ppm	ASTM D5185m >200	81	59	50
Chromium	ppm	ASTM D5185m >15	<1	1	<1
Nickel	ppm	ASTM D5185m >15	0	2	2
Titanium	ppm	ASTM D5185m	0	<1	<1
Silver	ppm	ASTM D5185m	0	0	0
Aluminum	ppm	ASTM D5185m >25	0	2	2
Lead	ppm	ASTM D5185m >100	0	1	0
Copper	ppm	ASTM D5185m >200	114	138	▲ 254
Tin	ppm	ASTM D5185m >25	3	7	12
Vanadium	ppm	ASTM D5185m	0	<1	0
Cadmium	ppm	ASTM D5185m	0	<1	0

ADDITIVES

	method	limit/base	current	history1	history2
Boron	ppm	ASTM D5185m	0	0	0
Barium	ppm	ASTM D5185m	0	0	0
Molybdenum	ppm	ASTM D5185m	0	<1	0
Manganese	ppm	ASTM D5185m	<1	1	0
Magnesium	ppm	ASTM D5185m	39	52	87
Calcium	ppm	ASTM D5185m 34	13	12	0
Phosphorus	ppm	ASTM D5185m 200	145	97	121
Zinc	ppm	ASTM D5185m	195	138	213
Sulfur	ppm	ASTM D5185m	18484	17378	24490

CONTAMINANTS

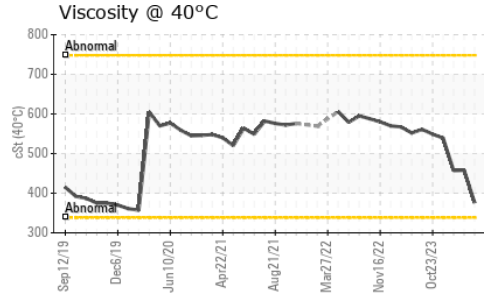
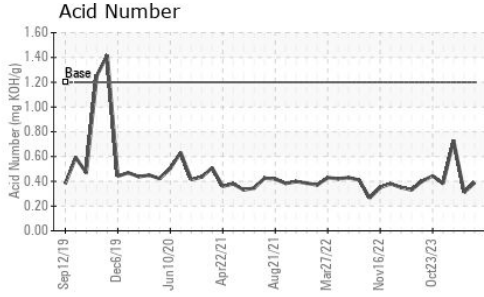
	method	limit/base	current	history1	history2
Silicon	ppm	ASTM D5185m >50	4	5	8
Sodium	ppm	ASTM D5185m	<1	<1	2
Potassium	ppm	ASTM D5185m >20	0	<1	<1

FLUID DEGRADATION

	method	limit/base	current	history1	history2
Acid Number (AN)	mg KOH/g	ASTM D8045 1.2	0.389	0.31	0.73



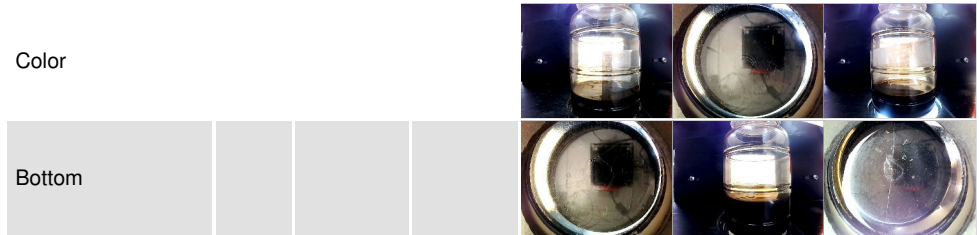
OIL ANALYSIS REPORT



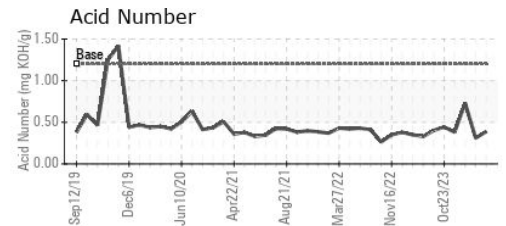
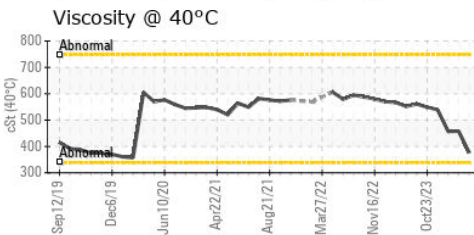
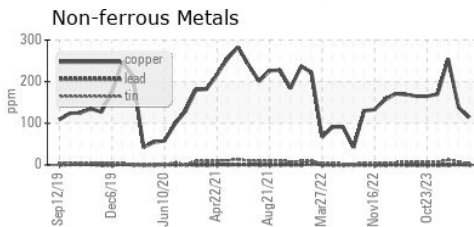
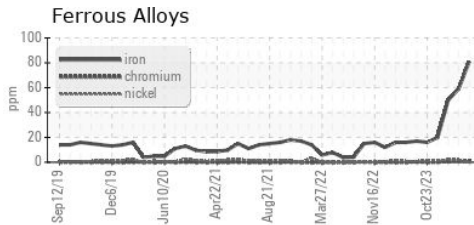
VISUAL	method	limit/base	current	history1	history2
White Metal	scalar	*Visual	NONE	NONE	NONE
Yellow Metal	scalar	*Visual	NONE	NONE	NONE
Precipitate	scalar	*Visual	NONE	NONE	NONE
Silt	scalar	*Visual	NONE	NONE	NONE
Debris	scalar	*Visual	NONE	NONE	NONE
Sand/Dirt	scalar	*Visual	NONE	NONE	NONE
Appearance	scalar	*Visual	NORML	NORML	NORML
Odor	scalar	*Visual	NORML	NORML	NORML
Emulsified Water	scalar	*Visual	>0.2	NEG	NEG
Free Water	scalar	*Visual		NEG	NEG

FLUID PROPERTIES	method	limit/base	current	history1	history2
Visc @ 40°C	cSt	ASTM D445	376	458	457

SAMPLE IMAGES	method	limit/base	current	history1	history2
---------------	--------	------------	---------	----------	----------



GRAPHS



Certificate L2367

Laboratory : WearCheck USA - 501 Madison Ave., Cary, NC 27513
Sample No. : WC0936976 **Received** : 18 Jun 2024
Lab Number : 06213619 **Tested** : 24 Jun 2024
Unique Number : 11086483 **Diagnosed** : 24 Jun 2024 - Jonathan Hester
Test Package : IND 2

ALLVAC SAF CONDITIONING
 3750 ALLOY WAY
 MONROE, NC
 US 28110
 Contact: MIKE TODD
 mike.todd@atimetals.com

To discuss this sample report, contact Customer Service at 1-800-237-1369.

* - Denotes test methods that are outside of the ISO 17025 scope of accreditation.

Statements of conformity to specifications are based on the simple acceptance decision rule (JCGM 106:2012)