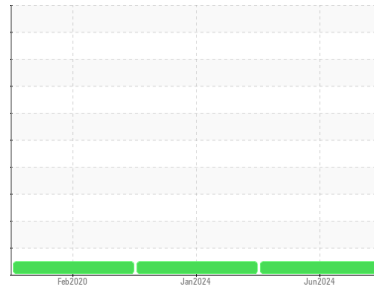




OIL ANALYSIS REPORT

Sample Rating Trend



NORMAL



Area

CSMI-B [S-25138]

Machine Id

ATLAS COPCO AIF096362 - SUNCALL

Component

Compressor

DIAGNOSIS

Recommendation

Resample at the next service interval to monitor.

Wear

All component wear rates are normal.

Contamination

There is no indication of any contamination in the oil.

Fluid Condition

The AN level is acceptable for this fluid. The condition of the oil is suitable for further service.

SAMPLE INFORMATION		method	limit/base	current	history1	history2
Sample Number	Client Info			UCH06214857	UCH06069616	UCH04916551
Sample Date	Client Info			10 Jun 2024	19 Jan 2024	14 Feb 2020
Machine Age	hrs	Client Info		66229	65503	58797
Oil Age	hrs	Client Info		0	0	0
Oil Changed	Client Info			Changed	N/A	Changed
Sample Status				NORMAL	NORMAL	NORMAL

CONTAMINATION		method	limit/base	current	history1	history2
Water	WC Method		>0.1	NEG	NEG	NEG

WEAR METALS		method	limit/base	current	history1	history2
Iron	ppm	ASTM D5185m	>50	0	3	2
Chromium	ppm	ASTM D5185m	>5	0	0	<1
Nickel	ppm	ASTM D5185m		0	0	0
Titanium	ppm	ASTM D5185m		0	0	0
Silver	ppm	ASTM D5185m		0	0	0
Aluminum	ppm	ASTM D5185m	>15	<1	<1	<1
Lead	ppm	ASTM D5185m	>65	0	0	0
Copper	ppm	ASTM D5185m	>65	0	<1	<1
Tin	ppm	ASTM D5185m	>10	<1	<1	0
Antimony	ppm	ASTM D5185m		---	---	0
Vanadium	ppm	ASTM D5185m		0	0	0
Cadmium	ppm	ASTM D5185m		0	0	0

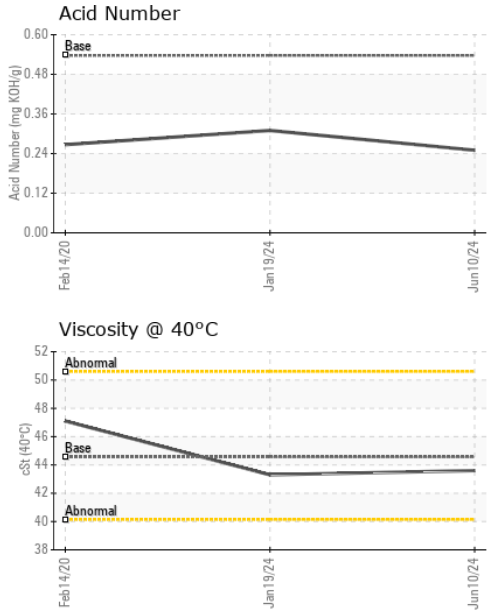
ADDITIVES		method	limit/base	current	history1	history2
Boron	ppm	ASTM D5185m	0.1	0	0	0
Barium	ppm	ASTM D5185m	0.8	0	0	0
Molybdenum	ppm	ASTM D5185m	0	0	0	0
Manganese	ppm	ASTM D5185m	0.9	<1	<1	<1
Magnesium	ppm	ASTM D5185m	0	0	<1	0
Calcium	ppm	ASTM D5185m	0	0	2	0
Phosphorus	ppm	ASTM D5185m	409	272	308	212
Zinc	ppm	ASTM D5185m	0	1	53	30
Sulfur	ppm	ASTM D5185m	1290	1059	957	223

CONTAMINANTS		method	limit/base	current	history1	history2
Silicon	ppm	ASTM D5185m	>35	1	2	1
Sodium	ppm	ASTM D5185m		<1	1	0
Potassium	ppm	ASTM D5185m	>20	1	<1	<1

FLUID DEGRADATION		method	limit/base	current	history1	history2
Acid Number (AN)	mg KOH/g	ASTM D8045	0.537	0.25	0.31	0.267



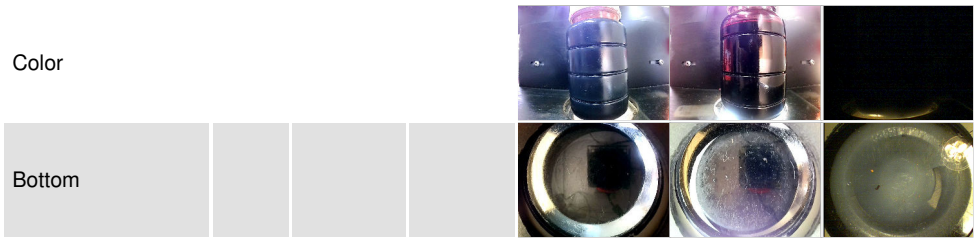
OIL ANALYSIS REPORT



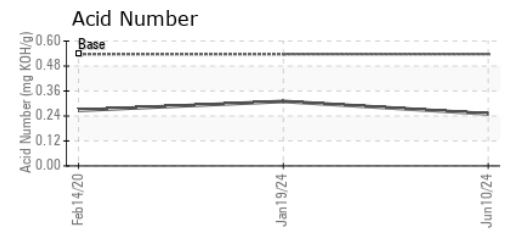
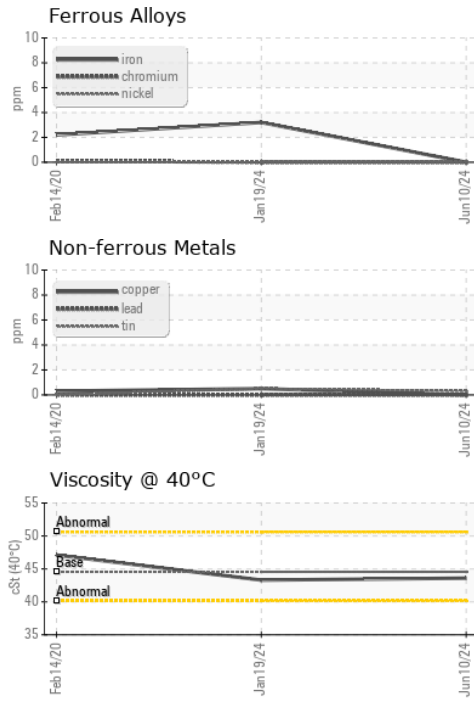
VISUAL	method	limit/base	current	history1	history2
White Metal	scalar	*Visual	NONE	NONE	NONE
Yellow Metal	scalar	*Visual	NONE	NONE	NONE
Precipitate	scalar	*Visual	NONE	NONE	NONE
Silt	scalar	*Visual	NONE	NONE	NONE
Debris	scalar	*Visual	NONE	NONE	NONE
Sand/Dirt	scalar	*Visual	NONE	NONE	NONE
Appearance	scalar	*Visual	NORML	NORML	NORML
Odor	scalar	*Visual	NORML	NORML	NORML
Emulsified Water	scalar	*Visual	>0.1	NEG	NEG
Free Water	scalar	*Visual		NEG	NEG

FLUID PROPERTIES	method	limit/base	current	history1	history2	
Visc @ 40°C	cSt	ASTM D445	44.56	43.6	43.3	47.1

SAMPLE IMAGES	method	limit/base	current	history1	history2
---------------	--------	------------	---------	----------	----------



GRAPHS



Laboratory : WearCheck USA - 501 Madison Ave., Cary, NC 27513
Sample No. : UCH06214857 **Received** : 19 Jun 2024
Lab Number : **06214857** **Tested** : 20 Jun 2024
Unique Number : 11087721 **Diagnosed** : 20 Jun 2024 - Wes Davis
Test Package : IND 2

CAPITAL MACHINERY SYSTEMS
 3207 W ANGLE ROAD
 PENDELTON, IN
 US 46064
 Contact: BRIAN CALDWELL
 bcaldwell@capital-compressor.com

To discuss this sample report, contact Customer Service at 1-800-237-1369.
 * - Denotes test methods that are outside of the ISO 17025 scope of accreditation.
 Statements of conformity to specifications are based on the simple acceptance decision rule (JCGM 106:2012) F: (765)788-0919