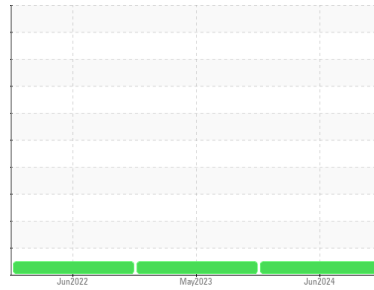




FUEL REPORT

Sample Rating Trend



NORMAL



Machine Id
AUTUMN CARE

Component
Diesel Fuel

Fluid
No.2 DIESEL FUEL (LOW-SULPHUR) (--- LTR)

DIAGNOSIS

Recommendation

All laboratory tests indicate that this sample meets specifications for No.2 low-sulfur diesel fuel.

Corrosion

All metal levels are normal indicating no corrosion in the system.

Contaminants

The water content is negligible. There is no bacteria or fungus (yeast and/or mold) indicated in the sample. There is no indication of any contamination in the fuel. The amount and size of particulates present in the system are acceptable.

Fuel Condition

Sulfur value derived by ASTM D5453 method for ULSD validation.

SAMPLE INFORMATION		method	limit/base	current	history1	history2
Sample Number	Client Info			WC0851330	WC0814512	WC0591325
Sample Date	Client Info			11 Jun 2024	19 May 2023	09 Jun 2022
Machine Age	mls	Client Info		0	0	0
Sample Status				NORMAL	NORMAL	NORMAL

PHYSICAL PROPERTIES		method	limit/base	current	history1	history2
ASTM Color	scalar	*ASTM D1500		L5.5	4.5	L6.0
Visc @ 40°C	cSt	ASTM D445	3.0	2.4	2.41	2.44

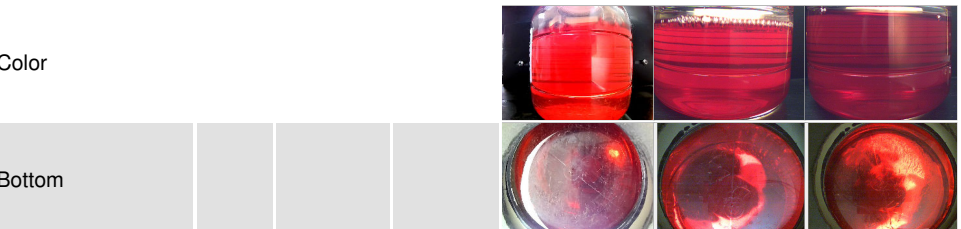
SULFUR CONTENT		method	limit/base	current	history1	history2
Sulfur	ppm	ASTM D5185m	250	484	453	502
Sulfur (UVF)	ppm	ASTM D5453		394	378	452

CONTAMINANTS		method	limit/base	current	history1	history2
Silicon	ppm	ASTM D5185m	<1.0	<1	0	0
Sodium	ppm	ASTM D5185m	<0.1	2	0	0
Potassium	ppm	ASTM D5185m	<0.1	2	<1	<1
Water	%	ASTM D6304	<0.05	0.003	0.005	0.003
ppm Water	ppm	ASTM D6304	<500	31	56.4	33.5
% Gasoline	%	*In-House	<0.50	0.0	0.0	0.0
% Biodiesel	%	*In-House	<20.0	0.0	0.0	0.0

FLUID CLEANLINESS		method	limit/base	current	history1	history2
Particles >4µm		ASTM D7647	>2500	1252	15636	64632
Particles >6µm		ASTM D7647	>640	464	3950	19323
Particles >14µm		ASTM D7647	>80	63	290	1559
Particles >21µm		ASTM D7647	>20	21	67	261
Particles >38µm		ASTM D7647	>4	2	2	11
Particles >71µm		ASTM D7647	>3	0	0	0
Oil Cleanliness		ISO 4406 (c)	>18/16/13	17/16/13	21/19/15	23/21/18

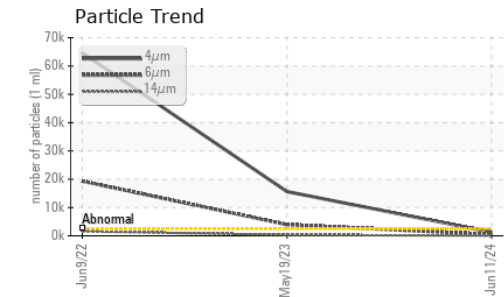
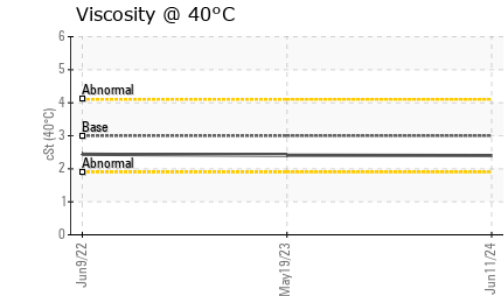
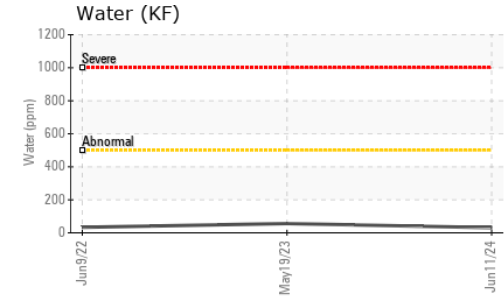
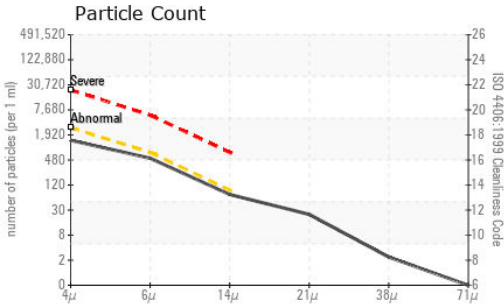
HEAVY METALS		method	limit/base	current	history1	history2
Aluminum	ppm	ASTM D5185m	<0.1	0	0	<1
Nickel	ppm	ASTM D5185m	<0.1	0	<1	0
Lead	ppm	ASTM D5185m	<0.1	0	0	<1
Vanadium	ppm	ASTM D5185m	<0.1	0	0	0
Iron	ppm	ASTM D5185m	<0.1	0	0	<1
Calcium	ppm	ASTM D5185m	<0.1	0	<1	0
Magnesium	ppm	ASTM D5185m	<0.1	0	0	0
Phosphorus	ppm	ASTM D5185m	<0.1	0	<1	1
Zinc	ppm	ASTM D5185m	<0.1	3	0	0

SAMPLE IMAGES		method	limit/base	current	history1	history2
---------------	--	--------	------------	---------	----------	----------

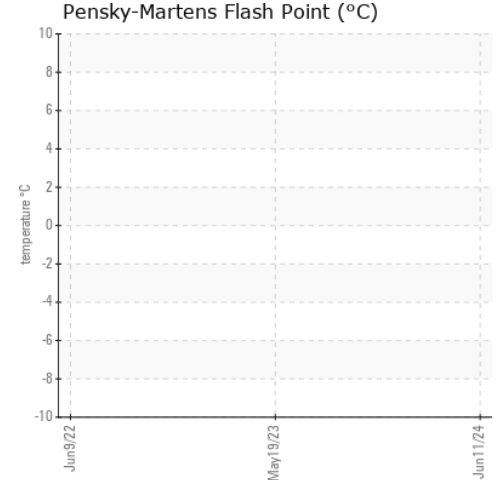




FUEL REPORT



GRAPHS



Certificate L2367

To discuss this sample report, contact Customer Service at 1-800-237-1369.

* - Denotes test methods that are outside of the ISO 17025 scope of accreditation.

Statements of conformity to specifications are based on the simple acceptance decision rule (JCGM 106:2012)

Laboratory : WearCheck USA - 501 Madison Ave., Cary, NC 27513

Sample No. : WC0851330

Lab Number : 06216246

Unique Number : 11089110

Test Package : DF-5 (Additional Tests: Screen)

Received : 20 Jun 2024

Tested : 24 Jun 2024

Diagnosed : 24 Jun 2024 - Doug Bogart

STARTEK ELECTRIC

20407 GREAT SMOKEY MOUNTAIN EXPRESS

WAYNESVILLE, NC

US 28786

Contact: TRACEY RICH

traceyrich18@yahoo.com

T: (828)456-3386

F: