



OIL ANALYSIS REPORT

Sample Rating Trend



ISO

Machine Id

SIERRA 71SSLX 27322

Component

Hydraulic System

Fluid

SUNOCO SUNVIS 846 ISO 46 (660 GAL)

DIAGNOSIS

Recommendation

No corrective action is recommended at this time. Resample at the next service interval to monitor.

Wear

All component wear rates are normal.

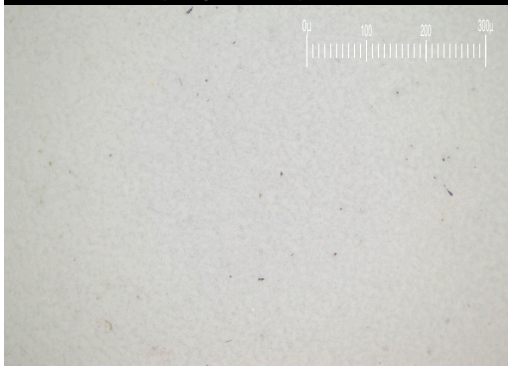
Contamination

There is a high amount of silt (particulates < 14 microns in size) present in the oil.

Fluid Condition

The AN level is acceptable for this fluid. The condition of the oil is suitable for further service.

Particle Filter (Magn: 200 x)



SAMPLE INFORMATION		method	limit/base	current	history1	history2
Sample Number	Client Info			PH0002350	---	---
Sample Date	Client Info			17 Jun 2024	---	---
Machine Age	hrs	Client Info		5586	---	---
Oil Age	hrs	Client Info		5586	---	---
Oil Changed	Client Info			Not Changed	---	---
Sample Status				ABNORMAL	---	---

CONTAMINATION		method	limit/base	current	history1	history2
Water	WC Method		>0.05	NEG	---	---

WEAR METALS		method	limit/base	current	history1	history2
Iron	ppm	ASTM D5185m	>20	<1	---	---
Chromium	ppm	ASTM D5185m	>20	2	---	---
Nickel	ppm	ASTM D5185m	>20	0	---	---
Titanium	ppm	ASTM D5185m		0	---	---
Silver	ppm	ASTM D5185m		0	---	---
Aluminum	ppm	ASTM D5185m	>20	0	---	---
Lead	ppm	ASTM D5185m	>20	0	---	---
Copper	ppm	ASTM D5185m	>20	18	---	---
Tin	ppm	ASTM D5185m	>20	1	---	---
Vanadium	ppm	ASTM D5185m		0	---	---
Cadmium	ppm	ASTM D5185m		0	---	---

ADDITIVES		method	limit/base	current	history1	history2
Boron	ppm	ASTM D5185m		0	---	---
Barium	ppm	ASTM D5185m		0	---	---
Molybdenum	ppm	ASTM D5185m		0	---	---
Manganese	ppm	ASTM D5185m		<1	---	---
Magnesium	ppm	ASTM D5185m		3	---	---
Calcium	ppm	ASTM D5185m		71	---	---
Phosphorus	ppm	ASTM D5185m		366	---	---
Zinc	ppm	ASTM D5185m		462	---	---
Sulfur	ppm	ASTM D5185m		4158	---	---

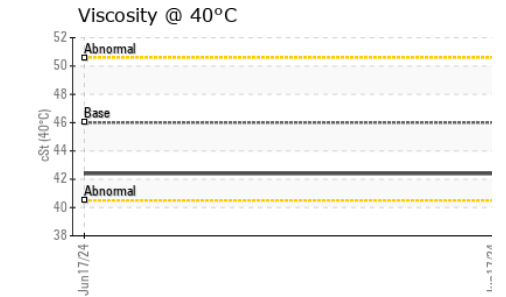
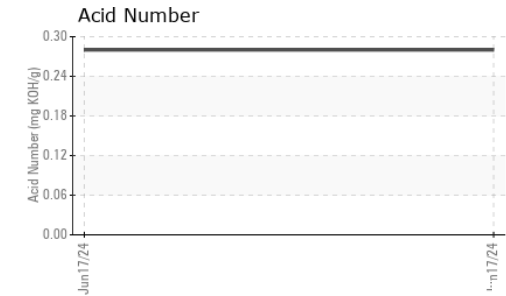
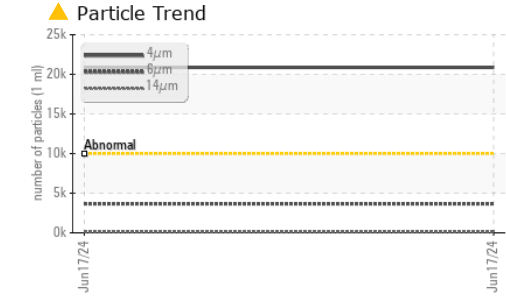
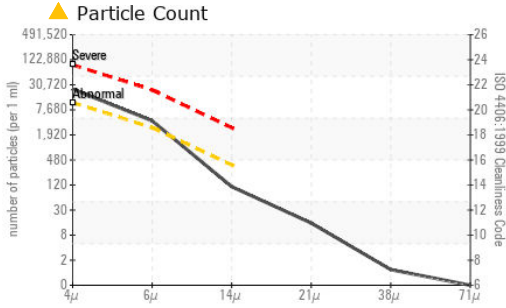
CONTAMINANTS		method	limit/base	current	history1	history2
Silicon	ppm	ASTM D5185m	>15	2	---	---
Sodium	ppm	ASTM D5185m		2	---	---
Potassium	ppm	ASTM D5185m	>20	3	---	---

FLUID CLEANLINESS		method	limit/base	current	history1	history2
Particles >4µm	ASTM D7647	>10000	▲ 20872	---	---	
Particles >6µm	ASTM D7647	>2500	● 3663	---	---	
Particles >14µm	ASTM D7647	>320	97	---	---	
Particles >21µm	ASTM D7647	>80	13	---	---	
Particles >38µm	ASTM D7647	>20	1	---	---	
Particles >71µm	ASTM D7647	>4	0	---	---	
Oil Cleanliness	ISO 4406 (c)	>20/18/15	▲ 22/19/14	---	---	

FLUID DEGRADATION		method	limit/base	current	history1	history2
Acid Number (AN)	mg KOH/g	ASTM D8045		0.28	---	---



OIL ANALYSIS REPORT

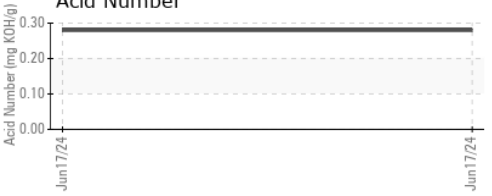
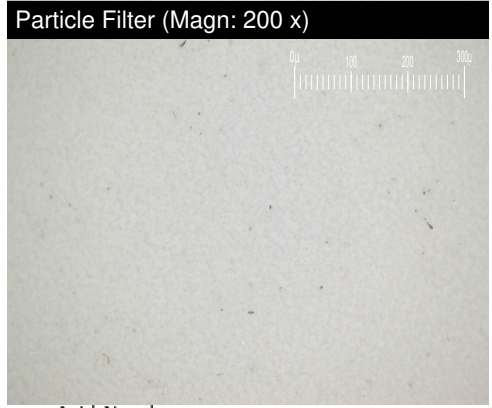
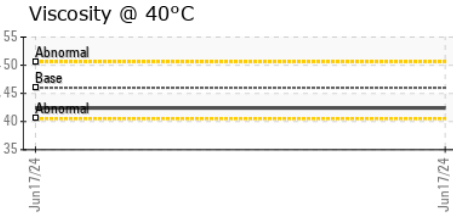
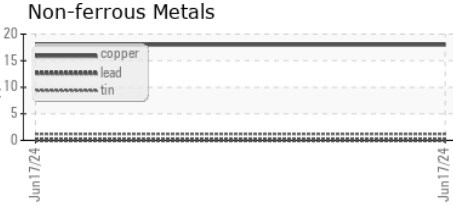
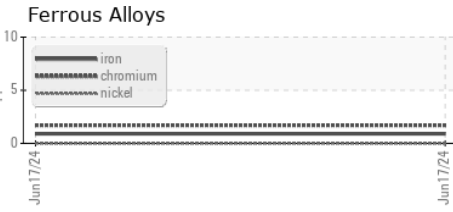


VISUAL	method	limit/base	current	history1	history2	
White Metal	scalar	*Visual	NONE	NONE	---	---
Yellow Metal	scalar	*Visual	NONE	NONE	---	---
Precipitate	scalar	*Visual	NONE	NONE	---	---
Silt	scalar	*Visual	NONE	NONE	---	---
Debris	scalar	*Visual	NONE	NONE	---	---
Sand/Dirt	scalar	*Visual	NONE	NONE	---	---
Appearance	scalar	*Visual	NORML	NORML	---	---
Odor	scalar	*Visual	NORML	NORML	---	---
Emulsified Water	scalar	*Visual	>0.05	NEG	---	---
Free Water	scalar	*Visual		NEG	---	---

FLUID PROPERTIES	method	limit/base	current	history1	history2	
Visc @ 40°C	cSt	ASTM D445	46.0	42.4	---	---

SAMPLE IMAGES	method	limit/base	current	history1	history2	
Color					no image	no image
Bottom					no image	no image
PrtFilter					no image	no image

GRAPHS



Laboratory : WearCheck USA - 501 Madison Ave., Cary, NC 27513
Sample No. : PH0002350 **Received** : 20 Jun 2024
Lab Number : 06216294 **Tested** : 24 Jun 2024
Unique Number : 11089158 **Diagnosed** : 24 Jun 2024 - Jonathan Hester
Test Package : PLANT (Additional Tests: PrtFilter)

NJC SCRAP METAL
 34 MOFFITT BLVD
 BAY SHORE, NY
 US 11706
 Contact: Service Manager

To discuss this sample report, contact Customer Service at 1-800-237-1369.

* - Denotes test methods that are outside of the ISO 17025 scope of accreditation.
 Statements of conformity to specifications are based on the simple acceptance decision rule (JCGM 106:2012)

T:
F: