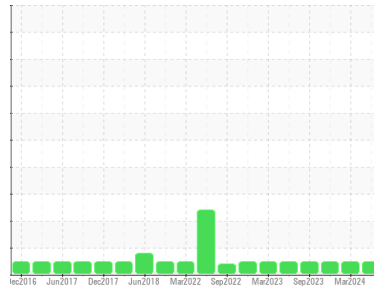




# OIL ANALYSIS REPORT

Sample Rating Trend



**NORMAL**



Area  
**CLARK AMERICA**  
 Machine Id  
**1 - MAIN PLANT**  
 Component  
**Compressor**  
 Fluid  
**{not provided} (--- GAL)**

## DIAGNOSIS

**Recommendation**  
 Resample at the next service interval to monitor.

**Wear**  
 All component wear rates are normal.

**Contamination**  
 There is no indication of any contamination in the oil. The amount and size of particulates present in the system are acceptable.

**Fluid Condition**  
 The AN level is acceptable for this fluid. The condition of the oil is suitable for further service.

## SAMPLE INFORMATION

method	limit/base	current	history1	history2
Sample Number	Client Info	<b>WC0929579</b>	WC0877725	WC0846213
Sample Date	Client Info	<b>19 Jun 2024</b>	07 Mar 2024	21 Dec 2023
Machine Age	hrs	<b>0</b>	0	0
Oil Age	hrs	<b>0</b>	0	0
Oil Changed	Client Info	<b>Not Changed</b>	Not Changed	Not Changed
Sample Status		<b>NORMAL</b>	NORMAL	NORMAL

## CONTAMINATION

method	limit/base	current	history1	history2
Water	WC Method >0.1	<b>NEG</b>	NEG	NEG

## WEAR METALS

method	limit/base	current	history1	history2
Iron	ppm ASTM D5185m >50	<b>&lt;1</b>	0	0
Chromium	ppm ASTM D5185m >10	<b>&lt;1</b>	<1	0
Nickel	ppm ASTM D5185m	<b>&lt;1</b>	0	0
Titanium	ppm ASTM D5185m	<b>&lt;1</b>	0	<1
Silver	ppm ASTM D5185m	<b>&lt;1</b>	0	0
Aluminum	ppm ASTM D5185m >25	<b>3</b>	2	0
Lead	ppm ASTM D5185m >25	<b>&lt;1</b>	0	0
Copper	ppm ASTM D5185m >50	<b>&lt;1</b>	0	<1
Tin	ppm ASTM D5185m >15	<b>&lt;1</b>	0	<1
Vanadium	ppm ASTM D5185m	<b>&lt;1</b>	0	0
Cadmium	ppm ASTM D5185m	<b>&lt;1</b>	0	0

## ADDITIVES

method	limit/base	current	history1	history2
Boron	ppm ASTM D5185m	<b>0</b>	0	0
Barium	ppm ASTM D5185m	<b>&lt;1</b>	0	0
Molybdenum	ppm ASTM D5185m	<b>&lt;1</b>	0	0
Manganese	ppm ASTM D5185m	<b>&lt;1</b>	0	<1
Magnesium	ppm ASTM D5185m	<b>0</b>	<1	0
Calcium	ppm ASTM D5185m	<b>0</b>	4	0
Phosphorus	ppm ASTM D5185m	<b>317</b>	275	260
Zinc	ppm ASTM D5185m	<b>15</b>	6	0
Sulfur	ppm ASTM D5185m	<b>24</b>	0	0

## CONTAMINANTS

method	limit/base	current	history1	history2
Silicon	ppm ASTM D5185m >25	<b>8</b>	6	5
Sodium	ppm ASTM D5185m	<b>0</b>	<1	2
Potassium	ppm ASTM D5185m >20	<b>2</b>	<1	0

## FLUID CLEANLINESS

method	limit/base	current	history1	history2
Particles >4µm	ASTM D7647 >10000	<b>1460</b>	1127	3582
Particles >6µm	ASTM D7647 >2500	<b>432</b>	133	841
Particles >14µm	ASTM D7647 >320	<b>35</b>	6	69
Particles >21µm	ASTM D7647 >80	<b>8</b>	2	27
Particles >38µm	ASTM D7647 >20	<b>0</b>	0	4
Particles >71µm	ASTM D7647 >4	<b>0</b>	0	1
Oil Cleanliness	ISO 4406 (c) >20/18/15	<b>18/16/12</b>	17/14/10	19/17/13

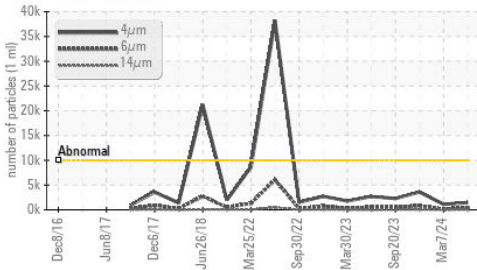
## FLUID DEGRADATION

method	limit/base	current	history1	history2
Acid Number (AN)	mg KOH/g ASTM D8045	<b>0.37</b>	0.35	0.29

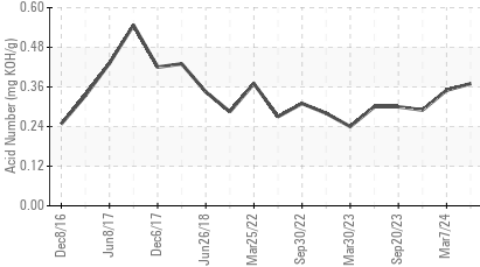


# OIL ANALYSIS REPORT

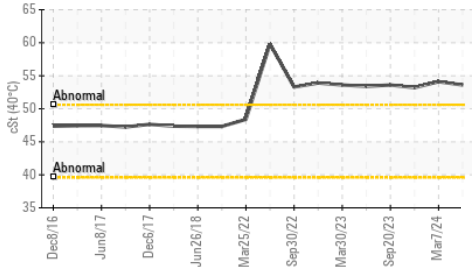
Particle Trend



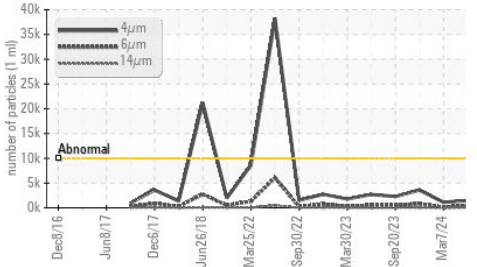
Acid Number



Viscosity @ 40°C



Particle Trend

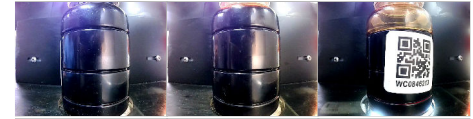


VISUAL	method	limit/base	current	history1	history2
White Metal	scalar	*Visual	NONE	NONE	NONE
Yellow Metal	scalar	*Visual	NONE	NONE	NONE
Precipitate	scalar	*Visual	NONE	NONE	NONE
Silt	scalar	*Visual	NONE	NONE	NONE
Debris	scalar	*Visual	NONE	NONE	LIGHT
Sand/Dirt	scalar	*Visual	NONE	NONE	NONE
Appearance	scalar	*Visual	NORML	NORML	NORML
Odor	scalar	*Visual	NORML	NORML	NORML
Emulsified Water	scalar	*Visual	>0.1	NEG	NEG
Free Water	scalar	*Visual		NEG	NEG

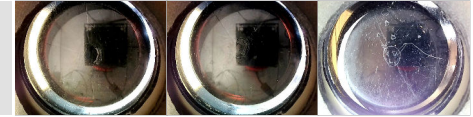
FLUID PROPERTIES	method	limit/base	current	history1	history2
Visc @ 40°C	cSt	ASTM D445	53.6	54.1	53.2

SAMPLE IMAGES	method	limit/base	current	history1	history2
---------------	--------	------------	---------	----------	----------

Color

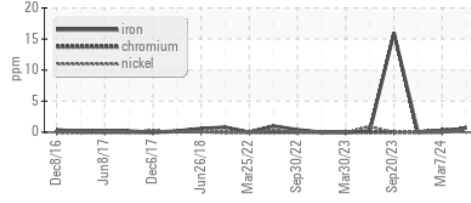


Bottom

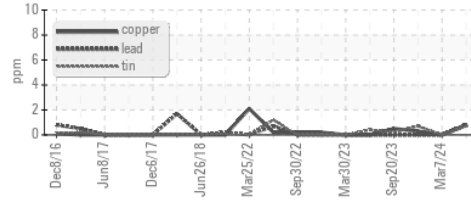


## GRAPHS

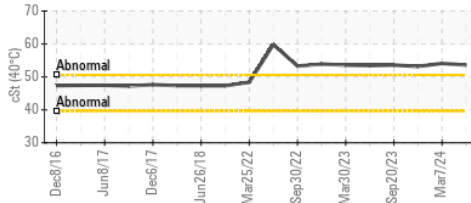
Ferrous Alloys



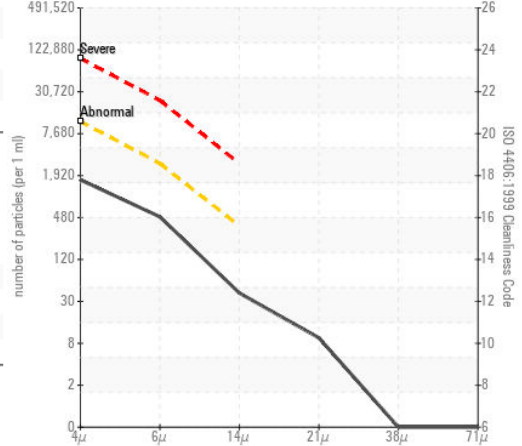
Non-ferrous Metals



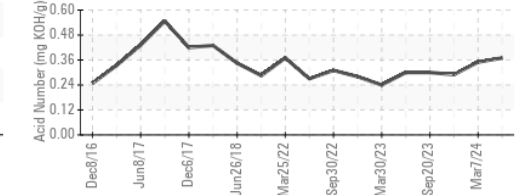
Viscosity @ 40°C



Particle Count



Acid Number



Certificate L2367

Laboratory : WearCheck USA - 501 Madison Ave., Cary, NC 27513

Sample No. : WC0929579

Lab Number : 06216814

Unique Number : 11089678

Test Package : IND 2 ( Additional Tests: PrtCount )

To discuss this sample report, contact Customer Service at 1-800-237-1369.

\* - Denotes test methods that are outside of the ISO 17025 scope of accreditation.

Statements of conformity to specifications are based on the simple acceptance decision rule (JCGM 106:2012)

Received : 21 Jun 2024

Tested : 24 Jun 2024

Diagnosed : 24 Jun 2024 - Don Baldrige

MOTOR TECHNOLOGY INC

515 WILLOW SPRINGS LN

YORK, PA

US 17406

Contact: Bill Trimmer

btrimmer@motortechinc.com

T: (717)266-4045

F: