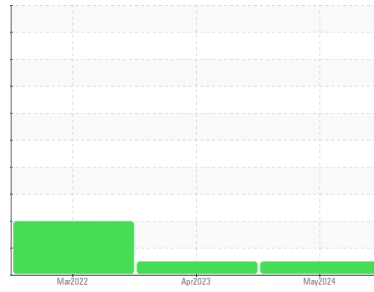




# OIL ANALYSIS REPORT

## Sample Rating Trend



**NORMAL**



Machine Id  
**KAESER 7285506**  
 Component  
**Compressor**  
 Fluid  
**KAESER SIGMA (OEM) M-460 (--- QTS)**

### DIAGNOSIS

#### Recommendation

Resample at the next service interval to monitor.

#### Wear

All component wear rates are normal.

#### Contamination

The amount and size of particulates present in the system are acceptable. There is no indication of any contamination in the oil.

#### Fluid Condition

The AN level is acceptable for this fluid. The condition of the oil is suitable for further service.

SAMPLE INFORMATION		method	limit/base	current	history1	history2
Sample Number	Client Info			<b>KCPA014494</b>	KCP52740	KCP41027
Sample Date	Client Info			<b>29 May 2024</b>	05 Apr 2023	23 Mar 2022
Machine Age	hrs	Client Info		<b>2402</b>	1778	1130
Oil Age	hrs	Client Info		<b>0</b>	400	600
Oil Changed	Client Info			<b>Not Changed</b>	Changed	Changed
Sample Status				<b>NORMAL</b>	NORMAL	ABNORMAL

WEAR METALS		method	limit/base	current	history1	history2
Iron	ppm	ASTM D5185m	>50	<b>&lt;1</b>	0	<1
Chromium	ppm	ASTM D5185m	>10	<b>&lt;1</b>	0	0
Nickel	ppm	ASTM D5185m	>3	<b>&lt;1</b>	0	0
Titanium	ppm	ASTM D5185m	>3	<b>&lt;1</b>	0	0
Silver	ppm	ASTM D5185m	>2	<b>&lt;1</b>	0	0
Aluminum	ppm	ASTM D5185m	>10	<b>3</b>	<1	<1
Lead	ppm	ASTM D5185m	>10	<b>&lt;1</b>	0	0
Copper	ppm	ASTM D5185m	>50	<b>1</b>	0	<1
Tin	ppm	ASTM D5185m	>10	<b>&lt;1</b>	0	0
Vanadium	ppm	ASTM D5185m		<b>&lt;1</b>	0	0
Cadmium	ppm	ASTM D5185m		<b>&lt;1</b>	0	0

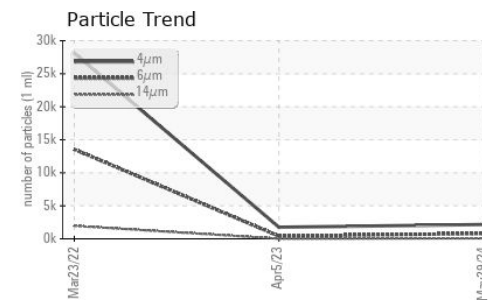
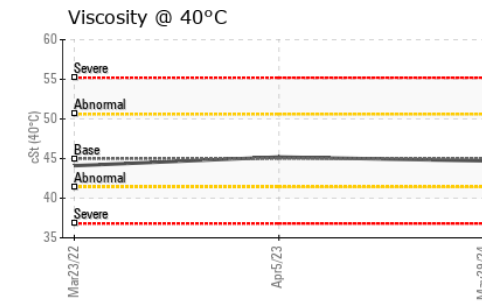
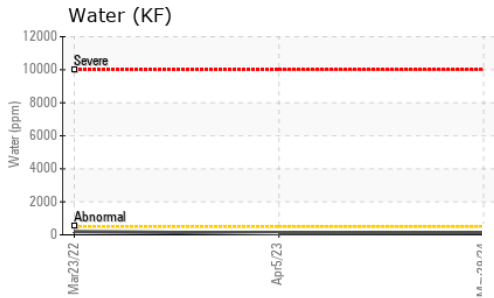
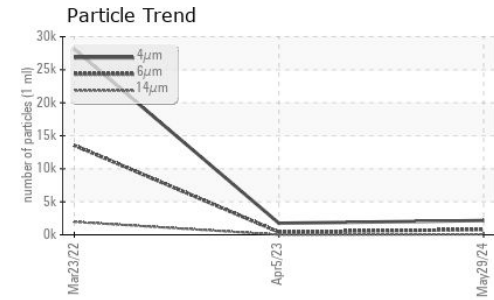
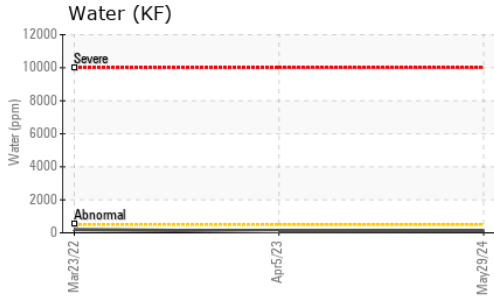
ADDITIVES		method	limit/base	current	history1	history2
Boron	ppm	ASTM D5185m	0	<b>0</b>	0	0
Barium	ppm	ASTM D5185m	90	<b>68</b>	19	51
Molybdenum	ppm	ASTM D5185m	0	<b>&lt;1</b>	0	0
Manganese	ppm	ASTM D5185m		<b>&lt;1</b>	0	0
Magnesium	ppm	ASTM D5185m	100	<b>87</b>	77	77
Calcium	ppm	ASTM D5185m	0	<b>0</b>	0	0
Phosphorus	ppm	ASTM D5185m	0	<b>4</b>	0	0
Zinc	ppm	ASTM D5185m	0	<b>3</b>	0	<1
Sulfur	ppm	ASTM D5185m	23500	<b>21012</b>	24007	18061

CONTAMINANTS		method	limit/base	current	history1	history2
Silicon	ppm	ASTM D5185m	>25	<b>1</b>	<1	<1
Sodium	ppm	ASTM D5185m		<b>4</b>	6	9
Potassium	ppm	ASTM D5185m	>20	<b>2</b>	0	0
Water	%	ASTM D6304	>0.05	<b>0.012</b>	0.008	0.019
ppm Water	ppm	ASTM D6304	>500	<b>120</b>	83.4	198.3

FLUID CLEANLINESS		method	limit/base	current	history1	history2
Particles >4µm		ASTM D7647		<b>2167</b>	1754	28106
Particles >6µm		ASTM D7647	>1300	<b>797</b>	410	▲ 13557
Particles >14µm		ASTM D7647	>80	<b>78</b>	18	▲ 1960
Particles >21µm		ASTM D7647	>20	<b>17</b>	5	▲ 463
Particles >38µm		ASTM D7647	>4	<b>0</b>	0	▲ 28
Particles >71µm		ASTM D7647	>3	<b>0</b>	0	2
Oil Cleanliness		ISO 4406 (c)	>--/17/13	<b>18/17/13</b>	18/16/11	▲ 22/21/18

FLUID DEGRADATION		method	limit/base	current	history1	history2
Acid Number (AN)	mg KOH/g	ASTM D8045	1.0	<b>0.32</b>	0.31	0.39

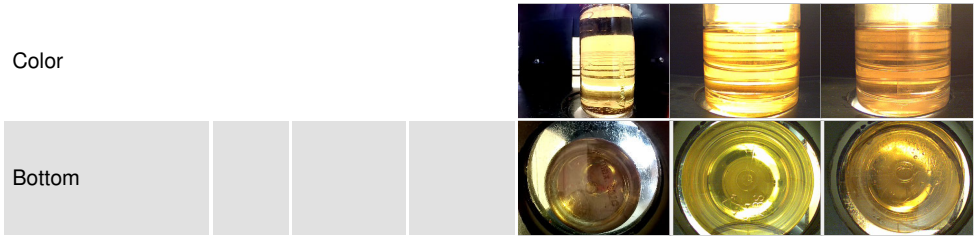
# OIL ANALYSIS REPORT



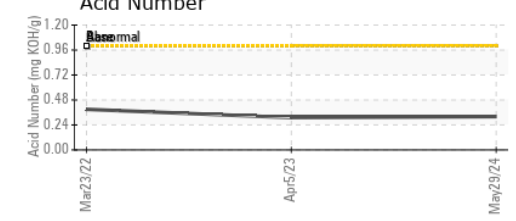
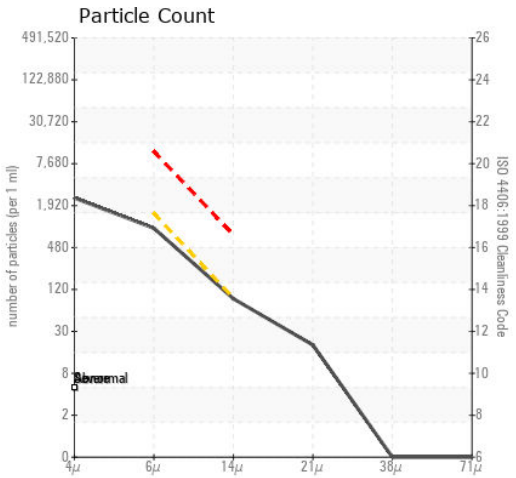
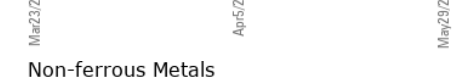
VISUAL	method	limit/base	current	history1	history2
White Metal	scalar	*Visual	NONE	NONE	NONE
Yellow Metal	scalar	*Visual	NONE	NONE	NONE
Precipitate	scalar	*Visual	NONE	NONE	NONE
Silt	scalar	*Visual	NONE	NONE	NONE
Debris	scalar	*Visual	NONE	NONE	NONE
Sand/Dirt	scalar	*Visual	NONE	NONE	NONE
Appearance	scalar	*Visual	NORML	NORML	NORML
Odor	scalar	*Visual	NORML	NORML	NORML
Emulsified Water	scalar	*Visual	>0.05	NEG	NEG
Free Water	scalar	*Visual		NEG	NEG

FLUID PROPERTIES	method	limit/base	current	history1	history2
Visc @ 40°C	cSt	ASTM D445	45	44.7	45.2

SAMPLE IMAGES	method	limit/base	current	history1	history2
---------------	--------	------------	---------	----------	----------



## GRAPHS



**Laboratory** : WearCheck USA - 501 Madison Ave., Cary, NC 27513  
**Sample No.** : KCPA014494 **Received** : 21 Jun 2024  
**Lab Number** : 06217325 **Tested** : 25 Jun 2024  
**Unique Number** : 11090189 **Diagnosed** : 25 Jun 2024 - Don Baldrige  
**Test Package** : IND 2 ( Additional Tests: KF, PrtCount )

**LAKE COUNTY PUBLIC WORKS**  
 1200 HAZEL ST  
 LEADVILLE, CO  
 US 80461  
 Contact: L. RODRIGUEZ  
 lrodiguez@co.lake.co.us

To discuss this sample report, contact Customer Service at 1-800-237-1369.  
 \* - Denotes test methods that are outside of the ISO 17025 scope of accreditation.  
 Statements of conformity to specifications are based on the simple acceptance decision rule (JCGM 106:2012)