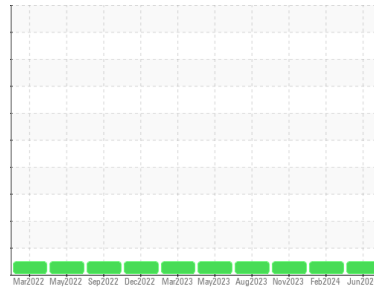




OIL ANALYSIS REPORT

Sample Rating Trend



NORMAL



Machine Id
CRNG_U1 CRNG_U1_P1
 Component
Non-Drive End Pump
 Fluid
SHELL TELLUS 32 (--- GAL)

DIAGNOSIS

Recommendation
 Resample at the next service interval to monitor.

Wear
 All component wear rates are normal.

Contamination
 The water content is negligible. There is no indication of any contamination in the oil.

Fluid Condition
 The AN level is acceptable for this fluid. The condition of the oil is suitable for further service.

SAMPLE INFORMATION		method	limit/base	current	history1	history2
Sample Number	Client Info			RP0032737	RP0032742	RP0027367
Sample Date	Client Info			12 Jun 2024	15 Feb 2024	14 Nov 2023
Machine Age	hrs	Client Info		0	0	0
Oil Age	hrs	Client Info		0	0	0
Oil Changed	Client Info			N/A	N/A	N/A
Sample Status				NORMAL	NORMAL	NORMAL

WEAR METALS		method	limit/base	current	history1	history2
Iron	ppm	ASTM D5185m	>90	3	2	3
Chromium	ppm	ASTM D5185m	>5	<1	<1	<1
Nickel	ppm	ASTM D5185m	>5	<1	<1	<1
Titanium	ppm	ASTM D5185m	>3	<1	<1	<1
Silver	ppm	ASTM D5185m	>3	<1	<1	0
Aluminum	ppm	ASTM D5185m	>7	3	<1	<1
Lead	ppm	ASTM D5185m	>12	<1	<1	<1
Copper	ppm	ASTM D5185m	>30	2	2	1
Tin	ppm	ASTM D5185m	>9	<1	<1	<1
Vanadium	ppm	ASTM D5185m		<1	0	0
Cadmium	ppm	ASTM D5185m		<1	<1	<1

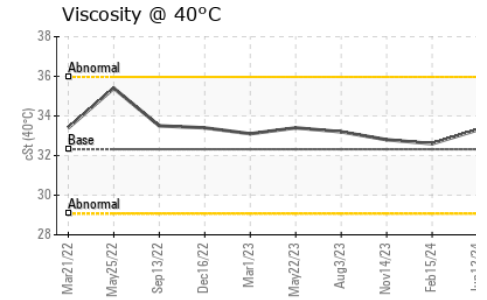
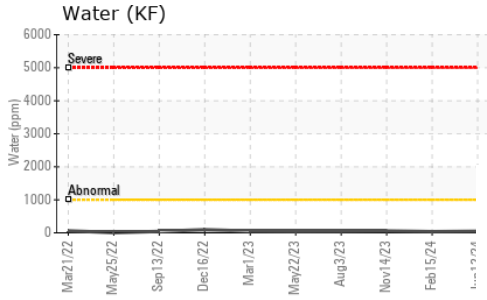
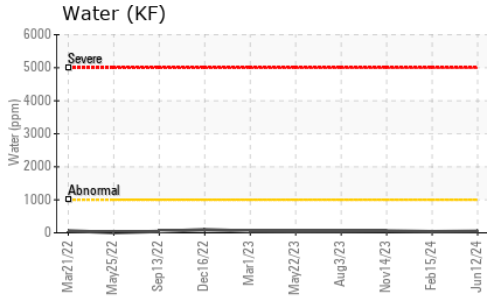
ADDITIVES		method	limit/base	current	history1	history2
Boron	ppm	ASTM D5185m		0	1	0
Barium	ppm	ASTM D5185m		1	5	<1
Molybdenum	ppm	ASTM D5185m		<1	<1	<1
Manganese	ppm	ASTM D5185m		<1	<1	<1
Magnesium	ppm	ASTM D5185m	11	65	55	62
Calcium	ppm	ASTM D5185m	35	13	20	17
Phosphorus	ppm	ASTM D5185m	259	308	220	284
Zinc	ppm	ASTM D5185m	277	362	343	329

CONTAMINANTS		method	limit/base	current	history1	history2
Silicon	ppm	ASTM D5185m	>60	<1	<1	<1
Sodium	ppm	ASTM D5185m		0	0	0
Potassium	ppm	ASTM D5185m	>20	1	<1	<1
Water	%	ASTM D6304	>.1	0.004	0.003	0.005
ppm Water	ppm	ASTM D6304	>1000	48	35	60

FLUID DEGRADATION		method	limit/base	current	history1	history2
Acid Number (AN)	mg KOH/g	ASTM D8045	0.32	0.36	0.35	0.33

VISUAL		method	limit/base	current	history1	history2
White Metal	scalar	*Visual	NONE	NONE	NONE	NONE
Yellow Metal	scalar	*Visual	NONE	NONE	NONE	NONE
Precipitate	scalar	*Visual	NONE	NONE	NONE	NONE
Silt	scalar	*Visual	NONE	NONE	NONE	NONE
Debris	scalar	*Visual	NONE	LIGHT	NONE	NONE
Sand/Dirt	scalar	*Visual	NONE	NONE	NONE	NONE
Appearance	scalar	*Visual	NORML	NORML	NORML	NORML
Odor	scalar	*Visual	NORML	NORML	NORML	NORML
Emulsified Water	scalar	*Visual	>.1	NEG	NEG	NEG
Free Water	scalar	*Visual		NEG	NEG	NEG

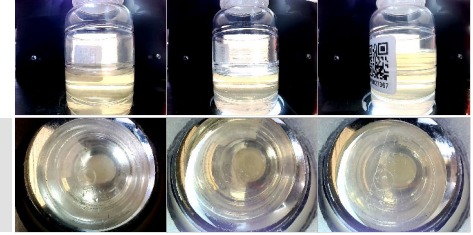
OIL ANALYSIS REPORT



FLUID PROPERTIES		method	limit/base	current	history1	history2
Visc @ 40°C	cSt	ASTM D445	32.32	33.3	32.6	32.8

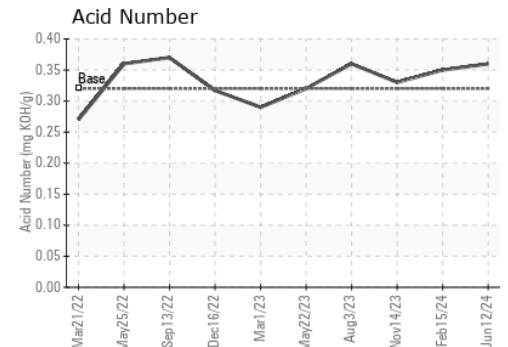
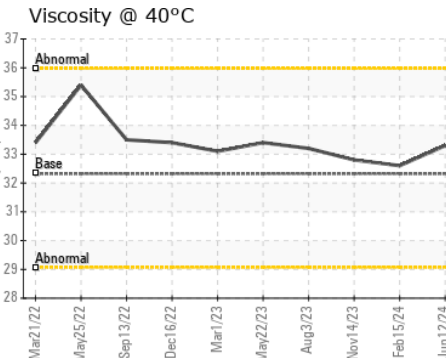
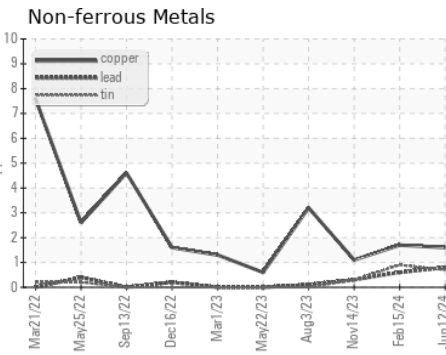
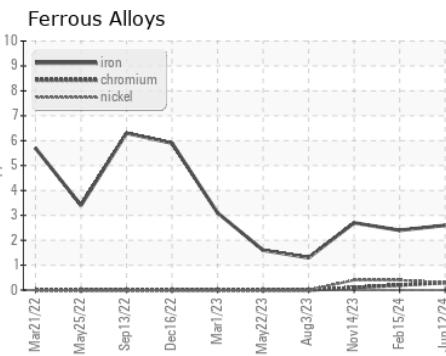
SAMPLE IMAGES		method	limit/base	current	history1	history2
---------------	--	--------	------------	---------	----------	----------

Color



Bottom

GRAPHS



Certificate L2367

Laboratory : WearCheck USA - 501 Madison Ave., Cary, NC 27513
Sample No. : RP0032737
Lab Number : **06217373**
Unique Number : 11090237
Test Package : IND 2

Received : 21 Jun 2024
Tested : 25 Jun 2024
Diagnosed : 25 Jun 2024 - Don Baldrige

ENERGY TRANSFER - CORNING
 3346 GORTON ROAD
 CORNING, NY
 US 14830

Contact: NICHOLAS PUCCI
 NICHOLAS.PUCCI@ENERGYTRANSFER.COM
 T: (610)858-3838

To discuss this sample report, contact Customer Service at 1-800-237-1369.

* - Denotes test methods that are outside of the ISO 17025 scope of accreditation.

Statements of conformity to specifications are based on the simple acceptance decision rule (JCGM 106:2012)

F: