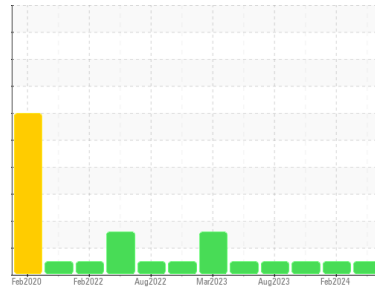




# OIL ANALYSIS REPORT

Sample Rating Trend



**NORMAL**



Machine Id  
**SYLV\_U1 SYLV\_U1\_M1**  
 Component  
**Non-Drive End Bearing**  
 Fluid  
**SHELL TELLUS 32 (--- GAL)**

**DIAGNOSIS**

**Recommendation**

Resample at the next service interval to monitor.

**Wear**

All component wear rates are normal.

**Contamination**

The water content is negligible. There is no indication of any contamination in the oil.

**Fluid Condition**

The AN level is acceptable for this fluid. The condition of the oil is suitable for further service.

SAMPLE INFORMATION		method	limit/base	current	history1	history2
Sample Number	Client Info			<b>RP0032732</b>	RP0036974	RP0027363
Sample Date	Client Info			<b>12 Jun 2024</b>	16 Feb 2024	01 Nov 2023
Machine Age	hrs	Client Info		<b>0</b>	0	0
Oil Age	hrs	Client Info		<b>0</b>	0	0
Oil Changed	Client Info			<b>N/A</b>	N/A	N/A
Sample Status				<b>NORMAL</b>	NORMAL	NORMAL

WEAR METALS		method	limit/base	current	history1	history2
Iron	ppm	ASTM D5185m	>20	<b>&lt;1</b>	<1	0
Chromium	ppm	ASTM D5185m	>20	<b>&lt;1</b>	<1	<1
Nickel	ppm	ASTM D5185m	>20	<b>&lt;1</b>	<1	<1
Titanium	ppm	ASTM D5185m		<b>&lt;1</b>	<1	<1
Silver	ppm	ASTM D5185m		<b>&lt;1</b>	<1	<1
Aluminum	ppm	ASTM D5185m	>20	<b>3</b>	<1	2
Lead	ppm	ASTM D5185m	>20	<b>&lt;1</b>	<1	<1
Copper	ppm	ASTM D5185m	>20	<b>3</b>	3	2
Tin	ppm	ASTM D5185m	>20	<b>7</b>	7	5
Vanadium	ppm	ASTM D5185m		<b>&lt;1</b>	0	0
Cadmium	ppm	ASTM D5185m		<b>&lt;1</b>	<1	<1

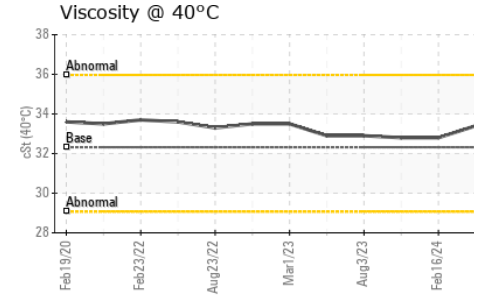
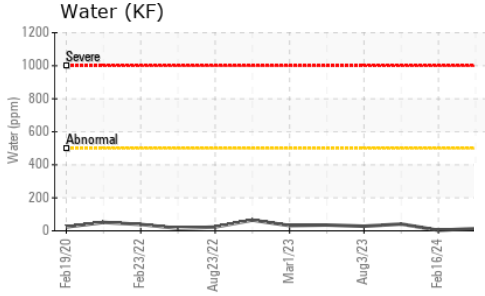
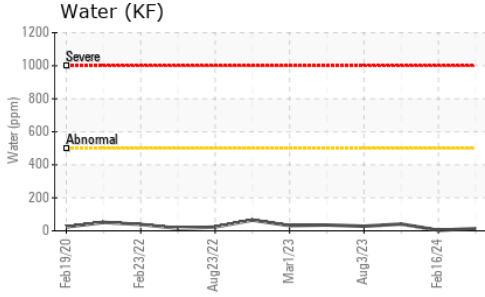
ADDITIVES		method	limit/base	current	history1	history2
Boron	ppm	ASTM D5185m		<b>0</b>	0	0
Barium	ppm	ASTM D5185m		<b>1</b>	5	0
Molybdenum	ppm	ASTM D5185m		<b>&lt;1</b>	<1	<1
Manganese	ppm	ASTM D5185m		<b>&lt;1</b>	<1	0
Magnesium	ppm	ASTM D5185m	11	<b>67</b>	64	67
Calcium	ppm	ASTM D5185m	35	<b>9</b>	13	13
Phosphorus	ppm	ASTM D5185m	259	<b>302</b>	235	280
Zinc	ppm	ASTM D5185m	277	<b>355</b>	338	345

CONTAMINANTS		method	limit/base	current	history1	history2
Silicon	ppm	ASTM D5185m	>15	<b>5</b>	3	3
Sodium	ppm	ASTM D5185m		<b>0</b>	0	0
Potassium	ppm	ASTM D5185m	>20	<b>2</b>	<1	1
Water	%	ASTM D6304	>0.05	<b>0.001</b>	0.001	0.004
ppm Water	ppm	ASTM D6304	>500	<b>14</b>	3	41.2

FLUID DEGRADATION		method	limit/base	current	history1	history2
Acid Number (AN)	mg KOH/g	ASTM D8045	0.32	<b>0.35</b>	0.34	0.30

VISUAL		method	limit/base	current	history1	history2
White Metal	scalar	*Visual	NONE	<b>NONE</b>	NONE	NONE
Yellow Metal	scalar	*Visual	NONE	<b>NONE</b>	NONE	NONE
Precipitate	scalar	*Visual	NONE	<b>NONE</b>	NONE	NONE
Silt	scalar	*Visual	NONE	<b>NONE</b>	NONE	NONE
Debris	scalar	*Visual	NONE	<b>NONE</b>	NONE	NONE
Sand/Dirt	scalar	*Visual	NONE	<b>NONE</b>	NONE	NONE
Appearance	scalar	*Visual	NORML	<b>NORML</b>	NORML	NORML
Odor	scalar	*Visual	NORML	<b>NORML</b>	NORML	NORML
Emulsified Water	scalar	*Visual	>0.05	<b>NEG</b>	NEG	NEG
Free Water	scalar	*Visual		<b>NEG</b>	NEG	NEG

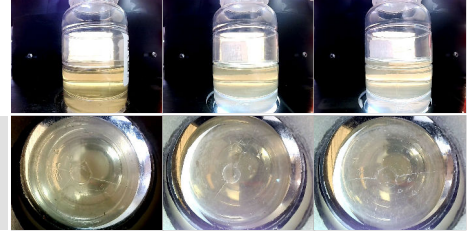
# OIL ANALYSIS REPORT



FLUID PROPERTIES		method	limit/base	current	history1	history2
Visc @ 40°C	cSt	ASTM D445	32.32	<b>33.4</b>	32.8	32.8

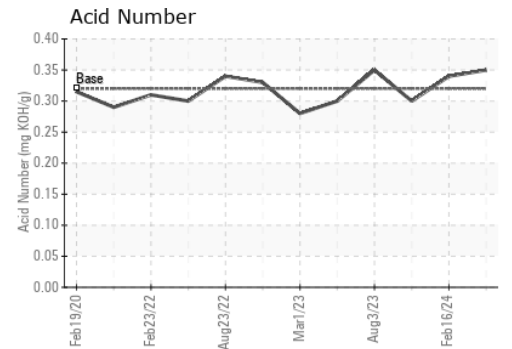
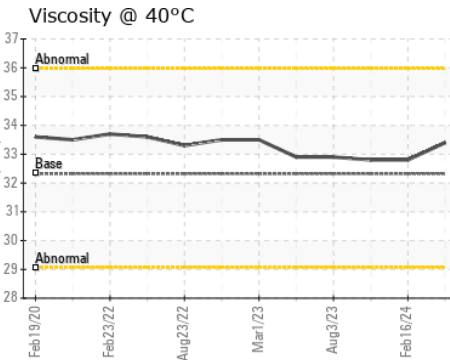
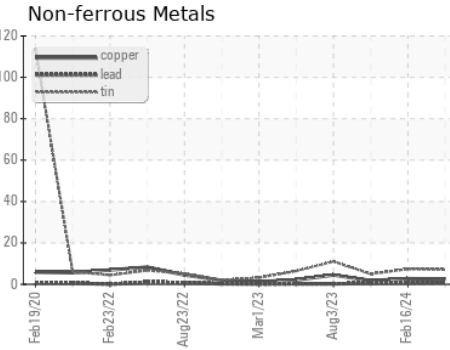
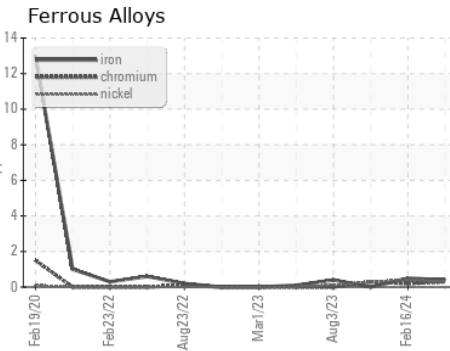
SAMPLE IMAGES		method	limit/base	current	history1	history2
---------------	--	--------	------------	---------	----------	----------

Color



Bottom

## GRAPHS



Certificate L2367

**Laboratory** : WearCheck USA - 501 Madison Ave., Cary, NC 27513  
**Sample No.** : RP0032732  
**Lab Number** : **06217383**  
**Unique Number** : 11090247  
**Test Package** : IND 2

**Received** : 21 Jun 2024  
**Tested** : 25 Jun 2024  
**Diagnosed** : 25 Jun 2024 - Don Baldrige

**ENERGY TRANSFER - SYLVANIA**  
 ROUTE 6  
 SYLVANIA, PA  
 US 16945  
 Contact: JERRY HIGGINS

To discuss this sample report, contact Customer Service at 1-800-237-1369.

\* - Denotes test methods that are outside of the ISO 17025 scope of accreditation.

Statements of conformity to specifications are based on the simple acceptance decision rule (JCGM 106:2012)

T: (610)858-3838

F: