

Area

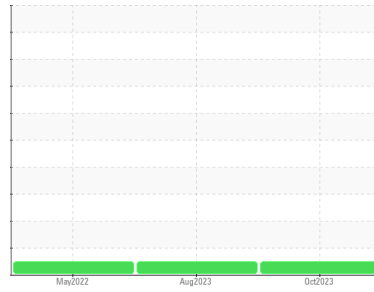
PAL XTRA 44

Machine Id

SULLIVAN PALATEK 1410240002 - JAC PRODUCTS

Component

Compressor



DIAGNOSIS

Recommendation

The filter change at the time of sampling has been noted. Resample at the next service interval to monitor.

Wear

All component wear rates are normal.

Contamination

There is a moderate amount of visible silt present in the sample.

Fluid Condition

The AN level is acceptable for this fluid. The condition of the oil is suitable for further service.

SAMPLE INFORMATION		method	limit/base	current	history1	history2
Sample Number	Client Info			UCS06218365	UCS05934924	UCS05605315
Sample Date	Client Info			29 Oct 2023	20 Aug 2023	09 May 2022
Machine Age	hrs	Client Info		53136	51499	43338
Oil Age	hrs	Client Info		1800	5000	2000
Oil Changed	Client Info			Not Changed	Changed	Not Changed
Sample Status				NORMAL	NORMAL	NORMAL

CONTAMINATION		method	limit/base	current	history1	history2
Water	WC Method		>0.1	NEG	NEG	NEG

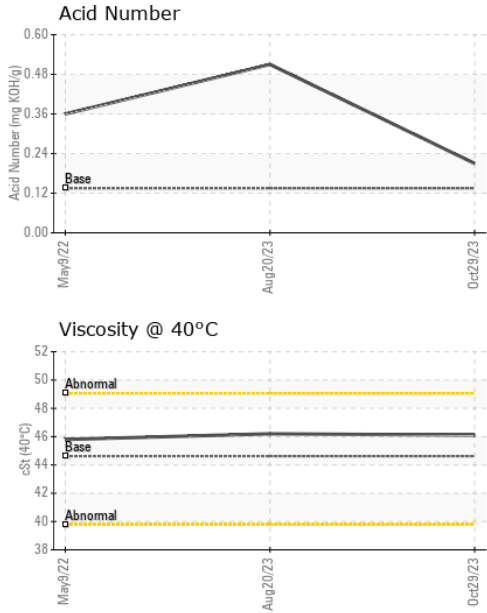
WEAR METALS		method	limit/base	current	history1	history2
Iron	ppm	ASTM D5185m	>50	2	<1	0
Chromium	ppm	ASTM D5185m	>10	0	0	0
Nickel	ppm	ASTM D5185m		0	0	<1
Titanium	ppm	ASTM D5185m		0	0	0
Silver	ppm	ASTM D5185m		0	0	<1
Aluminum	ppm	ASTM D5185m	>25	1	0	1
Lead	ppm	ASTM D5185m	>25	0	0	0
Copper	ppm	ASTM D5185m	>50	1	<1	<1
Tin	ppm	ASTM D5185m	>15	0	0	<1
Vanadium	ppm	ASTM D5185m		0	0	0
Cadmium	ppm	ASTM D5185m		0	0	0

ADDITIVES		method	limit/base	current	history1	history2
Boron	ppm	ASTM D5185m	0	0	0	<1
Barium	ppm	ASTM D5185m	0.3	0	2	0
Molybdenum	ppm	ASTM D5185m	0	0	0	0
Manganese	ppm	ASTM D5185m	0.3	0	0	0
Magnesium	ppm	ASTM D5185m	0.4	0	0	0
Calcium	ppm	ASTM D5185m	0	1	0	0
Phosphorus	ppm	ASTM D5185m	689	413	145	310
Zinc	ppm	ASTM D5185m	0	1	0	0
Sulfur	ppm	ASTM D5185m	1237	757	288	380

CONTAMINANTS		method	limit/base	current	history1	history2
Silicon	ppm	ASTM D5185m	>25	4	2	15
Sodium	ppm	ASTM D5185m		1	0	0
Potassium	ppm	ASTM D5185m	>20	0	1	0

FLUID DEGRADATION		method	limit/base	current	history1	history2
Acid Number (AN)	mg KOH/g	ASTM D8045	0.135	0.21	0.51	0.36

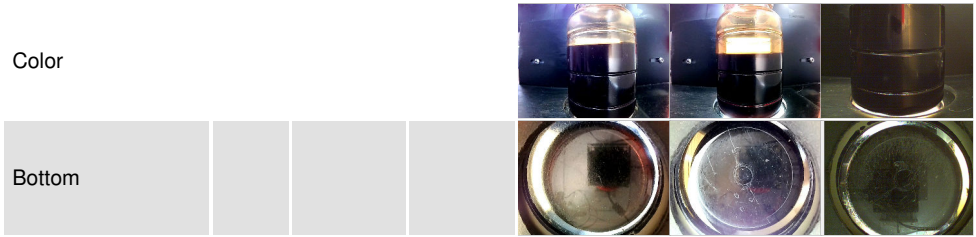
OIL ANALYSIS REPORT



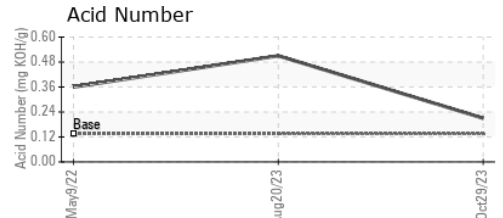
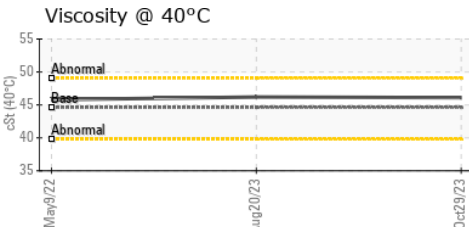
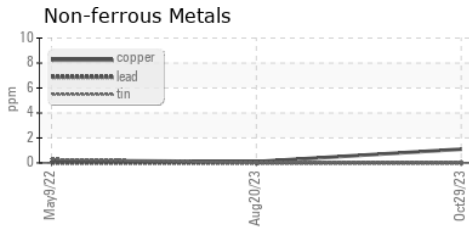
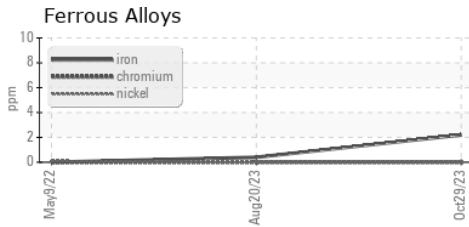
VISUAL	method	limit/base	current	history1	history2	
White Metal	scalar	*Visual	NONE	NONE	MODER	LIGHT
Yellow Metal	scalar	*Visual	NONE	NONE	NONE	NONE
Precipitate	scalar	*Visual	NONE	NONE	NONE	NONE
Silt	scalar	*Visual	NONE	MODER	NONE	NONE
Debris	scalar	*Visual	NONE	LIGHT	MODER	NONE
Sand/Dirt	scalar	*Visual	NONE	NONE	NONE	NONE
Appearance	scalar	*Visual	NORML	NORML	NORML	NORML
Odor	scalar	*Visual	NORML	NORML	NORML	NORML
Emulsified Water	scalar	*Visual	>0.1	NEG	NEG	NEG
Free Water	scalar	*Visual		NEG	NEG	NEG

FLUID PROPERTIES	method	limit/base	current	history1	history2	
Visc @ 40°C	cSt	ASTM D445	44.62	46.1	46.2	45.8

SAMPLE IMAGES	method	limit/base	current	history1	history2
---------------	--------	------------	---------	----------	----------



GRAPHS



Laboratory : WearCheck USA - 501 Madison Ave., Cary, NC 27513
Sample No. : UCS06218365 **Received** : 24 Jun 2024
Lab Number : 06218365 **Tested** : 25 Jun 2024
Unique Number : 11096562 **Diagnosed** : 26 Jun 2024 - Don Baldrige
Test Package : IND 2

CH REED INC - CLEVELAND
 STRONGSVILLE, OH
 US 44149
 Contact: BOB ZUK
 bobzuk@chreed.com

To discuss this sample report, contact Customer Service at 1-800-237-1369.
 * - Denotes test methods that are outside of the ISO 17025 scope of accreditation.
 Statements of conformity to specifications are based on the simple acceptance decision rule (JCGM 106:2012)