



FUEL REPORT

Sample Rating Trend



NORMAL



Machine Id
KIOTI DK6010HSE XGG700009
 Component
Diesel Fuel
 Fluid
No.2 DIESEL FUEL (ULTRALOW SULPHUR) (--- GAL)

DIAGNOSIS

Recommendation

All laboratory tests indicate that this sample meets specifications for No.2 ultra-low-sulfur diesel fuel.

Corrosion

All metal levels are normal indicating no corrosion in the system.

Contaminants

The water content is negligible. There is no bacteria or fungus (yeast and/or mold) indicated in the sample. There is no indication of any contamination in the fuel. The amount and size of particulates present in the system are acceptable.

Fuel Condition

Sulfur value derived by ASTM D5453 method for ULSD validation. Sulfur level is acceptable for ULSD specification.

SAMPLE INFORMATION		method	limit/base	current	history1	history2
Sample Number	Client Info			KT0001477	---	---
Sample Date	Client Info			20 Jun 2024	---	---
Machine Age	hrs	Client Info		447	---	---
Sample Status				NORMAL	---	---

PHYSICAL PROPERTIES		method	limit/base	current	history1	history2
ASTM Color	scalar	*ASTM D1500		L2.0	---	---
Visc @ 40°C	cSt	ASTM D445	3.0	2.57	---	---
Pensky-Martens Flash Point	°C	*PMCC Calculated	52	61	---	---

SULFUR CONTENT		method	limit/base	current	history1	history2
Sulfur	ppm	ASTM D5185m	10	6	---	---
Sulfur (UVF)	ppm	ASTM D5453		11	---	---

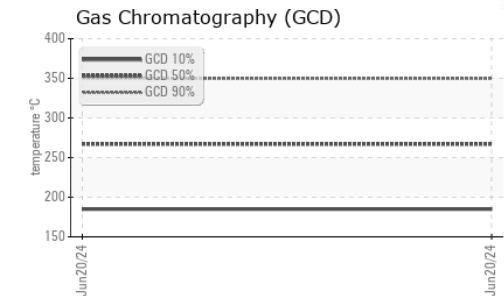
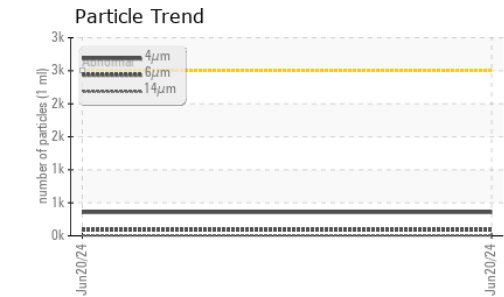
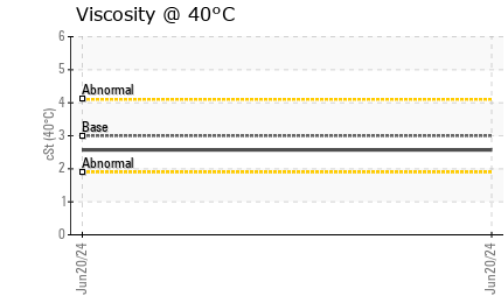
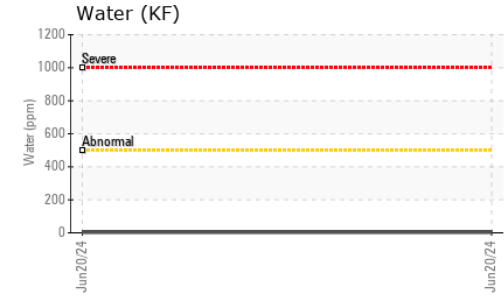
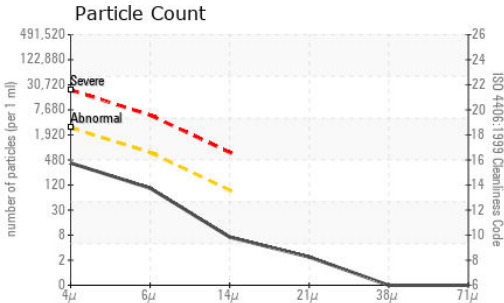
DISTILLATION		method	limit/base	current	history1	history2
Initial Boiling Point	°C	ASTM D86	165	172	---	---
5% Distillation Point	°C	ASTM D86		196	---	---
10% Distill Point	°C	ASTM D86	201	207	---	---
15% Distillation Point	°C	ASTM D86		216	---	---
20% Distill Point	°C	ASTM D86	216	224	---	---
30% Distill Point	°C	ASTM D86	230	239	---	---
40% Distill Point	°C	ASTM D86	243	251	---	---
50% Distill Point	°C	ASTM D86	255	264	---	---
60% Distill Point	°C	ASTM D86	267	278	---	---
70% Distill Point	°C	ASTM D86	280	292	---	---
80% Distill Point	°C	ASTM D86	295	307	---	---
85% Distillation Point	°C	ASTM D86		318	---	---
90% Distill Point	°C	ASTM D86	310	329	---	---
95% Distillation Point	°C	ASTM D86		346	---	---
Final Boiling Point	°C	ASTM D86	341	360	---	---

IGNITION QUALITY		method	limit/base	current	history1	history2
API Gravity		ASTM D7777	37.7	36	---	---
Cetane Index		ASTM D4737	<40.0	49	---	---

CONTAMINANTS		method	limit/base	current	history1	history2
Silicon	ppm	ASTM D5185m	<1.0	0	---	---
Sodium	ppm	ASTM D5185m	<0.1	2	---	---
Potassium	ppm	ASTM D5185m	<0.1	<1	---	---
Water	%	ASTM D6304	<0.05	0.001	---	---
ppm Water	ppm	ASTM D6304	<500	3	---	---
% Gasoline	%	*In-House	<0.50	0.0	---	---
% Biodiesel	%	*In-House	<20.0	0.0	---	---



FUEL REPORT

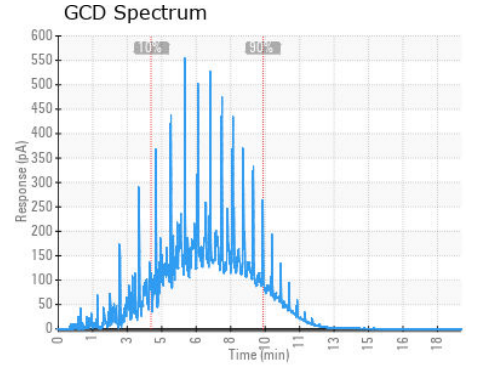
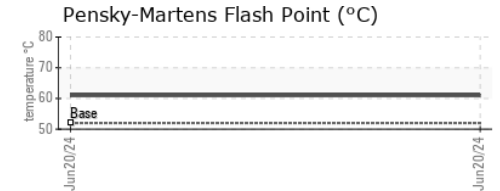
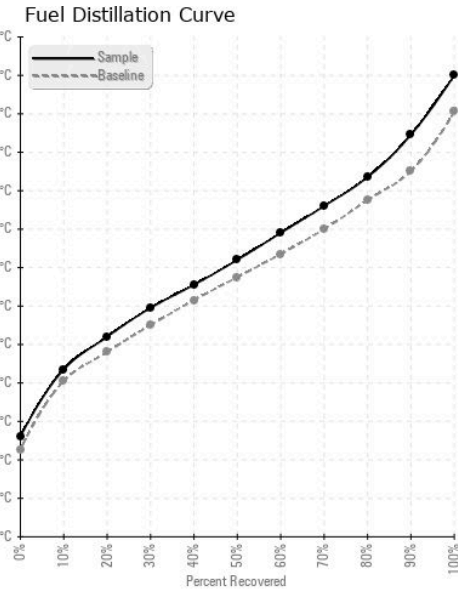


FLUID CLEANLINESS	method	limit/base	current	history1	history2
Particles >4µm	ASTM D7647	>2500	357	---	---
Particles >6µm	ASTM D7647	>640	89	---	---
Particles >14µm	ASTM D7647	>80	6	---	---
Particles >21µm	ASTM D7647	>20	2	---	---
Particles >38µm	ASTM D7647	>4	0	---	---
Particles >71µm	ASTM D7647	>3	0	---	---
Oil Cleanliness	ISO 4406 (c)	>18/16/13	16/14/10	---	---

HEAVY METALS	method	limit/base	current	history1	history2
Aluminum	ppm	ASTM D5185m <0.1	0	---	---
Nickel	ppm	ASTM D5185m <0.1	0	---	---
Lead	ppm	ASTM D5185m <0.1	0	---	---
Vanadium	ppm	ASTM D5185m <0.1	0	---	---
Iron	ppm	ASTM D5185m <0.1	0	---	---
Calcium	ppm	ASTM D5185m <0.1	0	---	---
Magnesium	ppm	ASTM D5185m <0.1	0	---	---
Phosphorus	ppm	ASTM D5185m <0.1	0	---	---
Zinc	ppm	ASTM D5185m <0.1	0	---	---

SAMPLE IMAGES	method	limit/base	current	history1	history2
Color				no image	no image
Bottom				no image	no image

GRAPHS



Laboratory : WearCheck USA - 501 Madison Ave., Cary, NC 27513
Sample No. : KT0001477
Lab Number : **06219245**
Unique Number : 11097442
Test Package : DF-2 (Additional Tests: Fuel, Screen)
Received : 24 Jun 2024
Tested : 27 Jun 2024
Diagnosed : 27 Jun 2024 - Elizabeth Valachovic

COBLENTZ EQUIPMENT
 10400 HWY 80 E
 MONTGOMERY, AL
 US 36117
 Contact: BROOKE
 brooke@coblentzep.com
 T: (334)215-8600
 F:

Certificate L2367
 To discuss this sample report, contact Customer Service at 1-800-237-1369.
 * - Denotes test methods that are outside of the ISO 17025 scope of accreditation.
 Statements of conformity to specifications are based on the simple acceptance decision rule (JCGM 106:2012)