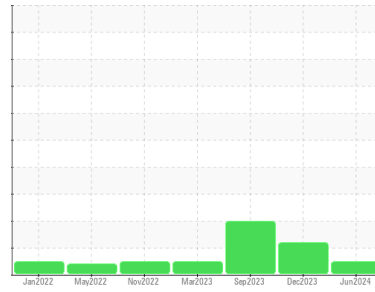




OIL ANALYSIS REPORT

Sample Rating Trend



NORMAL



Machine Id
INGERSOLL RAND PG4571U08294 - CINTAS GREENVILLE
 Component
Compressor
 Fluid
INGERSOLL-RAND SSR ULTRA COOLANT (3 GAL)

DIAGNOSIS

Recommendation

Resample at the next service interval to monitor.

Wear

All component wear rates are normal.

Contamination

There is no indication of any contamination in the oil.

Fluid Condition

The AN level is acceptable for this fluid. The condition of the oil is suitable for further service.

SAMPLE INFORMATION

	method	limit/base	current	history1	history2
Sample Number	Client Info		WC0915326	WC0863654	WC0845190
Sample Date	Client Info		20 Jun 2024	27 Dec 2023	11 Sep 2023
Machine Age	hrs	Client Info	26395	23360	26358
Oil Age	hrs	Client Info	0	0	18843
Oil Changed	Client Info		Not Chngd	Not Chngd	N/A
Sample Status			NORMAL	ATTENTION	ATTENTION

CONTAMINATION

	method	limit/base	current	history1	history2
Water	WC Method	>0.1	NEG	NEG	NEG

WEAR METALS

	method	limit/base	current	history1	history2
Iron	ppm	ASTM D5185m >50	0	1	<1
Chromium	ppm	ASTM D5185m >10	0	<1	<1
Nickel	ppm	ASTM D5185m	<1	0	<1
Titanium	ppm	ASTM D5185m	0	0	0
Silver	ppm	ASTM D5185m	0	0	0
Aluminum	ppm	ASTM D5185m >25	0	1	0
Lead	ppm	ASTM D5185m >25	0	0	<1
Copper	ppm	ASTM D5185m >50	0	<1	<1
Tin	ppm	ASTM D5185m >15	0	0	<1
Vanadium	ppm	ASTM D5185m	0	0	<1
Cadmium	ppm	ASTM D5185m	0	0	<1

ADDITIVES

	method	limit/base	current	history1	history2
Boron	ppm	ASTM D5185m 0	0	0	4
Barium	ppm	ASTM D5185m 500	16	50	34
Molybdenum	ppm	ASTM D5185m 0	0	0	0
Manganese	ppm	ASTM D5185m	<1	0	0
Magnesium	ppm	ASTM D5185m 0	0	<1	0
Calcium	ppm	ASTM D5185m 0	0	0	3
Phosphorus	ppm	ASTM D5185m 20	360	1206	1453
Zinc	ppm	ASTM D5185m 0	4	0	15
Sulfur	ppm	ASTM D5185m 200	36	166	184

CONTAMINANTS

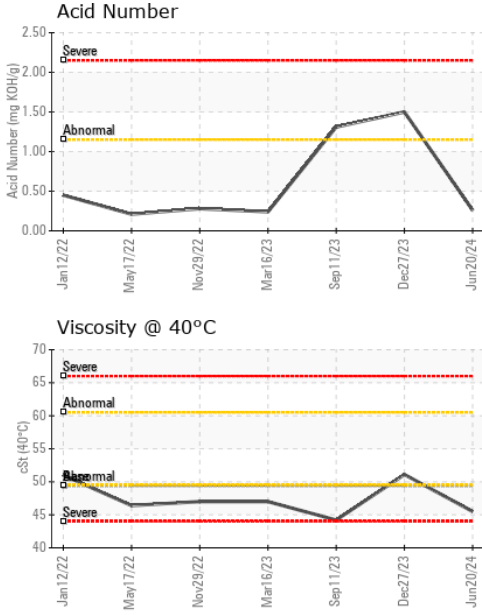
	method	limit/base	current	history1	history2
Silicon	ppm	ASTM D5185m >25	4	9	2
Sodium	ppm	ASTM D5185m	5	23	27
Potassium	ppm	ASTM D5185m >20	1	1	1

FLUID DEGRADATION

	method	limit/base	current	history1	history2
Acid Number (AN)	mg KOH/g	ASTM D8045	0.26	1.50	1.31



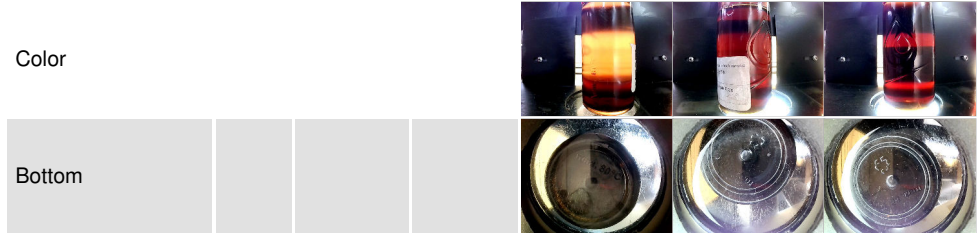
OIL ANALYSIS REPORT



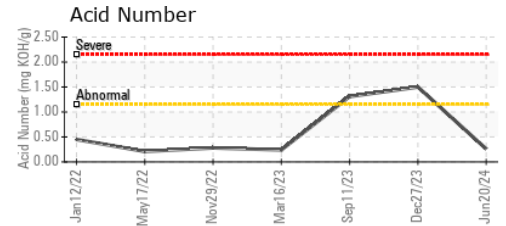
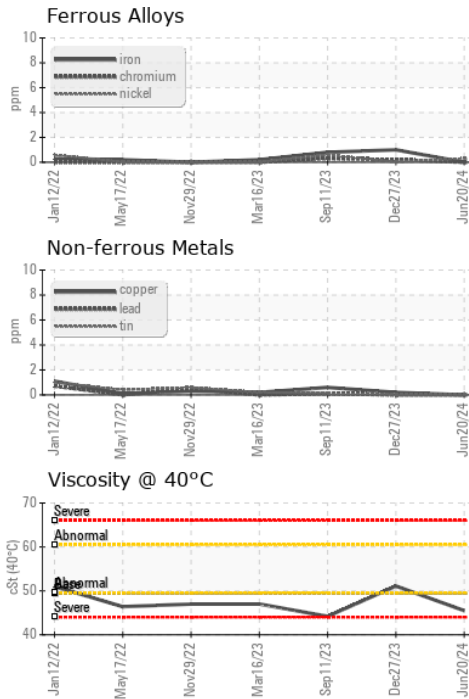
VISUAL	method	limit/base	current	history1	history2
White Metal	scalar	*Visual	NONE	LIGHT	NONE
Yellow Metal	scalar	*Visual	NONE	NONE	NONE
Precipitate	scalar	*Visual	NONE	NONE	NONE
Silt	scalar	*Visual	NONE	NONE	NONE
Debris	scalar	*Visual	NONE	LIGHT	NONE
Sand/Dirt	scalar	*Visual	NONE	NONE	NONE
Appearance	scalar	*Visual	NORML	NORML	NORML
Odor	scalar	*Visual	NORML	NORML	NORML
Emulsified Water	scalar	*Visual	>0.1	NEG	NEG
Free Water	scalar	*Visual		NEG	NEG

FLUID PROPERTIES	method	limit/base	current	history1	history2	
Visc @ 40°C	cSt	ASTM D445	49.4	45.5	51.1	44.2

SAMPLE IMAGES	method	limit/base	current	history1	history2
---------------	--------	------------	---------	----------	----------



GRAPHS



Certificate L2367

Laboratory : WearCheck USA - 501 Madison Ave., Cary, NC 27513
Sample No. : WC0915326
Lab Number : 06219846
Unique Number : 11098043
Test Package : IND 2

Received : 25 Jun 2024
Tested : 26 Jun 2024
Diagnosed : 27 Jun 2024 - Don Baldrige

ELEVATED INDUSTRIAL SOLUTIONS - IIS
 302 HUGHES ST
 FOUNTAIN INN, SC
 US 29644

Contact: DARRIN WARD
 dward@elevatedindustrial.com

To discuss this sample report, contact Customer Service at 1-800-237-1369.

* - Denotes test methods that are outside of the ISO 17025 scope of accreditation.

Statements of conformity to specifications are based on the simple acceptance decision rule (JCGM 106:2012)

F: (864)862-7653