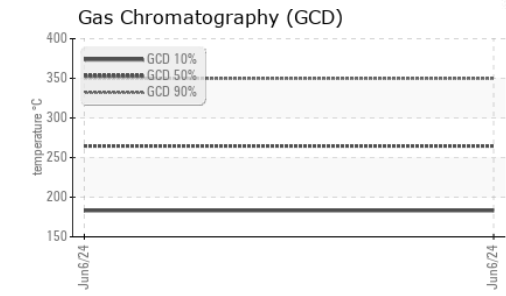
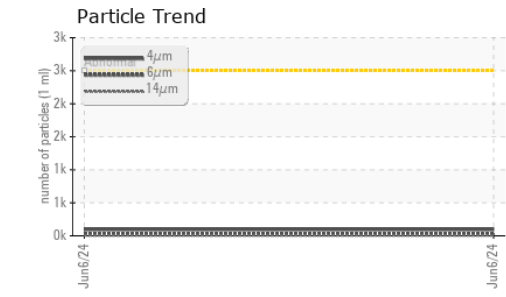
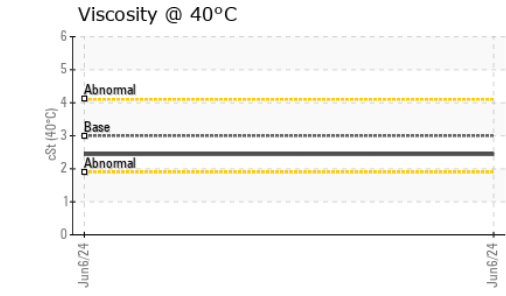
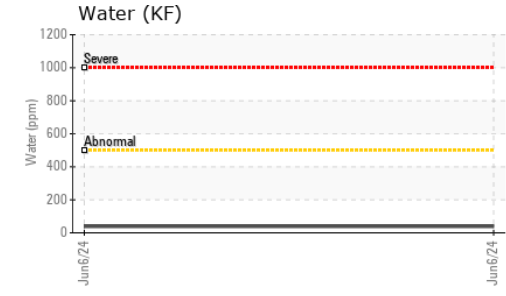
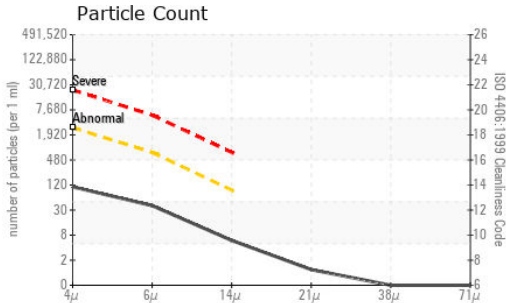




FUEL REPORT

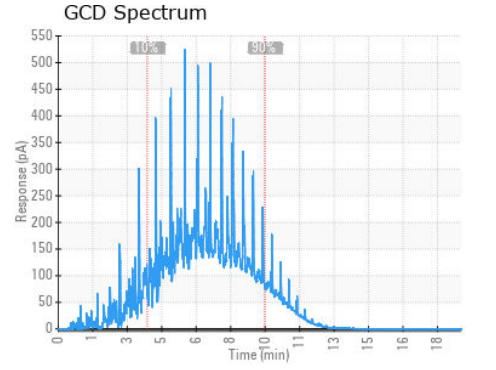
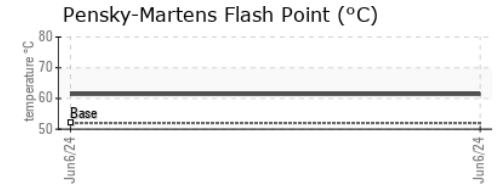
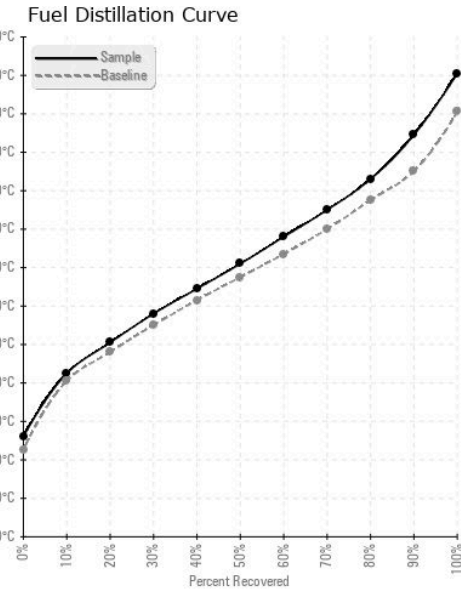


| FLUID CLEANLINESS | method | limit/base | current | history1 | history2 |
|-------------------|--------------|------------|-----------------|----------|----------|
| Particles >4µm | ASTM D7647 | >2500 | 96 | --- | --- |
| Particles >6µm | ASTM D7647 | >640 | 34 | --- | --- |
| Particles >14µm | ASTM D7647 | >80 | 5 | --- | --- |
| Particles >21µm | ASTM D7647 | >20 | 1 | --- | --- |
| Particles >38µm | ASTM D7647 | >4 | 0 | --- | --- |
| Particles >71µm | ASTM D7647 | >3 | 0 | --- | --- |
| Oil Cleanliness | ISO 4406 (c) | >18/16/13 | 14/12/10 | --- | --- |

| HEAVY METALS | method | limit/base | current | history1 | history2 |
|--------------|--------|------------------|--------------|----------|----------|
| Aluminum | ppm | ASTM D5185m <0.1 | 0 | --- | --- |
| Nickel | ppm | ASTM D5185m <0.1 | 0 | --- | --- |
| Lead | ppm | ASTM D5185m <0.1 | 0 | --- | --- |
| Vanadium | ppm | ASTM D5185m <0.1 | 0 | --- | --- |
| Iron | ppm | ASTM D5185m <0.1 | 0 | --- | --- |
| Calcium | ppm | ASTM D5185m <0.1 | 0 | --- | --- |
| Magnesium | ppm | ASTM D5185m <0.1 | 0 | --- | --- |
| Phosphorus | ppm | ASTM D5185m <0.1 | <1 | --- | --- |
| Zinc | ppm | ASTM D5185m <0.1 | 0 | --- | --- |

| SAMPLE IMAGES | method | limit/base | current | history1 | history2 |
|---------------|--------|------------|---------|----------|----------|
| Color | | | | no image | no image |
| Bottom | | | | no image | no image |

GRAPHS



Laboratory : WearCheck USA - 501 Madison Ave., Cary, NC 27513
Sample No. : WC06220596 **Received** : 25 Jun 2024
Lab Number : **06220596** **Tested** : 01 Jul 2024
Unique Number : 11098793 **Diagnosed** : 01 Jul 2024 - Elizabeth Valachovic
Test Package : DF-2 (Additional Tests: Fuel, Screen)

PETROLEUM RECOVERY SERVICES
 210 POWELL DR
 SUMMERVILLE, SC
 US 29483
 Contact: AJAY EL
 Ajay@prsfuel.com
 T: (843)225-1777
 F:

To discuss this sample report, contact Customer Service at 1-800-237-1369.

* - Denotes test methods that are outside of the ISO 17025 scope of accreditation.
 Statements of conformity to specifications are based on the simple acceptance decision rule (JCGM 106:2012)