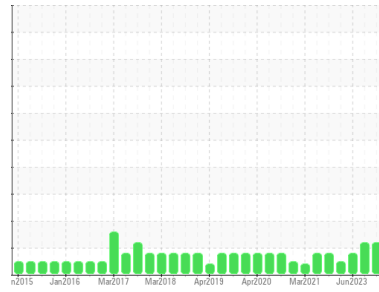




OIL ANALYSIS REPORT

Sample Rating Trend



ISO



Area

RP-101

Machine Id

B57004 - SOUTH DISCHARGE SCREW (S/N 10023277475)

Component

Gearbox

Fluid

PETRO CANADA ENDURATEX EP 320 (--- GAL)

DIAGNOSIS

Recommendation

We recommend you service the filters on this component. We recommend an early resample to monitor this condition. NOTE: Please provide information regarding reservoir capacity, filter type and micron rating with next sample.

Wear

All component wear rates are normal.

Contamination

There is a moderate amount of silt (particulates < 14 microns in size) present in the oil. The system cleanliness is above the acceptable limit for the target ISO 4406 cleanliness code.

Fluid Condition

The AN level is acceptable for this fluid. The oil is still serviceable provided that the contaminant(s) can be reduced to acceptable levels.

SAMPLE INFORMATION

	method	limit/base	current	history1	history2
Sample Number	Client Info		WC0944839	WC0808568	WC0814178
Sample Date	Client Info		21 Jun 2024	27 Sep 2023	17 Jun 2023
Machine Age	mths	Client Info	0	0	0
Oil Age	mths	Client Info	0	0	0
Oil Changed	Client Info		N/A	N/A	N/A
Sample Status			ABNORMAL	ABNORMAL	ABNORMAL

CONTAMINATION

	method	limit/base	current	history1	history2
Water	WC Method	>0.2	NEG	NEG	NEG

WEAR METALS

	method	limit/base	current	history1	history2	
Iron	ppm	ASTM D5185m	>200	29	27	22
Chromium	ppm	ASTM D5185m	>15	0	<1	0
Nickel	ppm	ASTM D5185m	>15	0	0	0
Titanium	ppm	ASTM D5185m		0	0	0
Silver	ppm	ASTM D5185m		0	0	0
Aluminum	ppm	ASTM D5185m	>25	0	0	0
Lead	ppm	ASTM D5185m	>100	0	0	0
Copper	ppm	ASTM D5185m	>200	<1	<1	<1
Tin	ppm	ASTM D5185m	>25	0	0	0
Antimony	ppm	ASTM D5185m	>5	---	---	---
Vanadium	ppm	ASTM D5185m		0	0	<1
Cadmium	ppm	ASTM D5185m		0	0	0

ADDITIVES

	method	limit/base	current	history1	history2	
Boron	ppm	ASTM D5185m	55	24	26	30
Barium	ppm	ASTM D5185m	0	0	0	0
Molybdenum	ppm	ASTM D5185m	0	0	0	0
Manganese	ppm	ASTM D5185m	0	<1	<1	<1
Magnesium	ppm	ASTM D5185m	0	0	<1	0
Calcium	ppm	ASTM D5185m	0	4	<1	0
Phosphorus	ppm	ASTM D5185m	240	422	406	452
Zinc	ppm	ASTM D5185m	1	25	6	0
Sulfur	ppm	ASTM D5185m	13700	6708	5505	6493

CONTAMINANTS

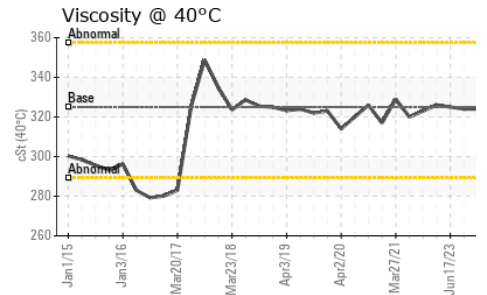
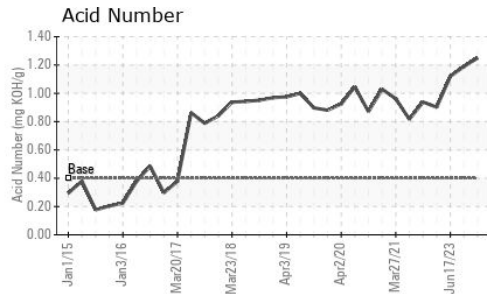
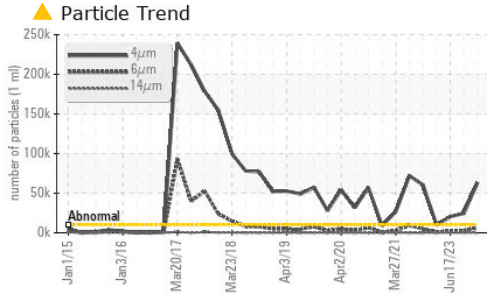
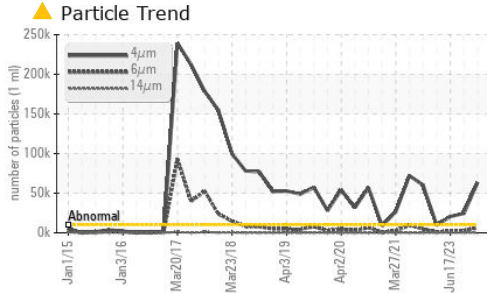
	method	limit/base	current	history1	history2	
Silicon	ppm	ASTM D5185m	>50	<1	<1	<1
Sodium	ppm	ASTM D5185m		<1	<1	<1
Potassium	ppm	ASTM D5185m	>20	2	<1	0

FLUID CLEANLINESS

	method	limit/base	current	history1	history2
Particles >4µm	ASTM D7647	>10000	▲ 63526	▲ 24510	▲ 20491
Particles >6µm	ASTM D7647	>2500	▲ 6279	● 2960	2099
Particles >14µm	ASTM D7647	>320	121	83	73
Particles >21µm	ASTM D7647	>80	21	27	16
Particles >38µm	ASTM D7647	>20	1	3	1
Particles >71µm	ASTM D7647	>4	0	0	0
Oil Cleanliness	ISO 4406 (c)	>20/18/15	▲ 23/20/14	▲ 22/19/14	▲ 22/18/13



OIL ANALYSIS REPORT



FLUID DEGRADATION		method	limit/base	current	history1	history2
Acid Number (AN)	mg KOH/g	ASTM D8045	0.4	1.25	1.19	1.12

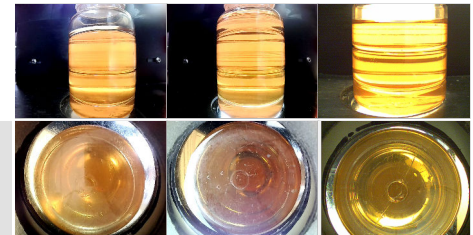
VISUAL		method	limit/base	current	history1	history2
White Metal	scalar	*Visual	NONE	NONE	NONE	NONE
Yellow Metal	scalar	*Visual	NONE	NONE	NONE	NONE
Precipitate	scalar	*Visual	NONE	NONE	NONE	NONE
Silt	scalar	*Visual	NONE	NONE	NONE	NONE
Debris	scalar	*Visual	NONE	NONE	NONE	NONE
Sand/Dirt	scalar	*Visual	NONE	NONE	NONE	NONE
Appearance	scalar	*Visual	NORML	NORML	NORML	NORML
Odor	scalar	*Visual	NORML	NORML	NORML	NORML
Emulsified Water	scalar	*Visual	>0.2	NEG	NEG	NEG
Free Water	scalar	*Visual		NEG	NEG	NEG

FLUID PROPERTIES		method	limit/base	current	history1	history2
Visc @ 40°C	cSt	ASTM D445	325	324	324	325

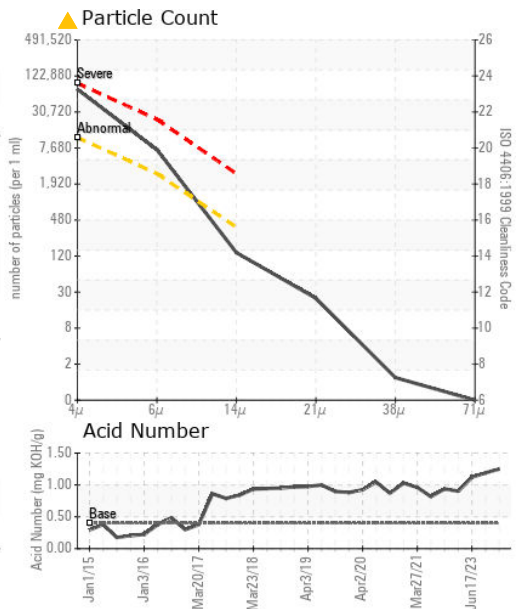
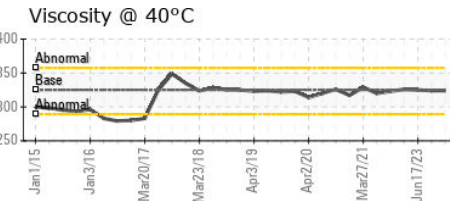
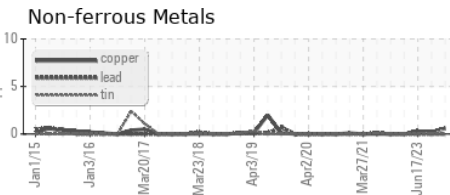
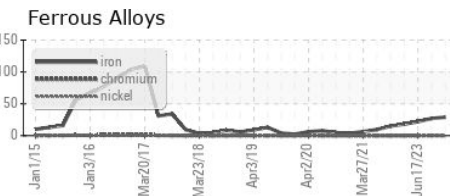
SAMPLE IMAGES		method	limit/base	current	history1	history2
---------------	--	--------	------------	---------	----------	----------

Color

Bottom



GRAPHS



Certificate L2367

Laboratory : WearCheck USA - 501 Madison Ave., Cary, NC 27513
 Sample No. : WC0944839
 Lab Number : 06221159
 Unique Number : 11099356
 Test Package : IND 2 (Additional Tests: PrtCount)

Received : 26 Jun 2024
 Tested : 27 Jun 2024
 Diagnosed : 27 Jun 2024 - Wes Davis

HORMEL FOODS - AUSTIN
 1101 NORTH MAIN ST
 AUSTIN, MN
 US 55912
 Contact: RYAN LOWE
 rslowe@hormel.com
 T: (507)437-5674
 F: (507)437-9805

To discuss this sample report, contact Customer Service at 1-800-237-1369.

* - Denotes test methods that are outside of the ISO 17025 scope of accreditation.

Statements of conformity to specifications are based on the simple acceptance decision rule (JCGM 106:2012)