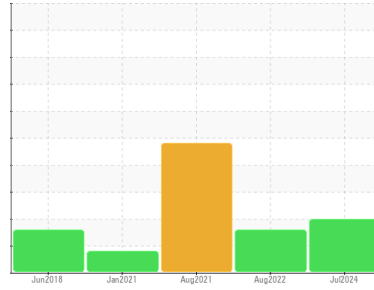




OIL ANALYSIS REPORT

Sample Rating Trend



WATER



Machine Id
KAESER SFC 55 5742486 (S/N 3159)
 Component
Compressor
 Fluid
KAESER SIGMA (OEM) M-460 (--- QTS)

DIAGNOSIS

Recommendation

The filter change at the time of sampling has been noted. We were unable to perform a particle count due to a high concentration of particles present in this sample. We advise that you stop the unit and follow the water drain-off procedure for this component. We recommend an early resample in 500 hours to monitor this condition.

Wear

All component wear rates are normal.

Contamination

Moderate concentration of visible dirt/debris present in the oil. There is a light concentration of water present in the oil.

Fluid Condition

The AN level is acceptable for this fluid. The condition of the oil is acceptable for the time in service.

SAMPLE INFORMATION

	method	limit/base	current	history1	history2
Sample Number	Client Info		KCPA020003	KCP49347	KCP42772
Sample Date	Client Info		03 Jul 2024	18 Aug 2022	09 Aug 2021
Machine Age	hrs	Client Info	50621	38558	29739
Oil Age	hrs	Client Info	0	3927	4571
Oil Changed	Client Info		Not Changed	Not Changed	Not Changed
Sample Status			ABNORMAL	ABNORMAL	ABNORMAL

WEAR METALS

	method	limit/base	current	history1	history2
Iron	ppm	ASTM D5185m >50	0	2	<1
Chromium	ppm	ASTM D5185m >10	0	0	0
Nickel	ppm	ASTM D5185m >3	0	0	0
Titanium	ppm	ASTM D5185m >3	0	0	0
Silver	ppm	ASTM D5185m >2	0	0	0
Aluminum	ppm	ASTM D5185m >10	0	<1	<1
Lead	ppm	ASTM D5185m >10	0	0	0
Copper	ppm	ASTM D5185m >50	7	5	6
Tin	ppm	ASTM D5185m >10	0	0	<1
Antimony	ppm	ASTM D5185m	---	---	0
Vanadium	ppm	ASTM D5185m	0	0	0
Cadmium	ppm	ASTM D5185m	0	0	0

ADDITIVES

	method	limit/base	current	history1	history2
Boron	ppm	ASTM D5185m 0	0	0	17
Barium	ppm	ASTM D5185m 90	<1	0	0
Molybdenum	ppm	ASTM D5185m 0	0	0	0
Manganese	ppm	ASTM D5185m	0	0	<1
Magnesium	ppm	ASTM D5185m 100	3	12	22
Calcium	ppm	ASTM D5185m 0	<1	0	<1
Phosphorus	ppm	ASTM D5185m 0	1	<1	6
Zinc	ppm	ASTM D5185m 0	58	116	38
Sulfur	ppm	ASTM D5185m 23500	20635	17509	17246

CONTAMINANTS

	method	limit/base	current	history1	history2
Silicon	ppm	ASTM D5185m >25	<1	0	<1
Sodium	ppm	ASTM D5185m	3	6	10
Potassium	ppm	ASTM D5185m >20	0	2	4
Water	%	ASTM D6304 >0.05	▲ 0.318	0.016	▲ 0.989
ppm Water	ppm	ASTM D6304 >500	▲ 3180	161.5	▲ 9890

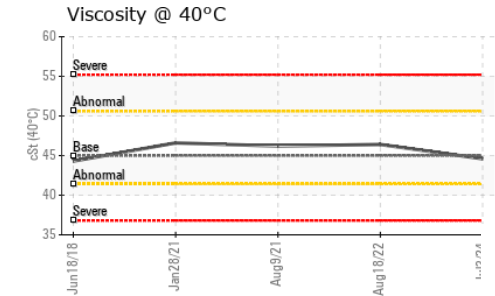
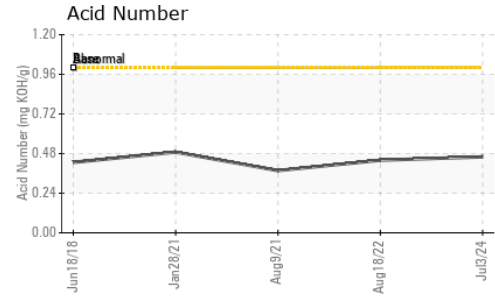
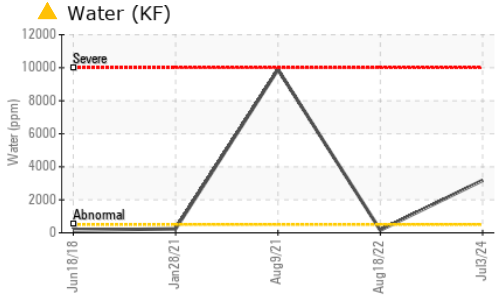
FLUID CLEANLINESS

	method	limit/base	current	history1	history2
Particles >4µm	ASTM D7647		---	12492	---
Particles >6µm	ASTM D7647 >1300		---	▲ 3124	---
Particles >14µm	ASTM D7647 >80		---	▲ 207	---
Particles >21µm	ASTM D7647 >20		---	▲ 43	---
Particles >38µm	ASTM D7647 >4		---	1	---
Particles >71µm	ASTM D7647 >3		---	0	---
Oil Cleanliness	ISO 4406 (c) >--/17/13		---	▲ 21/19/15	---

FLUID DEGRADATION

	method	limit/base	current	history1	history2
Acid Number (AN)	mg KOH/g	ASTM D8045 1.0	0.46	0.44	0.377

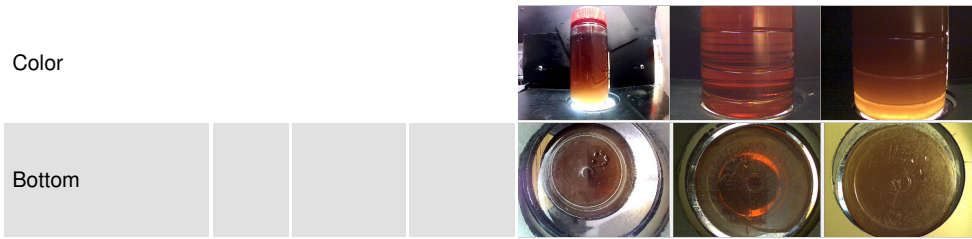
OIL ANALYSIS REPORT



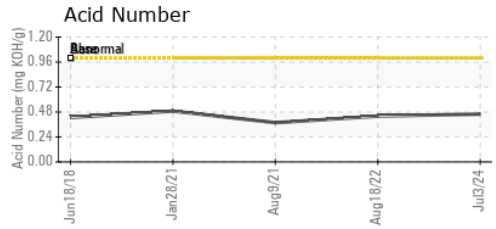
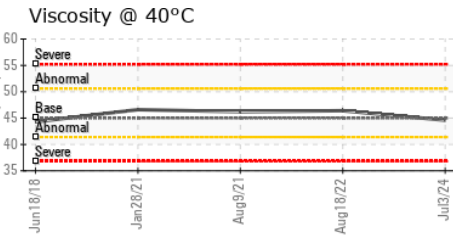
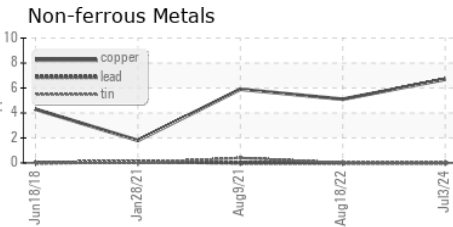
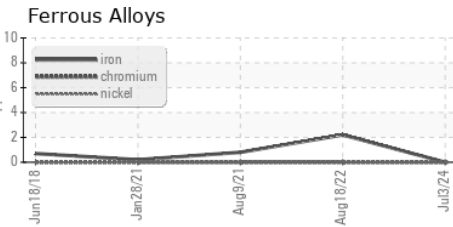
VISUAL	method	limit/base	current	history1	history2
White Metal	scalar	*Visual	NONE	NONE	NONE
Yellow Metal	scalar	*Visual	NONE	NONE	NONE
Precipitate	scalar	*Visual	NONE	NONE	NONE
Silt	scalar	*Visual	NONE	NONE	▲ MODER
Debris	scalar	*Visual	NONE	▲ MODER	LIGHT
Sand/Dirt	scalar	*Visual	NONE	NONE	NONE
Appearance	scalar	*Visual	NORML	NORML	● HAZY
Odor	scalar	*Visual	NORML	NORML	NORML
Emulsified Water	scalar	*Visual	>0.05	▲ 0.2%	NEG
Free Water	scalar	*Visual		NEG	▲ 1.0

FLUID PROPERTIES	method	limit/base	current	history1	history2
Visc @ 40°C	cSt	ASTM D445	45	44.6	46.4

SAMPLE IMAGES	method	limit/base	current	history1	history2
---------------	--------	------------	---------	----------	----------



GRAPHS



Laboratory : WearCheck USA - 501 Madison Ave., Cary, NC 27513
Sample No. : KCPA020003 **Received** : 12 Jul 2024
Lab Number : 06234916 **Tested** : 15 Jul 2024
Unique Number : 11123750 **Diagnosed** : 15 Jul 2024 - Don Baldrige
Test Package : IND 2 (Additional Tests: KF, PrtCount)

HENISE TIRE
 558 E PENN AVE
 CLEONA, PA
 US 17042
 Contact:

To discuss this sample report, contact Customer Service at 1-800-237-1369.

* - Denotes test methods that are outside of the ISO 17025 scope of accreditation.

Statements of conformity to specifications are based on the simple acceptance decision rule (JCGM 106:2012)

T:
F: