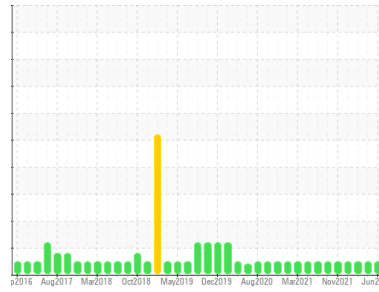




OIL ANALYSIS REPORT

Sample Rating Trend



NORMAL



Area

GP-212

Machine Id

B60751 - PUMP VACUUM BUSCH RA 1000 SOMME 4 (S/N C1518000418)

Component

Pump

Fluid

PETRO CANADA PURITY FG SYNTHETIC 100 (5 GAL)

DIAGNOSIS

Recommendation

Resample at the next service interval to monitor.

Wear

All component wear rates are normal.

Contamination

There is no indication of any contamination in the oil. The amount and size of particulates present in the system are acceptable.

Fluid Condition

The AN level is acceptable for this fluid. The condition of the oil is suitable for further service.

SAMPLE INFORMATION

	method	limit/base	current	history1	history2
Sample Number	Client Info		WC0944833	WC0921423	WC0880540
Sample Date	Client Info		29 Jun 2024	23 Apr 2024	31 Dec 2023
Machine Age	hrs	Client Info	0	0	0
Oil Age	hrs	Client Info	0	0	128
Oil Changed	Client Info		Not Changed	Not Changed	N/A
Sample Status			NORMAL	NORMAL	NORMAL

CONTAMINATION

	method	limit/base	current	history1	history2
Water	WC Method	>.1	NEG	NEG	NEG

WEAR METALS

	method	limit/base	current	history1	history2
Iron	ppm	ASTM D5185m >90	9	4	2
Chromium	ppm	ASTM D5185m >5	<1	0	0
Nickel	ppm	ASTM D5185m >5	<1	0	0
Titanium	ppm	ASTM D5185m >3	<1	0	0
Silver	ppm	ASTM D5185m >3	0	0	0
Aluminum	ppm	ASTM D5185m >7	2	0	0
Lead	ppm	ASTM D5185m >12	<1	0	0
Copper	ppm	ASTM D5185m >30	<1	0	0
Tin	ppm	ASTM D5185m >9	0	0	0
Antimony	ppm	ASTM D5185m	---	---	---
Vanadium	ppm	ASTM D5185m	0	0	0
Cadmium	ppm	ASTM D5185m	<1	0	0

ADDITIVES

	method	limit/base	current	history1	history2
Boron	ppm	ASTM D5185m	0	0	0
Barium	ppm	ASTM D5185m	0	0	0
Molybdenum	ppm	ASTM D5185m	<1	0	0
Manganese	ppm	ASTM D5185m	<1	0	0
Magnesium	ppm	ASTM D5185m	<1	0	0
Calcium	ppm	ASTM D5185m	0	<1	0
Phosphorus	ppm	ASTM D5185m	310	358	451
Zinc	ppm	ASTM D5185m	0	0	0
Sulfur	ppm	ASTM D5185m	911	1193	1015

CONTAMINANTS

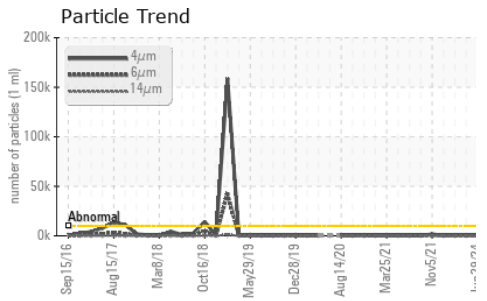
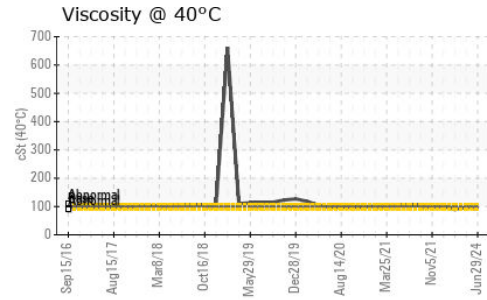
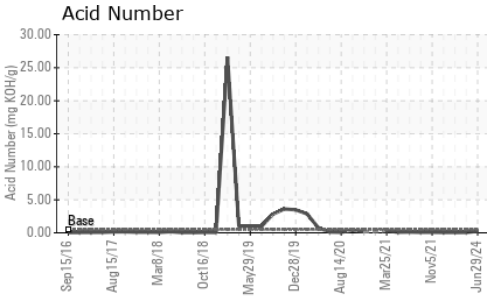
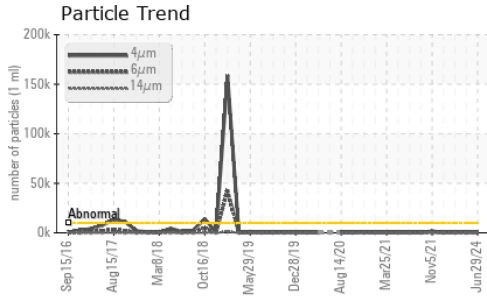
	method	limit/base	current	history1	history2
Silicon	ppm	ASTM D5185m >60	1	<1	<1
Sodium	ppm	ASTM D5185m	5	8	16
Potassium	ppm	ASTM D5185m >20	2	0	3

FLUID CLEANLINESS

	method	limit/base	current	history1	history2
Particles >4µm	ASTM D7647	>10000	458	736	383
Particles >6µm	ASTM D7647	>2500	258	223	159
Particles >14µm	ASTM D7647	>320	91	17	60
Particles >21µm	ASTM D7647	>80	16	4	12
Particles >38µm	ASTM D7647	>20	1	0	1
Particles >71µm	ASTM D7647	>4	1	0	0
Oil Cleanliness	ISO 4406 (c)	>20/18/15	16/15/14	17/15/11	16/14/13



OIL ANALYSIS REPORT



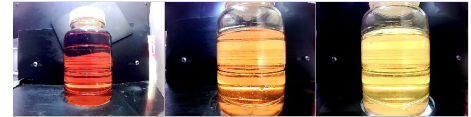
FLUID DEGRADATION	method	limit/base	current	history1	history2	
Acid Number (AN)	mg KOH/g	ASTM D8045	0.5	0.23	0.07	0.05

VISUAL	method	limit/base	current	history1	history2	
White Metal	scalar	*Visual	NONE	NONE	NONE	NONE
Yellow Metal	scalar	*Visual	NONE	NONE	NONE	NONE
Precipitate	scalar	*Visual	NONE	NONE	NONE	NONE
Silt	scalar	*Visual	NONE	NONE	NONE	NONE
Debris	scalar	*Visual	NONE	NONE	NONE	NONE
Sand/Dirt	scalar	*Visual	NONE	NONE	NONE	NONE
Appearance	scalar	*Visual	NORML	NORML	NORML	NORML
Odor	scalar	*Visual	NORML	NORML	NORML	NORML
Emulsified Water	scalar	*Visual	>.1	NEG	NEG	NEG
Free Water	scalar	*Visual		NEG	NEG	NEG

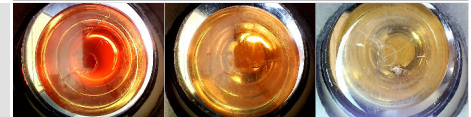
FLUID PROPERTIES	method	limit/base	current	history1	history2	
Visc @ 40°C	cSt	ASTM D445	98.7	91.2	97.5	89.6

SAMPLE IMAGES	method	limit/base	current	history1	history2
---------------	--------	------------	---------	----------	----------

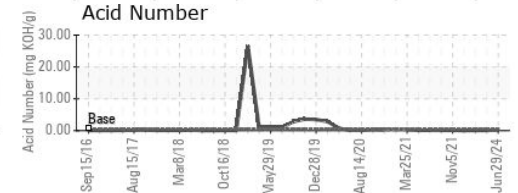
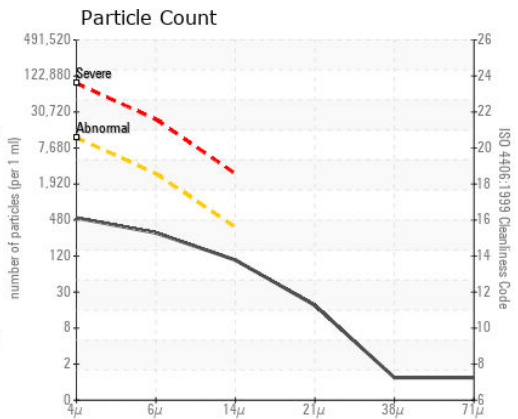
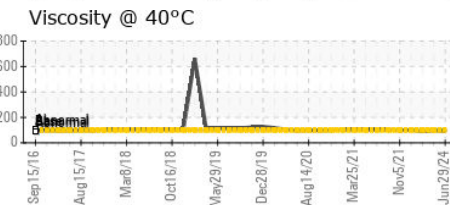
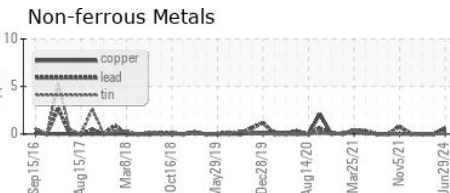
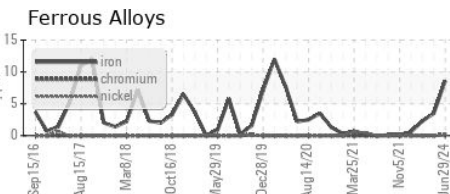
Color



Bottom



GRAPHS



Certificate L2367

Laboratory : WearCheck USA - 501 Madison Ave., Cary, NC 27513
 Sample No. : WC0944833
 Lab Number : **06235917**
 Unique Number : 11124751
 Test Package : IND 2 (Additional Tests: PrtCount)
 Received : 15 Jul 2024
 Tested : 16 Jul 2024
 Diagnosed : 16 Jul 2024 - Don Baldrige

HORMEL FOODS - AUSTIN
 1101 NORTH MAIN ST
 AUSTIN, MN
 US 55912
 Contact: RYAN LOWE
 rslowe@hormel.com
 T: (507)437-5674
 F: (507)437-9805

To discuss this sample report, contact Customer Service at 1-800-237-1369.

* - Denotes test methods that are outside of the ISO 17025 scope of accreditation.

Statements of conformity to specifications are based on the simple acceptance decision rule (JCGM 106:2012)