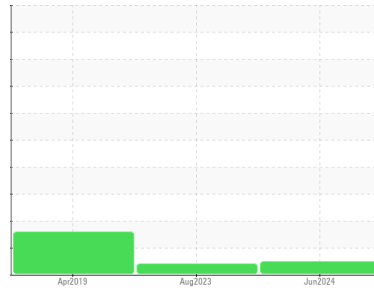




# OIL ANALYSIS REPORT

## Sample Rating Trend



**NORMAL**



Machine Id  
**KAESER AS 20T 4982791 (S/N 1182)**  
 Component  
**Compressor**  
 Fluid  
**KAESER SIGMA (OEM) M-460 (--- GAL)**

### DIAGNOSIS

#### Recommendation

Resample at the next service interval to monitor.

#### Wear

All component wear rates are normal.

#### Contamination

The amount and size of particulates present in the system are acceptable. There is no indication of any contamination in the oil.

#### Fluid Condition

The AN level is acceptable for this fluid. The condition of the oil is suitable for further service.

SAMPLE INFORMATION		method	limit/base	current	history1	history2
Sample Number	Client Info			<b>KCPA020011</b>	KCPA002985	KCP12940
Sample Date	Client Info			<b>27 Jun 2024</b>	12 Aug 2023	08 Apr 2019
Machine Age	hrs	Client Info		<b>16869</b>	16868	5602
Oil Age	hrs	Client Info		<b>0</b>	0	1000
Oil Changed	Client Info			<b>Changed</b>	N/A	Changed
Sample Status				<b>NORMAL</b>	ABNORMAL	ABNORMAL

WEAR METALS		method	limit/base	current	history1	history2
Iron	ppm	ASTM D5185m	>50	<b>&lt;1</b>	<1	2
Chromium	ppm	ASTM D5185m	>10	<b>0</b>	0	0
Nickel	ppm	ASTM D5185m	>3	<b>0</b>	0	0
Titanium	ppm	ASTM D5185m	>3	<b>0</b>	0	0
Silver	ppm	ASTM D5185m	>2	<b>0</b>	0	0
Aluminum	ppm	ASTM D5185m	>10	<b>&lt;1</b>	0	<1
Lead	ppm	ASTM D5185m	>10	<b>0</b>	0	0
Copper	ppm	ASTM D5185m	>50	<b>6</b>	27	14
Tin	ppm	ASTM D5185m	>10	<b>0</b>	0	0
Antimony	ppm	ASTM D5185m		<b>---</b>	---	0
Vanadium	ppm	ASTM D5185m		<b>0</b>	0	0
Cadmium	ppm	ASTM D5185m		<b>0</b>	0	0

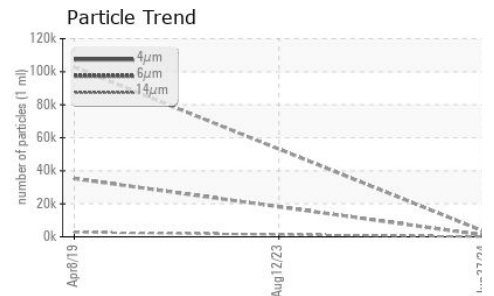
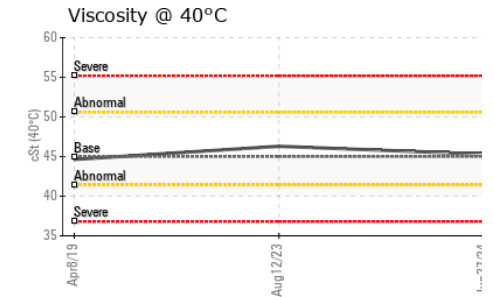
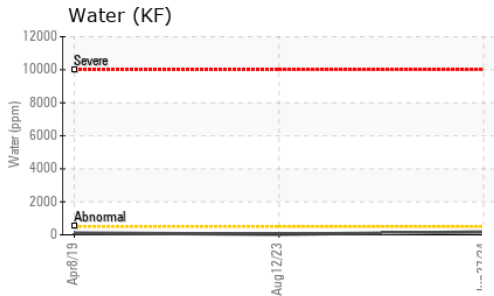
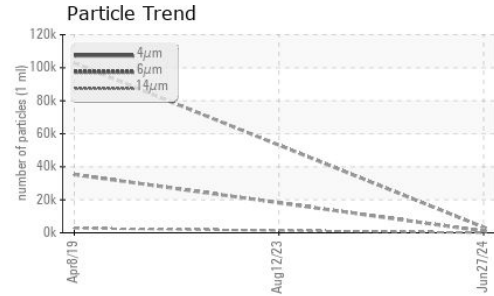
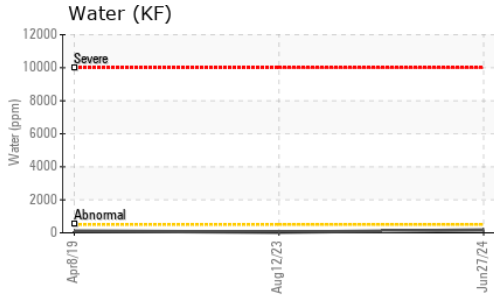
ADDITIVES		method	limit/base	current	history1	history2
Boron	ppm	ASTM D5185m	0	<b>0</b>	0	<1
Barium	ppm	ASTM D5185m	90	<b>48</b>	3	2
Molybdenum	ppm	ASTM D5185m	0	<b>0</b>	0	0
Manganese	ppm	ASTM D5185m		<b>0</b>	0	<1
Magnesium	ppm	ASTM D5185m	100	<b>44</b>	4	32
Calcium	ppm	ASTM D5185m	0	<b>0</b>	0	<1
Phosphorus	ppm	ASTM D5185m	0	<b>0</b>	2	3
Zinc	ppm	ASTM D5185m	0	<b>0</b>	39	23
Sulfur	ppm	ASTM D5185m	23500	<b>21291</b>	20544	24322

CONTAMINANTS		method	limit/base	current	history1	history2
Silicon	ppm	ASTM D5185m	>25	<b>&lt;1</b>	1	<1
Sodium	ppm	ASTM D5185m		<b>5</b>	0	14
Potassium	ppm	ASTM D5185m	>20	<b>1</b>	<1	2
Water	%	ASTM D6304	>0.05	<b>0.017</b>	0.003	0.011
ppm Water	ppm	ASTM D6304	>500	<b>172</b>	34.7	110

FLUID CLEANLINESS		method	limit/base	current	history1	history2
Particles >4µm		ASTM D7647		<b>3367</b>	---	102852
Particles >6µm		ASTM D7647	>1300	<b>1019</b>	---	▲ 35325
Particles >14µm		ASTM D7647	>80	<b>36</b>	---	▲ 2741
Particles >21µm		ASTM D7647	>20	<b>7</b>	---	▲ 804
Particles >38µm		ASTM D7647	>4	<b>1</b>	---	▲ 43
Particles >71µm		ASTM D7647	>3	<b>0</b>	---	2
Oil Cleanliness		ISO 4406 (c)	>--/17/13	<b>19/17/12</b>	---	▲ 22/19

FLUID DEGRADATION		method	limit/base	current	history1	history2
Acid Number (AN)	mg KOH/g	ASTM D8045	1.0	<b>0.39</b>	0.44	0.329

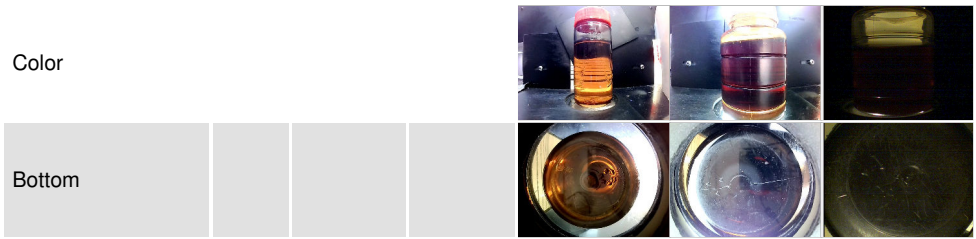
# OIL ANALYSIS REPORT



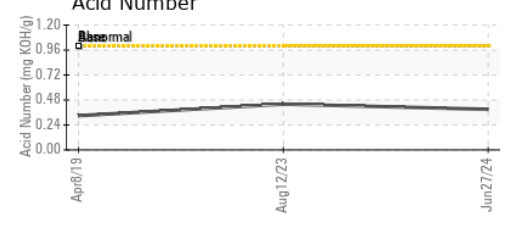
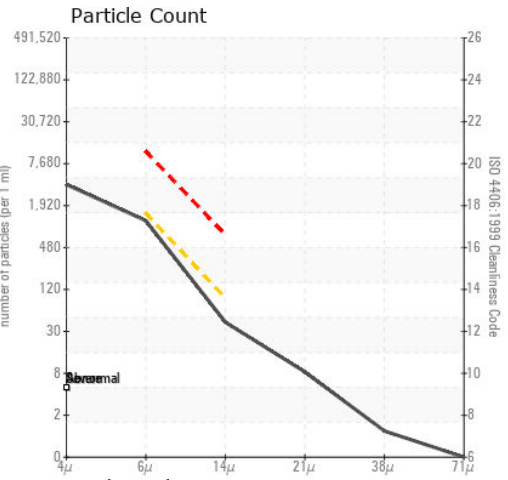
VISUAL	method	limit/base	current	history1	history2
White Metal	scalar	*Visual	NONE	NONE	NONE
Yellow Metal	scalar	*Visual	NONE	NONE	NONE
Precipitate	scalar	*Visual	NONE	NONE	NONE
Silt	scalar	*Visual	NONE	NONE	NONE
Debris	scalar	*Visual	NONE	NONE	NONE
Sand/Dirt	scalar	*Visual	NONE	NONE	NONE
Appearance	scalar	*Visual	NORML	NORML	NORML
Odor	scalar	*Visual	NORML	NORML	NORML
Emulsified Water	scalar	*Visual	>0.05	NEG	NEG
Free Water	scalar	*Visual		NEG	NEG

FLUID PROPERTIES	method	limit/base	current	history1	history2
Visc @ 40°C	cSt	ASTM D445	45	45.3	46.3

SAMPLE IMAGES	method	limit/base	current	history1	history2
---------------	--------	------------	---------	----------	----------



## GRAPHS



**Laboratory** : WearCheck USA - 501 Madison Ave., Cary, NC 27513  
**Sample No.** : KCPA020011 **Received** : 15 Jul 2024  
**Lab Number** : 06235991 **Tested** : 16 Jul 2024  
**Unique Number** : 11124825 **Diagnosed** : 17 Jul 2024 - Don Baldrige  
**Test Package** : IND 2 ( Additional Tests: KF, PrtCount )

**CARMAX 07112**  
 8400 ANDERSON BLVD  
 FORT WORTH, TX  
 US 76120  
 Contact: Service Manager

To discuss this sample report, contact Customer Service at 1-800-237-1369.

\* - Denotes test methods that are outside of the ISO 17025 scope of accreditation.

Statements of conformity to specifications are based on the simple acceptance decision rule (JCGM 106:2012)

T:  
F: