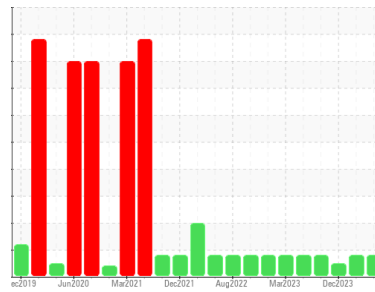




OIL ANALYSIS REPORT

Sample Rating Trend



Machine Id
CUTI_U2220 CUTI_U2220_P2220
 Component
Drive End Pump
 Fluid
ROYAL PURPLE SYNFILM GT 32 (--- GAL)

DIAGNOSIS

Recommendation

No corrective action is recommended at this time. Resample at the next service interval to monitor.

Wear

The copper level is abnormal. All other component wear rates are normal.

Contamination

The water content is negligible. There is no indication of any contamination in the oil.

Fluid Condition

The AN level is acceptable for this fluid. The condition of the oil is suitable for further service.

SAMPLE INFORMATION

method	limit/base	current	history1	history2
Sample Number	Client Info	RP0043840	RP0029103	RP0025781
Sample Date	Client Info	27 Jun 2024	19 Mar 2024	26 Dec 2023
Machine Age	hrs	Client Info	0	0
Oil Age	hrs	Client Info	0	0
Oil Changed	Client Info	N/A	N/A	N/A
Sample Status		ABNORMAL	ABNORMAL	NORMAL

WEAR METALS

method	limit/base	current	history1	history2
Iron ppm	ASTM D5185m >75	<1	<1	17
Chromium ppm	ASTM D5185m >5	0	<1	0
Nickel ppm	ASTM D5185m	0	<1	0
Titanium ppm	ASTM D5185m	0	<1	<1
Silver ppm	ASTM D5185m	0	0	0
Aluminum ppm	ASTM D5185m >5	0	1	0
Lead ppm	ASTM D5185m >10	0	1	<1
Copper ppm	ASTM D5185m >15	▲ 15	▲ 16	4
Tin ppm	ASTM D5185m	<1	2	2
Vanadium ppm	ASTM D5185m	0	<1	<1
Cadmium ppm	ASTM D5185m	0	<1	0

ADDITIVES

method	limit/base	current	history1	history2
Boron ppm	ASTM D5185m	0	0	0
Barium ppm	ASTM D5185m	0	<1	<1
Molybdenum ppm	ASTM D5185m	0	<1	0
Manganese ppm	ASTM D5185m	0	<1	<1
Magnesium ppm	ASTM D5185m	62	79	84
Calcium ppm	ASTM D5185m	0	6	2
Phosphorus ppm	ASTM D5185m	0	19	0
Zinc ppm	ASTM D5185m	0	2	0

CONTAMINANTS

method	limit/base	current	history1	history2
Silicon ppm	ASTM D5185m >20	<1	2	0
Sodium ppm	ASTM D5185m	2	0	2
Potassium ppm	ASTM D5185m >20	<1	<1	0
Water %	ASTM D6304 >.1	0.029	0.006	0.014
ppm Water	ASTM D6304 >1000	296	65	148

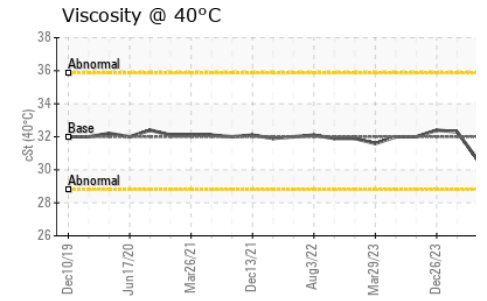
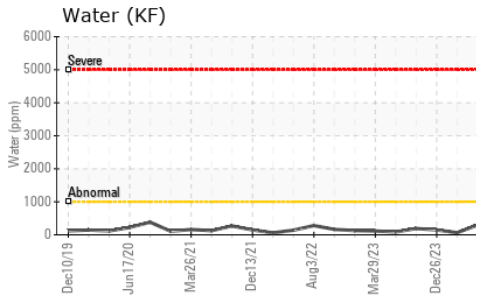
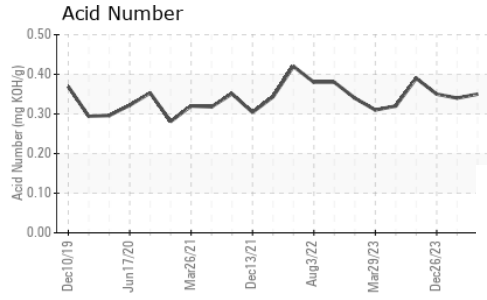
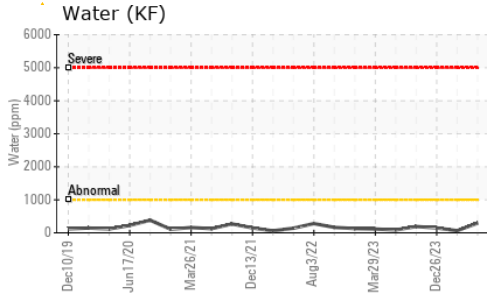
FLUID DEGRADATION

method	limit/base	current	history1	history2
Acid Number (AN) mg KOH/g	ASTM D8045	0.35	0.34	0.35

VISUAL

method	limit/base	current	history1	history2
White Metal scalar	*Visual NONE	NONE	NONE	NONE
Yellow Metal scalar	*Visual NONE	NONE	NONE	NONE
Precipitate scalar	*Visual NONE	NONE	NONE	NONE
Silt scalar	*Visual NONE	NONE	NONE	NONE
Debris scalar	*Visual NONE	LIGHT	NONE	LIGHT
Sand/Dirt scalar	*Visual NONE	NONE	NONE	NONE
Appearance scalar	*Visual NORML	NORML	NORML	NORML
Odor scalar	*Visual NORML	NORML	NORML	NORML
Emulsified Water scalar	*Visual >.1	NEG	NEG	NEG
Free Water scalar	*Visual	NEG	NEG	NEG

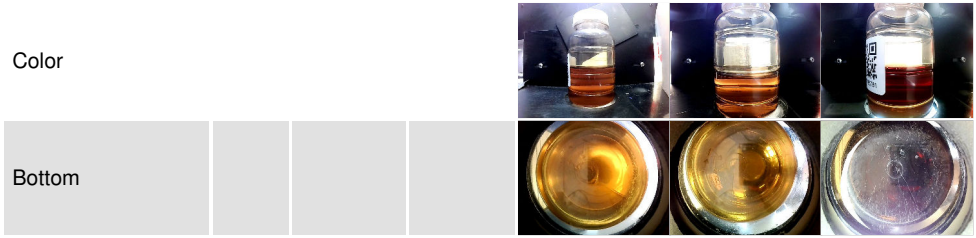
OIL ANALYSIS REPORT



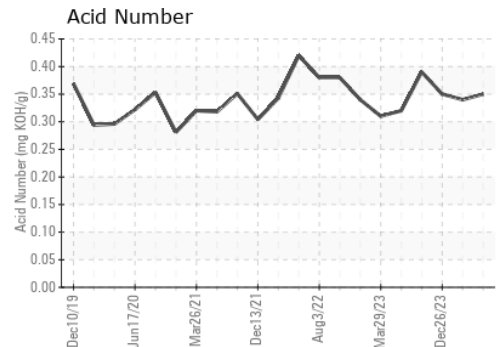
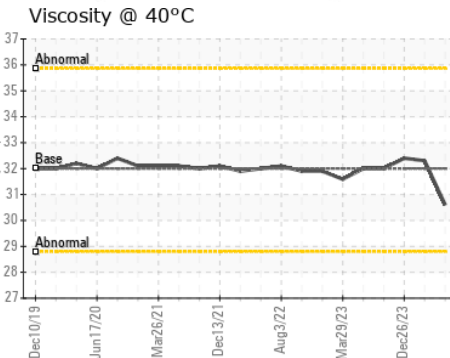
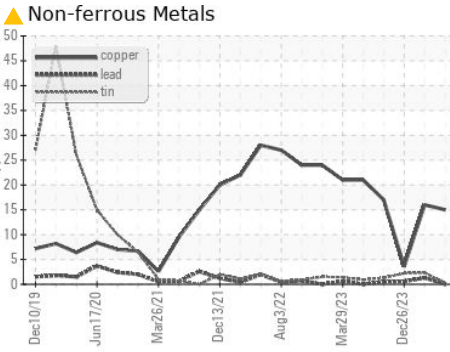
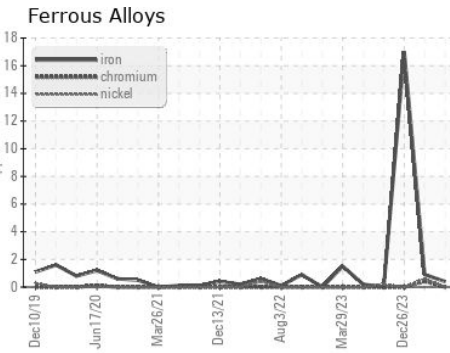
FLUID PROPERTIES

method	limit/base	current	history1	history2		
Visc @ 40°C	cSt	ASTM D445	32	30.6	32.3	32.4

SAMPLE IMAGES



GRAPHS



Certificate L2367

Laboratory : WearCheck USA - 501 Madison Ave., Cary, NC 27513
Sample No. : RP0043840
Lab Number : 06236122
Unique Number : 11124956
Test Package : IND 2
Received : 15 Jul 2024
Tested : 16 Jul 2024
Diagnosed : 17 Jul 2024 - Don Baldridge

ENERGY TRANSFER - UTCIA
 7077 19 MILE ROAD
 STERLING HEIGHTS, MI
 US 48317
 Contact: SCOTT VERHELLE

To discuss this sample report, contact Customer Service at 1-800-237-1369.

* - Denotes test methods that are outside of the ISO 17025 scope of accreditation.

Statements of conformity to specifications are based on the simple acceptance decision rule (JCGM 106:2012)

T: (313)580-0267

F: