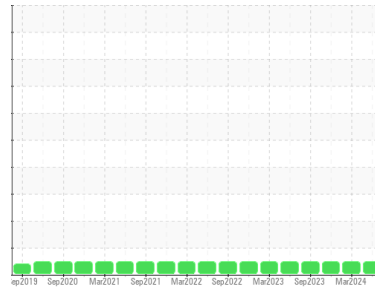




# OIL ANALYSIS REPORT

## Sample Rating Trend



**NORMAL**



Machine Id  
**RCHS\_U2120 RCHS\_U2120\_M2120**  
 Component  
**Non-Drive End Bearing**  
 Fluid  
**ROYAL PURPLE SYNFILM GT 32 (--- GAL)**

### DIAGNOSIS

#### Recommendation

Resample at the next service interval to monitor.

#### Wear

All component wear rates are normal.

#### Contamination

The water content is negligible. There is no indication of any contamination in the oil.

#### Fluid Condition

The AN level is acceptable for this fluid. The condition of the oil is suitable for further service.

### SAMPLE INFORMATION

method	limit/base	current	history1	history2
Sample Number	Client Info	<b>RP0043867</b>	RP0029023	RP0025837
Sample Date	Client Info	<b>27 Jun 2024</b>	18 Mar 2024	26 Dec 2023
Machine Age	hrs Client Info	<b>0</b>	0	0
Oil Age	hrs Client Info	<b>0</b>	0	0
Oil Changed	Client Info	<b>N/A</b>	N/A	N/A
Sample Status		<b>NORMAL</b>	NORMAL	NORMAL

### WEAR METALS

method	limit/base	current	history1	history2
Iron	ppm ASTM D5185m >20	<b>0</b>	3	0
Chromium	ppm ASTM D5185m >20	<b>0</b>	<1	0
Nickel	ppm ASTM D5185m >20	<b>0</b>	<1	0
Titanium	ppm ASTM D5185m	<b>0</b>	<1	<1
Silver	ppm ASTM D5185m	<b>0</b>	0	0
Aluminum	ppm ASTM D5185m >20	<b>0</b>	1	0
Lead	ppm ASTM D5185m >20	<b>&lt;1</b>	3	1
Copper	ppm ASTM D5185m >20	<b>0</b>	1	<1
Tin	ppm ASTM D5185m >20	<b>0</b>	1	<1
Vanadium	ppm ASTM D5185m	<b>0</b>	<1	<1
Cadmium	ppm ASTM D5185m	<b>0</b>	<1	0

### ADDITIVES

method	limit/base	current	history1	history2
Boron	ppm ASTM D5185m	<b>0</b>	0	0
Barium	ppm ASTM D5185m	<b>0</b>	<1	0
Molybdenum	ppm ASTM D5185m	<b>0</b>	<1	0
Manganese	ppm ASTM D5185m	<b>0</b>	<1	<1
Magnesium	ppm ASTM D5185m	<b>65</b>	84	79
Calcium	ppm ASTM D5185m	<b>0</b>	6	2
Phosphorus	ppm ASTM D5185m	<b>0</b>	6	0
Zinc	ppm ASTM D5185m	<b>0</b>	6	<1

### CONTAMINANTS

method	limit/base	current	history1	history2
Silicon	ppm ASTM D5185m >15	<b>1</b>	3	<1
Sodium	ppm ASTM D5185m	<b>2</b>	0	2
Potassium	ppm ASTM D5185m >20	<b>&lt;1</b>	1	0
Water	% ASTM D6304 >0.05	<b>0.030</b>	0.010	0.017
ppm Water	ppm ASTM D6304 >500	<b>304</b>	105	178

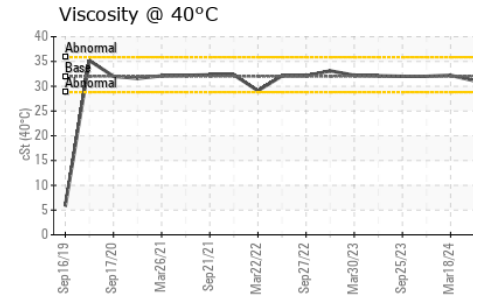
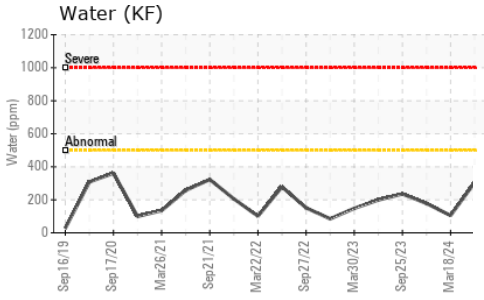
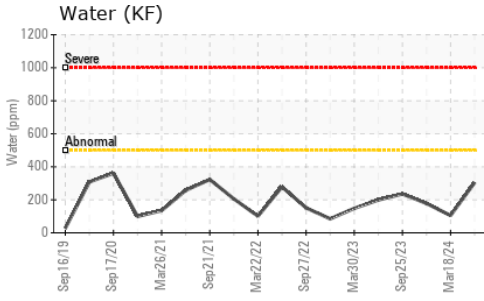
### FLUID DEGRADATION

method	limit/base	current	history1	history2
Acid Number (AN)	mg KOH/g ASTM D8045	<b>0.37</b>	0.36	0.34

### VISUAL

method	limit/base	current	history1	history2
White Metal	scalar *Visual NONE	<b>NONE</b>	NONE	NONE
Yellow Metal	scalar *Visual NONE	<b>NONE</b>	NONE	NONE
Precipitate	scalar *Visual NONE	<b>NONE</b>	NONE	NONE
Silt	scalar *Visual NONE	<b>NONE</b>	NONE	NONE
Debris	scalar *Visual NONE	<b>NONE</b>	NONE	LIGHT
Sand/Dirt	scalar *Visual NONE	<b>NONE</b>	NONE	NONE
Appearance	scalar *Visual NORML	<b>NORML</b>	NORML	NORML
Odor	scalar *Visual NORML	<b>NORML</b>	NORML	NORML
Emulsified Water	scalar *Visual >0.05	<b>NEG</b>	NEG	NEG
Free Water	scalar *Visual	<b>NEG</b>	NEG	NEG

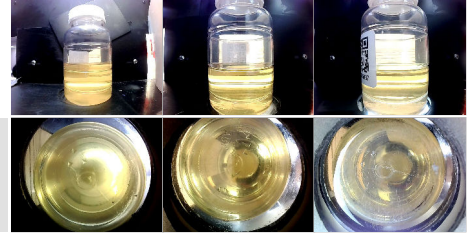
# OIL ANALYSIS REPORT



FLUID PROPERTIES		method	limit/base	current	history1	history2
Visc @ 40°C	cSt	ASTM D445	32	<b>31.1</b>	32.2	32.0

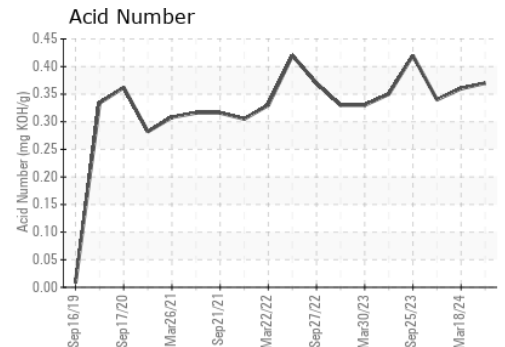
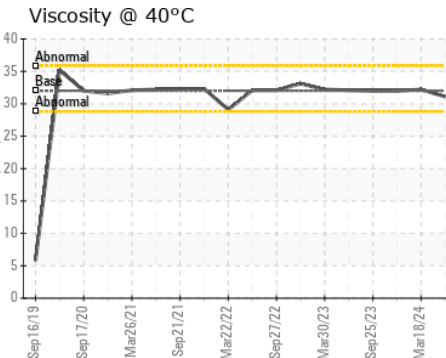
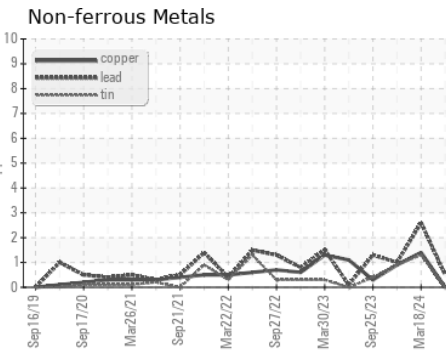
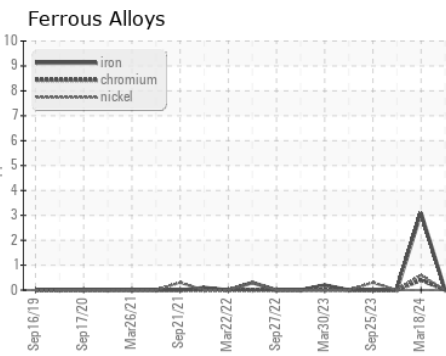
SAMPLE IMAGES		method	limit/base	current	history1	history2
---------------	--	--------	------------	---------	----------	----------

Color



Bottom

## GRAPHS



Certificate L2367

**Laboratory** : WearCheck USA - 501 Madison Ave., Cary, NC 27513  
**Sample No.** : RP0043867  
**Lab Number** : **06236130**  
**Unique Number** : 11124964  
**Test Package** : IND 2

**Received** : 15 Jul 2024  
**Tested** : 16 Jul 2024  
**Diagnosed** : 17 Jul 2024 - Don Baldrige

**ENERGY TRANSFER - ROCHESTER**  
 1406 EAST AVON ROAD  
 ROCHESTER, MI  
 US 48307  
 Contact: SCOTT VERHELLE

To discuss this sample report, contact Customer Service at 1-800-237-1369.

\* - Denotes test methods that are outside of the ISO 17025 scope of accreditation.

Statements of conformity to specifications are based on the simple acceptance decision rule (JCGM 106:2012)

T: (313)580-0267

F: