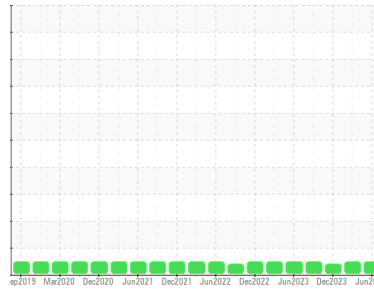




# OIL ANALYSIS REPORT

## Sample Rating Trend



Machine Id  
**CMAR\_B2 CMAR\_B2\_M2**  
 Component  
**Non-Drive End Bearing**  
 Fluid  
**ROYAL PURPLE SYNFILM GT 32 (--- GAL)**

### DIAGNOSIS

- Recommendation**  
Resample at the next service interval to monitor.
- Wear**  
All component wear rates are normal.
- Contamination**  
The water content is negligible. There is no indication of any contamination in the oil.
- Fluid Condition**  
The AN level is acceptable for this fluid. The condition of the oil is suitable for further service.

| SAMPLE INFORMATION |             | method      | limit/base | current            | history1    | history2    |
|--------------------|-------------|-------------|------------|--------------------|-------------|-------------|
| Sample Number      | Client Info |             |            | <b>RP0043872</b>   | RP0029034   | RP0021293   |
| Sample Date        | Client Info |             |            | <b>28 Jun 2024</b> | 20 Mar 2024 | 27 Dec 2023 |
| Machine Age        | hrs         | Client Info |            | <b>0</b>           | 0           | 0           |
| Oil Age            | hrs         | Client Info |            | <b>0</b>           | 0           | 0           |
| Oil Changed        | Client Info |             |            | <b>N/A</b>         | N/A         | N/A         |
| Sample Status      |             |             |            | <b>NORMAL</b>      | NORMAL      | ABNORMAL    |

| WEAR METALS |     | method      | limit/base | current      | history1 | history2 |
|-------------|-----|-------------|------------|--------------|----------|----------|
| Iron        | ppm | ASTM D5185m | >20        | <b>4</b>     | 7        | 9        |
| Chromium    | ppm | ASTM D5185m | >20        | <b>0</b>     | <1       | <1       |
| Nickel      | ppm | ASTM D5185m | >20        | <b>0</b>     | <1       | 0        |
| Titanium    | ppm | ASTM D5185m |            | <b>0</b>     | <1       | <1       |
| Silver      | ppm | ASTM D5185m |            | <b>0</b>     | 0        | 0        |
| Aluminum    | ppm | ASTM D5185m | >20        | <b>&lt;1</b> | 1        | <1       |
| Lead        | ppm | ASTM D5185m | >20        | <b>0</b>     | <1       | 0        |
| Copper      | ppm | ASTM D5185m | >20        | <b>0</b>     | 1        | <1       |
| Tin         | ppm | ASTM D5185m | >20        | <b>0</b>     | <1       | <1       |
| Vanadium    | ppm | ASTM D5185m |            | <b>0</b>     | <1       | <1       |
| Cadmium     | ppm | ASTM D5185m |            | <b>0</b>     | <1       | 0        |

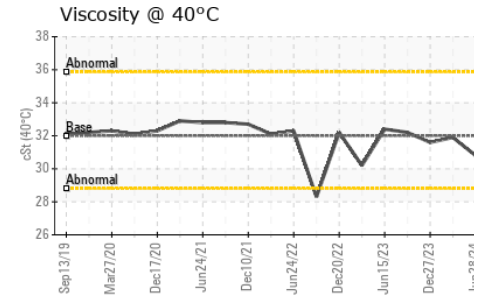
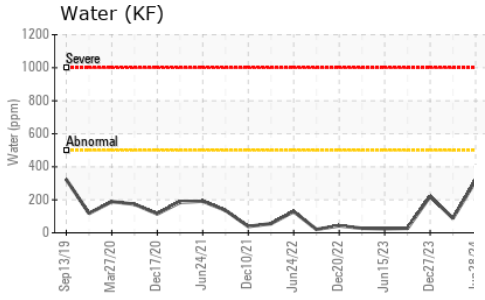
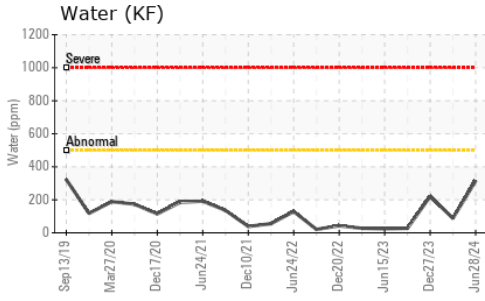
| ADDITIVES  |     | method      | limit/base | current   | history1 | history2 |
|------------|-----|-------------|------------|-----------|----------|----------|
| Boron      | ppm | ASTM D5185m |            | <b>0</b>  | 0        | 0        |
| Barium     | ppm | ASTM D5185m |            | <b>0</b>  | 2        | 2        |
| Molybdenum | ppm | ASTM D5185m |            | <b>0</b>  | <1       | 0        |
| Manganese  | ppm | ASTM D5185m |            | <b>0</b>  | <1       | <1       |
| Magnesium  | ppm | ASTM D5185m |            | <b>60</b> | 82       | 82       |
| Calcium    | ppm | ASTM D5185m |            | <b>0</b>  | 5        | 1        |
| Phosphorus | ppm | ASTM D5185m |            | <b>0</b>  | 8        | 0        |
| Zinc       | ppm | ASTM D5185m |            | <b>0</b>  | 2        | 0        |

| CONTAMINANTS |     | method      | limit/base | current      | history1 | history2 |
|--------------|-----|-------------|------------|--------------|----------|----------|
| Silicon      | ppm | ASTM D5185m | >15        | <b>15</b>    | 16       | 12       |
| Sodium       | ppm | ASTM D5185m |            | <b>4</b>     | <1       | 5        |
| Potassium    | ppm | ASTM D5185m | >20        | <b>&lt;1</b> | 1        | 0        |
| Water        | %   | ASTM D6304  | >0.05      | <b>0.031</b> | 0.008    | 0.022    |
| ppm Water    | ppm | ASTM D6304  | >500       | <b>315</b>   | 88       | 221      |

| FLUID DEGRADATION |          | method     | limit/base | current     | history1 | history2 |
|-------------------|----------|------------|------------|-------------|----------|----------|
| Acid Number (AN)  | mg KOH/g | ASTM D8045 |            | <b>0.34</b> | 0.34     | 0.37     |

| VISUAL           |        | method  | limit/base | current      | history1 | history2 |
|------------------|--------|---------|------------|--------------|----------|----------|
| White Metal      | scalar | *Visual | NONE       | <b>NONE</b>  | NONE     | NONE     |
| Yellow Metal     | scalar | *Visual | NONE       | <b>NONE</b>  | NONE     | NONE     |
| Precipitate      | scalar | *Visual | NONE       | <b>NONE</b>  | NONE     | NONE     |
| Silt             | scalar | *Visual | NONE       | <b>NONE</b>  | NONE     | NONE     |
| Debris           | scalar | *Visual | NONE       | <b>NONE</b>  | NONE     | ▲ MODER  |
| Sand/Dirt        | scalar | *Visual | NONE       | <b>NONE</b>  | NONE     | NONE     |
| Appearance       | scalar | *Visual | NORML      | <b>NORML</b> | NORML    | NORML    |
| Odor             | scalar | *Visual | NORML      | <b>NORML</b> | NORML    | NORML    |
| Emulsified Water | scalar | *Visual | >0.05      | <b>NEG</b>   | NEG      | NEG      |
| Free Water       | scalar | *Visual |            | <b>NEG</b>   | NEG      | NEG      |

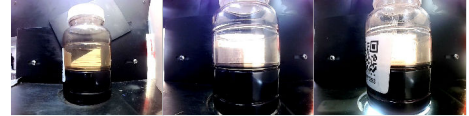
# OIL ANALYSIS REPORT



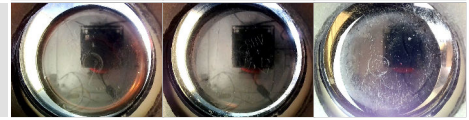
| FLUID PROPERTIES |     | method    | limit/base | current     | history1 | history2 |
|------------------|-----|-----------|------------|-------------|----------|----------|
| Visc @ 40°C      | cSt | ASTM D445 | 32         | <b>30.8</b> | 31.9     | 31.6     |

| SAMPLE IMAGES |  | method | limit/base | current | history1 | history2 |
|---------------|--|--------|------------|---------|----------|----------|
|---------------|--|--------|------------|---------|----------|----------|

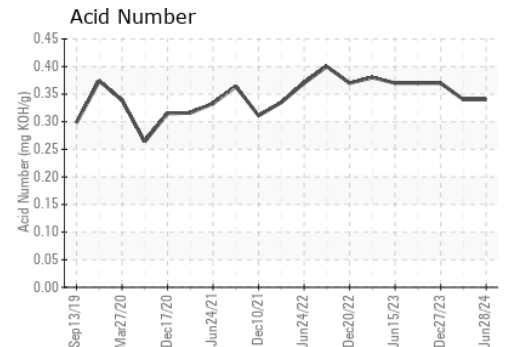
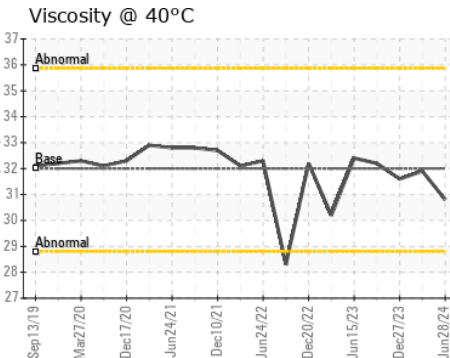
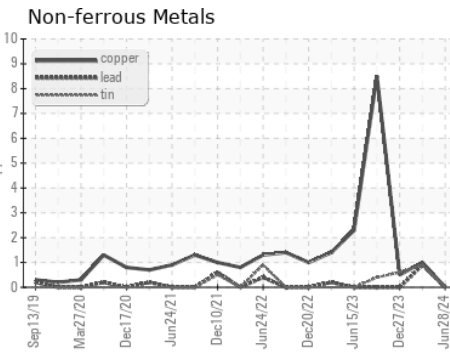
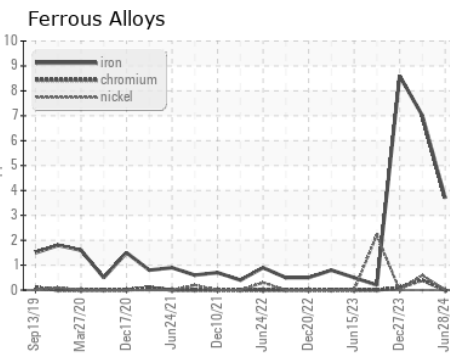
Color



Bottom



## GRAPHS



Certificate L2367

**Laboratory** : WearCheck USA - 501 Madison Ave., Cary, NC 27513  
**Sample No.** : RP0043872  
**Lab Number** : **06236132**  
**Unique Number** : 11124966  
**Test Package** : IND 2

**Received** : 15 Jul 2024  
**Tested** : 16 Jul 2024  
**Diagnosed** : 17 Jul 2024 - Don Baldrige

**ENERGY TRANSFER - MARYSVILLE**  
 250 MURPHY DRIVE  
 ST. CLAIR, MI  
 US 48079  
 Contact: SCOTT VERHELLE

To discuss this sample report, contact Customer Service at 1-800-237-1369.

\* - Denotes test methods that are outside of the ISO 17025 scope of accreditation.

Statements of conformity to specifications are based on the simple acceptance decision rule (JCGM 106:2012)

T: (313)580-0267

F: