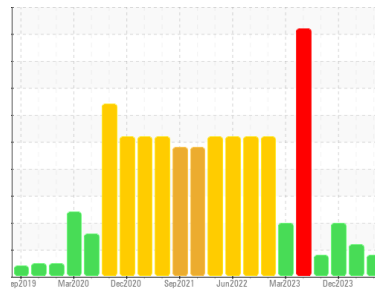




OIL ANALYSIS REPORT

Sample Rating Trend



SEDIMENT



Machine Id
CUTI_U2120 CUTI_U2120_P2120

Component
Non-Drive End Pump

Fluid
ROYAL PURPLE SYNFILM GT 32 (--- GAL)

DIAGNOSIS

Recommendation

We recommend you service the filters on this component if applicable. Resample at the next service interval to monitor.

Wear

All component wear rates are normal.

Contamination

There is a moderate amount of visible silt present in the sample.

Fluid Condition

The AN level is acceptable for this fluid. The condition of the oil is suitable for further service.

SAMPLE INFORMATION

method	limit/base	current	history1	history2
Sample Number	Client Info	RP0043837	RP0029018	RP0025785
Sample Date	Client Info	27 Jun 2024	19 Mar 2024	26 Dec 2023
Machine Age	hrs	Client Info	0	0
Oil Age	hrs	Client Info	0	0
Oil Changed	Client Info	N/A	N/A	N/A
Sample Status		ABNORMAL	ABNORMAL	ABNORMAL

WEAR METALS

method	limit/base	current	history1	history2	
Iron	ppm	ASTM D5185m >75	25	▲ 109	▲ 116
Chromium	ppm	ASTM D5185m >5	0	1	<1
Nickel	ppm	ASTM D5185m	0	<1	0
Titanium	ppm	ASTM D5185m	0	<1	<1
Silver	ppm	ASTM D5185m	0	0	0
Aluminum	ppm	ASTM D5185m >5	0	1	<1
Lead	ppm	ASTM D5185m >10	0	2	0
Copper	ppm	ASTM D5185m >15	3	6	5
Tin	ppm	ASTM D5185m	0	4	4
Vanadium	ppm	ASTM D5185m	0	<1	<1
Cadmium	ppm	ASTM D5185m	0	<1	0

ADDITIVES

method	limit/base	current	history1	history2	
Boron	ppm	ASTM D5185m	0	0	0
Barium	ppm	ASTM D5185m	0	<1	0
Molybdenum	ppm	ASTM D5185m	0	<1	0
Manganese	ppm	ASTM D5185m	0	2	1
Magnesium	ppm	ASTM D5185m	20	98	73
Calcium	ppm	ASTM D5185m	0	8	3
Phosphorus	ppm	ASTM D5185m	0	13	3
Zinc	ppm	ASTM D5185m	0	2	0

CONTAMINANTS

method	limit/base	current	history1	history2	
Silicon	ppm	ASTM D5185m >20	2	5	4
Sodium	ppm	ASTM D5185m	1	0	2
Potassium	ppm	ASTM D5185m >20	<1	<1	0
Water	%	ASTM D6304 >.1	0.022	0.015	0.012
ppm Water	ppm	ASTM D6304 >1000	227	156	127

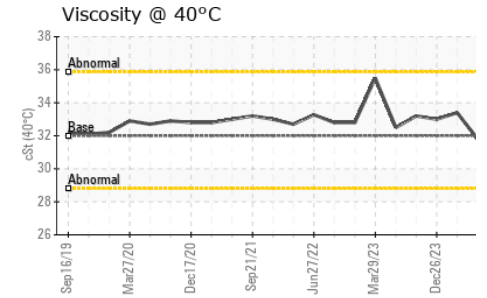
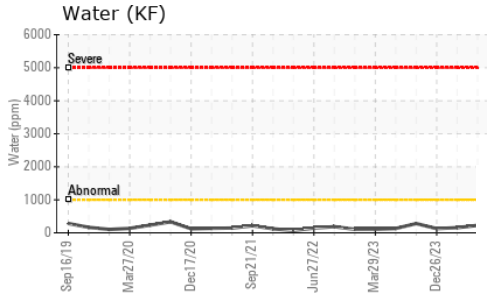
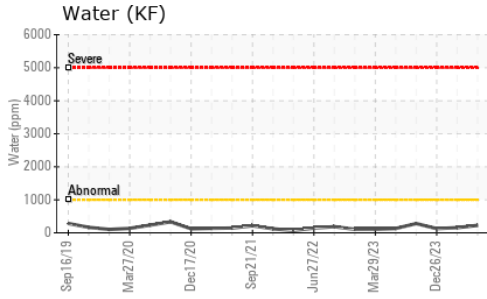
FLUID DEGRADATION

method	limit/base	current	history1	history2	
Acid Number (AN)	mg KOH/g	ASTM D8045	0.32	0.37	0.32

VISUAL

method	limit/base	current	history1	history2	
White Metal	scalar	*Visual NONE	NONE	NONE	NONE
Yellow Metal	scalar	*Visual NONE	NONE	NONE	NONE
Precipitate	scalar	*Visual NONE	NONE	NONE	NONE
Silt	scalar	*Visual NONE	▲ MODER	NONE	▲ MODER
Debris	scalar	*Visual NONE	NONE	▲ MODER	▲ MODER
Sand/Dirt	scalar	*Visual NONE	NONE	NONE	NONE
Appearance	scalar	*Visual NORML	NORML	NORML	NORML
Odor	scalar	*Visual NORML	NORML	NORML	NORML
Emulsified Water	scalar	*Visual >.1	NEG	NEG	NEG
Free Water	scalar	*Visual	NEG	NEG	NEG

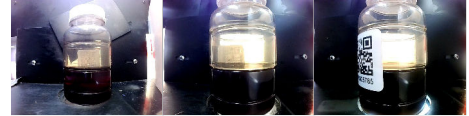
OIL ANALYSIS REPORT



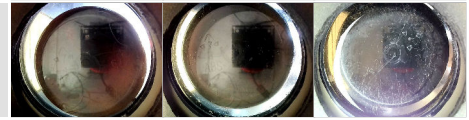
FLUID PROPERTIES	method	limit/base	current	history1	history2
Visc @ 40°C	cSt	ASTM D445 32	31.8	33.4	33.0

SAMPLE IMAGES	method	limit/base	current	history1	history2
---------------	--------	------------	---------	----------	----------

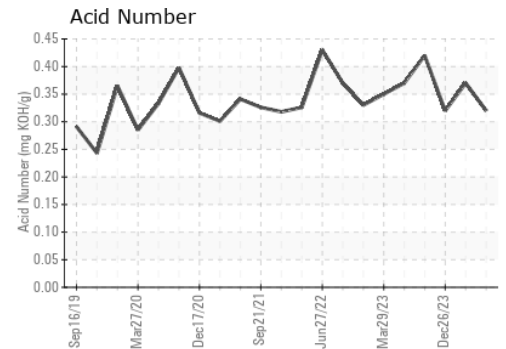
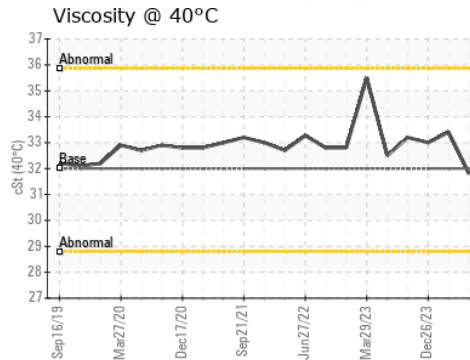
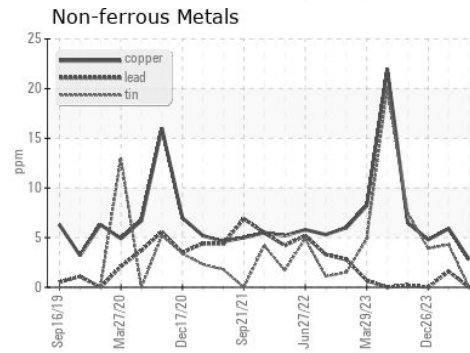
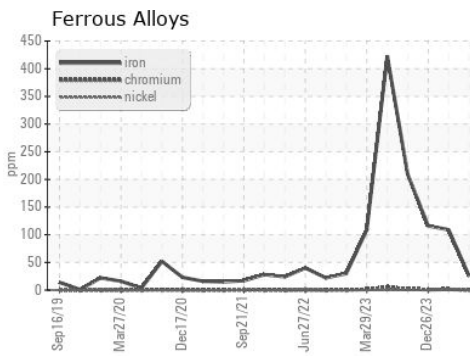
Color



Bottom



GRAPHS



Certificate L2367

Laboratory : WearCheck USA - 501 Madison Ave., Cary, NC 27513
Sample No. : RP0043837
Lab Number : **06236142**
Unique Number : 11124976
Test Package : IND 2

Received : 15 Jul 2024
Tested : 16 Jul 2024
Diagnosed : 17 Jul 2024 - Don Baldrige

ENERGY TRANSFER - UTCIA
 7077 19 MILE ROAD
 STERLING HEIGHTS, MI
 US 48317
 Contact: SCOTT VERHELLE

To discuss this sample report, contact Customer Service at 1-800-237-1369.

* - Denotes test methods that are outside of the ISO 17025 scope of accreditation.

Statements of conformity to specifications are based on the simple acceptance decision rule (JCGM 106:2012)

T: (313)580-0267

F: