

Area

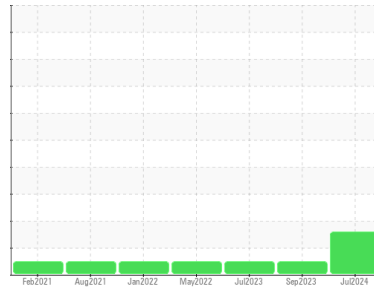
PALEXTRA 44

Machine Id

SULLIVAN PALATEK 1612080009 - MASTERBRAND CABINETS

Component

Compressor



DIAGNOSIS

Recommendation

Oil and filter change at the time of sampling has been noted. Resample at the next service interval to monitor.

Wear

All component wear rates are normal.

Contamination

Moderate concentration of visible dirt/debris present in the oil. There is a light concentration of water present in the oil.

Fluid Condition

The AN level is acceptable for this fluid. The condition of the oil is suitable for further service.

| SAMPLE INFORMATION | | method | limit/base | current | history1 | history2 |
|--------------------|-------------|-------------|------------|--------------------|-------------|-------------|
| Sample Number | Client Info | | | UCS06236154 | UCS05969068 | UCS05911325 |
| Sample Date | Client Info | | | 09 Jul 2024 | 29 Sep 2023 | 25 Jul 2023 |
| Machine Age | hrs | Client Info | | 56851 | 58058 | 57309 |
| Oil Age | hrs | Client Info | | 4000 | 500 | 7000 |
| Oil Changed | Client Info | | | Changed | N/A | Changed |
| Sample Status | | | | ATTENTION | NORMAL | NORMAL |

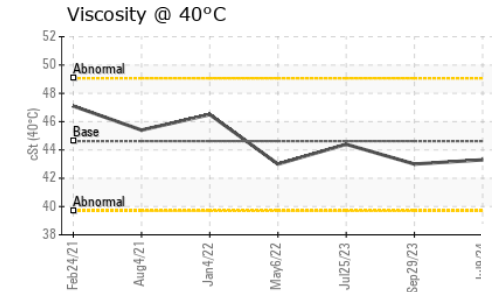
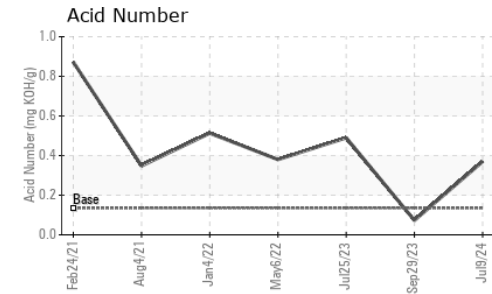
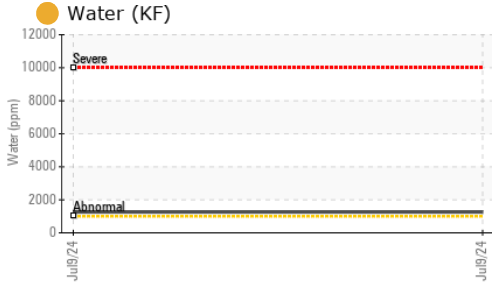
| WEAR METALS | | method | limit/base | current | history1 | history2 |
|-------------|-----|-------------|------------|----------|----------|----------|
| Iron | ppm | ASTM D5185m | >50 | 1 | 0 | 6 |
| Chromium | ppm | ASTM D5185m | >10 | 0 | 0 | 0 |
| Nickel | ppm | ASTM D5185m | | 0 | 0 | 0 |
| Titanium | ppm | ASTM D5185m | | 0 | <1 | 0 |
| Silver | ppm | ASTM D5185m | | 0 | 0 | 0 |
| Aluminum | ppm | ASTM D5185m | >25 | 0 | 0 | <1 |
| Lead | ppm | ASTM D5185m | >25 | 0 | 0 | 0 |
| Copper | ppm | ASTM D5185m | >50 | 0 | 1 | 0 |
| Tin | ppm | ASTM D5185m | >15 | 0 | <1 | 0 |
| Vanadium | ppm | ASTM D5185m | | 0 | <1 | 0 |
| Cadmium | ppm | ASTM D5185m | | 0 | 0 | 0 |

| ADDITIVES | | method | limit/base | current | history1 | history2 |
|------------|-----|-------------|------------|--------------|----------|----------|
| Boron | ppm | ASTM D5185m | 0 | 0 | 0 | 0 |
| Barium | ppm | ASTM D5185m | 0.3 | <1 | 0 | 0 |
| Molybdenum | ppm | ASTM D5185m | 0 | 0 | 0 | <1 |
| Manganese | ppm | ASTM D5185m | 0.3 | 0 | <1 | 0 |
| Magnesium | ppm | ASTM D5185m | 0.4 | 1 | 0 | 0 |
| Calcium | ppm | ASTM D5185m | 0 | 0 | 0 | 0 |
| Phosphorus | ppm | ASTM D5185m | 689 | 494 | 611 | 496 |
| Zinc | ppm | ASTM D5185m | 0 | 0 | 0 | 0 |
| Sulfur | ppm | ASTM D5185m | 1237 | 453 | 875 | 430 |

| CONTAMINANTS | | method | limit/base | current | history1 | history2 |
|--------------|-----|-------------|------------|--------------|----------|----------|
| Silicon | ppm | ASTM D5185m | >25 | 2 | 1 | 2 |
| Sodium | ppm | ASTM D5185m | | <1 | 0 | 0 |
| Potassium | ppm | ASTM D5185m | >20 | 0 | <1 | 0 |
| Water | % | ASTM D6304 | >0.1 | 0.126 | --- | --- |
| ppm Water | ppm | ASTM D6304 | >1000 | 1260 | --- | --- |

| FLUID DEGRADATION | | method | limit/base | current | history1 | history2 |
|-------------------|----------|------------|------------|-------------|----------|----------|
| Acid Number (AN) | mg KOH/g | ASTM D8045 | 0.135 | 0.37 | 0.073 | 0.49 |

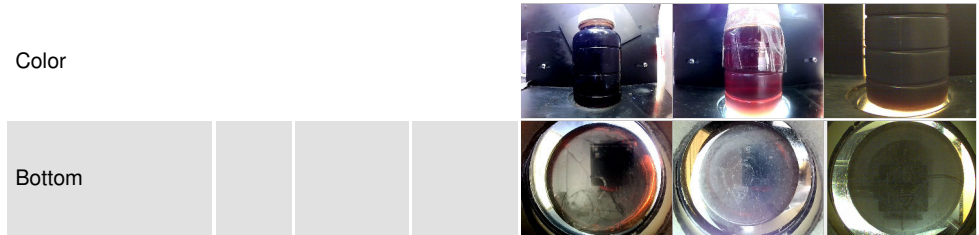
OIL ANALYSIS REPORT



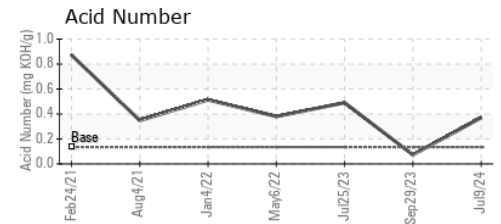
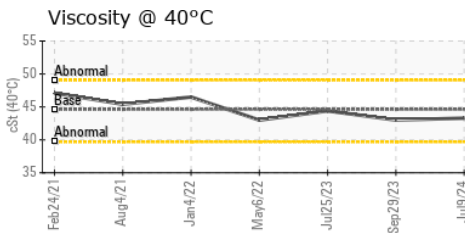
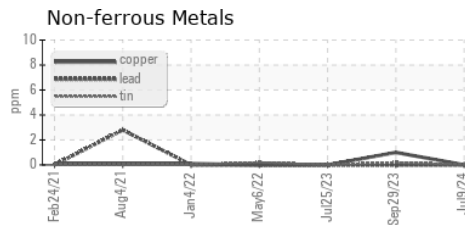
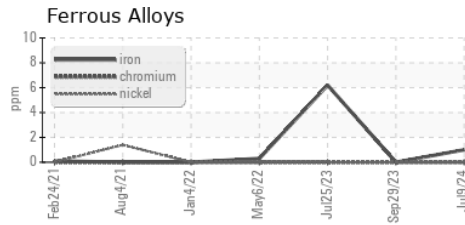
| VISUAL | method | limit/base | current | history1 | history2 |
|------------------|--------|------------|---------|----------|----------|
| White Metal | scalar | *Visual | NONE | NONE | NONE |
| Yellow Metal | scalar | *Visual | NONE | NONE | NONE |
| Precipitate | scalar | *Visual | NONE | NONE | NONE |
| Silt | scalar | *Visual | NONE | NONE | NONE |
| Debris | scalar | *Visual | NONE | MODER | MODER |
| Sand/Dirt | scalar | *Visual | NONE | NONE | NONE |
| Appearance | scalar | *Visual | NORML | NORML | NORML |
| Odor | scalar | *Visual | NORML | NORML | NORML |
| Emulsified Water | scalar | *Visual | >0.1 | 0.2% | NEG |
| Free Water | scalar | *Visual | | NEG | NEG |

| FLUID PROPERTIES | method | limit/base | current | history1 | history2 |
|------------------|--------|------------|---------|----------|----------|
| Visc @ 40°C | cSt | ASTM D445 | 44.62 | 43.3 | 43.0 |

| SAMPLE IMAGES | method | limit/base | current | history1 | history2 |
|---------------|--------|------------|---------|----------|----------|
|---------------|--------|------------|---------|----------|----------|



GRAPHS



Certificate L2367

Laboratory : WearCheck USA - 501 Madison Ave., Cary, NC 27513

Sample No. : UCS06236154

Lab Number : 06236154

Unique Number : 11124988

Test Package : IND 2 (Additional Tests: KF)

To discuss this sample report, contact Customer Service at 1-800-237-1369.

* - Denotes test methods that are outside of the ISO 17025 scope of accreditation.

Statements of conformity to specifications are based on the simple acceptance decision rule (JCGM 106:2012)

Received : 15 Jul 2024

Tested : 16 Jul 2024

Diagnosed : 17 Jul 2024 - Don Baldrige

ADVANCED COMPRESSOR TECHNOLOGIES

2315 B GLENVIEW DR

EVANSVILLE, IN

US 47720

Contact: TODD RILEY

triley@advancedcompressortechnologies.com

T: (812)401-1420

F: (812)401-1451