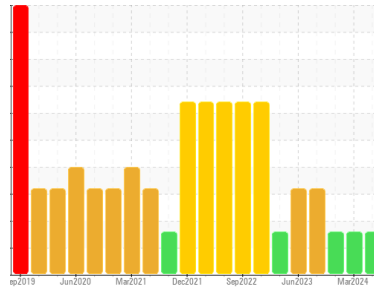




OIL ANALYSIS REPORT

Sample Rating Trend



WATER



Machine Id
RCHS_U2120 RCHS_U2120_SS2120
 Component
Drive End Seal Pot
 Fluid
ROYAL PURPLE BARRIER FLUID FDA22 (--- GAL)

DIAGNOSIS

Recommendation

We advise that you follow the water drain-off procedure for this component. Resample at the next service interval to monitor.

Wear

All component wear rates are normal.

Contamination

Free water present.

Fluid Condition

The AN level is acceptable for this fluid. The condition of the oil is suitable for further service.

SAMPLE INFORMATION

method	limit/base	current	history1	history2
Sample Number	Client Info	RP0043865	RP0029024	RP0025836
Sample Date	Client Info	27 Jun 2024	18 Mar 2024	26 Dec 2023
Machine Age	hrs	0	0	0
Oil Age	hrs	0	0	0
Oil Changed	Client Info	N/A	N/A	N/A
Sample Status		ABNORMAL	ABNORMAL	ABNORMAL

WEAR METALS

method	limit/base	current	history1	history2	
Iron	ppm	ASTM D5185m >20	0	0	0
Chromium	ppm	ASTM D5185m >20	0	0	0
Nickel	ppm	ASTM D5185m >20	0	0	0
Titanium	ppm	ASTM D5185m	0	0	<1
Silver	ppm	ASTM D5185m	0	0	0
Aluminum	ppm	ASTM D5185m >20	0	0	0
Lead	ppm	ASTM D5185m >20	0	0	0
Copper	ppm	ASTM D5185m >20	0	<1	<1
Tin	ppm	ASTM D5185m >20	0	0	0
Vanadium	ppm	ASTM D5185m	0	<1	<1
Cadmium	ppm	ASTM D5185m	0	0	0

ADDITIVES

method	limit/base	current	history1	history2	
Boron	ppm	ASTM D5185m	0	0	0
Barium	ppm	ASTM D5185m	0	0	0
Molybdenum	ppm	ASTM D5185m	0	0	0
Manganese	ppm	ASTM D5185m	0	0	0
Magnesium	ppm	ASTM D5185m	0	1	0
Calcium	ppm	ASTM D5185m	0	0	0
Phosphorus	ppm	ASTM D5185m	0	0	0
Zinc	ppm	ASTM D5185m	0	0	0

CONTAMINANTS

method	limit/base	current	history1	history2	
Silicon	ppm	ASTM D5185m >15	2	<1	<1
Sodium	ppm	ASTM D5185m	2	2	0
Potassium	ppm	ASTM D5185m >20	<1	<1	0
Water	%	ASTM D6304 >0.05	0.015	0.042	0.025
ppm Water	ppm	ASTM D6304 >500	151	420	250

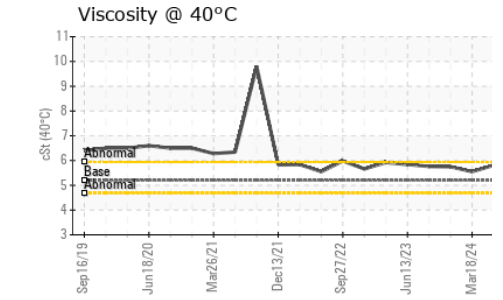
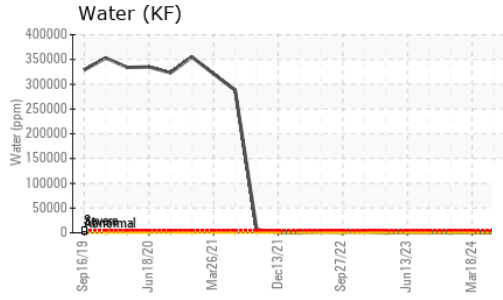
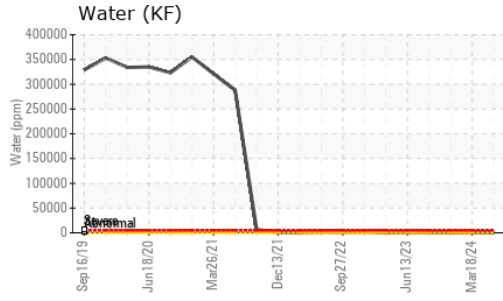
FLUID DEGRADATION

method	limit/base	current	history1	history2	
Acid Number (AN)	mg KOH/g	ASTM D8045	0.04	0.044	0.048

VISUAL

method	limit/base	current	history1	history2	
White Metal	scalar	*Visual NONE	NONE	NONE	NONE
Yellow Metal	scalar	*Visual NONE	NONE	NONE	NONE
Precipitate	scalar	*Visual NONE	NONE	NONE	NONE
Silt	scalar	*Visual NONE	NONE	NONE	NONE
Debris	scalar	*Visual NONE	NONE	LIGHT	LIGHT
Sand/Dirt	scalar	*Visual NONE	NONE	NONE	NONE
Appearance	scalar	*Visual NORML	NORML	NORML	NORML
Odor	scalar	*Visual NORML	NORML	NORML	NORML
Emulsified Water	scalar	*Visual >0.05	NEG	0.2%	0.2%
Free Water	scalar	*Visual	1.0	1.0	2.0

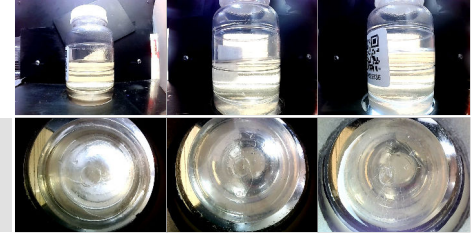
OIL ANALYSIS REPORT



FLUID PROPERTIES	method	limit/base	current	history1	history2	
Visc @ 40°C	cSt	ASTM D445	5.2	5.81	5.55	5.75

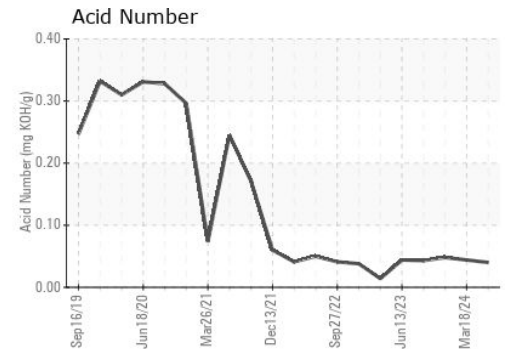
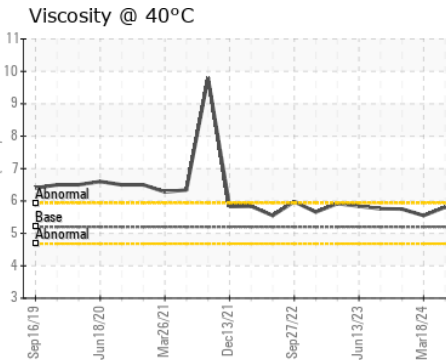
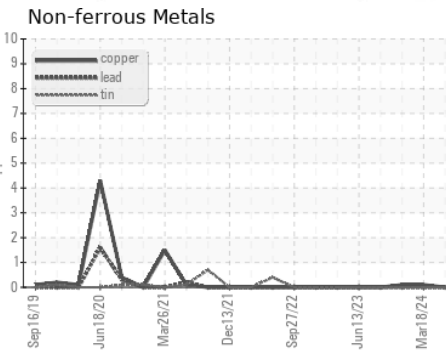
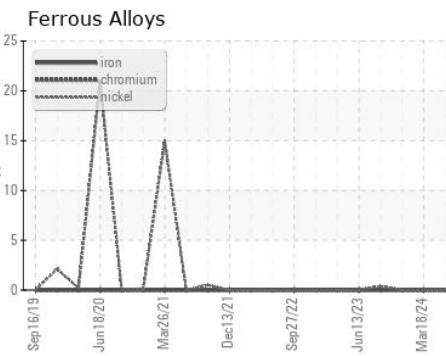
SAMPLE IMAGES	method	limit/base	current	history1	history2
---------------	--------	------------	---------	----------	----------

Color



Bottom

GRAPHS



Certificate L2367

Laboratory : WearCheck USA - 501 Madison Ave., Cary, NC 27513

Sample No. : RP0043865

Lab Number : 06236685

Unique Number : 11125519

Test Package : IND 2 (Additional Tests: PrtCount)

Received : 15 Jul 2024

Tested : 19 Jul 2024

Diagnosed : 19 Jul 2024 - Jonathan Hester

ENERGY TRANSFER - ROCHESTER

1406 EAST AVON ROAD

ROCHESTER, MI

US 48307

Contact: SCOTT VERHELLE

To discuss this sample report, contact Customer Service at 1-800-237-1369.

* - Denotes test methods that are outside of the ISO 17025 scope of accreditation.

Statements of conformity to specifications are based on the simple acceptance decision rule (JCGM 106:2012)

T: (313)580-0267

F: