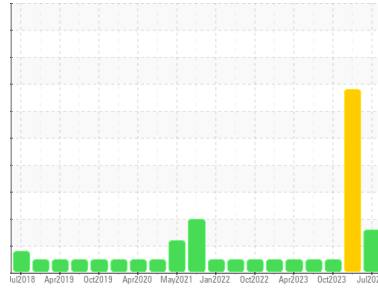


Sample Rating Trend



**WEAR**



Area  
**DIAMOND BLUE 8K**  
 Machine Id  
**SULLAIR 26207BGF - DOE RUN**  
 Component  
**Compressor**

**DIAGNOSIS**

**Recommendation**

No corrective action is recommended at this time. We recommend an early resample to monitor this condition.

**Wear**

The iron level is abnormal. The aluminum level is abnormal.

**Contamination**

The water content is negligible. There is no indication of any contamination in the oil.

**Fluid Condition**

The AN level is acceptable for this fluid. The condition of the oil is acceptable for the time in service.

SAMPLE INFORMATION		method	limit/base	current	history1	history2
Sample Number	Client Info			<b>JHF0000431</b>	UCH06144344	UCH05999136
Sample Date	Client Info			<b>08 Jul 2024</b>	03 Apr 2024	16 Oct 2023
Machine Age	hrs	Client Info		<b>7493</b>	59237	2416
Oil Age	hrs	Client Info		<b>1570</b>	0	1000
Oil Changed	Client Info			<b>Not Changed</b>	Changed	Not Changed
Sample Status				<b>ATTENTION</b>	SEVERE	NORMAL

CONTAMINATION		method	limit/base	current	history1	history2
Water	WC Method		>0.8	<b>NEG</b>	NEG	NEG

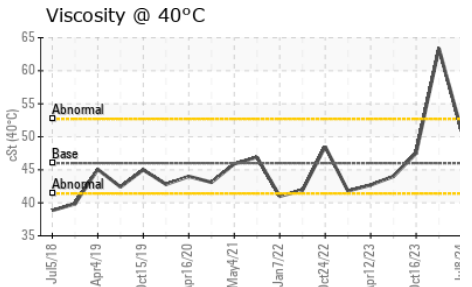
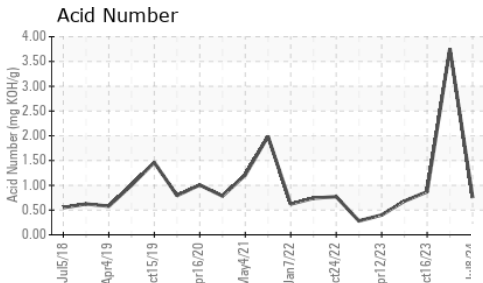
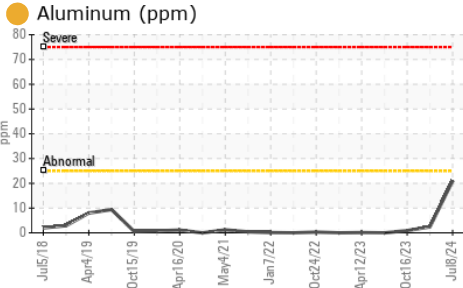
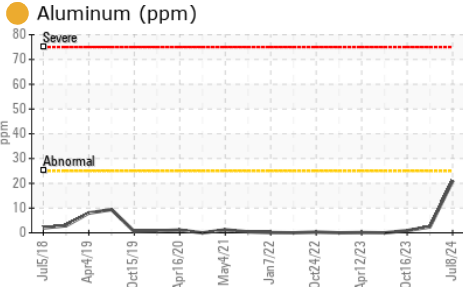
WEAR METALS		method	limit/base	current	history1	history2
Iron	ppm	ASTM D5185m	>50	<b>107</b>	7	1
Chromium	ppm	ASTM D5185m	>10	<b>0</b>	<1	0
Nickel	ppm	ASTM D5185m		<b>0</b>	1	<1
Titanium	ppm	ASTM D5185m		<b>0</b>	<1	0
Silver	ppm	ASTM D5185m		<b>0</b>	0	0
Aluminum	ppm	ASTM D5185m	>25	<b>21</b>	2	<1
Lead	ppm	ASTM D5185m	>25	<b>7</b>	12	8
Copper	ppm	ASTM D5185m	>50	<b>2</b>	1	<1
Tin	ppm	ASTM D5185m	>15	<b>&lt;1</b>	2	0
Vanadium	ppm	ASTM D5185m		<b>0</b>	<1	0
Cadmium	ppm	ASTM D5185m		<b>&lt;1</b>	1	<1

ADDITIVES		method	limit/base	current	history1	history2
Boron	ppm	ASTM D5185m	2	<b>0</b>	<1	<1
Barium	ppm	ASTM D5185m	525	<b>194</b>	154	336
Molybdenum	ppm	ASTM D5185m	10	<b>0</b>	<1	0
Manganese	ppm	ASTM D5185m		<b>2</b>	1	0
Magnesium	ppm	ASTM D5185m	5	<b>2</b>	5	<1
Calcium	ppm	ASTM D5185m	10	<b>15</b>	22	4
Phosphorus	ppm	ASTM D5185m	250	<b>14</b>	15	10
Zinc	ppm	ASTM D5185m	100	<b>12</b>	23	0
Sulfur	ppm	ASTM D5185m	400	<b>322</b>	286	253

CONTAMINANTS		method	limit/base	current	history1	history2
Silicon	ppm	ASTM D5185m	>25	<b>1</b>	3	1
Sodium	ppm	ASTM D5185m		<b>65</b>	19	44
Potassium	ppm	ASTM D5185m	>20	<b>20</b>	6	4

FLUID DEGRADATION		method	limit/base	current	history1	history2
Acid Number (AN)	mg KOH/g	ASTM D8045		<b>0.75</b>	▲ 3.76	0.87

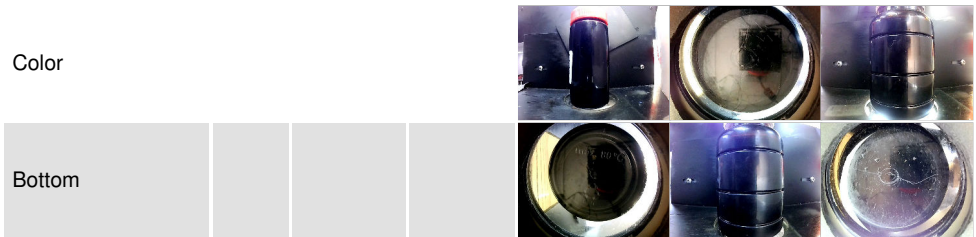
# OIL ANALYSIS REPORT



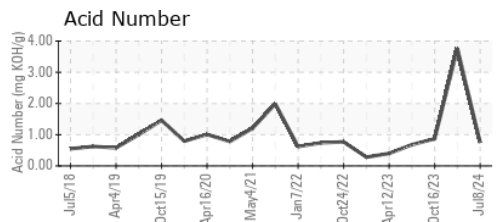
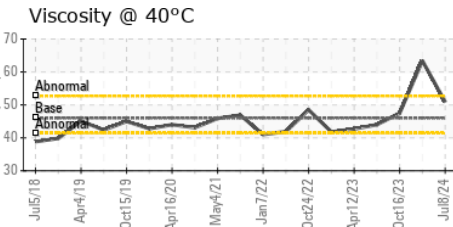
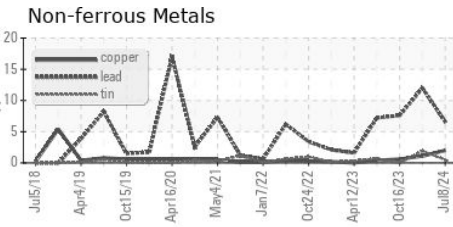
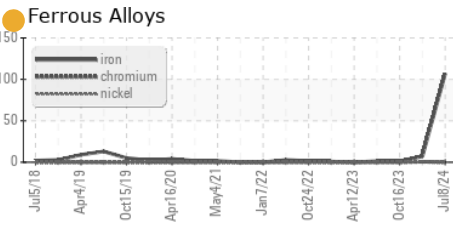
VISUAL	method	limit/base	current	history1	history2
White Metal	scalar	*Visual	NONE	NONE	NONE
Yellow Metal	scalar	*Visual	NONE	NONE	NONE
Precipitate	scalar	*Visual	NONE	NONE	NONE
Silt	scalar	*Visual	NONE	NONE	NONE
Debris	scalar	*Visual	NONE	NONE	NONE
Sand/Dirt	scalar	*Visual	NONE	NONE	NONE
Appearance	scalar	*Visual	NORML	NORML	NORML
Odor	scalar	*Visual	NORML	NORML	NORML
Emulsified Water	scalar	*Visual	>0.8	NEG	▲ 0.2%
Free Water	scalar	*Visual		NEG	NEG

FLUID PROPERTIES	method	limit/base	current	history1	history2	
Visc @ 40°C	cSt	ASTM D445	46	50.9	▲ 63.4	47.5

SAMPLE IMAGES	method	limit/base	current	history1	history2
---------------	--------	------------	---------	----------	----------



## GRAPHS



**Laboratory** : WearCheck USA - 501 Madison Ave., Cary, NC 27513  
**Sample No.** : JHF0000431  
**Lab Number** : 06236943  
**Unique Number** : 11125777  
**Test Package** : IND 2  
**Received** : 15 Jul 2024  
**Tested** : 16 Jul 2024  
**Diagnosed** : 17 Jul 2024 - Don Baldrige

**JOHN HENRY FOSTER COMPANY**  
 4700 LEBOURGET STREET  
 SAINT LOUIS, MO  
 US 63134  
 Contact: RACHEL VON HATTEN  
 rvonhatten@jhfc.com

To discuss this sample report, contact Customer Service at 1-800-237-1369.  
 \* - Denotes test methods that are outside of the ISO 17025 scope of accreditation.  
 Statements of conformity to specifications are based on the simple acceptance decision rule (JCGM 106:2012)