

Area

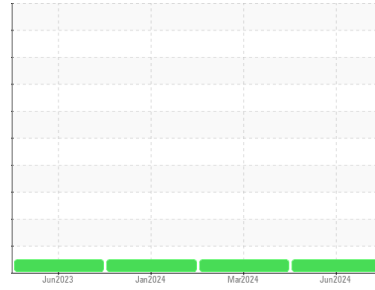
ULTRA COOLANT SSR

Machine Id

INGERSOLL RAND F3277091 - SOLVAY FLOURIDES

Component

Compressor



DIAGNOSIS

Recommendation

Resample at the next service interval to monitor.

Wear

All component wear rates are normal.

Contamination

There is no indication of any contamination in the oil.

Fluid Condition

The AN level is acceptable for this fluid. The condition of the oil is suitable for further service.

SAMPLE INFORMATION

method	limit/base	current	history1	history2
Sample Number	Client Info	JHF0000249	UCH06154524	UCH06065755
Sample Date	Client Info	18 Jun 2024	25 Mar 2024	04 Jan 2024
Machine Age	hrs	22825	22507	21441
Oil Age	hrs	5361	5050	3985
Oil Changed	Client Info	Not Changed	Not Changed	Not Changed
Sample Status		NORMAL	NORMAL	NORMAL

CONTAMINATION

method	limit/base	current	history1	history2
Water	WC Method >0.1	NEG	NEG	NEG

WEAR METALS

method	limit/base	current	history1	history2
Iron	ppm ASTM D5185m >50	2	1	<1
Chromium	ppm ASTM D5185m >10	<1	<1	0
Nickel	ppm ASTM D5185m	<1	0	0
Titanium	ppm ASTM D5185m	<1	<1	0
Silver	ppm ASTM D5185m	<1	<1	0
Aluminum	ppm ASTM D5185m >25	2	1	0
Lead	ppm ASTM D5185m >25	0	<1	0
Copper	ppm ASTM D5185m >50	2	2	2
Tin	ppm ASTM D5185m >15	<1	<1	<1
Vanadium	ppm ASTM D5185m	<1	<1	<1
Cadmium	ppm ASTM D5185m	<1	<1	0

ADDITIVES

method	limit/base	current	history1	history2
Boron	ppm ASTM D5185m 0	0	0	0
Barium	ppm ASTM D5185m 500	813	808	796
Molybdenum	ppm ASTM D5185m 0	<1	0	0
Manganese	ppm ASTM D5185m	<1	0	0
Magnesium	ppm ASTM D5185m 0	<1	<1	0
Calcium	ppm ASTM D5185m 0	0	9	1
Phosphorus	ppm ASTM D5185m 20	8	7	1
Zinc	ppm ASTM D5185m 0	10	3	1
Sulfur	ppm ASTM D5185m 200	208	287	324

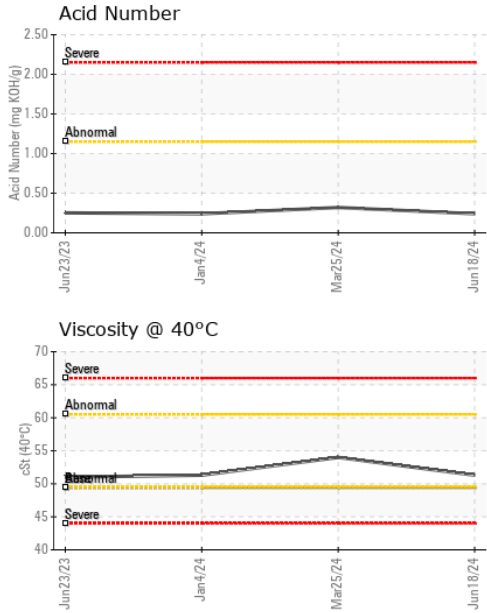
CONTAMINANTS

method	limit/base	current	history1	history2
Silicon	ppm ASTM D5185m >25	1	2	2
Sodium	ppm ASTM D5185m	33	35	31
Potassium	ppm ASTM D5185m >20	5	5	2

FLUID DEGRADATION

method	limit/base	current	history1	history2
Acid Number (AN)	mg KOH/g ASTM D8045	0.24	0.32	0.24

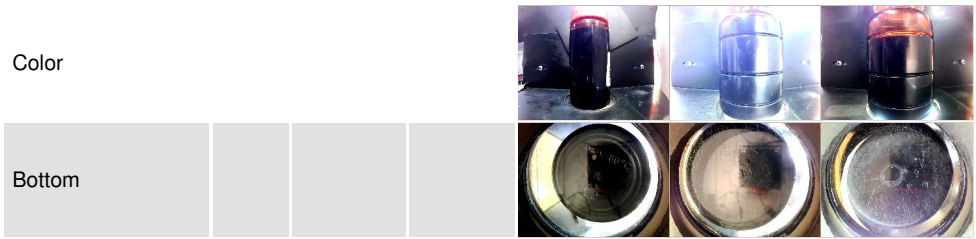
OIL ANALYSIS REPORT



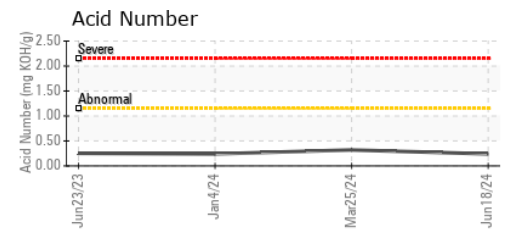
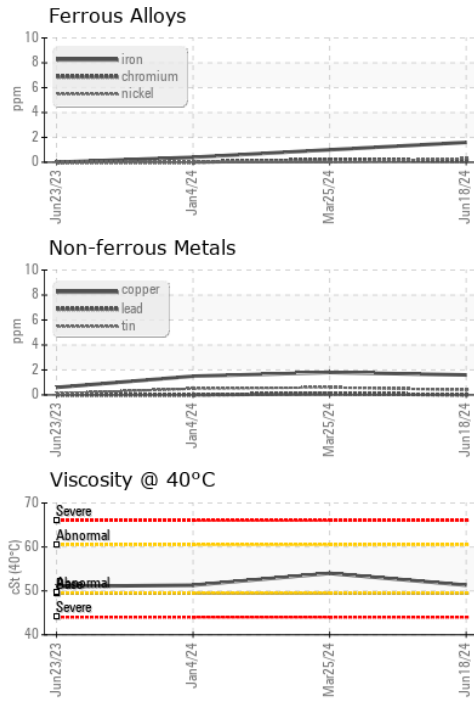
VISUAL	method	limit/base	current	history1	history2
White Metal	scalar	*Visual	NONE	NONE	NONE
Yellow Metal	scalar	*Visual	NONE	NONE	NONE
Precipitate	scalar	*Visual	NONE	NONE	NONE
Silt	scalar	*Visual	NONE	NONE	NONE
Debris	scalar	*Visual	NONE	NONE	NONE
Sand/Dirt	scalar	*Visual	NONE	NONE	NONE
Appearance	scalar	*Visual	NORML	NORML	NORML
Odor	scalar	*Visual	NORML	NORML	NORML
Emulsified Water	scalar	*Visual	>0.1	NEG	NEG
Free Water	scalar	*Visual		NEG	NEG

FLUID PROPERTIES	method	limit/base	current	history1	history2	
Visc @ 40°C	cSt	ASTM D445	49.4	51.3	54.0	51.3

SAMPLE IMAGES	method	limit/base	current	history1	history2
---------------	--------	------------	---------	----------	----------



GRAPHS



Laboratory : WearCheck USA - 501 Madison Ave., Cary, NC 27513
Sample No. : JHF0000249
Lab Number : 06236950
Unique Number : 11125784
Test Package : IND 2
Received : 15 Jul 2024
Tested : 17 Jul 2024
Diagnosed : 17 Jul 2024 - Wes Davis

JOHN HENRY FOSTER COMPANY
 4700 LEBOURGET STREET
 SAINT LOUIS, MO
 US 63134
 Contact: RACHEL VON HATTEN
 rvonhatten@jhf.com

To discuss this sample report, contact Customer Service at 1-800-237-1369.
 * - Denotes test methods that are outside of the ISO 17025 scope of accreditation.
 Statements of conformity to specifications are based on the simple acceptance decision rule (JCGM 106:2012)