

Area
DIAMOND BLUE
 Machine Id
SULLAIR 201307290039 - DOE RUN
 Component
Compressor

DIAGNOSIS

Recommendation

Oil and filter change at the time of sampling has been noted. Resample at the next service interval to monitor.

Wear

All component wear rates are normal.

Contamination

There is no indication of any contamination in the oil.

Fluid Condition

The oil viscosity is higher than normal. Additive levels indicate the addition of a different brand, or type of oil. Confirm oil type.

SAMPLE INFORMATION		method	limit/base	current	history1	history2
Sample Number	Client Info			JHF0000297	JHF0000125	UCH05903366
Sample Date	Client Info			09 Jul 2024	25 Apr 2024	05 Jul 2023
Machine Age	hrs	Client Info		90473	88672	81720
Oil Age	hrs	Client Info		6238	4437	2000
Oil Changed	Client Info			Changed	Not Changd	Not Changd
Sample Status				ATTENTION	ATTENTION	NORMAL

CONTAMINATION		method	limit/base	current	history1	history2
Water	WC Method		>0.1	NEG	NEG	NEG

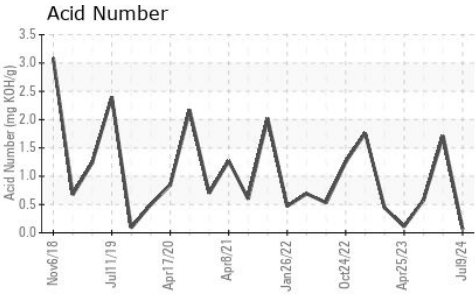
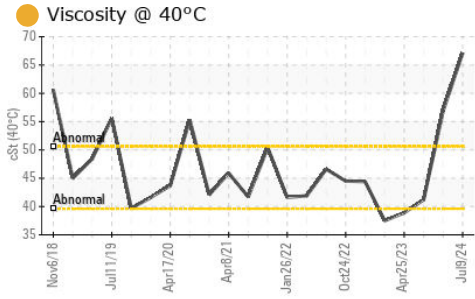
WEAR METALS		method	limit/base	current	history1	history2
Iron	ppm	ASTM D5185m	>50	<1	0	0
Chromium	ppm	ASTM D5185m	>10	<1	0	0
Nickel	ppm	ASTM D5185m		<1	0	0
Titanium	ppm	ASTM D5185m		<1	0	<1
Silver	ppm	ASTM D5185m		<1	0	0
Aluminum	ppm	ASTM D5185m	>25	2	0	<1
Lead	ppm	ASTM D5185m	>25	0	0	4
Copper	ppm	ASTM D5185m	>50	2	4	3
Tin	ppm	ASTM D5185m	>15	<1	<1	<1
Vanadium	ppm	ASTM D5185m		<1	0	<1
Cadmium	ppm	ASTM D5185m		<1	0	0

ADDITIVES		method	limit/base	current	history1	history2
Boron	ppm	ASTM D5185m		4	0	0
Barium	ppm	ASTM D5185m		40	22	556
Molybdenum	ppm	ASTM D5185m		<1	0	0
Manganese	ppm	ASTM D5185m		<1	1	0
Magnesium	ppm	ASTM D5185m		<1	0	2
Calcium	ppm	ASTM D5185m		0	0	5
Phosphorus	ppm	ASTM D5185m		6	0	0
Zinc	ppm	ASTM D5185m		3	0	5
Sulfur	ppm	ASTM D5185m		323	419	475

CONTAMINANTS		method	limit/base	current	history1	history2
Silicon	ppm	ASTM D5185m	>25	<1	0	<1
Sodium	ppm	ASTM D5185m		7	7	83
Potassium	ppm	ASTM D5185m	>20	2	<1	9

FLUID DEGRADATION		method	limit/base	current	history1	history2
Acid Number (AN)	mg KOH/g	ASTM D8045		0.069	1.71	0.58

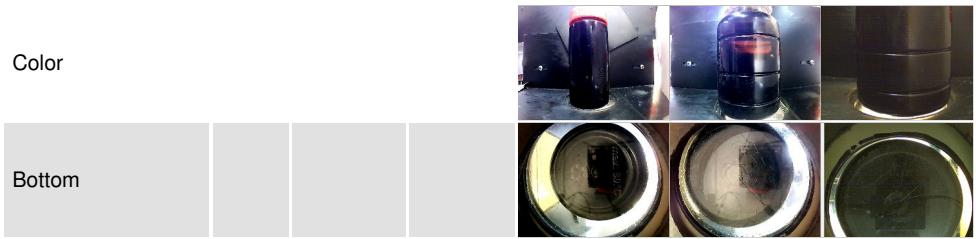
OIL ANALYSIS REPORT



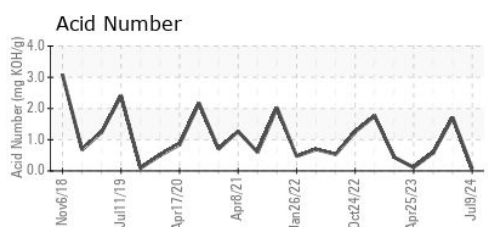
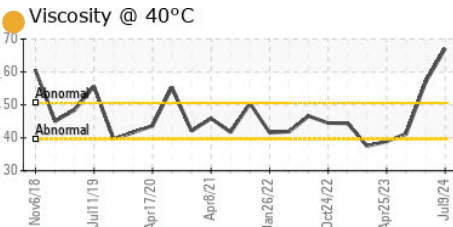
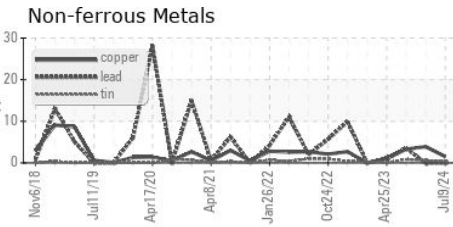
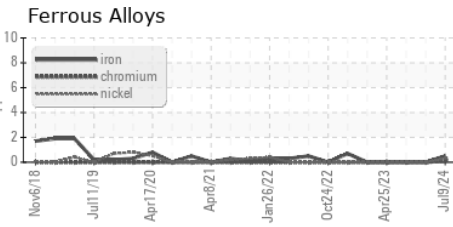
VISUAL	method	limit/base	current	history1	history2
White Metal	scalar	*Visual	NONE	NONE	NONE
Yellow Metal	scalar	*Visual	NONE	NONE	NONE
Precipitate	scalar	*Visual	NONE	NONE	NONE
Silt	scalar	*Visual	NONE	NONE	NONE
Debris	scalar	*Visual	NONE	NONE	NONE
Sand/Dirt	scalar	*Visual	NONE	NONE	NONE
Appearance	scalar	*Visual	NORML	NORML	NORML
Odor	scalar	*Visual	NORML	NORML	NORML
Emulsified Water	scalar	*Visual	>0.1	NEG	NEG
Free Water	scalar	*Visual		NEG	NEG

FLUID PROPERTIES	method	limit/base	current	history1	history2
Visc @ 40°C	cSt	ASTM D445	67.1	56.9	41.2

SAMPLE IMAGES	method	limit/base	current	history1	history2
---------------	--------	------------	---------	----------	----------



GRAPHS



Laboratory : WearCheck USA - 501 Madison Ave., Cary, NC 27513
Sample No. : JHF0000297
Lab Number : 06236953
Unique Number : 11125787
Test Package : IND 2
Received : 15 Jul 2024
Tested : 18 Jul 2024
Diagnosed : 19 Jul 2024 - Jonathan Hester

JOHN HENRY FOSTER COMPANY
 4700 LEBOURGET STREET
 SAINT LOUIS, MO
 US 63134
 Contact: RACHEL VON HATTEN
 rvonhatten@jhf.com

To discuss this sample report, contact Customer Service at 1-800-237-1369.
 * - Denotes test methods that are outside of the ISO 17025 scope of accreditation.
 Statements of conformity to specifications are based on the simple acceptance decision rule (JCGM 106:2012)