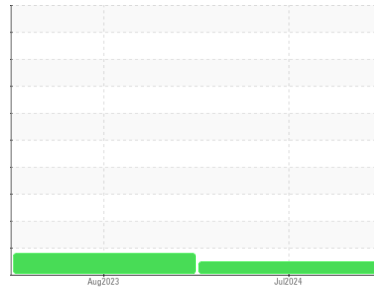




# OIL ANALYSIS REPORT

## Sample Rating Trend



**NORMAL**



Machine Id  
**220-06 WC-55 (S/N 255516)**  
 Component  
**Hydraulic System**  
 Fluid  
**CHEVRON RANDO HD 46 (11 GAL)**

### DIAGNOSIS

#### Recommendation

Resample at the next service interval to monitor.

#### Wear

All component wear rates are normal.

#### Contamination

There is no indication of any contamination in the oil. The amount and size of particulates present in the system are acceptable.

#### Fluid Condition

The AN level is acceptable for this fluid. The condition of the oil is suitable for further service.

SAMPLE INFORMATION		method	limit/base	current	history1	history2
Sample Number	Client Info			<b>PH0003025</b>	PH0001959	---
Sample Date	Client Info			<b>02 Jul 2024</b>	17 Aug 2023	---
Machine Age	hrs	Client Info		<b>0</b>	888	---
Oil Age	hrs	Client Info		<b>1464</b>	888	---
Oil Changed	Client Info			<b>Changed</b>	N/A	---
Sample Status				<b>NORMAL</b>	MARGINAL	---

CONTAMINATION		method	limit/base	current	history1	history2
Water	WC Method		>0.05	<b>NEG</b>	NEG	---

WEAR METALS		method	limit/base	current	history1	history2
Iron	ppm	ASTM D5185m	>20	<b>0</b>	0	---
Chromium	ppm	ASTM D5185m	>20	<b>0</b>	0	---
Nickel	ppm	ASTM D5185m	>20	<b>0</b>	0	---
Titanium	ppm	ASTM D5185m		<b>0</b>	0	---
Silver	ppm	ASTM D5185m		<b>0</b>	0	---
Aluminum	ppm	ASTM D5185m	>20	<b>0</b>	<1	---
Lead	ppm	ASTM D5185m	>20	<b>0</b>	<1	---
Copper	ppm	ASTM D5185m	>20	<b>&lt;1</b>	▲ 27	---
Tin	ppm	ASTM D5185m	>20	<b>0</b>	0	---
Vanadium	ppm	ASTM D5185m		<b>0</b>	0	---
Cadmium	ppm	ASTM D5185m		<b>0</b>	0	---

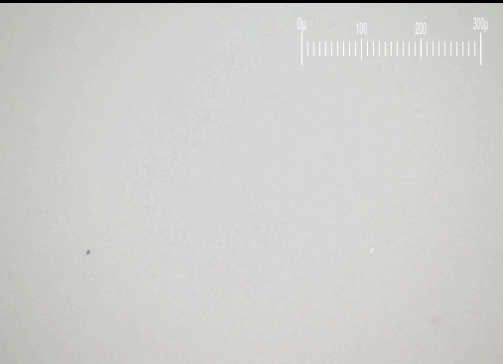
ADDITIVES		method	limit/base	current	history1	history2
Boron	ppm	ASTM D5185m		<b>0</b>	0	---
Barium	ppm	ASTM D5185m		<b>0</b>	2	---
Molybdenum	ppm	ASTM D5185m		<b>0</b>	0	---
Manganese	ppm	ASTM D5185m		<b>0</b>	0	---
Magnesium	ppm	ASTM D5185m		<b>0</b>	<1	---
Calcium	ppm	ASTM D5185m		<b>39</b>	35	---
Phosphorus	ppm	ASTM D5185m		<b>351</b>	276	---
Zinc	ppm	ASTM D5185m		<b>407</b>	360	---
Sulfur	ppm	ASTM D5185m		<b>939</b>	2035	---

CONTAMINANTS		method	limit/base	current	history1	history2
Silicon	ppm	ASTM D5185m	>15	<b>3</b>	1	---
Sodium	ppm	ASTM D5185m		<b>&lt;1</b>	0	---
Potassium	ppm	ASTM D5185m	>20	<b>0</b>	<1	---

FLUID CLEANLINESS		method	limit/base	current	history1	history2
Particles >4µm		ASTM D7647	>2500	<b>213</b>	456	---
Particles >6µm		ASTM D7647	>640	<b>62</b>	167	---
Particles >14µm		ASTM D7647	>160	<b>4</b>	24	---
Particles >21µm		ASTM D7647	>40	<b>0</b>	8	---
Particles >38µm		ASTM D7647	>10	<b>0</b>	0	---
Particles >71µm		ASTM D7647	>3	<b>0</b>	0	---
Oil Cleanliness		ISO 4406 (c)	>18/16/14	<b>15/13/9</b>	16/15/12	---

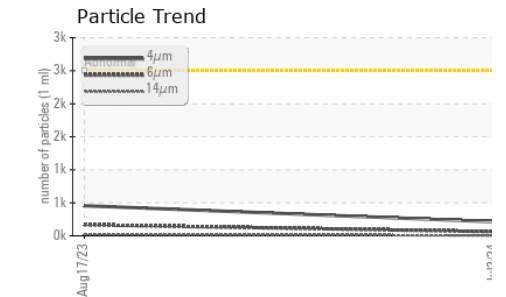
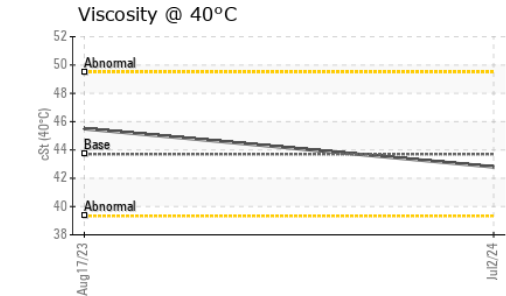
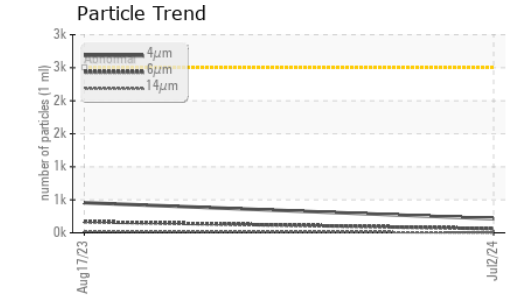
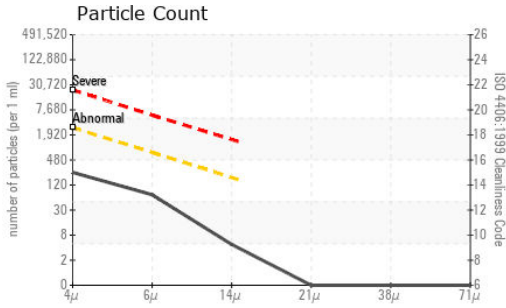
FLUID DEGRADATION		method	limit/base	current	history1	history2
Acid Number (AN)	mg KOH/g	ASTM D8045		<b>0.36</b>	0.30	---

Particle Filter (Magn: 200 x)





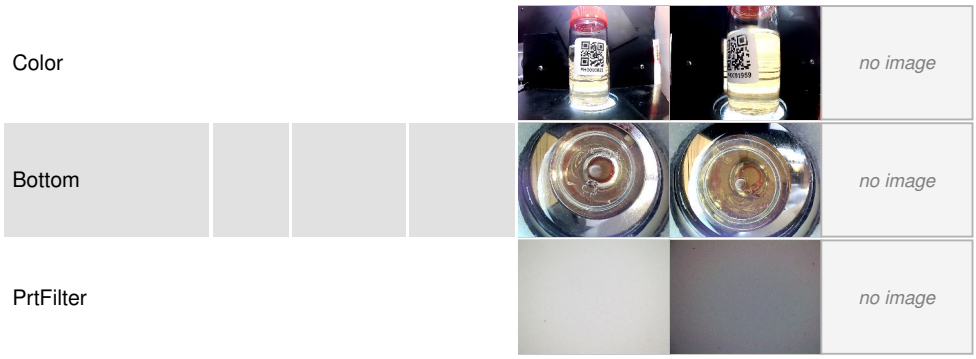
# OIL ANALYSIS REPORT



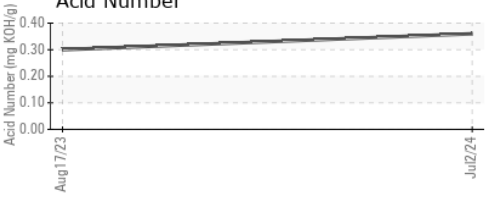
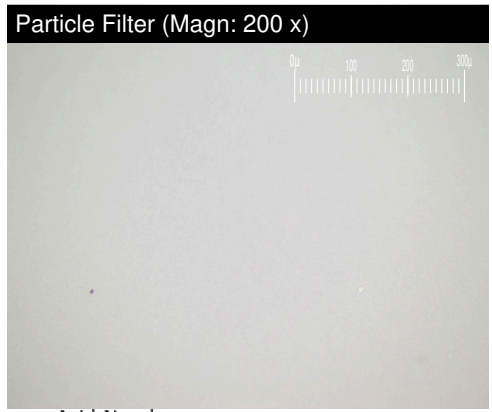
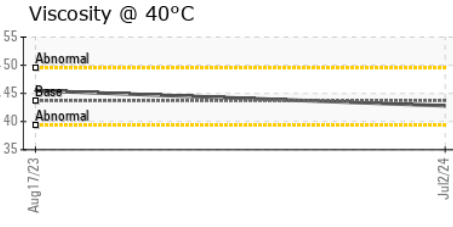
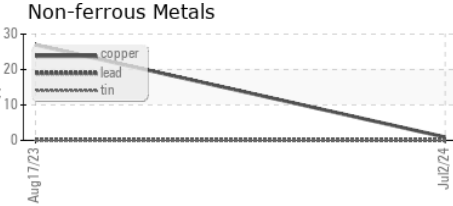
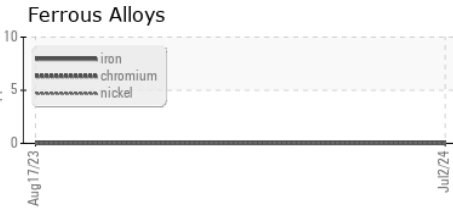
VISUAL	method	limit/base	current	history1	history2
White Metal	scalar	*Visual	NONE	NONE	---
Yellow Metal	scalar	*Visual	NONE	NONE	---
Precipitate	scalar	*Visual	NONE	NONE	---
Silt	scalar	*Visual	NONE	NONE	---
Debris	scalar	*Visual	NONE	NONE	---
Sand/Dirt	scalar	*Visual	NONE	NONE	---
Appearance	scalar	*Visual	NORML	NORML	---
Odor	scalar	*Visual	NORML	NORML	---
Emulsified Water	scalar	*Visual	>0.05	NEG	---
Free Water	scalar	*Visual		NEG	---

FLUID PROPERTIES	method	limit/base	current	history1	history2
Visc @ 40°C	cSt	ASTM D445	43.7	42.8	45.5

SAMPLE IMAGES	method	limit/base	current	history1	history2
---------------	--------	------------	---------	----------	----------



## GRAPHS



**Laboratory** : WearCheck USA - 501 Madison Ave., Cary, NC 27513  
**Sample No.** : PH0003025      **Received** : 16 Jul 2024  
**Lab Number** : 06237763      **Tested** : 18 Jul 2024  
**Unique Number** : 11126597      **Diagnosed** : 18 Jul 2024 - Jonathan Hester  
**Test Package** : PLANT ( Additional Tests: PrtFilter )

**SMC LTD**  
 3250 BRICKWAY BLVD  
 SANTA ROSA, CA  
 US 95403  
 Contact: SUSAN BENNETT  
 susan.bennett@smcltd.com

To discuss this sample report, contact Customer Service at 1-800-237-1369.  
 \* - Denotes test methods that are outside of the ISO 17025 scope of accreditation.  
 Statements of conformity to specifications are based on the simple acceptance decision rule (JCGM 106:2012)