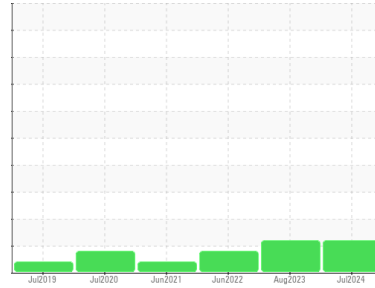




OIL ANALYSIS REPORT

Sample Rating Trend



ISO



Area

Granulation

Machine Id

Littleford FFL35CB01 Mixer, Agitator

Component

Gearbox

Fluid

JAX MAGNA-PLATE 220 FG (4 GAL)

DIAGNOSIS

Recommendation

No corrective action is recommended at this time. Resample at the next service interval to monitor.

Wear

All component wear rates are normal.

Contamination

There is a high amount of silt (particulates < 14 microns in size) present in the oil.

Fluid Condition

The AN level is acceptable for this fluid. The condition of the oil is suitable for further service.

SAMPLE INFORMATION

| | method | limit/base | current | history1 | history2 |
|---------------|-------------|-------------|--------------------|-------------|-------------|
| Sample Number | Client Info | | WC0901915 | WC0835749 | WC0706859 |
| Sample Date | Client Info | | 09 Jul 2024 | 09 Aug 2023 | 23 Jun 2022 |
| Machine Age | hrs | Client Info | 0 | 0 | 0 |
| Oil Age | hrs | Client Info | 0 | 0 | 0 |
| Oil Changed | Client Info | | N/A | N/A | N/A |
| Sample Status | | | ABNORMAL | ABNORMAL | ABNORMAL |

WEAR METALS

| | method | limit/base | current | history1 | history2 |
|----------|--------|------------------|-----------|----------|----------|
| Iron | ppm | ASTM D5185m >200 | 10 | 9 | 7 |
| Chromium | ppm | ASTM D5185m >15 | 0 | 0 | 0 |
| Nickel | ppm | ASTM D5185m >15 | 0 | 0 | 0 |
| Titanium | ppm | ASTM D5185m | 0 | 0 | 0 |
| Silver | ppm | ASTM D5185m | 0 | 0 | <1 |
| Aluminum | ppm | ASTM D5185m >25 | 0 | 1 | <1 |
| Lead | ppm | ASTM D5185m >100 | 0 | 0 | <1 |
| Copper | ppm | ASTM D5185m >200 | 0 | <1 | 3 |
| Tin | ppm | ASTM D5185m >25 | 0 | 0 | 0 |
| Vanadium | ppm | ASTM D5185m | 0 | <1 | 0 |
| Cadmium | ppm | ASTM D5185m | 0 | 0 | 0 |

ADDITIVES

| | method | limit/base | current | history1 | history2 |
|------------|--------|-------------|--------------|----------|----------|
| Boron | ppm | ASTM D5185m | 0 | 0 | 1 |
| Barium | ppm | ASTM D5185m | 0 | 0 | <1 |
| Molybdenum | ppm | ASTM D5185m | 0 | 0 | 0 |
| Manganese | ppm | ASTM D5185m | 0 | <1 | <1 |
| Magnesium | ppm | ASTM D5185m | <1 | 0 | <1 |
| Calcium | ppm | ASTM D5185m | 3 | 4 | 103 |
| Phosphorus | ppm | ASTM D5185m | 708 | 643 | 450 |
| Zinc | ppm | ASTM D5185m | 5 | 9 | 580 |
| Sulfur | ppm | ASTM D5185m | 783 | 768 | 1822 |

CONTAMINANTS

| | method | limit/base | current | history1 | history2 |
|-----------|--------|------------------|--------------|----------|----------|
| Silicon | ppm | ASTM D5185m >50 | 1 | 1 | 1 |
| Sodium | ppm | ASTM D5185m | <1 | <1 | <1 |
| Potassium | ppm | ASTM D5185m >20 | 0 | 0 | 3 |
| Water | % | ASTM D6304 >0.2 | 0.003 | 0.001 | 0.009 |
| ppm Water | ppm | ASTM D6304 >2000 | 40 | 6.4 | 90.4 |

FLUID CLEANLINESS

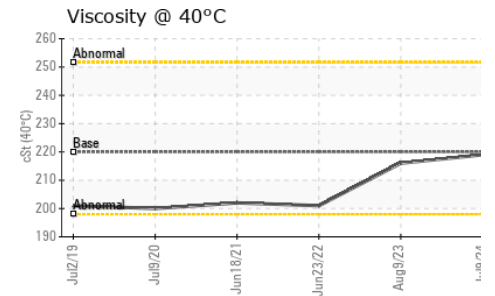
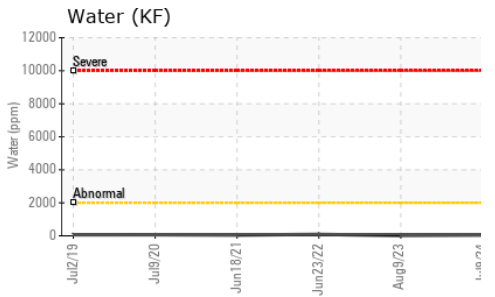
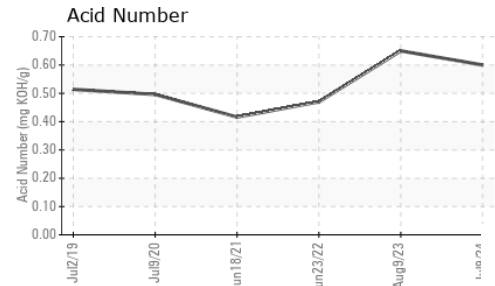
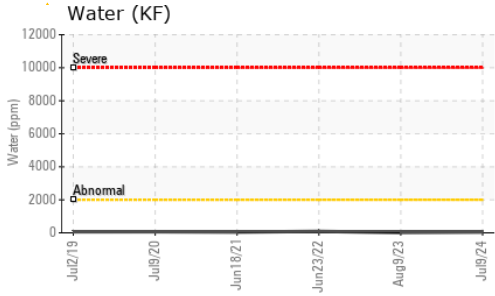
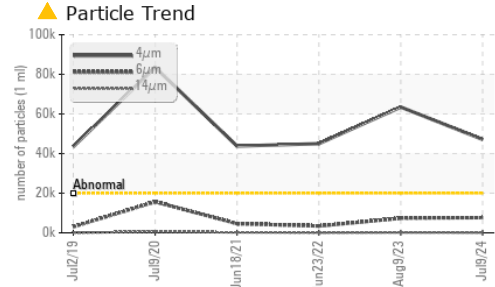
| | method | limit/base | current | history1 | history2 |
|-----------------|--------------|------------|-------------------|------------|------------|
| Particles >4µm | ASTM D7647 | >20000 | ▲ 47141 | ▲ 63479 | ▲ 45006 |
| Particles >6µm | ASTM D7647 | >5000 | ● 7655 | ● 7386 | 3439 |
| Particles >14µm | ASTM D7647 | >640 | 93 | 174 | 51 |
| Particles >21µm | ASTM D7647 | >160 | 10 | 30 | 9 |
| Particles >38µm | ASTM D7647 | >40 | 0 | 1 | 2 |
| Particles >71µm | ASTM D7647 | >10 | 0 | 0 | 0 |
| Oil Cleanliness | ISO 4406 (c) | >21/19/16 | ▲ 23/20/14 | ▲ 23/20/15 | ▲ 23/19/13 |

FLUID DEGRADATION

| | method | limit/base | current | history1 | history2 |
|------------------|----------|------------|-------------|----------|----------|
| Acid Number (AN) | mg KOH/g | ASTM D8045 | 0.60 | 0.65 | 0.47 |



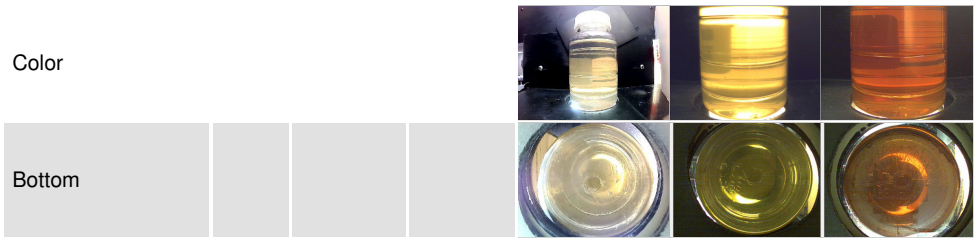
OIL ANALYSIS REPORT



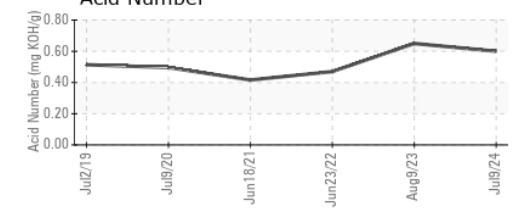
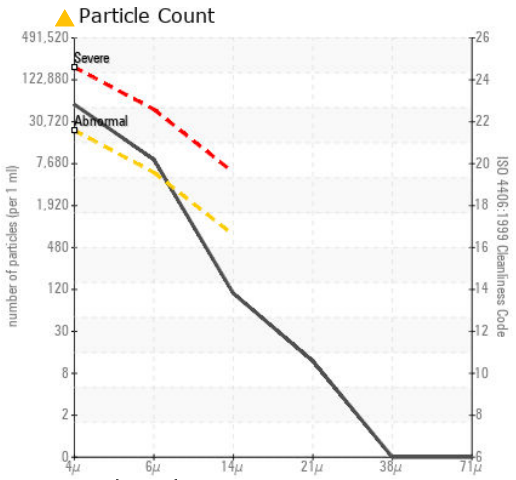
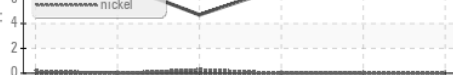
| VISUAL | method | limit/base | current | history1 | history2 |
|------------------|--------|------------|---------|----------|----------|
| White Metal | scalar | *Visual | NONE | NONE | NONE |
| Yellow Metal | scalar | *Visual | NONE | NONE | NONE |
| Precipitate | scalar | *Visual | NONE | NONE | NONE |
| Silt | scalar | *Visual | NONE | NONE | NONE |
| Debris | scalar | *Visual | NONE | NONE | NONE |
| Sand/Dirt | scalar | *Visual | NONE | NONE | NONE |
| Appearance | scalar | *Visual | NORML | NORML | NORML |
| Odor | scalar | *Visual | NORML | NORML | NORML |
| Emulsified Water | scalar | *Visual | >0.2 | NEG | NEG |
| Free Water | scalar | *Visual | | NEG | NEG |

| FLUID PROPERTIES | method | limit/base | current | history1 | history2 |
|------------------|--------|---------------|---------|----------|----------|
| Visc @ 40°C | cSt | ASTM D445 220 | 219 | 216 | 201 |

| SAMPLE IMAGES | method | limit/base | current | history1 | history2 |
|---------------|--------|------------|---------|----------|----------|
|---------------|--------|------------|---------|----------|----------|



GRAPHS



Laboratory : WearCheck USA - 501 Madison Ave., Cary, NC 27513
Sample No. : WC0901915 **Received** : 16 Jul 2024
Lab Number : 06237799 **Tested** : 17 Jul 2024
Unique Number : 11126633 **Diagnosed** : 18 Jul 2024 - Don Baldrige
Test Package : IND 2 (Additional Tests: KF, PrtCount)

NOVOZYMES
 P.O. BOX 576, 77 PERRY CHAPEL CHURCH ROAD
 FRANKLINTON, NC
 US 27525
 Contact: BRUCE THOMAS
 brct@novozymes.com
 T: (919)494-3146
 F: (919)494-3456

To discuss this sample report, contact Customer Service at 1-800-237-1369.
 * - Denotes test methods that are outside of the ISO 17025 scope of accreditation.
 Statements of conformity to specifications are based on the simple acceptance decision rule (JCGM 106:2012)