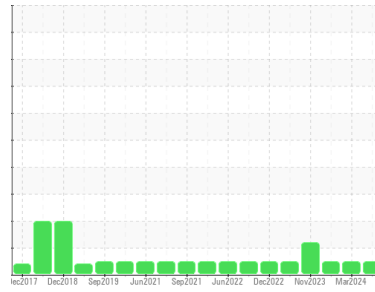




# OIL ANALYSIS REPORT

Sample Rating Trend



**NORMAL**



Area  
**ALBUMIN**  
 Machine Id  
**SPX CHXU235P001**  
 Component  
**Gearbox**  
 Fluid  
**GEAR OIL (PAG) ISO 320 (11 Oz)**

## DIAGNOSIS

### Recommendation

Resample at the next service interval to monitor.

### Wear

All component wear rates are normal.

### Contamination

There is no indication of any contamination in the oil.

### Fluid Condition

The AN level is acceptable for this fluid. The condition of the oil is suitable for further service.

## SAMPLE INFORMATION

	method	limit/base	current	history1	history2
Sample Number	Client Info		<b>WC0947118</b>	WC0848814	WC0865395
Sample Date	Client Info		<b>20 Jun 2024</b>	03 Mar 2024	13 Dec 2023
Machine Age	days	Client Info	<b>0</b>	0	0
Oil Age	days	Client Info	<b>0</b>	90	0
Oil Changed	Client Info		<b>N/A</b>	Changed	N/A
Sample Status			<b>NORMAL</b>	NORMAL	NORMAL

## CONTAMINATION

	method	limit/base	current	history1	history2
Water	WC Method	>0.2	<b>NEG</b>	NEG	NEG

## WEAR METALS

	method	limit/base	current	history1	history2
Iron	ppm	ASTM D5185m >200	<b>17</b>	23	15
Chromium	ppm	ASTM D5185m >15	<b>0</b>	<1	0
Nickel	ppm	ASTM D5185m >15	<b>0</b>	<1	0
Titanium	ppm	ASTM D5185m	<b>0</b>	0	0
Silver	ppm	ASTM D5185m	<b>0</b>	0	0
Aluminum	ppm	ASTM D5185m >25	<b>&lt;1</b>	2	<1
Lead	ppm	ASTM D5185m >100	<b>0</b>	0	0
Copper	ppm	ASTM D5185m >200	<b>0</b>	0	<1
Tin	ppm	ASTM D5185m >25	<b>0</b>	0	<1
Vanadium	ppm	ASTM D5185m	<b>0</b>	0	0
Cadmium	ppm	ASTM D5185m	<b>0</b>	0	0

## ADDITIVES

	method	limit/base	current	history1	history2
Boron	ppm	ASTM D5185m 5	<b>0</b>	0	0
Barium	ppm	ASTM D5185m 5	<b>0</b>	0	0
Molybdenum	ppm	ASTM D5185m 5	<b>0</b>	0	0
Manganese	ppm	ASTM D5185m	<b>&lt;1</b>	<1	0
Magnesium	ppm	ASTM D5185m 5	<b>2</b>	1	0
Calcium	ppm	ASTM D5185m 5	<b>9</b>	29	0
Phosphorus	ppm	ASTM D5185m 775	<b>595</b>	598	502
Zinc	ppm	ASTM D5185m 5	<b>9</b>	24	0
Sulfur	ppm	ASTM D5185m 2000	<b>639</b>	587	356

## CONTAMINANTS

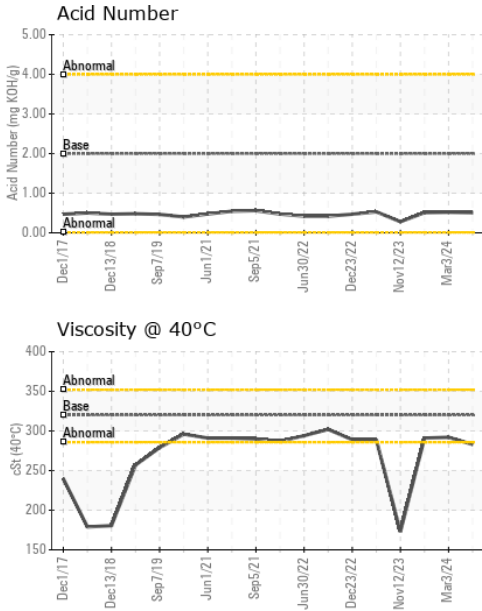
	method	limit/base	current	history1	history2
Silicon	ppm	ASTM D5185m >50	<b>27</b>	20	17
Sodium	ppm	ASTM D5185m	<b>3</b>	8	1
Potassium	ppm	ASTM D5185m >20	<b>&lt;1</b>	2	<1

## FLUID DEGRADATION

	method	limit/base	current	history1	history2
Acid Number (AN)	mg KOH/g	ASTM D8045 2.00	<b>0.51</b>	0.52	0.51



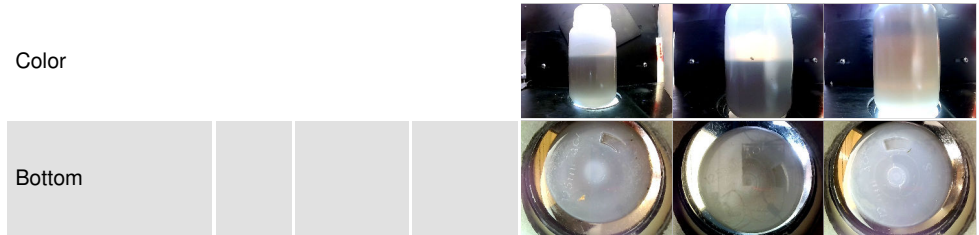
# OIL ANALYSIS REPORT



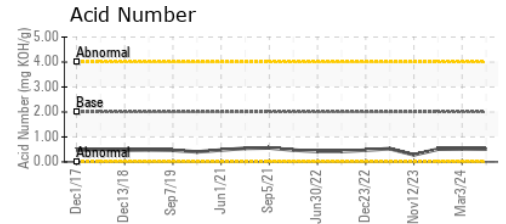
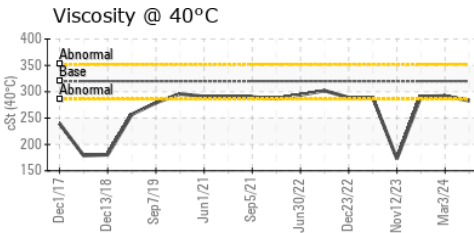
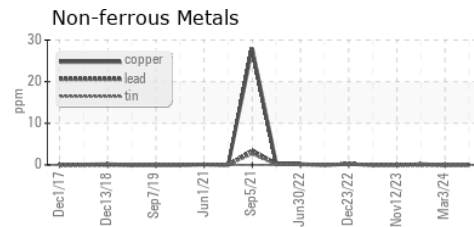
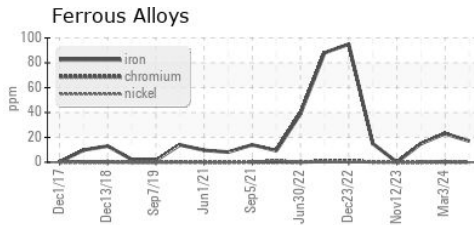
VISUAL	method	limit/base	current	history1	history2
White Metal	scalar	*Visual	NONE	NONE	NONE
Yellow Metal	scalar	*Visual	NONE	NONE	NONE
Precipitate	scalar	*Visual	NONE	NONE	NONE
Silt	scalar	*Visual	NONE	NONE	NONE
Debris	scalar	*Visual	NONE	NONE	NONE
Sand/Dirt	scalar	*Visual	NONE	NONE	NONE
Appearance	scalar	*Visual	NORML	NORML	NORML
Odor	scalar	*Visual	NORML	NORML	NORML
Emulsified Water	scalar	*Visual	>0.2	NEG	NEG
Free Water	scalar	*Visual		NEG	NEG

FLUID PROPERTIES	method	limit/base	current	history1	history2
Visc @ 40°C	cSt	ASTM D445 320	283	292	291

SAMPLE IMAGES	method	limit/base	current	history1	history2
---------------	--------	------------	---------	----------	----------



## GRAPHS



Certificate L2367

**Laboratory** : WearCheck USA - 501 Madison Ave., Cary, NC 27513  
**Sample No.** : WC0947118  
**Lab Number** : 06237929  
**Unique Number** : 11126763  
**Test Package** : IND 2

**Received** : 16 Jul 2024  
**Tested** : 17 Jul 2024  
**Diagnosed** : 18 Jul 2024 - Sean Felton

**TAKEDA**  
 305-505 BAXALTA PARKWAY  
 SOCIAL CIRCLE, GA  
 US 30025  
 Contact: BRANDON INMAN  
 BRANDON.INMAN@SHIRE.COM

To discuss this sample report, contact Customer Service at 1-800-237-1369.

\* - Denotes test methods that are outside of the ISO 17025 scope of accreditation.

Statements of conformity to specifications are based on the simple acceptance decision rule (JCGM 106:2012)