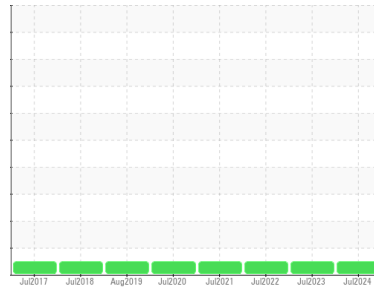




# OIL ANALYSIS REPORT

Sample Rating Trend



**NORMAL**



Area  
**[604094644 SDR]**  
 Machine Id  
**CHOC RECV PMP RED (S/N 20062078)**  
 Component  
**Gearbox**  
 Fluid  
**GEAR OIL ISO 150 (--- GAL)**

## DIAGNOSIS

**Recommendation**  
 Resample at the next service interval to monitor.

**Wear**  
 All component wear rates are normal.

**Contamination**  
 There is no indication of any contamination in the oil.

**Fluid Condition**  
 The AN level is acceptable for this fluid. The condition of the oil is suitable for further service.

## SAMPLE INFORMATION

method	limit/base	current	history1	history2
Sample Number	Client Info	<b>WC0854179</b>	WC0562347	WC0562431
Sample Date	Client Info	<b>07 Jul 2024</b>	15 Jul 2023	17 Jul 2022
Machine Age	hrs Client Info	<b>0</b>	0	0
Oil Age	hrs Client Info	<b>0</b>	0	0
Oil Changed	Client Info	<b>Changed</b>	Changed	Changed
Sample Status		<b>NORMAL</b>	NORMAL	NORMAL

## CONTAMINATION

method	limit/base	current	history1	history2
Water	WC Method >0.2	<b>NEG</b>	NEG	NEG

## WEAR METALS

method	limit/base	current	history1	history2
Iron	ppm ASTM D5185m >200	<b>42</b>	8	10
Chromium	ppm ASTM D5185m >15	<b>0</b>	0	0
Nickel	ppm ASTM D5185m >15	<b>0</b>	0	0
Titanium	ppm ASTM D5185m	<b>0</b>	0	0
Silver	ppm ASTM D5185m	<b>0</b>	0	0
Aluminum	ppm ASTM D5185m >25	<b>0</b>	<1	0
Lead	ppm ASTM D5185m >100	<b>0</b>	0	0
Copper	ppm ASTM D5185m >200	<b>0</b>	0	0
Tin	ppm ASTM D5185m >25	<b>0</b>	0	0
Antimony	ppm ASTM D5185m >5	<b>---</b>	---	---
Vanadium	ppm ASTM D5185m	<b>0</b>	0	0
Cadmium	ppm ASTM D5185m	<b>0</b>	0	0

## ADDITIVES

method	limit/base	current	history1	history2
Boron	ppm ASTM D5185m 50	<b>0</b>	0	0
Barium	ppm ASTM D5185m 15	<b>3</b>	0	0
Molybdenum	ppm ASTM D5185m 15	<b>0</b>	0	0
Manganese	ppm ASTM D5185m	<b>&lt;1</b>	0	<1
Magnesium	ppm ASTM D5185m 50	<b>&lt;1</b>	<1	<1
Calcium	ppm ASTM D5185m 50	<b>4</b>	0	<1
Phosphorus	ppm ASTM D5185m 350	<b>429</b>	932	325
Zinc	ppm ASTM D5185m 100	<b>4</b>	0	6
Sulfur	ppm ASTM D5185m 12500	<b>1544</b>	20	1434

## CONTAMINANTS

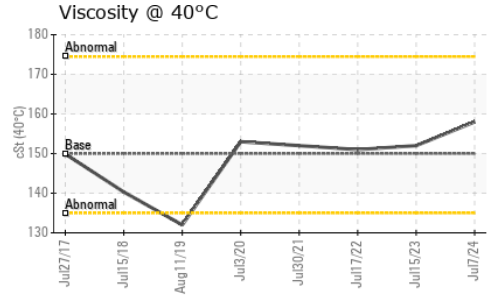
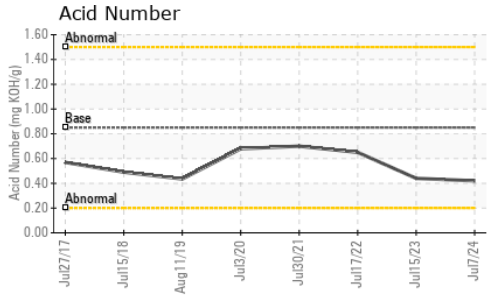
method	limit/base	current	history1	history2
Silicon	ppm ASTM D5185m >50	<b>7</b>	13	<1
Sodium	ppm ASTM D5185m	<b>1</b>	0	0
Potassium	ppm ASTM D5185m >20	<b>0</b>	<1	0

## FLUID DEGRADATION

method	limit/base	current	history1	history2
Acid Number (AN)	mg KOH/g ASTM D8045 0.85	<b>0.42</b>	0.44	0.65



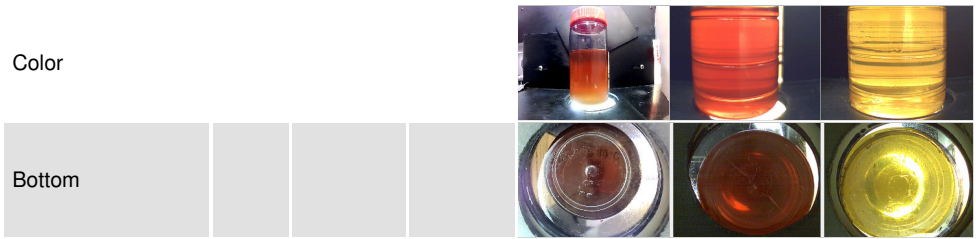
# OIL ANALYSIS REPORT



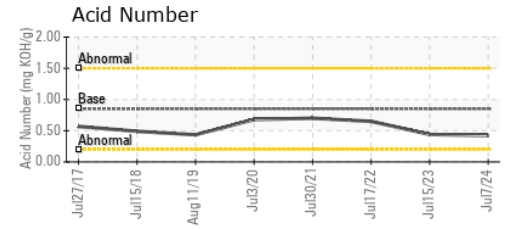
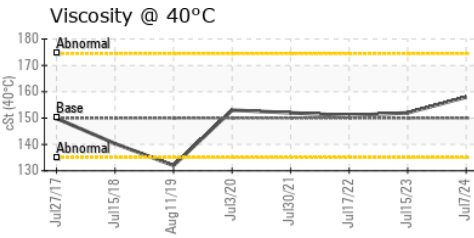
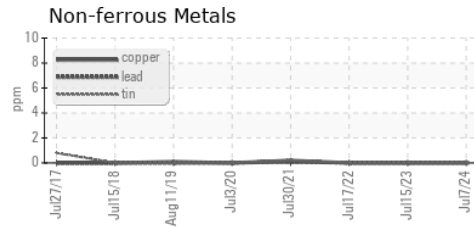
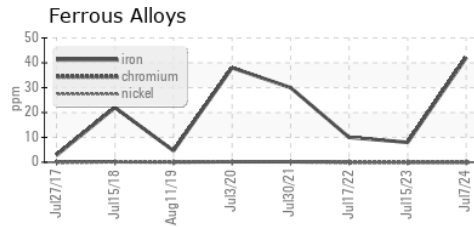
VISUAL	method	limit/base	current	history1	history2
White Metal	scalar	*Visual	NONE	NONE	NONE
Yellow Metal	scalar	*Visual	NONE	NONE	NONE
Precipitate	scalar	*Visual	NONE	NONE	NONE
Silt	scalar	*Visual	NONE	NONE	NONE
Debris	scalar	*Visual	NONE	NONE	NONE
Sand/Dirt	scalar	*Visual	NONE	NONE	NONE
Appearance	scalar	*Visual	NORML	NORML	NORML
Odor	scalar	*Visual	NORML	NORML	NORML
Emulsified Water	scalar	*Visual	>0.2	NEG	NEG
Free Water	scalar	*Visual		NEG	NEG

FLUID PROPERTIES	method	limit/base	current	history1	history2	
Visc @ 40°C	cSt	ASTM D445	150	<b>158</b>	152	151

SAMPLE IMAGES	method	limit/base	current	history1	history2
---------------	--------	------------	---------	----------	----------



## GRAPHS



**Laboratory** : WearCheck USA - 501 Madison Ave., Cary, NC 27513  
**Sample No.** : WC0854179      **Received** : 16 Jul 2024  
**Lab Number** : **06237941**      **Tested** : 17 Jul 2024  
**Unique Number** : 11126775      **Diagnosed** : 18 Jul 2024 - Sean Felton  
**Test Package** : IND 2

**MARS CHOCOLATE**  
 2019 NORTH OAK PARK  
 CHICAGO, IL  
 US 60707  
 Contact: TONY FIORE  
 tony.fiore@effem.com  
 T: (773)745-2279  
 F:

To discuss this sample report, contact Customer Service at 1-800-237-1369.  
 \* - Denotes test methods that are outside of the ISO 17025 scope of accreditation.  
 Statements of conformity to specifications are based on the simple acceptance decision rule (JCGM 106:2012)