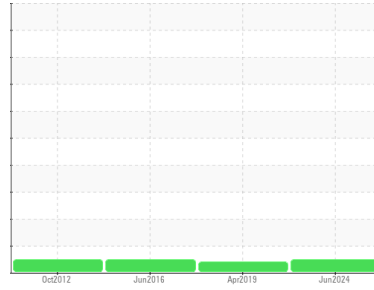




# OIL ANALYSIS REPORT

## Sample Rating Trend



**NORMAL**



Area  
**[604440434 SDR]**  
 Machine Id  
**SYS 2 SUGAR WEST (S/N 20067040)**  
 Component  
**Gearbox**  
 Fluid  
**ISO 68 (--- GAL)**

### DIAGNOSIS

**Recommendation**  
 Resample at the next service interval to monitor.

**Wear**  
 All component wear rates are normal.

**Contamination**  
 There is no indication of any contamination in the component.

**Fluid Condition**  
 The AN level is acceptable for this fluid. The condition of the oil is suitable for further service.

### SAMPLE INFORMATION

method	limit/base	current	history1	history2
Sample Number	Client Info	<b>WC0854441</b>	WC0321811	WCI2292009
Sample Date	Client Info	<b>14 Jun 2024</b>	20 Apr 2019	26 Jun 2016
Machine Age	mls	Client Info	<b>0</b>	0
Oil Age	mls	Client Info	<b>0</b>	0
Oil Changed	Client Info	<b>Changed</b>	Changed	Changed
Sample Status		<b>NORMAL</b>	ATTENTION	NORMAL

### CONTAMINATION

method	limit/base	current	history1	history2
Water	WC Method >0.2	<b>NEG</b>	NEG	NEG

### WEAR METALS

method	limit/base	current	history1	history2	
Iron	ppm	ASTM D5185m >200	<b>0</b>	0	<1
Chromium	ppm	ASTM D5185m >15	<b>0</b>	0	0
Nickel	ppm	ASTM D5185m >15	<b>0</b>	<1	<1
Titanium	ppm	ASTM D5185m	<b>0</b>	0	0
Silver	ppm	ASTM D5185m	<b>0</b>	<1	0
Aluminum	ppm	ASTM D5185m >25	<b>0</b>	0	0
Lead	ppm	ASTM D5185m >100	<b>0</b>	<1	0
Copper	ppm	ASTM D5185m >200	<b>0</b>	0	0
Tin	ppm	ASTM D5185m >25	<b>0</b>	0	0
Antimony	ppm	ASTM D5185m >5	<b>---</b>	0	0
Vanadium	ppm	ASTM D5185m	<b>0</b>	0	0
Cadmium	ppm	ASTM D5185m	<b>0</b>	<1	0

### ADDITIVES

method	limit/base	current	history1	history2	
Boron	ppm	ASTM D5185m	<b>0</b>	0	<1
Barium	ppm	ASTM D5185m	<b>0</b>	0	0
Molybdenum	ppm	ASTM D5185m	<b>0</b>	0	<1
Manganese	ppm	ASTM D5185m	<b>0</b>	0	0
Magnesium	ppm	ASTM D5185m	<b>&lt;1</b>	0	0
Calcium	ppm	ASTM D5185m	<b>0</b>	<1	2
Phosphorus	ppm	ASTM D5185m	<b>215</b>	228	198
Zinc	ppm	ASTM D5185m	<b>0</b>	2	10
Sulfur	ppm	ASTM D5185m	<b>2193</b>	2104	3350

### CONTAMINANTS

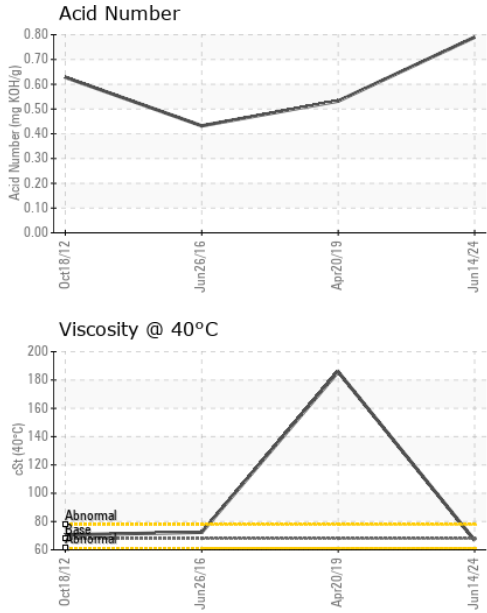
method	limit/base	current	history1	history2	
Silicon	ppm	ASTM D5185m >50	<b>2</b>	1	<1
Sodium	ppm	ASTM D5185m	<b>1</b>	<1	0
Potassium	ppm	ASTM D5185m >20	<b>0</b>	0	5

### FLUID DEGRADATION

method	limit/base	current	history1	history2	
Acid Number (AN)	mg KOH/g	ASTM D8045	<b>0.79</b>	0.532	0.432



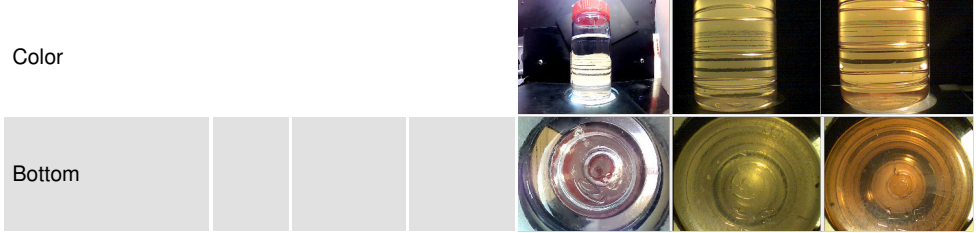
# OIL ANALYSIS REPORT



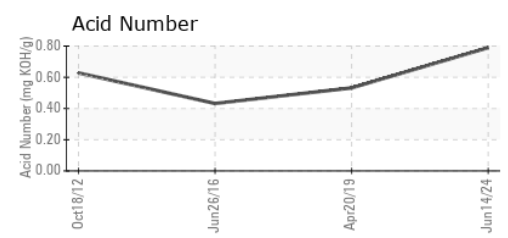
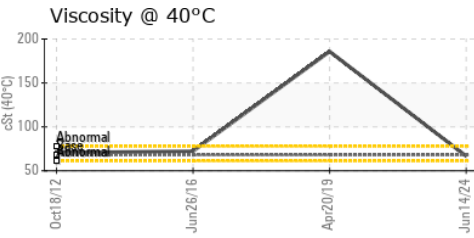
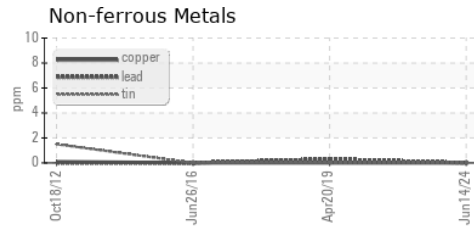
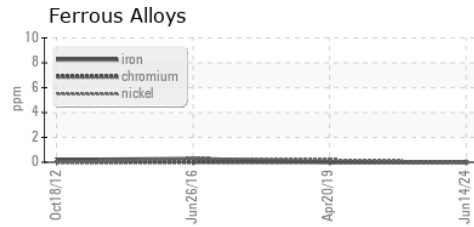
VISUAL	method	limit/base	current	history1	history2
White Metal	scalar	*Visual	NONE	NONE	NONE
Yellow Metal	scalar	*Visual	NONE	NONE	NONE
Precipitate	scalar	*Visual	NONE	NONE	NONE
Silt	scalar	*Visual	NONE	NONE	NONE
Debris	scalar	*Visual	NONE	NONE	LIGHT
Sand/Dirt	scalar	*Visual	NONE	NONE	NONE
Appearance	scalar	*Visual	NORML	NORML	NORML
Odor	scalar	*Visual	NORML	NORML	NORML
Emulsified Water	scalar	*Visual	>0.2	NEG	NEG
Free Water	scalar	*Visual		NEG	NEG

FLUID PROPERTIES	method	limit/base	current	history1	history2	
Visc @ 40°C	cSt	ASTM D445	68.0	66.7	185.8	72.39

SAMPLE IMAGES	method	limit/base	current	history1	history2
---------------	--------	------------	---------	----------	----------



## GRAPHS



**Laboratory** : WearCheck USA - 501 Madison Ave., Cary, NC 27513  
**Sample No.** : WC0854441      **Received** : 16 Jul 2024  
**Lab Number** : 06237948      **Tested** : 17 Jul 2024  
**Unique Number** : 11126782      **Diagnosed** : 18 Jul 2024 - Sean Felton  
**Test Package** : IND 2

**MARS CHOCOLATE**  
 2019 NORTH OAK PARK  
 CHICAGO, IL  
 US 60707  
 Contact: TONY FIORE  
 tony.fiore@effem.com  
 T: (773)745-2279  
 F:

To discuss this sample report, contact Customer Service at 1-800-237-1369.  
 \* - Denotes test methods that are outside of the ISO 17025 scope of accreditation.  
 Statements of conformity to specifications are based on the simple acceptance decision rule (JCGM 106:2012)