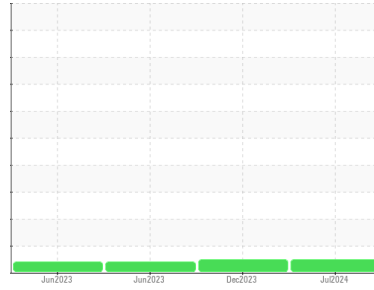




# OIL ANALYSIS REPORT

## Sample Rating Trend



**NORMAL**



Area  
**[604365059 SDR]**  
 Machine Id  
**BRINE DIS PUMP 1 (S/N 20075332)**  
 Component  
**Pump**  
 Fluid  
**MOBIL DTE OIL HVY MEDIUM (--- GAL)**

### DIAGNOSIS

#### Recommendation

Resample at the next service interval to monitor.

#### Wear

All component wear rates are normal.

#### Contamination

There is no indication of any contamination in the oil.

#### Fluid Condition

The AN level is acceptable for this fluid. The condition of the oil is suitable for further service.

SAMPLE INFORMATION		method	limit/base	current	history1	history2
Sample Number	Client Info			<b>WC0854404</b>	WC0854254	WC0605515
Sample Date	Client Info			<b>15 Jul 2024</b>	28 Dec 2023	22 Jun 2023
Machine Age	mls	Client Info		<b>0</b>	0	0
Oil Age	mls	Client Info		<b>0</b>	0	0
Oil Changed	Client Info			<b>Changed</b>	Changed	Changed
Sample Status				<b>NORMAL</b>	NORMAL	ATTENTION

CONTAMINATION		method	limit/base	current	history1	history2
Water	WC Method		>.1	<b>NEG</b>	NEG	NEG

WEAR METALS		method	limit/base	current	history1	history2
Iron	ppm	ASTM D5185m	>90	<b>0</b>	0	<1
Chromium	ppm	ASTM D5185m	>5	<b>0</b>	0	0
Nickel	ppm	ASTM D5185m	>5	<b>0</b>	0	0
Titanium	ppm	ASTM D5185m	>3	<b>&lt;1</b>	0	<1
Silver	ppm	ASTM D5185m	>3	<b>0</b>	0	0
Aluminum	ppm	ASTM D5185m	>7	<b>0</b>	0	1
Lead	ppm	ASTM D5185m	>12	<b>0</b>	<1	0
Copper	ppm	ASTM D5185m	>30	<b>0</b>	0	<1
Tin	ppm	ASTM D5185m	>9	<b>0</b>	<1	0
Vanadium	ppm	ASTM D5185m		<b>0</b>	0	0
Cadmium	ppm	ASTM D5185m		<b>0</b>	0	0

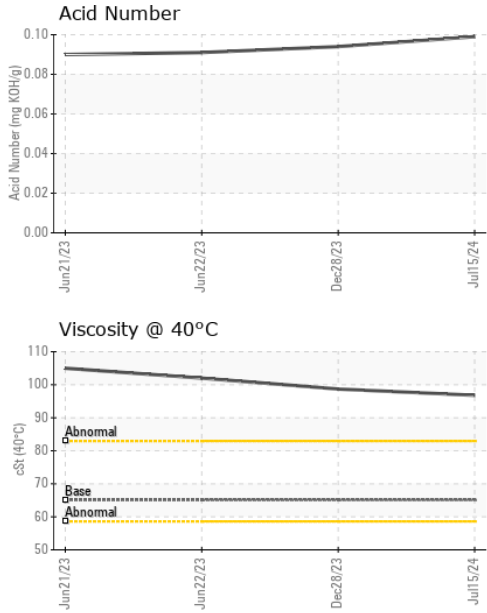
ADDITIVES		method	limit/base	current	history1	history2
Boron	ppm	ASTM D5185m		<b>0</b>	0	0
Barium	ppm	ASTM D5185m		<b>0</b>	0	0
Molybdenum	ppm	ASTM D5185m		<b>0</b>	0	0
Manganese	ppm	ASTM D5185m		<b>0</b>	0	0
Magnesium	ppm	ASTM D5185m		<b>&lt;1</b>	0	0
Calcium	ppm	ASTM D5185m		<b>0</b>	0	0
Phosphorus	ppm	ASTM D5185m		<b>12</b>	11	13
Zinc	ppm	ASTM D5185m		<b>0</b>	0	2
Sulfur	ppm	ASTM D5185m		<b>716</b>	534	783

CONTAMINANTS		method	limit/base	current	history1	history2
Silicon	ppm	ASTM D5185m	>60	<b>&lt;1</b>	0	<1
Sodium	ppm	ASTM D5185m		<b>1</b>	0	0
Potassium	ppm	ASTM D5185m	>20	<b>0</b>	<1	<1

FLUID DEGRADATION		method	limit/base	current	history1	history2
Acid Number (AN)	mg KOH/g	ASTM D8045		<b>0.099</b>	0.094	0.091



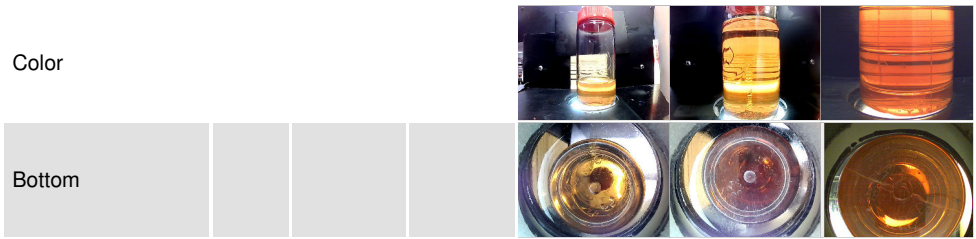
# OIL ANALYSIS REPORT



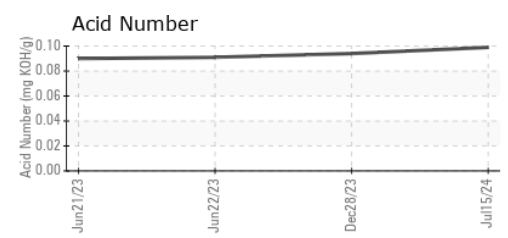
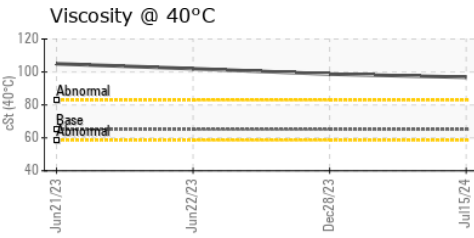
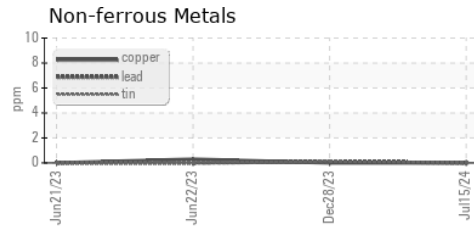
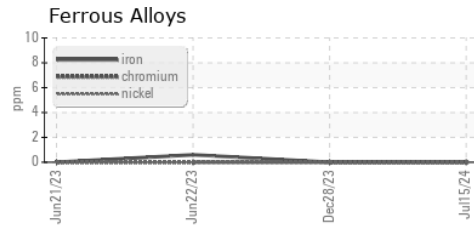
VISUAL	method	limit/base	current	history1	history2
White Metal	scalar	*Visual	NONE	NONE	NONE
Yellow Metal	scalar	*Visual	NONE	NONE	NONE
Precipitate	scalar	*Visual	NONE	NONE	NONE
Silt	scalar	*Visual	NONE	NONE	NONE
Debris	scalar	*Visual	NONE	NONE	NONE
Sand/Dirt	scalar	*Visual	NONE	NONE	NONE
Appearance	scalar	*Visual	NORML	NORML	NORML
Odor	scalar	*Visual	NORML	NORML	NORML
Emulsified Water	scalar	*Visual	>.1	NEG	NEG
Free Water	scalar	*Visual		NEG	NEG

FLUID PROPERTIES	method	limit/base	current	history1	history2
Visc @ 40°C	cSt	ASTM D445	65.1	96.8	98.7

SAMPLE IMAGES	method	limit/base	current	history1	history2
---------------	--------	------------	---------	----------	----------



## GRAPHS



**Laboratory** : WearCheck USA - 501 Madison Ave., Cary, NC 27513  
**Sample No.** : WC0854404      **Received** : 16 Jul 2024  
**Lab Number** : 06237952      **Tested** : 17 Jul 2024  
**Unique Number** : 11126786      **Diagnosed** : 19 Jul 2024 - Jonathan Hester  
**Test Package** : IND 2

**MARS CHOCOLATE**  
 2019 NORTH OAK PARK  
 CHICAGO, IL  
 US 60707  
 Contact: TONY FIORE  
 tony.fiore@effem.com  
 T: (773)745-2279  
 F:

To discuss this sample report, contact Customer Service at 1-800-237-1369.  
 \* - Denotes test methods that are outside of the ISO 17025 scope of accreditation.  
 Statements of conformity to specifications are based on the simple acceptance decision rule (JCGM 106:2012)