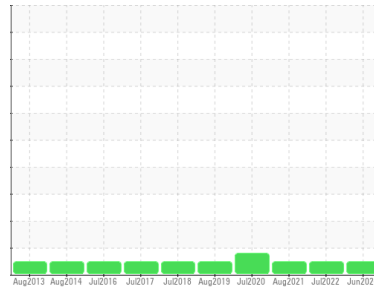




OIL ANALYSIS REPORT

Sample Rating Trend



NORMAL



Area

[604084897 SDR]

Machine Id

CRMB STDZ ADJ (S/N 20069311)

Component

Gearbox

Fluid

GEAR OIL ISO 150 (--- GAL)

DIAGNOSIS

Recommendation

Resample at the next service interval to monitor.

Wear

All component wear rates are normal.

Contamination

There is no indication of any contamination in the component.

Fluid Condition

The AN level is acceptable for this fluid. The condition of the oil is suitable for further service.

SAMPLE INFORMATION

method	limit/base	current	history1	history2
Sample Number	Client Info	WC0854392	WC0562427	WC0562175
Sample Date	Client Info	30 Jun 2024	17 Jul 2022	11 Aug 2021
Machine Age	hrs Client Info	0	0	0
Oil Age	hrs Client Info	0	0	0
Oil Changed	Client Info	Changed	Changed	Changed
Sample Status		NORMAL	NORMAL	NORMAL

CONTAMINATION

method	limit/base	current	history1	history2
Water	WC Method >0.2	NEG	NEG	NEG

WEAR METALS

method	limit/base	current	history1	history2
Iron	ppm ASTM D5185m >200	13	13	<1
Chromium	ppm ASTM D5185m >15	0	0	0
Nickel	ppm ASTM D5185m >15	0	0	<1
Titanium	ppm ASTM D5185m	0	0	<1
Silver	ppm ASTM D5185m	0	0	0
Aluminum	ppm ASTM D5185m >25	0	0	0
Lead	ppm ASTM D5185m >100	0	0	<1
Copper	ppm ASTM D5185m >200	0	2	0
Tin	ppm ASTM D5185m >25	0	0	<1
Antimony	ppm ASTM D5185m >5	---	---	0
Vanadium	ppm ASTM D5185m	0	0	0
Cadmium	ppm ASTM D5185m	0	0	0

ADDITIVES

method	limit/base	current	history1	history2
Boron	ppm ASTM D5185m 50	0	0	3
Barium	ppm ASTM D5185m 15	0	0	0
Molybdenum	ppm ASTM D5185m 15	0	0	<1
Manganese	ppm ASTM D5185m	<1	0	0
Magnesium	ppm ASTM D5185m 50	<1	0	0
Calcium	ppm ASTM D5185m 50	0	<1	0
Phosphorus	ppm ASTM D5185m 350	257	479	197
Zinc	ppm ASTM D5185m 100	0	7	0
Sulfur	ppm ASTM D5185m 12500	1940	568	1752

CONTAMINANTS

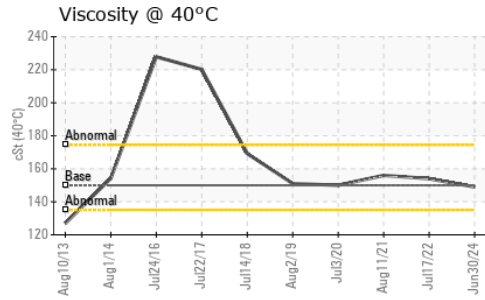
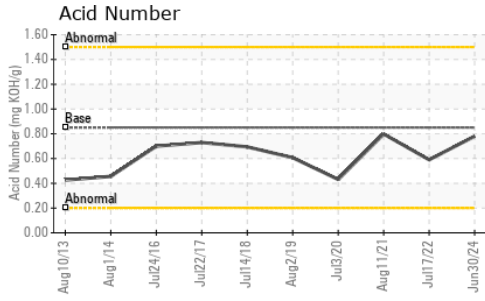
method	limit/base	current	history1	history2
Silicon	ppm ASTM D5185m >50	2	<1	4
Sodium	ppm ASTM D5185m	<1	0	0
Potassium	ppm ASTM D5185m >20	0	0	2

FLUID DEGRADATION

method	limit/base	current	history1	history2
Acid Number (AN)	mg KOH/g ASTM D8045 0.85	0.78	0.59	0.798



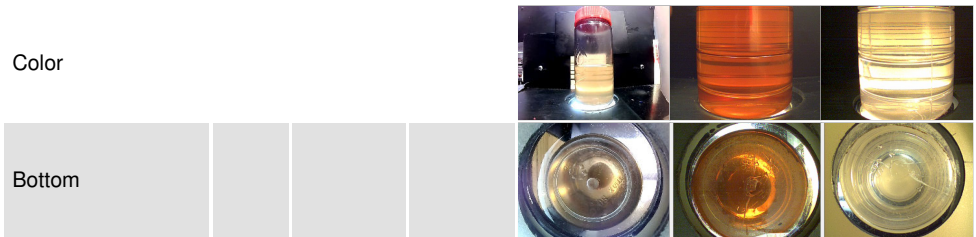
OIL ANALYSIS REPORT



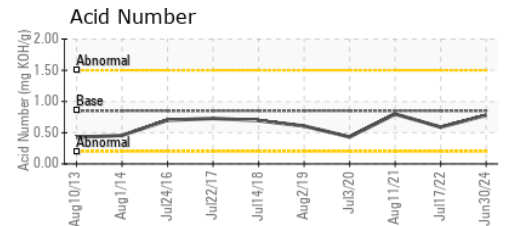
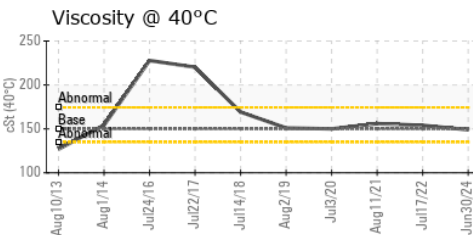
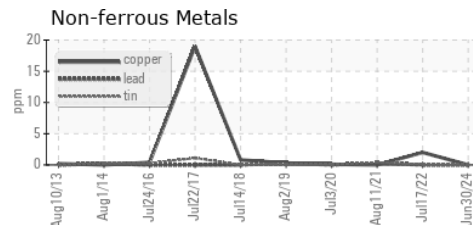
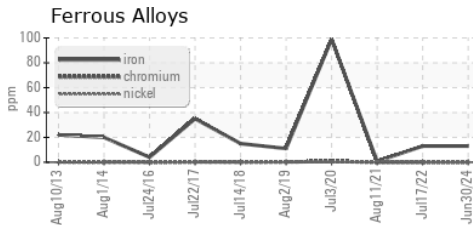
VISUAL	method	limit/base	current	history1	history2
White Metal	scalar	*Visual	NONE	NONE	NONE
Yellow Metal	scalar	*Visual	NONE	NONE	NONE
Precipitate	scalar	*Visual	NONE	NONE	NONE
Silt	scalar	*Visual	NONE	NONE	NONE
Debris	scalar	*Visual	NONE	NONE	NONE
Sand/Dirt	scalar	*Visual	NONE	NONE	NONE
Appearance	scalar	*Visual	NORML	NORML	NORML
Odor	scalar	*Visual	NORML	NORML	NORML
Emulsified Water	scalar	*Visual	>0.2	NEG	NEG
Free Water	scalar	*Visual		NEG	NEG

FLUID PROPERTIES	method	limit/base	current	history1	history2	
Visc @ 40°C	cSt	ASTM D445	150	149	154	156

SAMPLE IMAGES	method	limit/base	current	history1	history2
---------------	--------	------------	---------	----------	----------



GRAPHS



Certificate L2367

Laboratory : WearCheck USA - 501 Madison Ave., Cary, NC 27513

Sample No. : WC0854392

Lab Number : 06237957

Unique Number : 11126791

Test Package : IND 2

Received : 16 Jul 2024

Tested : 17 Jul 2024

Diagnosed : 18 Jul 2024 - Sean Felton

MARS CHOCOLATE

2019 NORTH OAK PARK

CHICAGO, IL

US 60707

Contact: TONY FIORE

tony.fiore@effem.com

T: (773)745-2279

F:

To discuss this sample report, contact Customer Service at 1-800-237-1369.

* - Denotes test methods that are outside of the ISO 17025 scope of accreditation.

Statements of conformity to specifications are based on the simple acceptance decision rule (JCGM 106:2012)